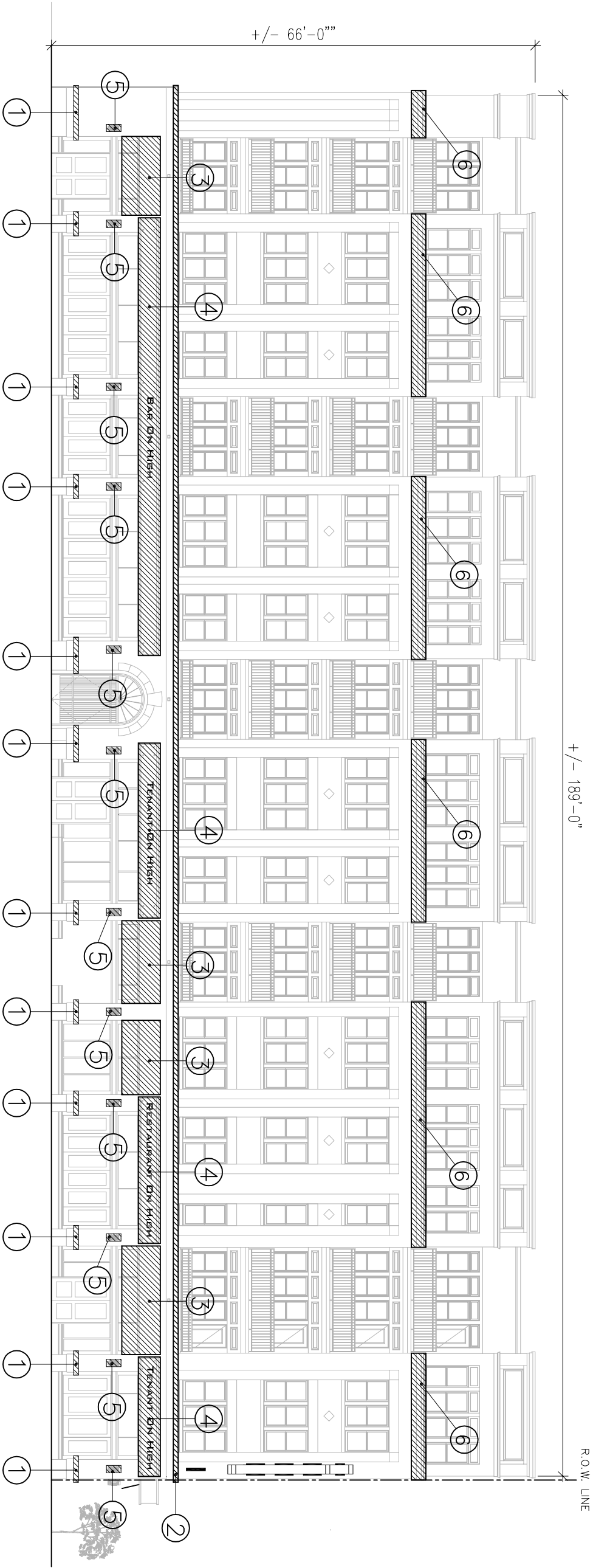


RIGHT OF WAY ENCROACHMENT LEGEND

820 – 840 NORTH HIGH STREET; 10 – 20 EAST HUBBARD AVENUE

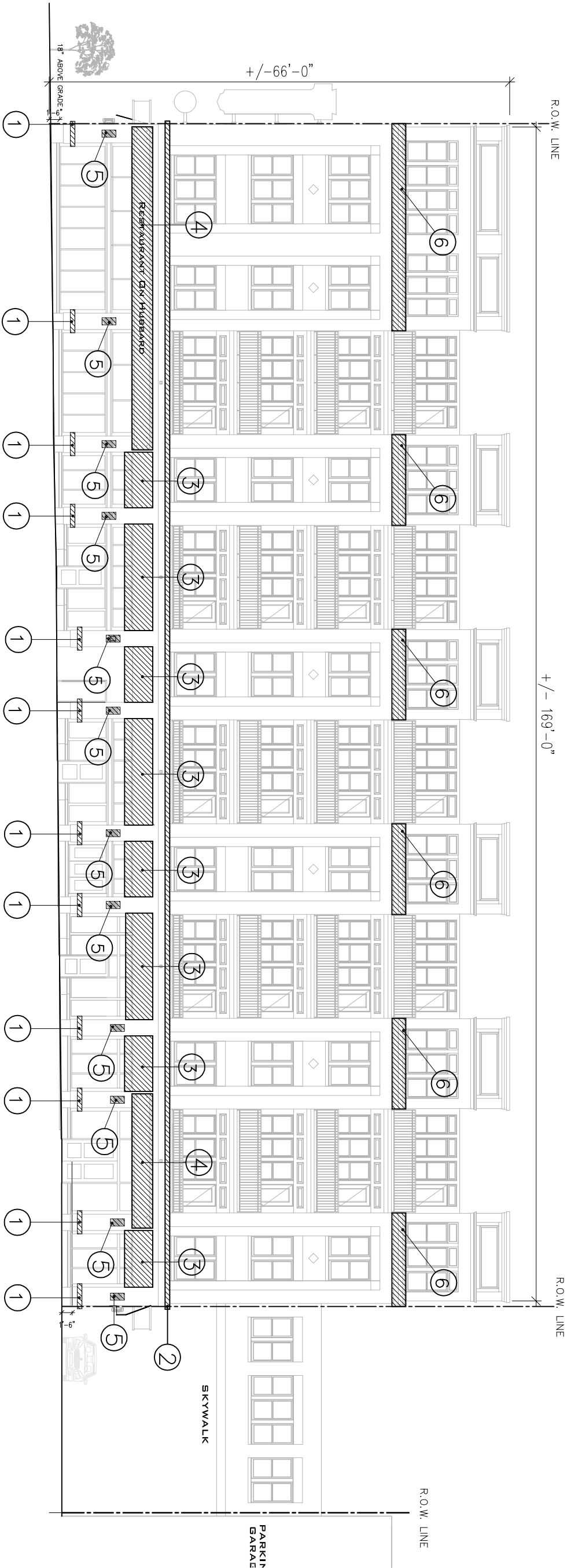
ID	DESCRIPTION OF ENCROACHMENT	STREET	MAX. ENCROACHMENT INTO RIGHT-OF-WAY	APPROXIMATE HEIGHT ABOVE SIDEWALK (PVMT) RANGE	TOTAL NO. OF ENCROACHMENTS
①	STONE BAND AT STREET LEVEL	N. HIGH STREET/HUBBARD AVE./ PEARL STREET	5"	2'-0" – 3'-8"	27 SECTIONS
②	STONE BAND AT SECOND FLOOR	N. HIGH STREET/HUBBARD AVE./ PEARL STREET	5"	14'-6" – 17'-6"	CONTINUOUS ALONG ALL STREETS
③	CANVAS AWNING (BY 904 PERMIT)	N. HIGH STREET/HUBBARD AVE./ PEARL STREET	2'-6"	9'-0 – 15'-0"	13
④	PERMANENT SIGN CANOPY	N. HIGH STREET/HUBBARD AVE./ PEARL STREET	3'-6"	10'-0" – 15'-0"	7
⑤	WALL MOUNTED LIGHT	N. HIGH STREET/HUBBARD AVE./ PEARL STREET	12"	7'-0" – 9'-6"	30
⑥	BRICK CORNICE BAND AT 5TH FLOOR	N. HIGH STREET/HUBBARD AVE./ PEARL STREET	3"	47'-6" – 51'-6"	13 SECTIONS



RIGHT OF WAY ENCROACHMENT LEGEND

820 – 840 NORTH HIGH STREET; 10 – 20 EAST HUBBARD AVENUE

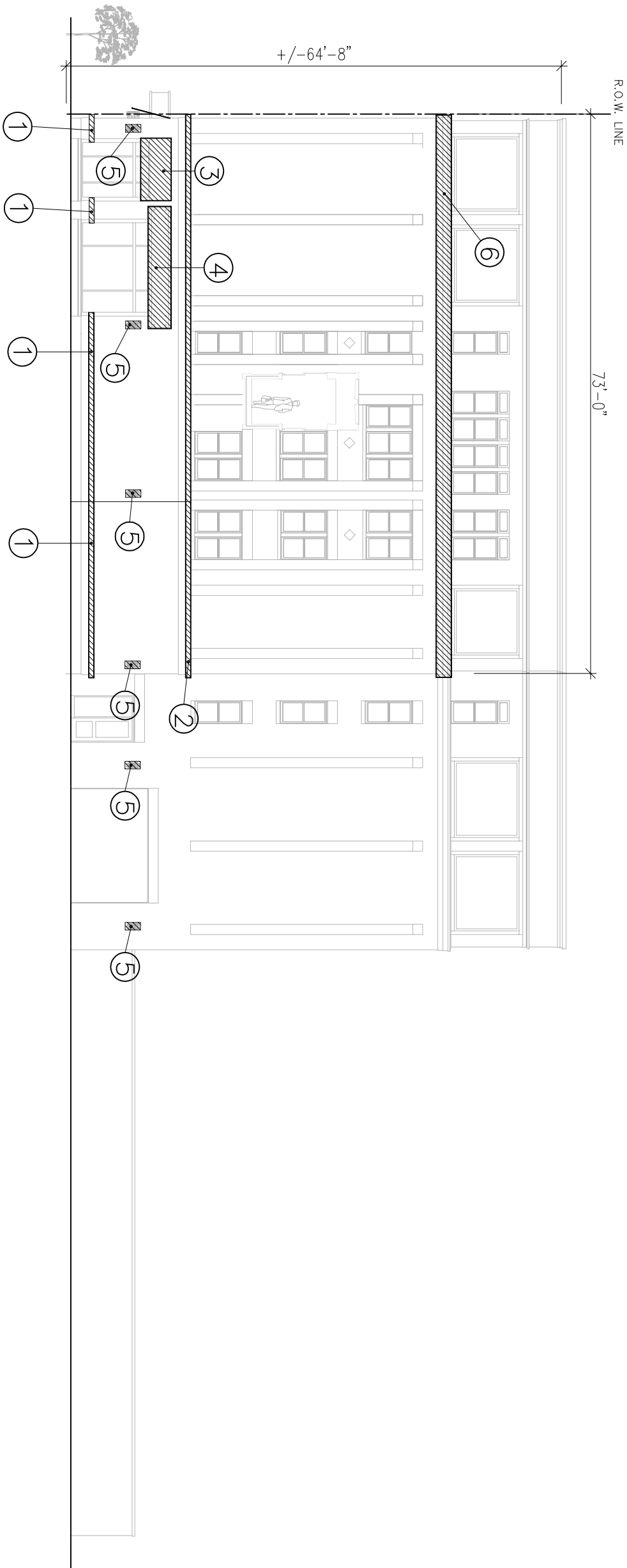
ID	DESCRIPTION OF ENCROACHMENT	STREET	MAX. ENCROACHMENT INTO RIGHT-OF-WAY	APPROXIMATE HEIGHT ABOVE SIDEWALK (PVMT) RANGE	TOTAL NO. OF ENCROACHMENTS
①	STONE BAND AT STREET LEVEL	N. HIGH STREET/HUBBARD AVE./ PEARL STREET	5"	2'-0" – 3'-8"	27 SECTIONS
②	STONE BAND AT SECOND FLOOR	N. HIGH STREET/HUBBARD AVE./ PEARL STREET	5"	14'-6" – 17'-6"	CONTINUOUS ALONG ALL STREETS
③	CANVAS AWNING (BY 904 PERMIT)	N. HIGH STREET/HUBBARD AVE./ PEARL STREET	2'-6"	9'-0 – 15'-0"	13
④	PERMANENT SIGN CANOPY	N. HIGH STREET/HUBBARD AVE./ PEARL STREET	3'-6"	10'-0" – 15'-0"	7
⑤	WALL MOUNTED LIGHT	N. HIGH STREET/HUBBARD AVE./ PEARL STREET	12"	7'-0" – 9'-6"	30
⑥	BRICK CORNICE BAND AT 5TH FLOOR	N. HIGH STREET/HUBBARD AVE./ PEARL STREET	3"	47'-6" – 51'-6"	13 SECTIONS



RIGHT OF WAY ENCROACHMENT LEGEND

820 – 840 NORTH HIGH STREET; 10 – 20 EAST HUBBARD AVENUE

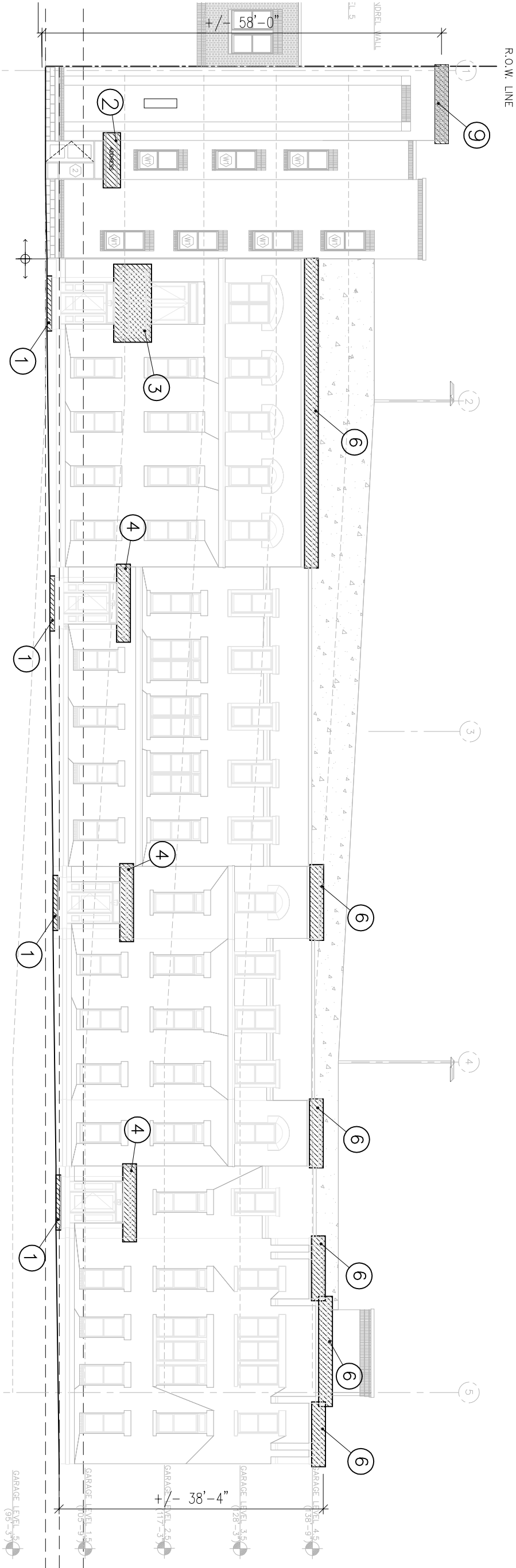
ID	DESCRIPTION OF ENCROACHMENT	STREET	MAX. ENCROACHMENT INTO RIGHT-OF-WAY	APPROXIMATE HEIGHT ABOVE SIDEWALK (PVMT) RANGE	TOTAL NO. OF ENCROACHMENTS
①	STONE BAND AT STREET LEVEL	N. HIGH STREET/HUBBARD AVE./ PEARL STREET	5"	2'-0" – 3'-8"	27 SECTIONS
②	STONE BAND AT SECOND FLOOR	N. HIGH STREET/HUBBARD AVE./ PEARL STREET	5"	14'-6" – 17'-6"	CONTINUOUS ALONG ALL STREETS
③	CANVAS AWNING (BY 904 PERMIT)	N. HIGH STREET/HUBBARD AVE./ PEARL STREET	2'-6"	9'-0 – 15'-0"	13
④	PERMANENT SIGN CANOPY	N. HIGH STREET/HUBBARD AVE./ PEARL STREET	3'-6"	10'-0" – 15'-0"	7
⑤	WALL MOUNTED LIGHT	N. HIGH STREET/HUBBARD AVE./ PEARL STREET	12"	7'-0" – 9'-6"	30
⑥	BRICK CORNICE BAND AT 5TH FLOOR	N. HIGH STREET/HUBBARD AVE./ PEARL STREET	3"	47'-6" – 51'-6"	13 SECTIONS



RIGHT OF WAY ENCROACHMENT LEGEND

30, 32, 38, 44, 50 EAST HUBBARD AVENUE


ID	DESCRIPTION OF ENCROACHMENT	STREET	MAX. ENCROACHMENT INTO RIGHT-OF-WAY	APPROXIMATE HEIGHT ABOVE SIDEWALK (PVMT)	TOTAL NO. OF ENCROACHMENTS
①	STEP TO BROWNSTONE ENTRY	HUBBARD AVENUE	12"	7" – 9"	4
②	PARKING GARAGE ENTRY CANOPY	HUBBARD AVE. / PEARL ST.	3'-0"	8'-6" – 11'-0"	2
③	BROWNSTONE UNIT 32 ENTRY CANOPY	HUBBARD AVENUE	2'-6"	9'-6" – 15'-0"	1
④	BROWNSTONE UNIT 38, 44, 50 ENTRY CANOPY	HUBBARD AVENUE	2'-6"	9'-6" – 12'-0"	3
⑤	WALL MOUNTED LIGHT ON GARAGE	PEARL STREET	12"	13'-0" – 15'-0"	3
⑥	ROOF CORNICE AT BROWNSTONES	HUBBARD AVENUE	4"	36'-0" – 40'-0"	6 SECTIONS
⑦	ROOF CORNICE AT NW CORNER OF GARAGE	PEARL ST. / SHORT ALLEY	3"	38'-0" – 40'-0"	1 EA. STREET
⑧	ROOF CORNICE AT NE CORNER OF GARAGE	SHORT ALLEY	3"	39'-0" – 41'-0"	1
⑨	ROOF CORNICE AT SW CORNER OF GARAGE	HUBBARD AVE. / PEARL ST.	4"	56'-6" – 59'-0"	1 EA. STREET



SOUTH ELEVATION: HUBBARD AVE. (GARAGE/BROWNSTONES)

SCALE NTS

PROJECT NUMBER: A12-036



ARCHITECTURAL ALLIANCE
1 6 5 F I F T H O R T H S T R E E T
C O L U M B U S O H 4 3 2 1 5
6 1 4 . 4 F A X 6 9 1 7 4 5 4 0 6 0 9 . 0 5 0 0
E - M A I L : mail@archall.com

RIGHT OF WAY ENCROACHMENT DRAWINGS

THE HUBBARD

NORTH HIGH STREET & HUBBARD AVE.
COLUMBUS, OH 43215

DATE : SEPTEMBER 16, 2013

SCALE : NTS

PRINT AT LETTER SIZE ☐

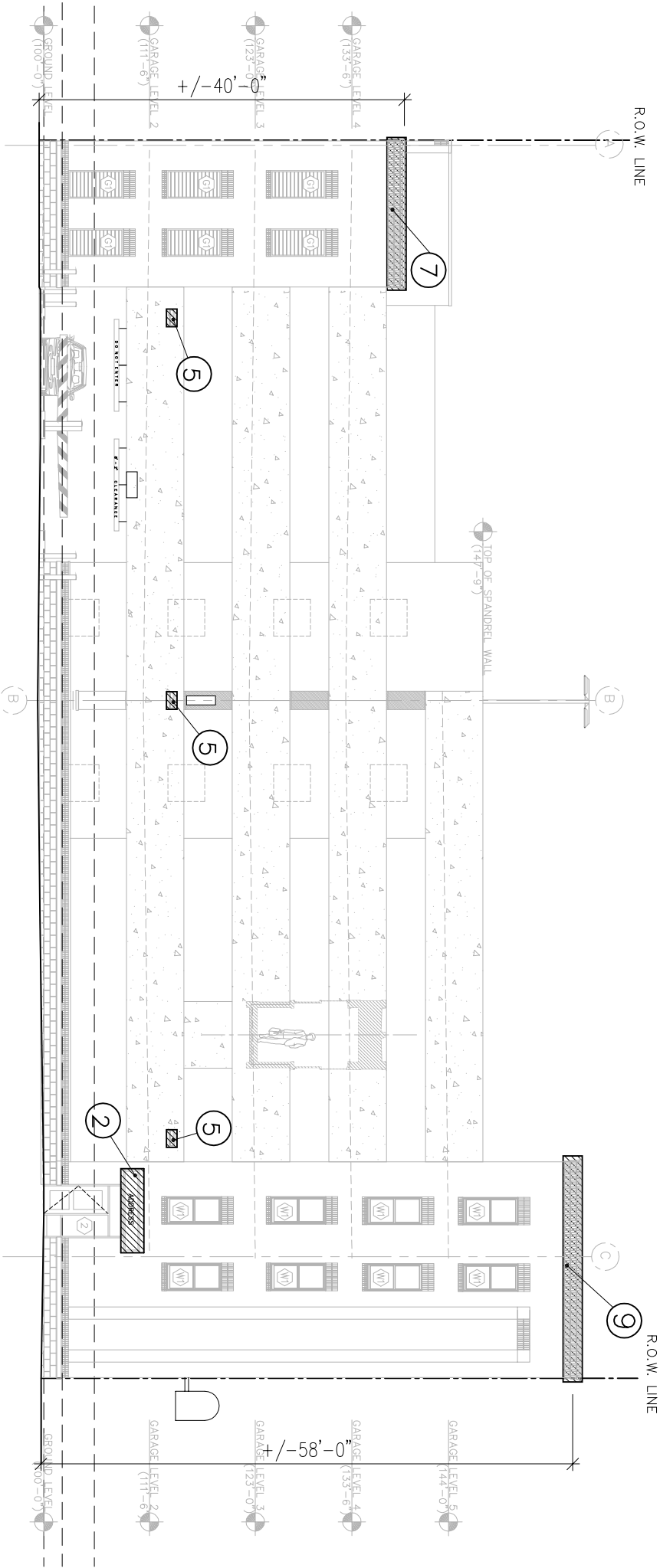
PRINT AT LEDGER SIZE ☒

SHEET 4 OF 6

RIGHT OF WAY ENCROACHMENT LEGEND

30, 32, 38, 44, 50 EAST HUBBARD AVENUE


ID	DESCRIPTION OF ENCROACHMENT	STREET	MAX. ENCROACHMENT INTO RIGHT-OF-WAY	APPROXIMATE HEIGHT ABOVE SIDEWALK (PVMT) RANGE	TOTAL NO. OF ENCROACHMENTS
①	STEP TO BROWNSTONE ENTRY	HUBBARD AVENUE	12"	7" – 9"	4
②	PARKING GARAGE ENTRY CANOPY	HUBBARD AVE. / PEARL ST.	3'-0"	8'-6" – 11'-0"	2
③	BROWNSTONE UNIT 32 ENTRY CANOPY	HUBBARD AVENUE	2'-6"	9'-6" – 15'-0"	1
④	BROWNSTONE UNIT 38, 44, 50 ENTRY CANOPY	HUBBARD AVENUE	2'-6"	9'-6" – 12'-0"	3
⑤	WALL MOUNTED LIGHT ON GARAGE	PEARL STREET	12"	13'-0" – 15'-0"	3
⑥	ROOF CORNICE AT BROWNSTONES	HUBBARD AVENUE	4"	36'-0" – 40'-0"	6 SECTIONS
⑦	ROOF CORNICE AT NW CORNER OF GARAGE	PEARL ST. / SHORT ALLEY	3"	38'-0" – 40'-0"	1 EA. STREET
⑧	ROOF CORNICE AT NE CORNER OF GARAGE	SHORT ALLEY	3"	39'-0" – 41'-0"	1
⑨	ROOF CORNICE AT SW CORNER OF GARAGE	HUBBARD AVE. / PEARL ST.	4"	56'-6" – 59'-0"	1 EA. STREET



WEST ELEVATION: PEARL STREET (GARAGE/BROWNSTONES)

SCALE NTS

PROJECT NUMBER: A12-036



ARCHITECTURAL ALLIANCE
165 FIFTH STREET
COLUMBUS, OH 43215
614.469.1745 609.050.011
E-MAIL: mail@archall.com

RIGHT OF WAY ENCROACHMENT DRAWINGS

THE HUBBARD

NORTH HIGH STREET & HUBBARD AVE.
COLUMBUS, OH 43215

DATE : SEPTEMBER 16, 2013

SCALE : NTS

PRINT AT LETTER SIZE ☐

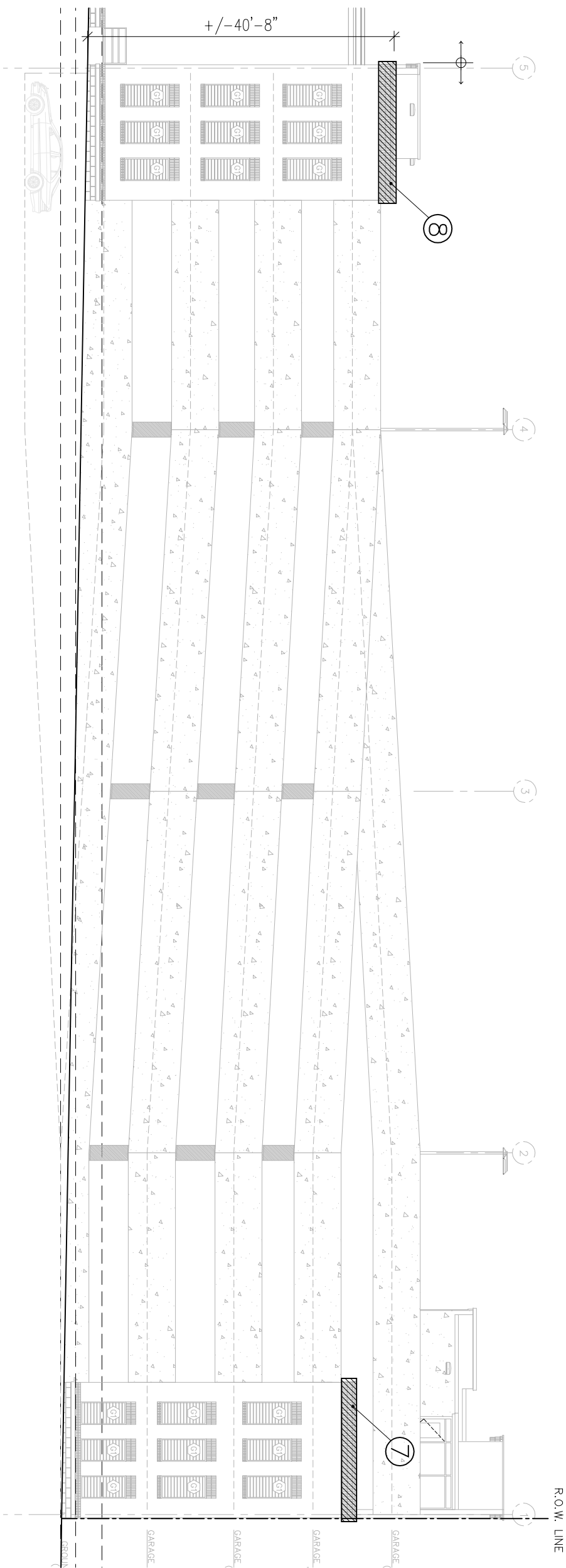
PRINT AT LEDGER SIZE ☒

SHEET 5 OF 6

RIGHT OF WAY ENCROACHMENT LEGEND


30, 32, 38, 44, 50 EAST HUBBARD AVENUE

ID	DESCRIPTION OF ENCROACHMENT	STREET	MAX. ENCROACHMENT INTO RIGHT-OF-WAY	APPROXIMATE HEIGHT ABOVE SIDEWALK (PVMT) RANGE	TOTAL NO. OF ENCROACHMENTS
①	STEP TO BROWNSTONE ENTRY	HUBBARD AVENUE	12"	7" – 9"	4
②	PARKING GARAGE ENTRY CANOPY	HUBBARD AVE. / PEARL ST.	3'-0"	8'-6" – 11'-0"	2
③	BROWNSTONE UNIT 32 ENTRY CANOPY	HUBBARD AVENUE	2'-6"	9'-6" – 15'-0"	1
④	BROWNSTONE UNIT 38, 44, 50 ENTRY CANOPY	HUBBARD AVENUE	2'-6"	9'-6" – 12'-0"	3
⑤	WALL MOUNTED LIGHT ON GARAGE	PEARL STREET	12"	13'-0" – 15'-0"	3
⑥	ROOF CORNICE AT BROWNSTONES	HUBBARD AVENUE	4"	36'-0" – 40'-0"	6 SECTIONS
⑦	ROOF CORNICE AT NW CORNER OF GARAGE	PEARL ST. / SHORT ALLEY	3"	38'-0" – 40'-0"	1 EA. STREET
⑧	ROOF CORNICE AT NE CORNER OF GARAGE	SHORT ALLEY	3"	39'-0" – 41'-0"	1
⑨	ROOF CORNICE AT SW CORNER OF GARAGE	HUBBARD AVE. / PEARL ST.	4"	56'-6" – 59'-0"	1 EA. STREET



NORTH ELEVATION: GARAGE

SCALE NTS

PROJECT NUMBER: A12-036		RIGHT OF WAY ENCROACHMENT DRAWINGS		
 <div> ARCHITECTURAL ALLIANCE 1 6 5 F I F T H O R T H S T R E E T C O L U M B U S O 4 3 2 1 5 6 1 4 . F A X 6 9 1 7 4 5 4 0 6 0 9 . 0 5 0 0 E - M A I L : mail@archall.com </div>		<div> THE HUBBARD NORTH HIGH STREET & HUBBARD AVE. COLUMBUS, OH 43215 </div>		
		DATE : SEPTEMBER 16, 2013	PRINT AT LETTER SIZE <input type="checkbox"/>	SHEET 6 OF 6
		SCALE : NTS	PRINT AT LEDGER SIZE <input checked="" type="checkbox"/>	