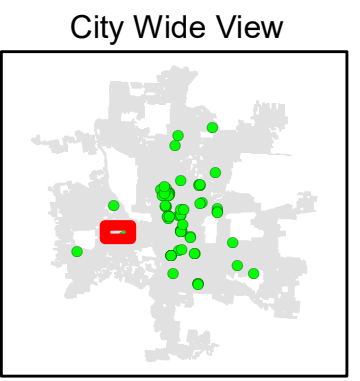
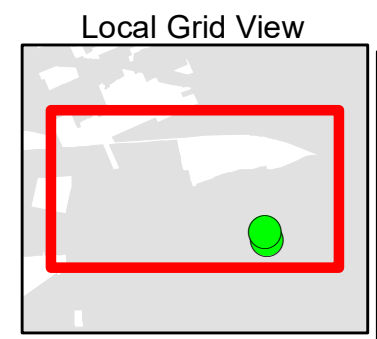


CITY OF COLUMBUS  
DEPARTMENT OF PUBLIC SERVICE  
DIVISION OF DESIGN AND CONSTRUCTION  
IN-HOUSE DESIGN

2023 CDBG CITYWIDE  
CURB RAMPS

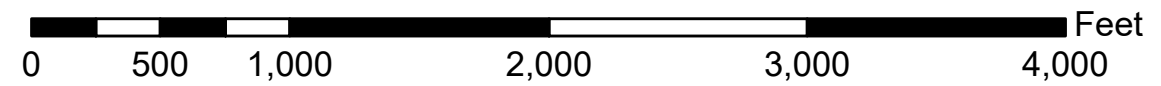
MAP SHEET: 1

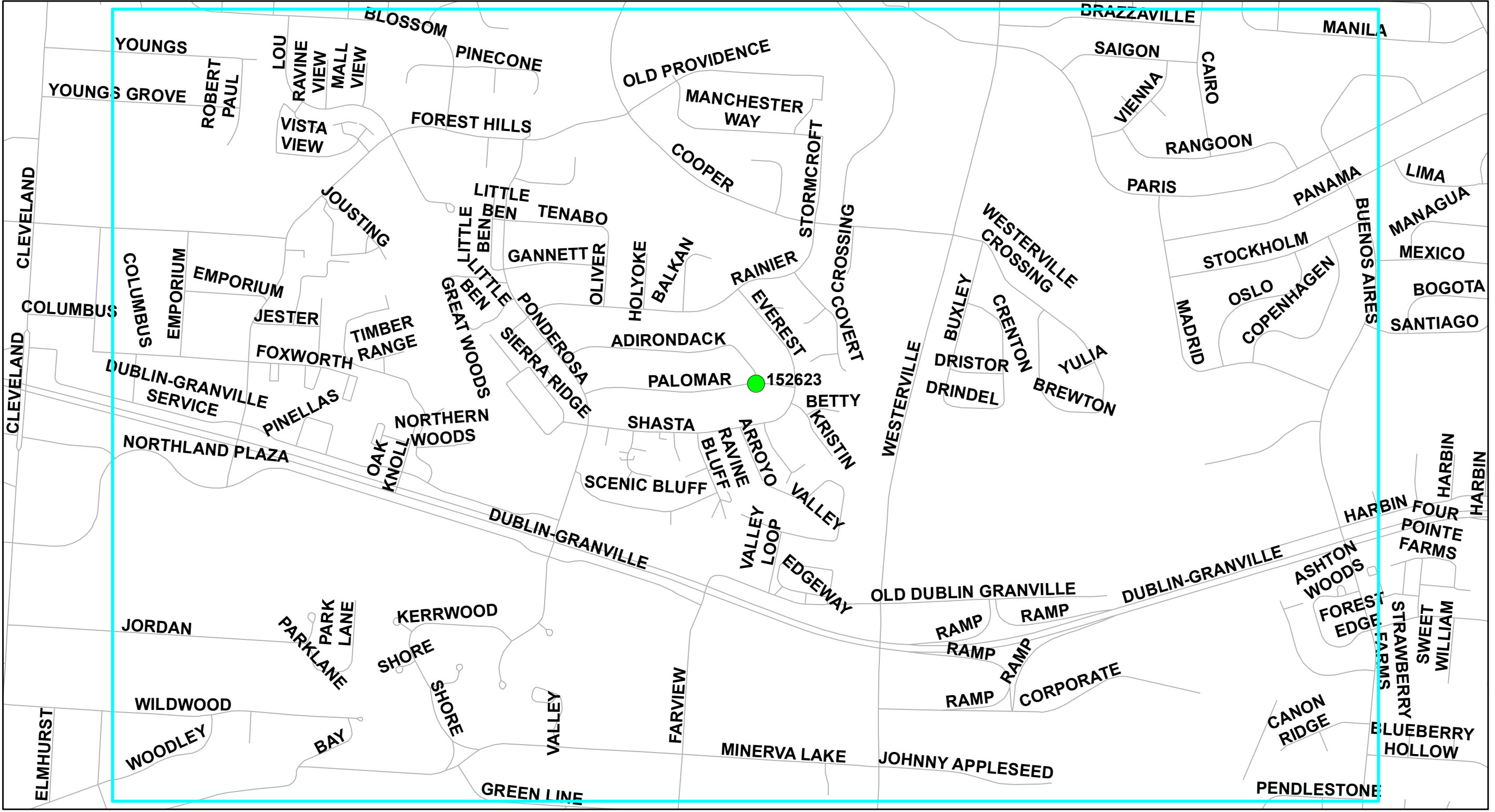
MAP SHOWS LOCATION OF  
INTERSECTIONS INCLUDED  
IN THIS PROJECT



Grid Reference

2

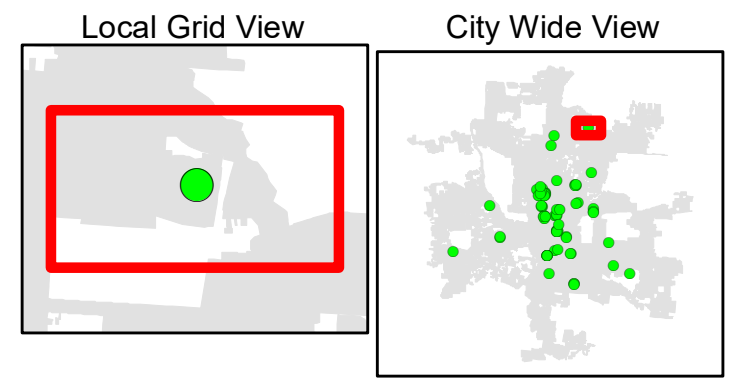




<p>THE CITY OF <b>COLUMBUS</b> ANDREW J. GINTHER, MAYOR</p> <p>DEPARTMENT OF PUBLIC SERVICE</p>	<p>CITY OF COLUMBUS DEPARTMENT OF PUBLIC SERVICE DIVISION OF DESIGN AND CONSTRUCTION IN-HOUSE DESIGN</p>	<p>2023 CDBG CITYWIDE CURB RAMPS</p>
---	--	--

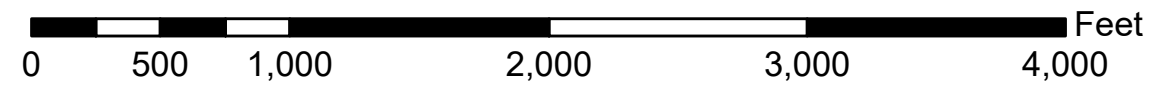
**MAP SHEET: 2**

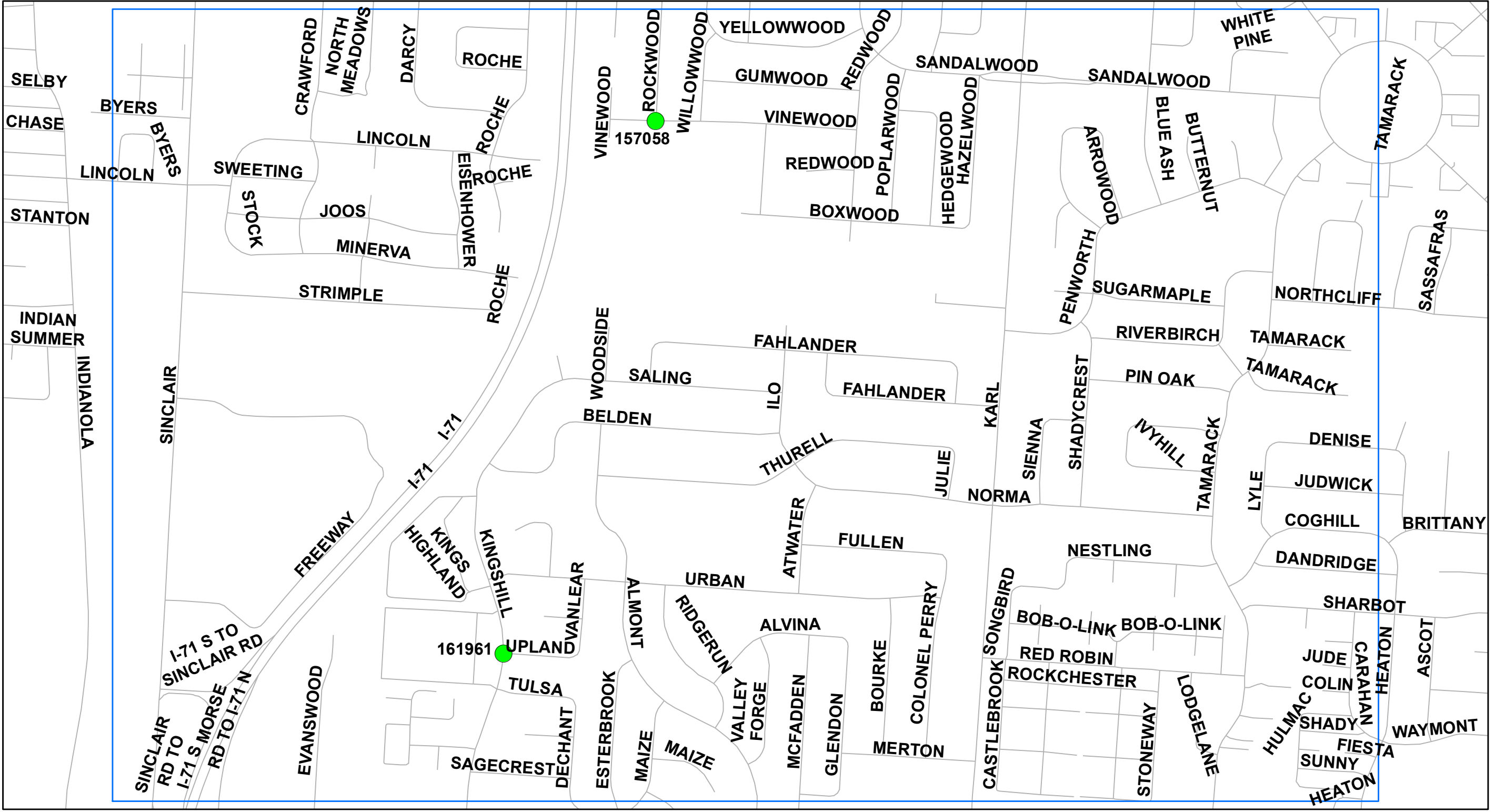
MAP SHOWS LOCATION OF INTERSECTIONS INCLUDED IN THIS PROJECT



Grid Reference

1



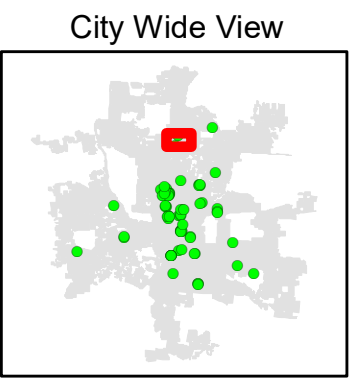
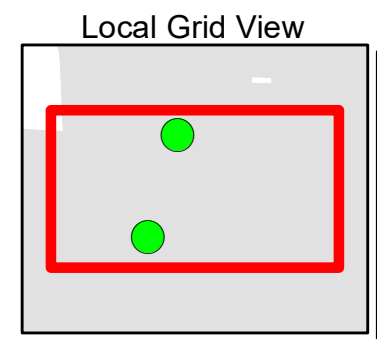
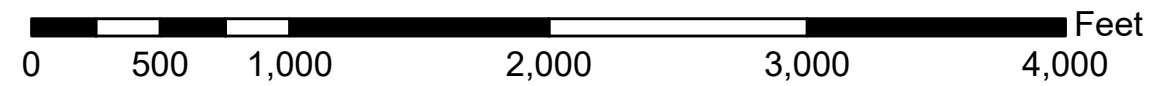
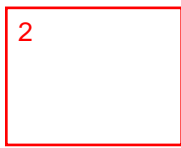


CITY OF COLUMBUS  
DEPARTMENT OF PUBLIC SERVICE  
DIVISION OF DESIGN AND CONSTRUCTION  
IN-HOUSE DESIGN

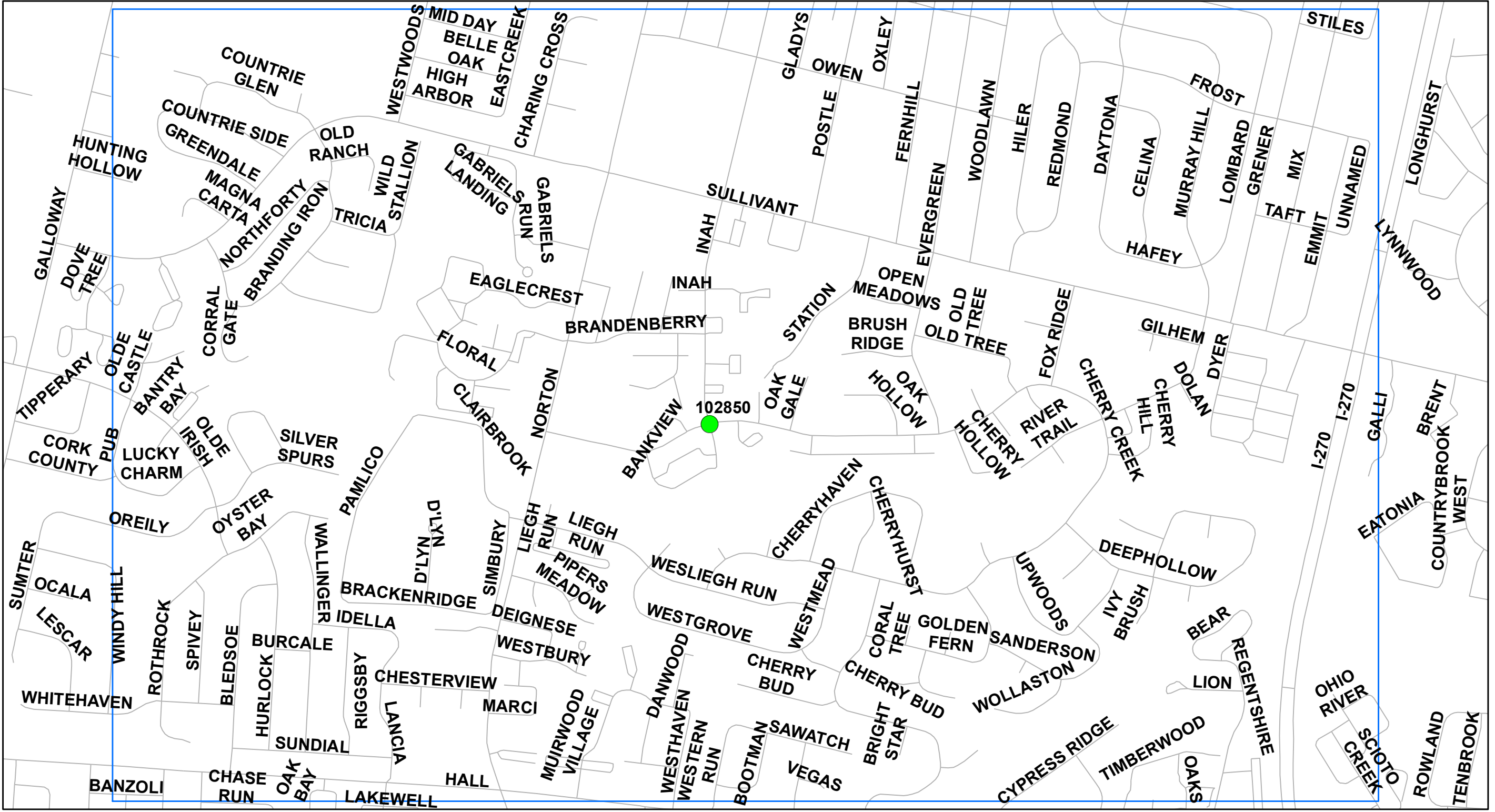
2023 CDBG CITYWIDE  
CURB RAMPS

MAP SHEET: 3

MAP SHOWS LOCATION OF  
INTERSECTIONS INCLUDED  
IN THIS PROJECT



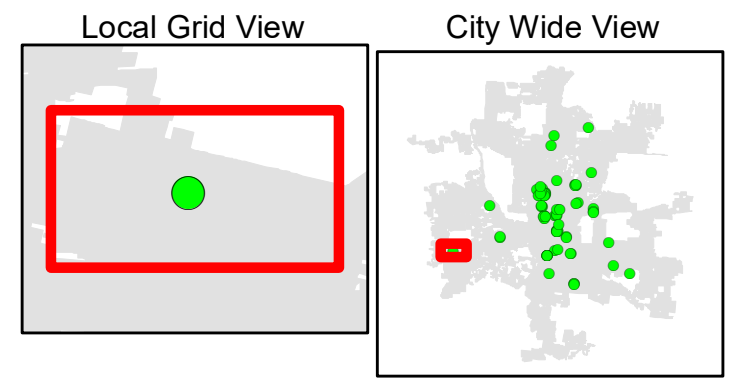
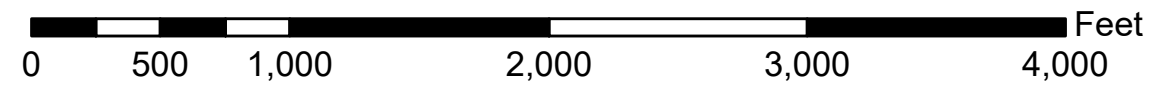
Grid Reference



<p><b>THE CITY OF COLUMBUS</b> ANDREW J. GINTHER, MAYOR DEPARTMENT OF PUBLIC SERVICE</p>	<p>CITY OF COLUMBUS DEPARTMENT OF PUBLIC SERVICE DIVISION OF DESIGN AND CONSTRUCTION IN-HOUSE DESIGN</p>	<p>2023 CDBG CITYWIDE CURB RAMPS</p>
--	--	--------------------------------------

**MAP SHEET: 4**

MAP SHOWS LOCATION OF INTERSECTIONS INCLUDED IN THIS PROJECT

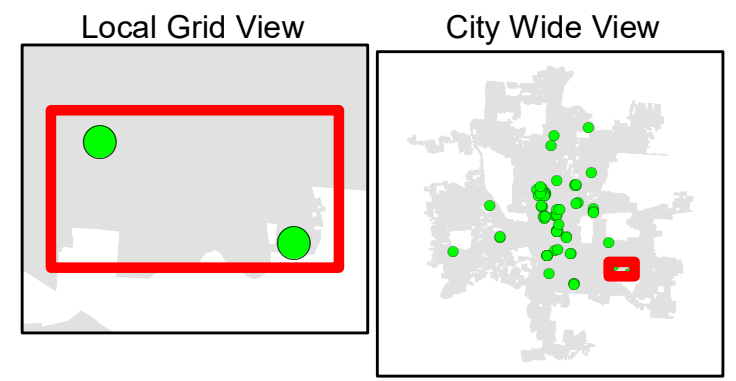


Grid Reference

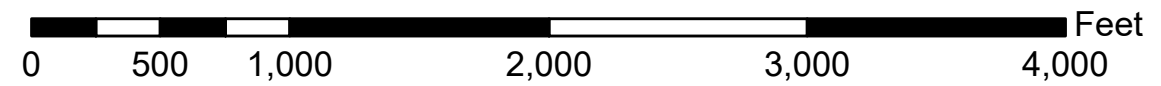


<p><b>THE CITY OF COLUMBUS</b> ANDREW J. GINTHER, MAYOR DEPARTMENT OF PUBLIC SERVICE</p>	<p>CITY OF COLUMBUS DEPARTMENT OF PUBLIC SERVICE DIVISION OF DESIGN AND CONSTRUCTION IN-HOUSE DESIGN</p>	<p>2023 CDBG CITYWIDE CURB RAMPS</p>
--	--	--

**MAP SHEET: 5**  
MAP SHOWS LOCATION OF INTERSECTIONS INCLUDED IN THIS PROJECT



2



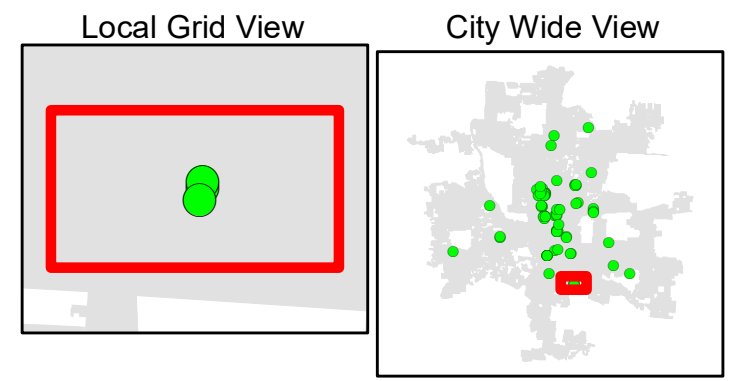
Grid Reference



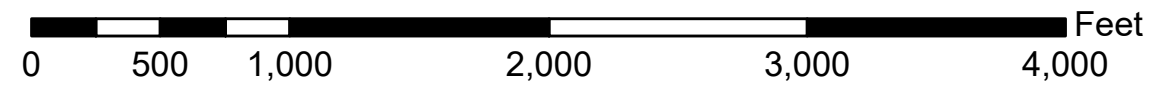
<p>THE CITY OF <b>COLUMBUS</b> ANDREW J. GINTHER, MAYOR</p> <p>DEPARTMENT OF PUBLIC SERVICE</p>	<p>CITY OF COLUMBUS DEPARTMENT OF PUBLIC SERVICE DIVISION OF DESIGN AND CONSTRUCTION IN-HOUSE DESIGN</p>	<p>2023 CDBG CITYWIDE CURB RAMPS</p>
---	--	--

**MAP SHEET: 6**

MAP SHOWS LOCATION OF INTERSECTIONS INCLUDED IN THIS PROJECT



3

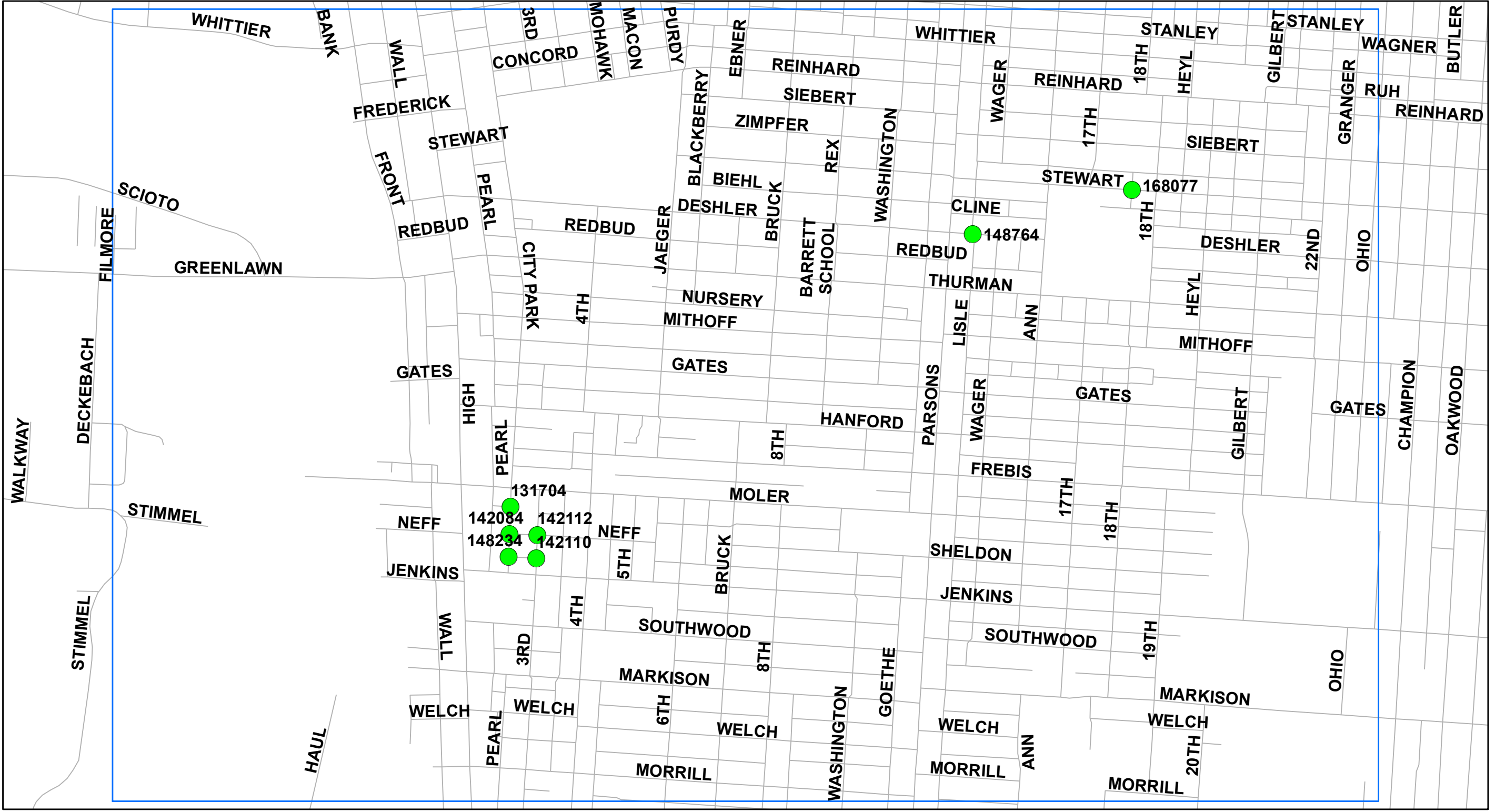


Grid Reference







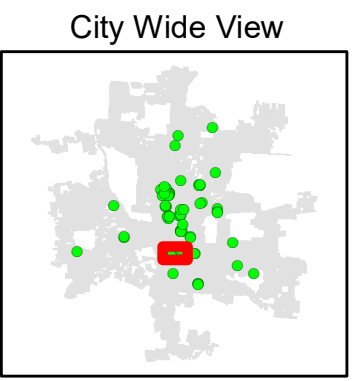
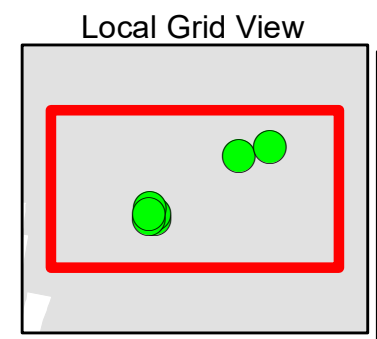


CITY OF COLUMBUS  
DEPARTMENT OF PUBLIC SERVICE  
DIVISION OF DESIGN AND CONSTRUCTION  
IN-HOUSE DESIGN

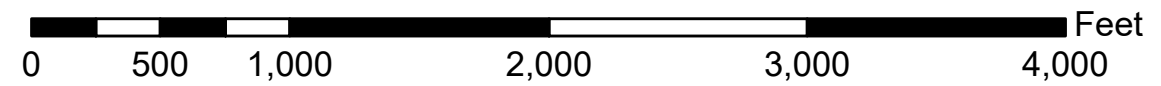
2023 CDBG CITYWIDE  
CURB RAMPS

MAP SHEET: 9

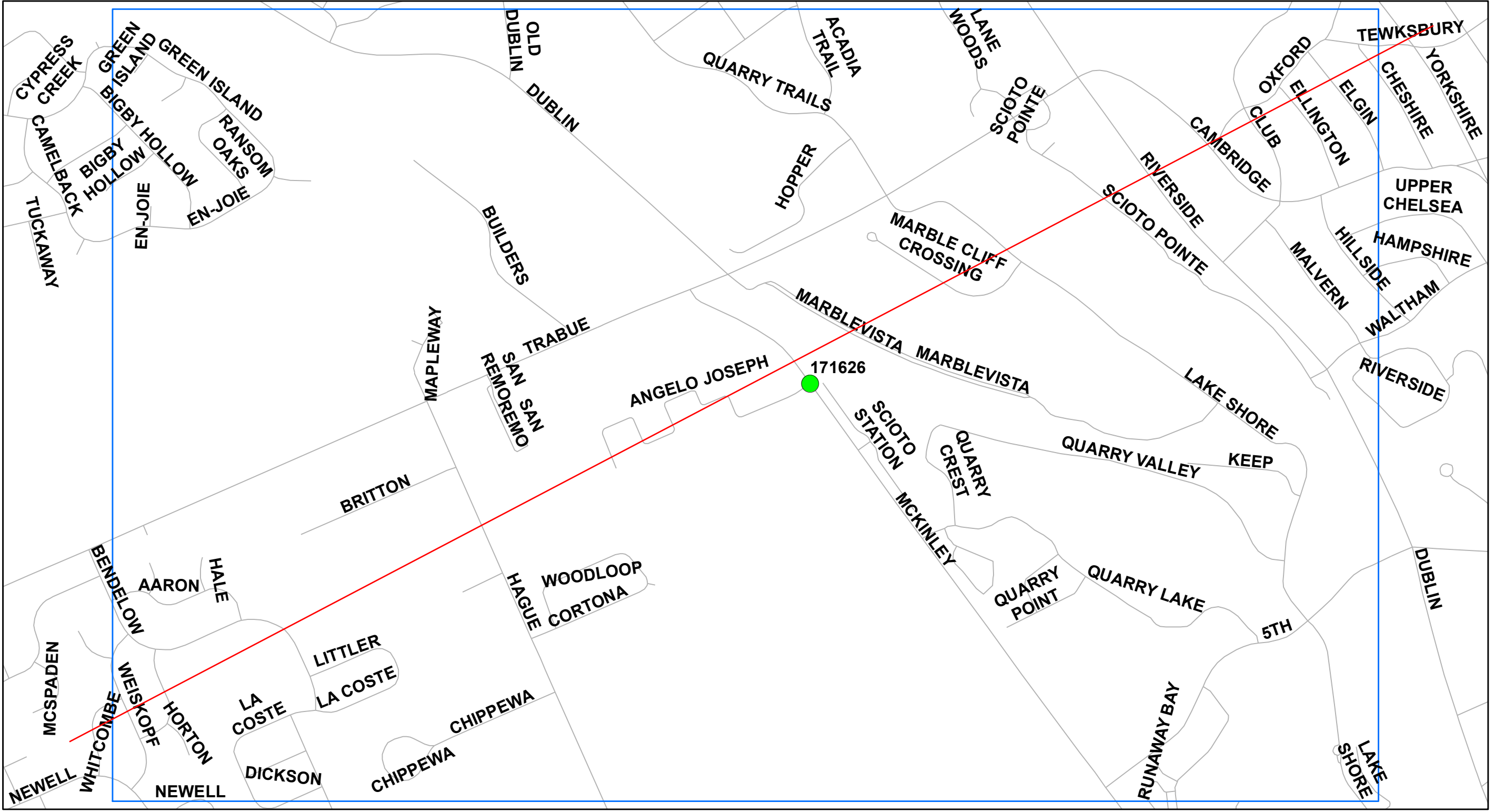
MAP SHOWS LOCATION OF  
INTERSECTIONS INCLUDED  
IN THIS PROJECT



Grid Reference



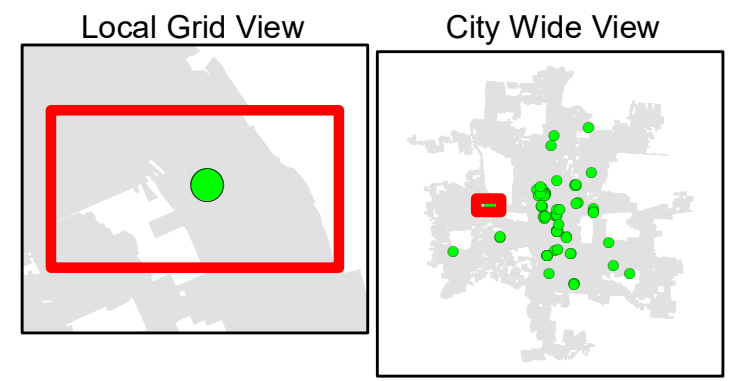
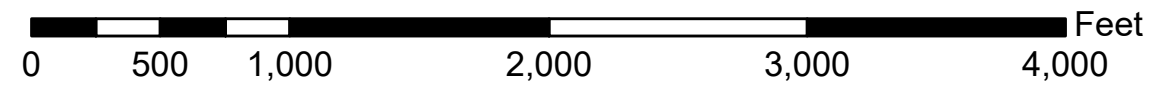




<p>THE CITY OF <b>COLUMBUS</b> ANDREW J. GINTHER, MAYOR DEPARTMENT OF PUBLIC SERVICE</p>	<p>CITY OF COLUMBUS DEPARTMENT OF PUBLIC SERVICE DIVISION OF DESIGN AND CONSTRUCTION IN-HOUSE DESIGN</p>	<p>2023 CDBG CITYWIDE CURB RAMPS</p>
--	--	--

**MAP SHEET: 11**

MAP SHOWS LOCATION OF INTERSECTIONS INCLUDED IN THIS PROJECT



Grid Reference



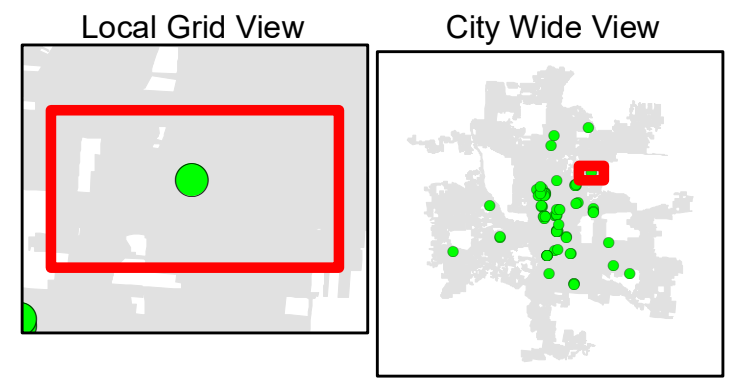
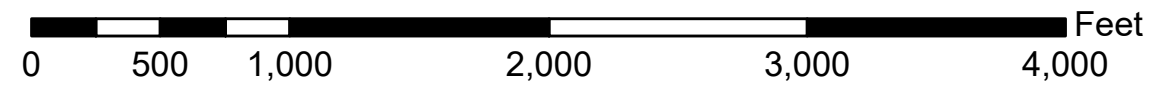
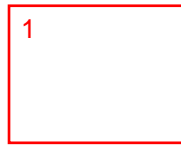




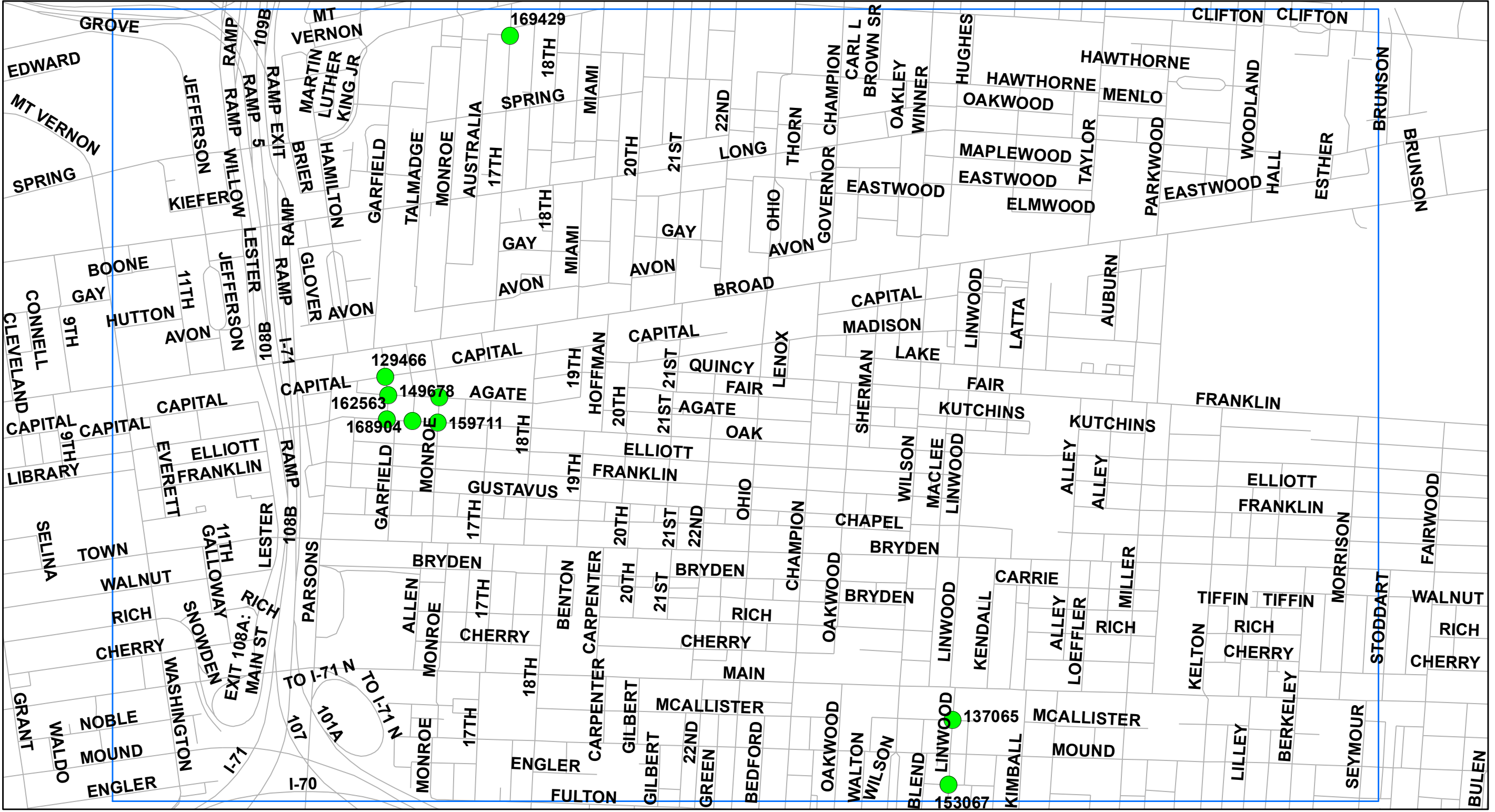
	<p>CITY OF COLUMBUS DEPARTMENT OF PUBLIC SERVICE DIVISION OF DESIGN AND CONSTRUCTION IN-HOUSE DESIGN</p>	<p>2023 CDBG CITYWIDE CURB RAMPS</p>
--	--	--

**MAP SHEET: 14**

MAP SHOWS LOCATION OF INTERSECTIONS INCLUDED IN THIS PROJECT



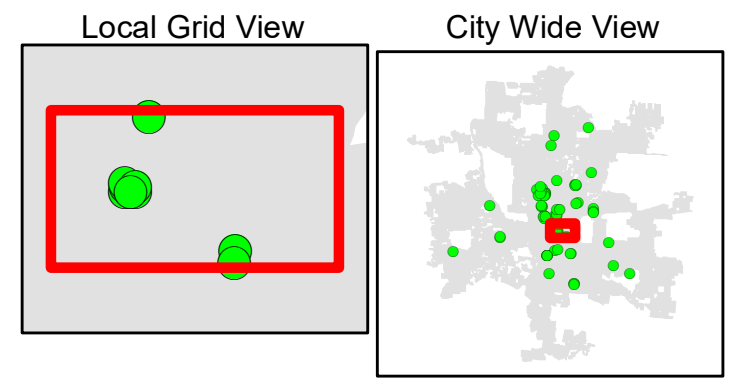
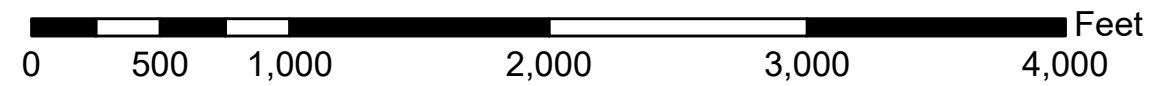
Grid Reference



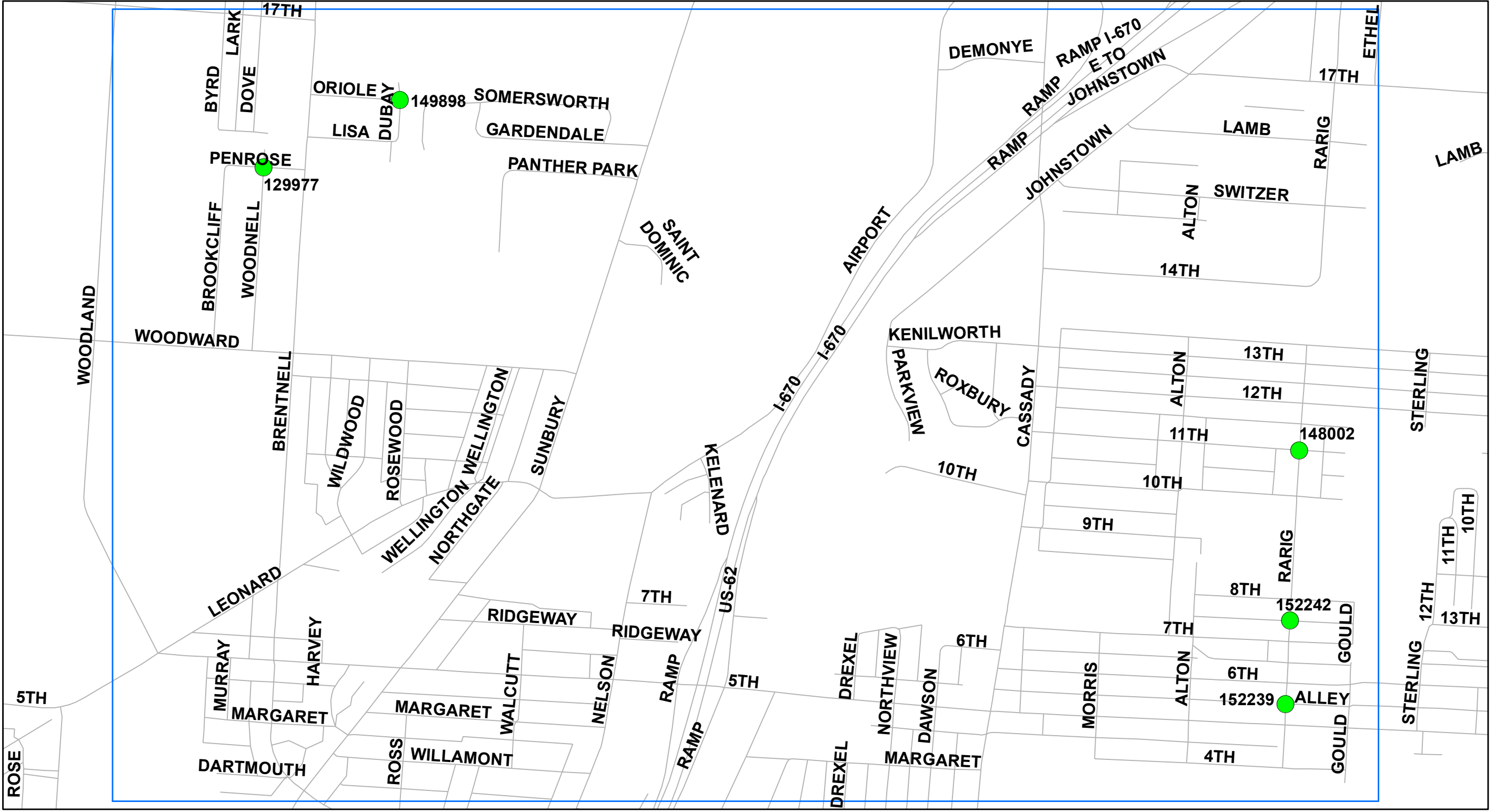
<p>THE CITY OF <b>COLUMBUS</b> ANDREW J. GINTHER, MAYOR</p> <p>DEPARTMENT OF PUBLIC SERVICE</p>	<p>CITY OF COLUMBUS DEPARTMENT OF PUBLIC SERVICE DIVISION OF DESIGN AND CONSTRUCTION IN-HOUSE DESIGN</p>	<p>2023 CDBG CITYWIDE CURB RAMPS</p>
---	--	--

**MAP SHEET: 15**

MAP SHOWS LOCATION OF INTERSECTIONS INCLUDED IN THIS PROJECT



Grid Reference

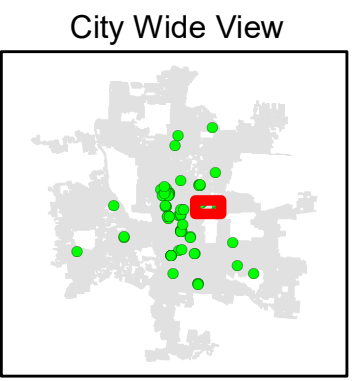
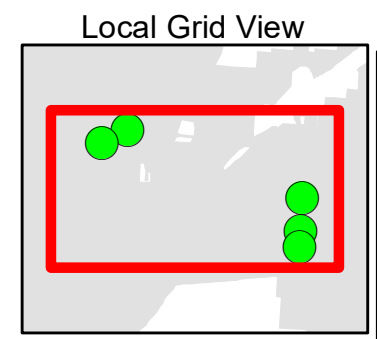
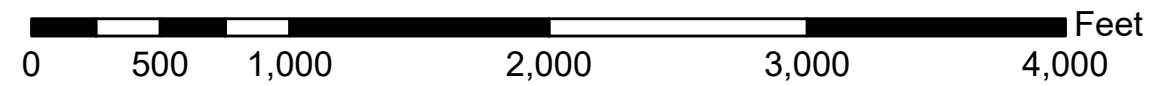
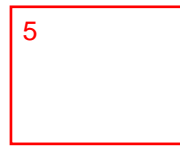


CITY OF COLUMBUS  
DEPARTMENT OF PUBLIC SERVICE  
DIVISION OF DESIGN AND CONSTRUCTION  
IN-HOUSE DESIGN

2023 CDBG CITYWIDE  
CURB RAMPS

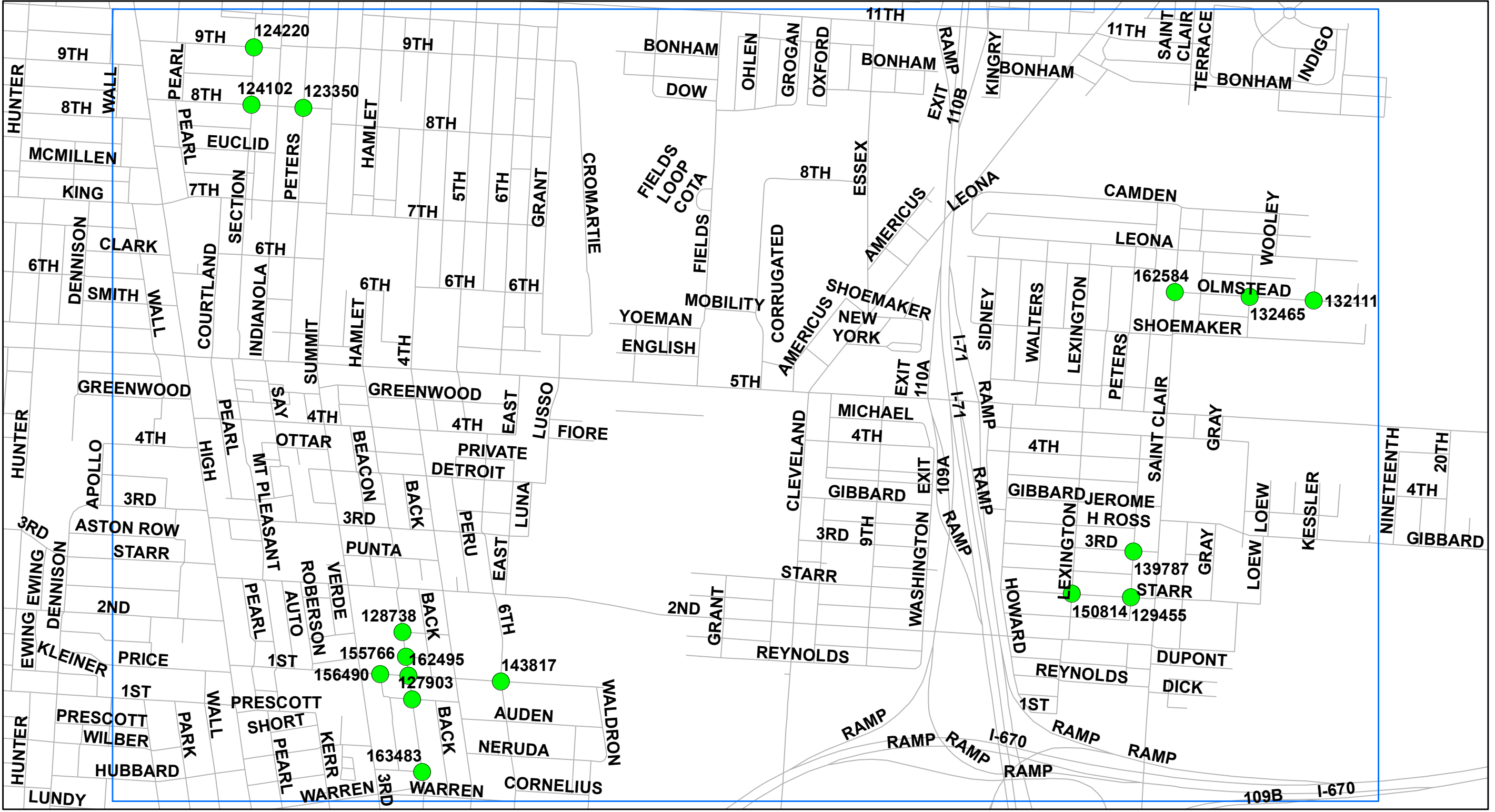
MAP SHEET: 16

MAP SHOWS LOCATION OF  
INTERSECTIONS INCLUDED  
IN THIS PROJECT



Grid Reference





THE CITY OF COLUMBUS  
ANDREW J. GINTHER, MAYOR  
DEPARTMENT OF PUBLIC SERVICE

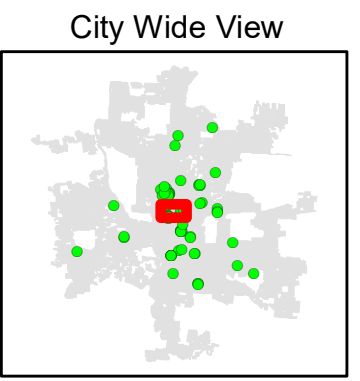
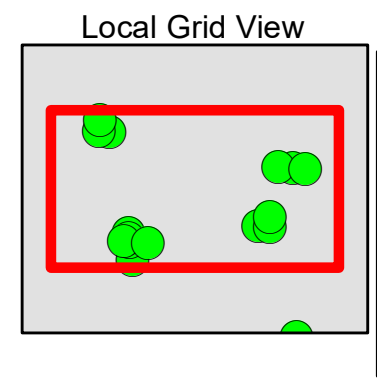
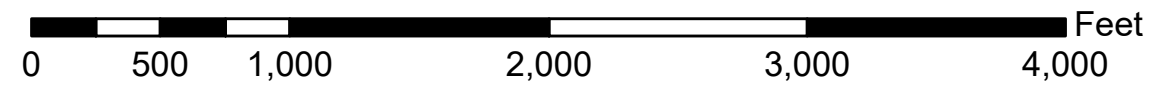
CITY OF COLUMBUS  
DEPARTMENT OF PUBLIC SERVICE  
DIVISION OF DESIGN AND CONSTRUCTION  
IN-HOUSE DESIGN

2023 CDBG CITYWIDE  
CURB RAMPS

MAP SHEET: 17

MAP SHOWS LOCATION OF INTERSECTIONS INCLUDED IN THIS PROJECT

16



Grid Reference