

## DISPOSAL OF EXCESS RIGHT-OF-WAY SECTION 11, TOWNSHIP 5, RANGE 22 REFUGEE LANDS CITY OF COLUMBUS, FRANKLIN COUNTY, OHIO

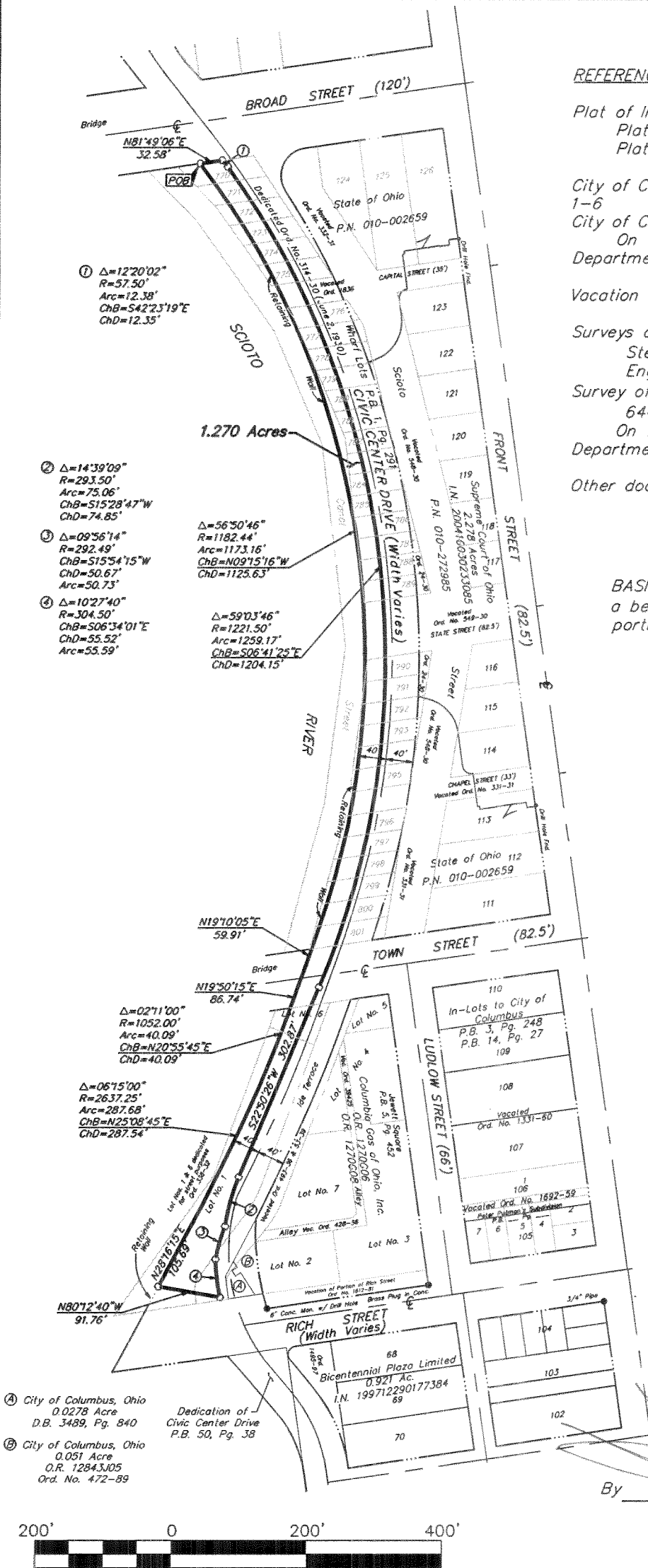
Date: December 12, 2007

Job No. 2007-1335

Scale: 1" = 200'

M C M X X V I

\\CMHDATA1\SURVEY\PROJECT\20071335\DWG\71335BV8\14.DWG<LEGAL PORTRAIT> - NO XREFS - LAST SAVED BY JMASTON [12/12/2007 12:56:06 PM] - PLOTTED BY JMASTON [12/12/2007 12:56:06 PM]



### REFERENCES:

- Plat of In-Lots to the City of Columbus  
Plat Book 3, Page 248  
Plat Book 14, Page 27
- City of Columbus 60 Scale Mapping Sheets 1-3 and 1-6
- City of Columbus Marble Map Sheets 104 and 123  
On file at the City of Columbus Engineering Department
- Vacation ordinances as shown hereon
- Surveys of 2.278 acres and remainder tracts by Steven L. Lamphear (P.S. 7876), Columbus Engineering Associates
- Survey of 1.773 acres by Walter A. Dodson (P.S. 6446), Columbia Gas of Ohio, Inc.  
On file at the Franklin County Engineering Department
- Other documentation as shown hereon

**BASIS OF BEARINGS:** Bearings are based on a bearing of North 08° 08' 35" West for a portion of the centerline of High Street.

- = STONE FND.
- = MON. FND.
- = I.P. FND.
- = I.P. SET
- = MAG. NAIL FND.
- = MAG. NAIL SET
- ▲ = R.R. SPK. FND.
- △ = R.R. SPK. SET
- ◆ = P.K. NAIL FND.

I.P. Set are 13/16" I.D. iron pipe with cap inscribed EMHT INC



By \_\_\_\_\_  
Professional Surveyor No. 8250



GRAPHIC SCALE  
(IN FEET)