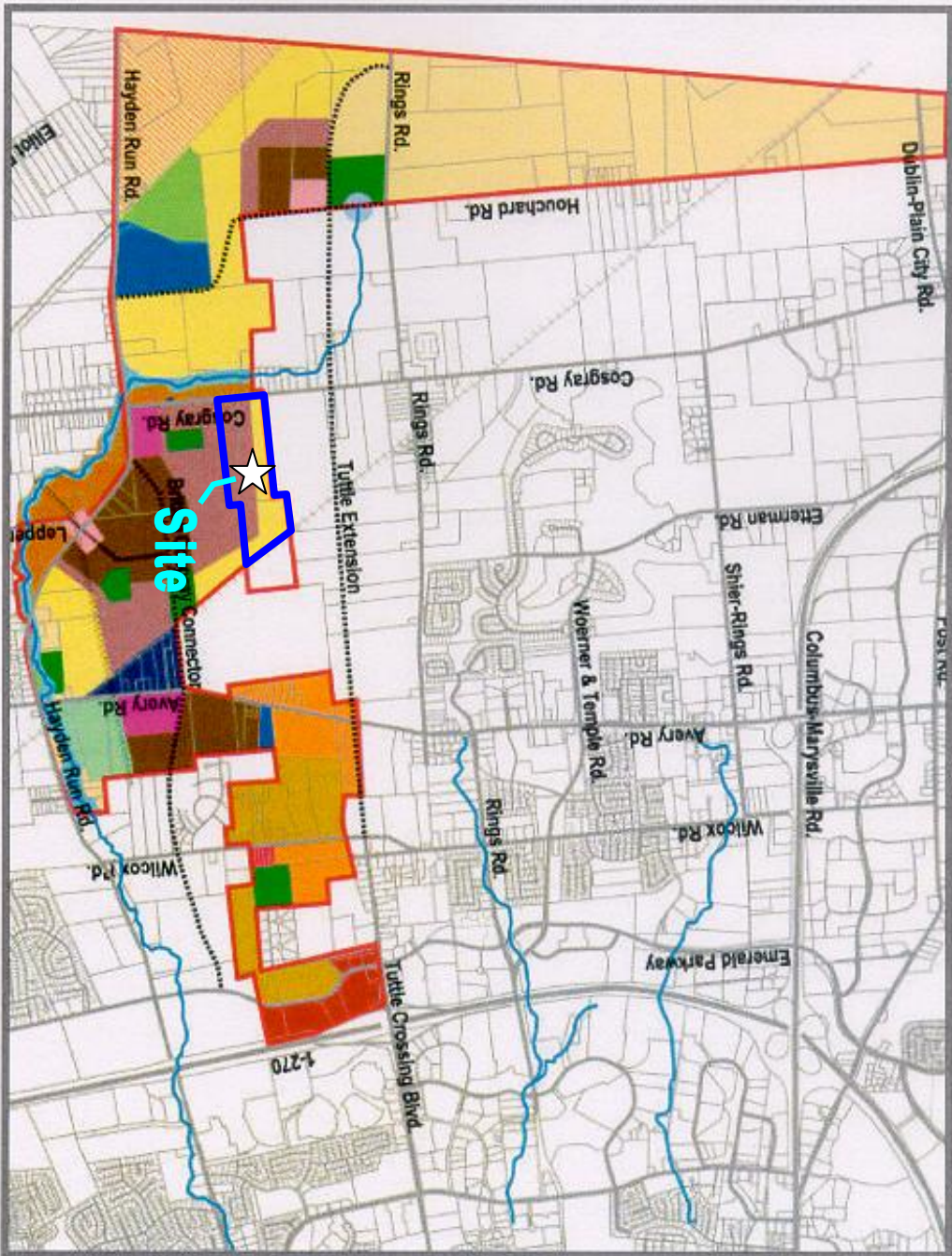


# PROPOSED LAND USE MAP

## Interim Hayden Run Corridor Plan (2003)



- Proposed Major Roads
- Fuel Line
- Existing Public Facilities
- Cluster Development
- Existing Park
- Existing Multi-Family
- Existing Commercial
- Neighborhood Edge
- Neighborhood General
- Neighborhood Center
- Town Center
- Transit Oriented Dev.
- Community Center/School
- Community Commercial
- Neighborhood Commercial
- Low Density Cluster
- Park
- Office
- Hayden Run Buffer
- Hayden Run Spring
- Environmentally Sensitive Development Area
- Service Boundary

