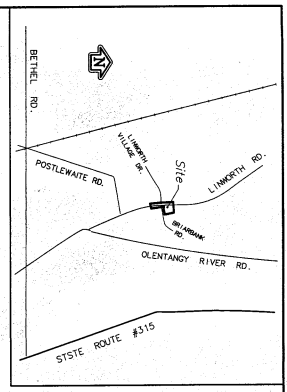


# ANNEXATION AN11-002

## ± .93 Acres in Sharon Township

### William H. and Rebecca J. Campbell



**RECEIVED**

FEB 10 2011

Franklin County Engineer  
Darin C. Hughes, P.E., P.S.

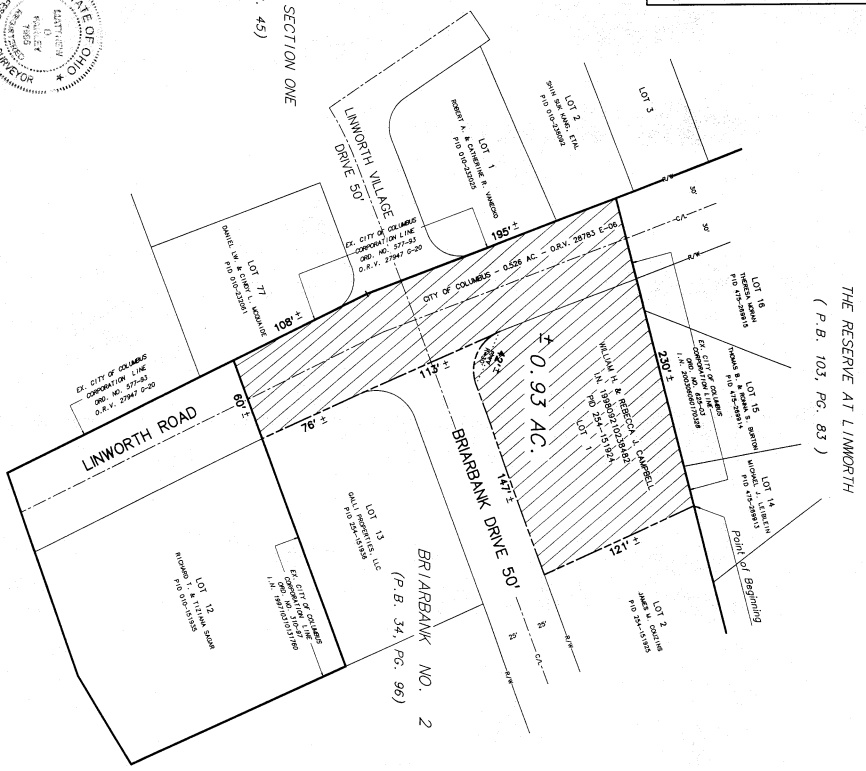
LINWORTH VILLAGE SECTION ONE  
(P.B. 82, PG. 45)



BY: *Matthew D. Ferley*  
Matthew D. Ferley, Professional Surveyor No. 7566

**myerssurveying**  
2740 Dahl Main Street Columbus, OH 43229  
614.235.4877  
mferley@myerssurveying.com

0.93 ACRE ANNEXATION TO THE CITY OF COLUMBUS  
SITUATED IN THE STATE OF OHIO, COUNTY OF FRANKLIN, TOWNSHIP OF SHARON



Scale 1" = 50'  
February 3, 2011

Annexation Plot

AREA TO BE ANNEXED



Existing City of Columbus Corporation Line

Proposed City of Columbus Corporation Line

ANNEXATION  
PLAT & DESCRIPTION  
ACCEPTABLE FOR RECORD  
FRANKLIN COUNTY ENGINEER  
By: *[Signature]* Date: 2/10/11

FILE COPY