

Exhibit A



Korda/Nemeth Engineering, Inc - Consulting Engineers
1650 Watermark Drive, Suite 200 - Columbus, Ohio 43215-7010
TEL: 614-487-1650 FAX: 614-487-8981 WEB: www.korda.com

DESCRIPTION OF A 0.453 ACRE UTILITY EASEMENT

Being situated in the State of Ohio, County of Franklin, Township of Clinton, City of Columbus and being part of vacated West Woodruff Avenue by Ordinance No. 919-75 of the City Bulletin and the original RP Woodruff's Subdivision Plat Book 2, Page 206 and also being part of an original 60.82 acre tract conveyed to the State of Ohio by deed of record in Volume 103, Page 552 of the Franklin County Recorder's Office and being more particularly described as follows:

BEGINNING from the intersection of the northerly vacated right of way line of Woodruff Avenue (60 feet wide) and the westerly right of way line of North High Street (width varies):

Thence **South 08° 14' 37" East** a distance of **820.42 feet** along the westerly right of way line of North High Street to a point;

Thence **South 81° 45' 23" West** a distance of **20.00 feet** leaving said westerly right of way line across the grantor's property to a point;

Thence **North 08° 14' 37" West** a distance of **255.01 feet** continuing across the grantor's property to a point;

Thence **South 81° 45' 23" West** a distance of **30.00 feet** continuing across the grantor's property to a point;

Thence **North 08° 14' 37" West** a distance of **110.00 feet** continuing across the grantor's property to a point;

Thence **North 81° 45' 23" East** a distance of **30.00 feet** continuing across the grantor's property to a point;

Thence **North 08° 14' 37" West** a distance of **459.71 feet** continuing across the grantor's property to a point;

Thence **South 86° 06' 24" East** a distance of **20.46 feet** to the **True Point of Beginning** and containing **0.453 Acres**, more or less, located in Auditor's Parcel No. 010-067007-00 and a portion of vacated West Woodruff Avenue by Ordinance No. 919-75. Subject to all legal easements, agreements and rights-of-way of record.

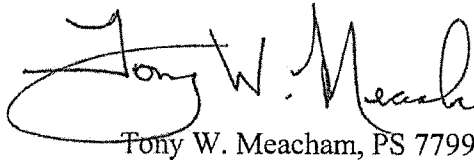


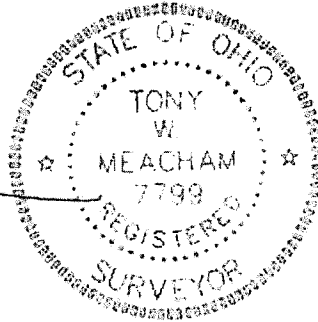
Korda/Nemeth Engineering, Inc - Consulting Engineers
1650 Watermark Drive, Suite 200 - Columbus, Ohio 43215-7010
TEL: 614-487-1650 FAX: 614-487-8981 WEB:www.korda.com

DESCRIPTION OF A 0.453 ACRE UTILITY EASEMENT

This description was prepared by Tony W. Meacham, Ohio Professional Surveyor Number 7799 from an actual field survey performed by Korda/Nemeth Engineering, Inc. in July 2010.

The bearings in this description are based on State Plane Ground, South Zone, NAD83(86) occupying Franklin County Monuments "Ringle" and "Latitude Stone Reset". The ground to grid scale factor is 0.99996288. This survey was completed by traversing from the Franklin County Engineer's Monument's using conventional survey methods and placing the ground coordinates by utilizing the average of the published grid factors from the subject monuments.


Tony W. Meacham, PS 7799



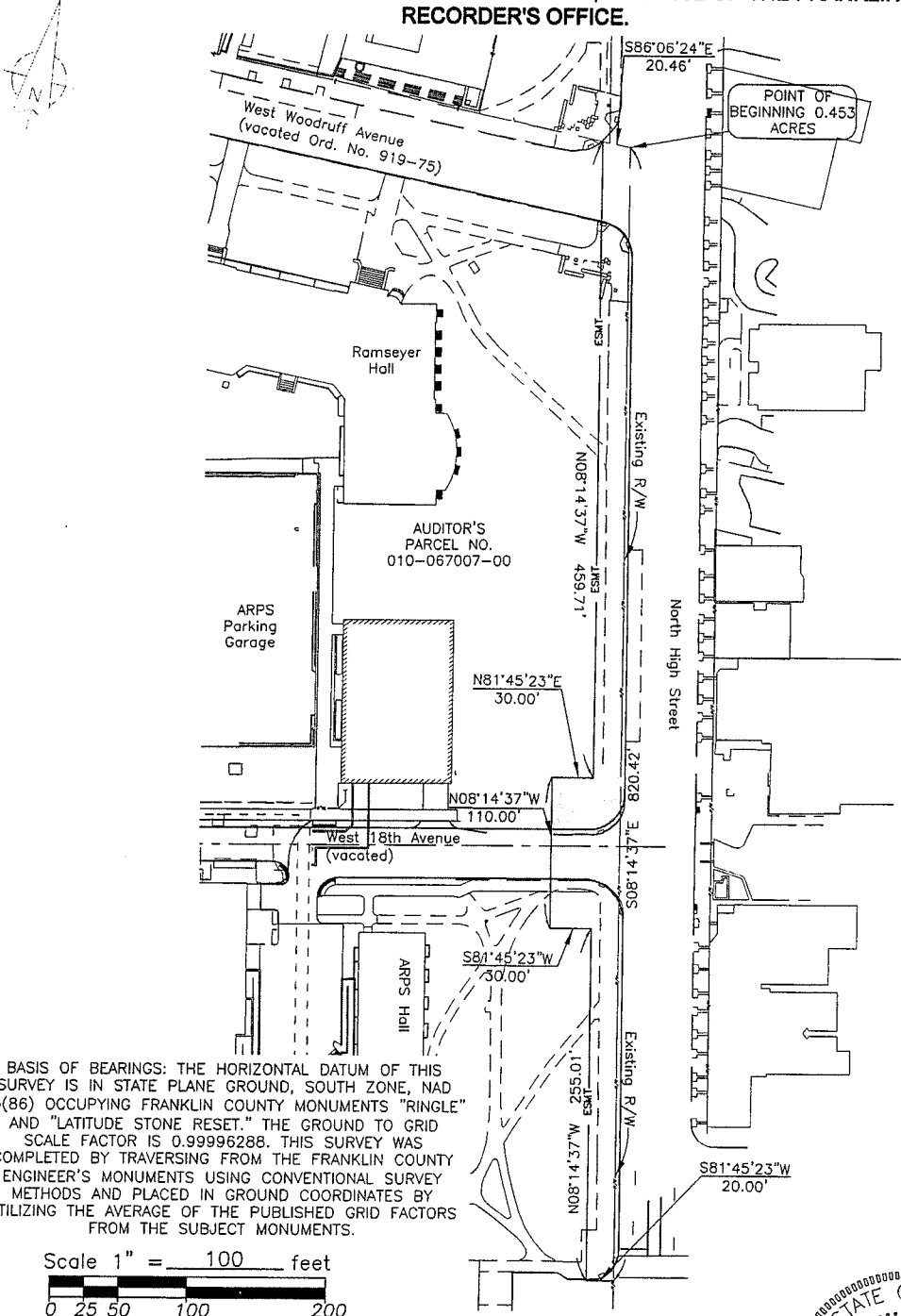
April 15, 2015
Date



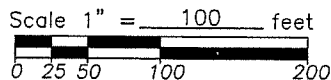
Korda/Nemeth Engineering, Inc - Consulting Engineers
 1650 Watermark Drive, Suite 200 - Columbus, Ohio 43215-7010
 TEL: 614-487-1650 FAX: 614-487-8981 WEB:www.korda.com

0.453 ACRE UTILITY EASEMENT

SITUATED IN THE STATE OF OHIO, COUNTY OF FRANKLIN, TOWNSHIP OF CLINTON, CITY OF COLUMBUS, BEING PART OF VACATED WEST WOODRUFF AVENUE BY ORDINANCE NO. 919-75 OF THE CITY BULLETIN AND THE ORIGINAL RP WOODRUFF SUBDIVISION BY PLAT BOOK 2, PAGE 206 AND ALSO BEING PART OF AN ORIGINAL 60.82 ACRE TRACT CONVEYED TO THE STATE OF OHIO BY DEED OF RECORD IN VOLUME 103, PAGE 552 OF THE FRANKLIN COUNTY RECORDER'S OFFICE.



BASIS OF BEARINGS: THE HORIZONTAL DATUM OF THIS SURVEY IS IN STATE PLANE GROUND, SOUTH ZONE, NAD 83(86) OCCUPYING FRANKLIN COUNTY MONUMENTS "RINGLE" AND "LATITUDE STONE RESET." THE GROUND TO GRID SCALE FACTOR IS 0.99996288. THIS SURVEY WAS COMPLETED BY TRAVERSING FROM THE FRANKLIN COUNTY ENGINEER'S MONUMENTS USING CONVENTIONAL SURVEY METHODS AND PLACED IN GROUND COORDINATES BY UTILIZING THE AVERAGE OF THE PUBLISHED GRID FACTORS FROM THE SUBJECT MONUMENTS.



CERTIFICATION:

I hereby certify that this plat is a true and correct representation of a survey performed under my responsible direction and supervision and is correct to the best of my knowledge.

[Signature]
 REGISTERED SURVEYOR NO. 7799

April 15, 2015
 DATE

