

NO.	DATE	DESCRIPTION
1	5/18/2004	PRELIMINARY
2	5/18/2004	REVISED
3	5/18/2004	REVISED
4	5/18/2004	REVISED
5	5/18/2004	REVISED
6	5/18/2004	REVISED
7	5/18/2004	REVISED
8	5/18/2004	REVISED
9	5/18/2004	REVISED
10	5/18/2004	REVISED
11	5/18/2004	REVISED
12	5/18/2004	REVISED



RESERVE "A":
 1. 10' WIDE STRIP
 2. 10' WIDE STRIP
 3. 10' WIDE STRIP
 4. 10' WIDE STRIP
 5. 10' WIDE STRIP
 6. 10' WIDE STRIP
 7. 10' WIDE STRIP
 8. 10' WIDE STRIP
 9. 10' WIDE STRIP
 10. 10' WIDE STRIP
 11. 10' WIDE STRIP
 12. 10' WIDE STRIP

HARRISON PARK

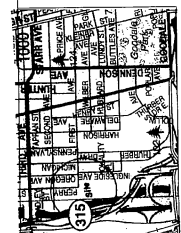
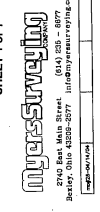
PRELIMINARY PLAT FOR LOTS 1 TO 12, INCLUSIVE, RESERVES A, B, C AND D, DEDICATION OF HARRISON PARK PLACE, PERRY STREET, WEST FIRST AVENUE, QUALITY PLACE, AND FIVE TWENTY FOOT ALLEYS, AND VACATION OF A THIRTY FOOT ALLEY.

Donald Plank
 Donald Plank, Attorney for Applicant

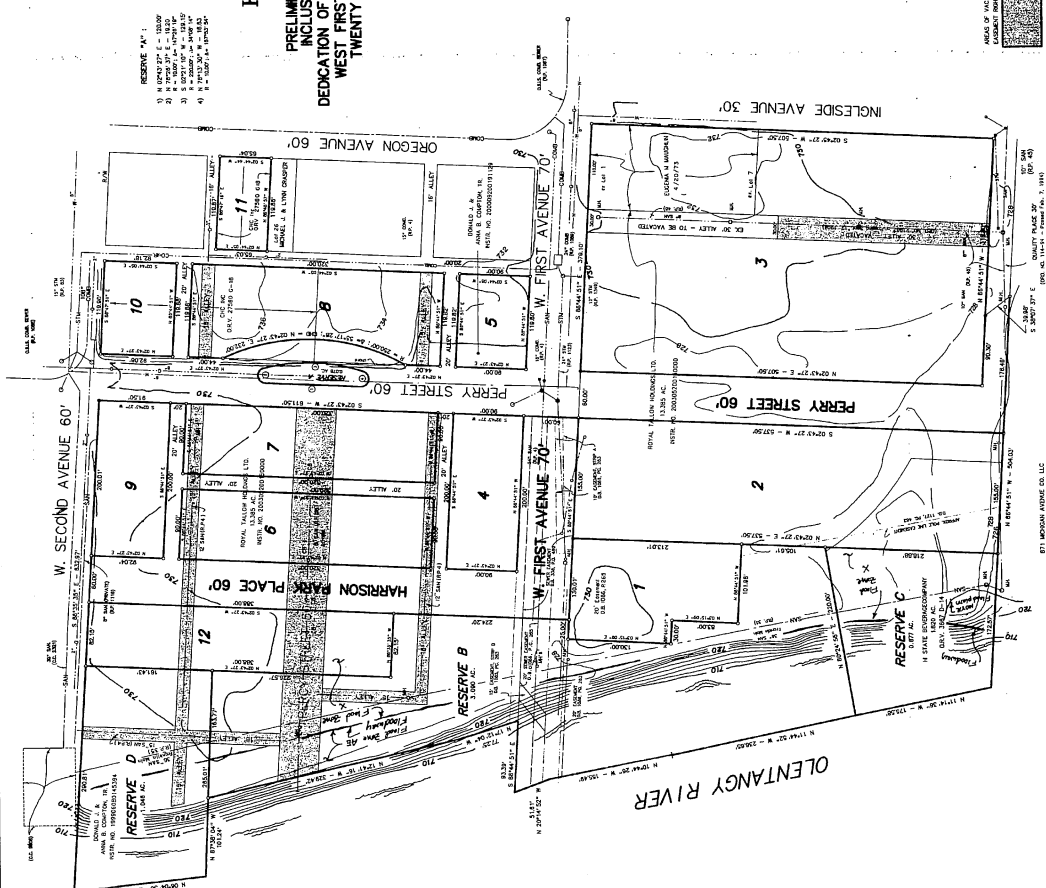
This "Harrison Park" plat is referenced in CV04006 in a prior required street and alley dedication on this plat shall be dedicated for public use. Model home construction may be started prior to dedication of the street and/or alley, as appropriate.

CV04-006

SHEET 1 of 1



OLENTANGY RIVER



- NOTES:
- NOTE "A": An easement for the utility lines shown on the plat is shown in the vicinity of the Oleontangy River. The utility lines are shown in the vicinity of the Oleontangy River. The utility lines are shown in the vicinity of the Oleontangy River.
 - NOTE "B": All of the lots shown on the plat are shown as shown on the plat. The lots are shown as shown on the plat. The lots are shown as shown on the plat.
 - NOTE "C": All existing easements and other interests in the lots shown on the plat are shown as shown on the plat. The easements and other interests are shown as shown on the plat.
 - NOTE "D": The plat is shown as shown on the plat. The plat is shown as shown on the plat. The plat is shown as shown on the plat.
 - NOTE "E": The plat is shown as shown on the plat. The plat is shown as shown on the plat. The plat is shown as shown on the plat.
 - NOTE "F": The plat is shown as shown on the plat. The plat is shown as shown on the plat. The plat is shown as shown on the plat.
 - NOTE "G": The plat is shown as shown on the plat. The plat is shown as shown on the plat. The plat is shown as shown on the plat.
 - NOTE "H": The plat is shown as shown on the plat. The plat is shown as shown on the plat. The plat is shown as shown on the plat.
 - NOTE "I": The plat is shown as shown on the plat. The plat is shown as shown on the plat. The plat is shown as shown on the plat.
 - NOTE "J": The plat is shown as shown on the plat. The plat is shown as shown on the plat. The plat is shown as shown on the plat.
 - NOTE "K": The plat is shown as shown on the plat. The plat is shown as shown on the plat. The plat is shown as shown on the plat.
 - NOTE "L": The plat is shown as shown on the plat. The plat is shown as shown on the plat. The plat is shown as shown on the plat.
 - NOTE "M": The plat is shown as shown on the plat. The plat is shown as shown on the plat. The plat is shown as shown on the plat.
 - NOTE "N": The plat is shown as shown on the plat. The plat is shown as shown on the plat. The plat is shown as shown on the plat.
 - NOTE "O": The plat is shown as shown on the plat. The plat is shown as shown on the plat. The plat is shown as shown on the plat.
 - NOTE "P": The plat is shown as shown on the plat. The plat is shown as shown on the plat. The plat is shown as shown on the plat.
 - NOTE "Q": The plat is shown as shown on the plat. The plat is shown as shown on the plat. The plat is shown as shown on the plat.
 - NOTE "R": The plat is shown as shown on the plat. The plat is shown as shown on the plat. The plat is shown as shown on the plat.
 - NOTE "S": The plat is shown as shown on the plat. The plat is shown as shown on the plat. The plat is shown as shown on the plat.
 - NOTE "T": The plat is shown as shown on the plat. The plat is shown as shown on the plat. The plat is shown as shown on the plat.
 - NOTE "U": The plat is shown as shown on the plat. The plat is shown as shown on the plat. The plat is shown as shown on the plat.
 - NOTE "V": The plat is shown as shown on the plat. The plat is shown as shown on the plat. The plat is shown as shown on the plat.
 - NOTE "W": The plat is shown as shown on the plat. The plat is shown as shown on the plat. The plat is shown as shown on the plat.
 - NOTE "X": The plat is shown as shown on the plat. The plat is shown as shown on the plat. The plat is shown as shown on the plat.
 - NOTE "Y": The plat is shown as shown on the plat. The plat is shown as shown on the plat. The plat is shown as shown on the plat.
 - NOTE "Z": The plat is shown as shown on the plat. The plat is shown as shown on the plat. The plat is shown as shown on the plat.

MEASUREMENTS OF ALL DISTANCES SHOWN ON THIS PLAT ARE TO BE MADE BY THE PLAT GRANTEE. THE GRANTEE SHALL BE RESPONSIBLE FOR THE ACCURACY OF THE MEASUREMENTS. THE GRANTEE SHALL BE RESPONSIBLE FOR THE ACCURACY OF THE MEASUREMENTS.

871 WOODLAND AVENUE CO. LLC
 7000 S.W. 11TH AVENUE, SUITE 1, 98040