

Vicinity Map

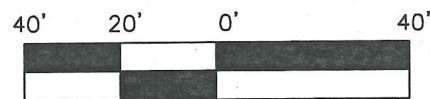
PROPOSED ANNEXATION OF ±0.5 ACRES
FROM: Sharon Township
TO: City of Columbus

ANNEXATION
 PLAT & DESCRIPTION
 ACCEPTABLE
 CORNELL R. ROBERTSON, P.E., P.S.
 FRANKLIN COUNTY ENGINEER

By *JRH* Date 8/26/19

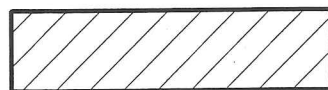
Being ±0.5 Acres, Situated in the State of Ohio,
 County of Franklin, Township of Sharon, in Farm Lot 56,
 Quarter Township 2, Township 2, Range 18, United
 States Military Lands.

Contiguity Percentage: 71%



Scale: 1" = 40'
 August 15, 2019

Area to Be Annexed:



Existing City of Columbus Corp. Line

Proposed City of Columbus Corp. Line

MyersSurveying
 COMPANY

2740 E. Main St., Bexley, Ohio 43209-2577
 (614)235-8677 ~ (614)235-4559 fax
 info@myerssurveying.com

m.o.# 3-8/01/2019 X - T -

OAK STREET 40'
 Ded. P.B. 1, Pg. 401 ± 125.00'
 Existing City of Columbus Corporation Line
 Case# 5-02, Ord. # 1078-02
 I.N. 200211140289386

Worthington Office Park Condominium
 Condo Plat Book 163, Page 43
 I.N. 200603070043141

Existing City of Columbus Corporation Line
 Case# 57-02, Ord. # 0659-03
 I.N. 200306120176153

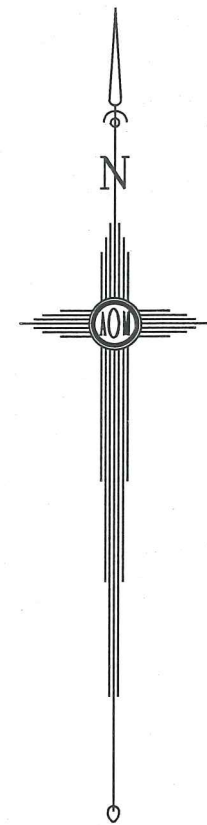
Worthington Office Park Condominium
 Condo Plat Book 163, Page 43
 I.N. 200603070043141



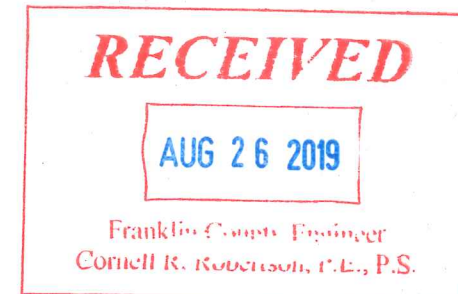
Paul T. Dinan

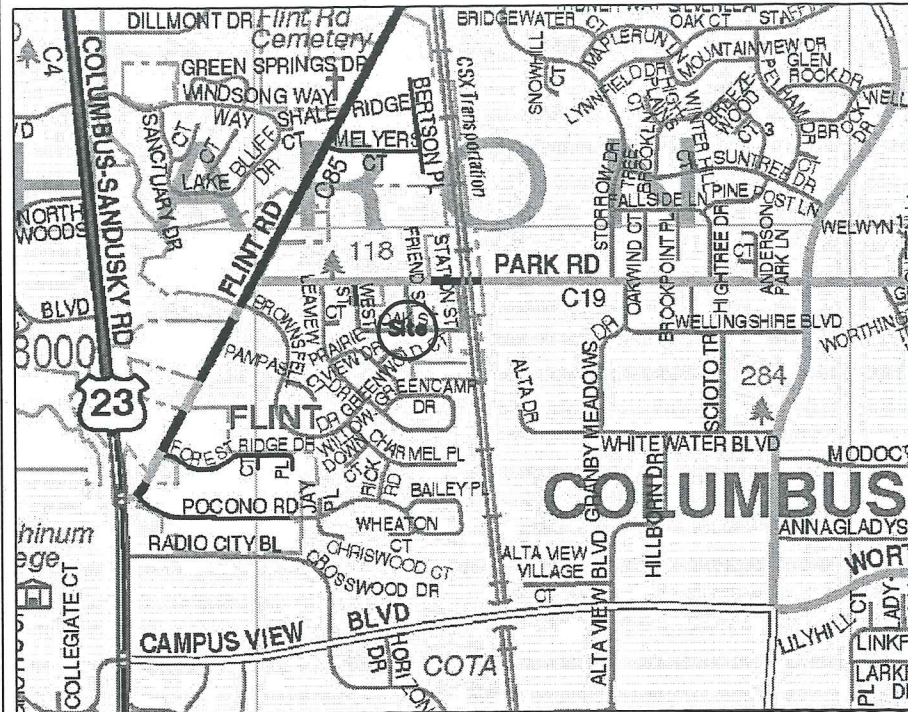
8-15-19

BY: Paul T. Dinan, Professional Surveyor No. 7312 Date



Norfolk and Western Railway Co.
 Deed Book 2599, Page 623
 PID: 250-000109





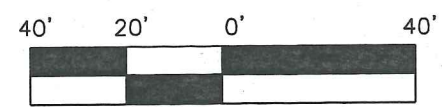
Vicinity Map

PROPOSED ANNEXATION OF ±0.5 ACRES
 FROM: Sharon Township
 TO: City of Columbus

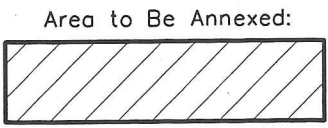
ANNEXATION
 PLAT & DESCRIPTION
 ACCEPTABLE
 CORNELL R. ROBERTSON, P.E., P.S.
 FRANKLIN COUNTY ENGINEER
 By: *JH* Date: 8/26/19

Being ±0.5 Acres, Situated in the State of Ohio,
 County of Franklin, Township of Sharon, in Farm Lot 56,
 Quarter Township 2, Township 2, Range 18, United
 States Military Lands.

Contiguity Percentage: 71%



Scale: 1" = 40'
 August 15, 2019



Existing City of Columbus Corp. Line
 Proposed City of Columbus Corp. Line

MyersSurveying COMPANY
 2740 E. Main St., Bexley, Ohio 43209-2577
 (614)235-8677 ~ (614)235-4559 fax
 info@myerssurveying.com

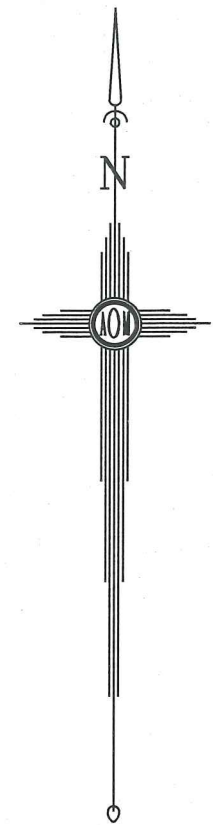
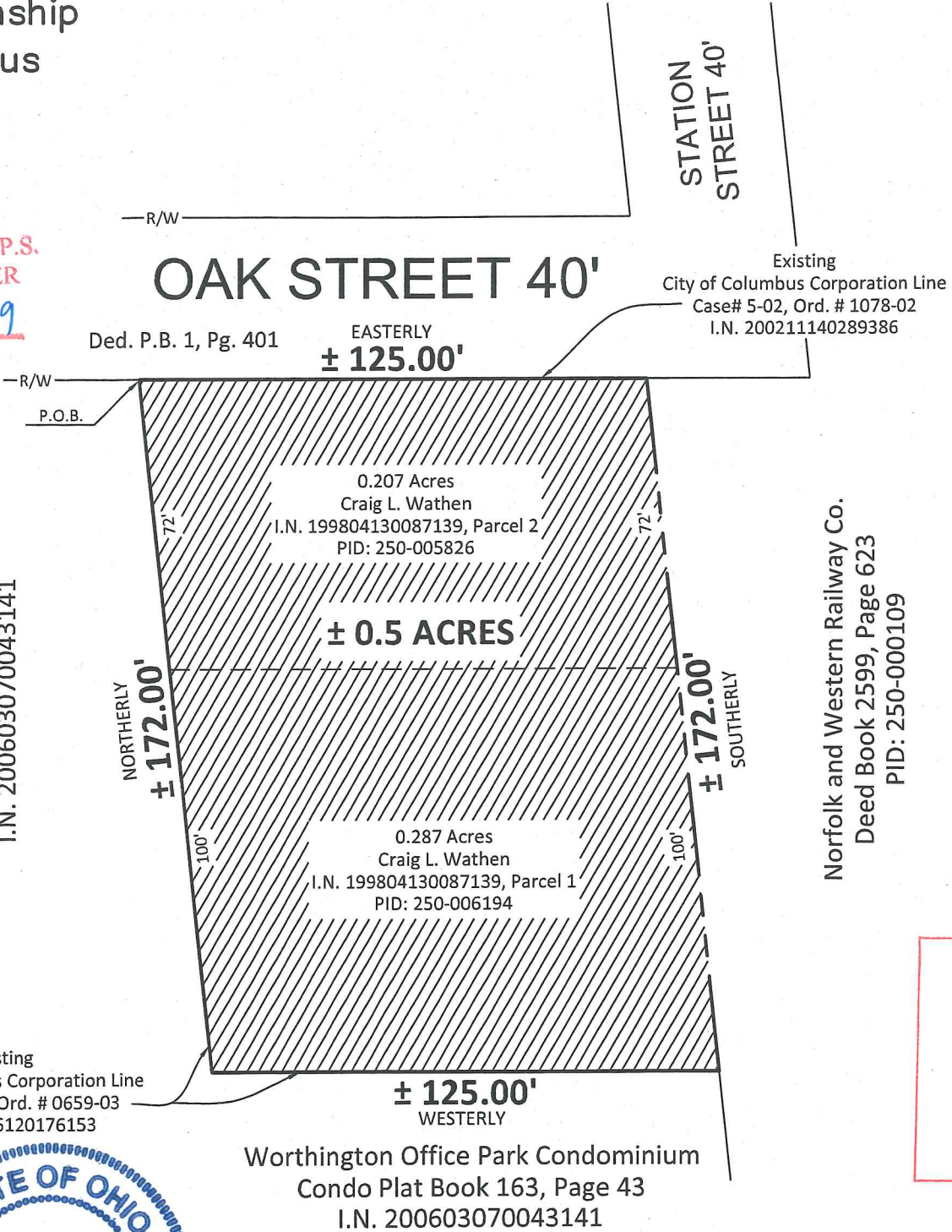
m.o.# 3-8/01/2019 X - T -

Worthington Office Park Condominium
 Condo Plat Book 163, Page 43
 I.N. 200603070043141

Existing
 City of Columbus Corporation Line
 Case# 57-02, Ord. # 0659-03
 I.N. 200306120176153



Paul T. Dinan 8-15-19
 BY: Paul T. Dinan, Professional Surveyor No. 7312 Date



Norfolk and Western Railway Co.
 Deed Book 2599, Page 623
 PID: 250-000109

