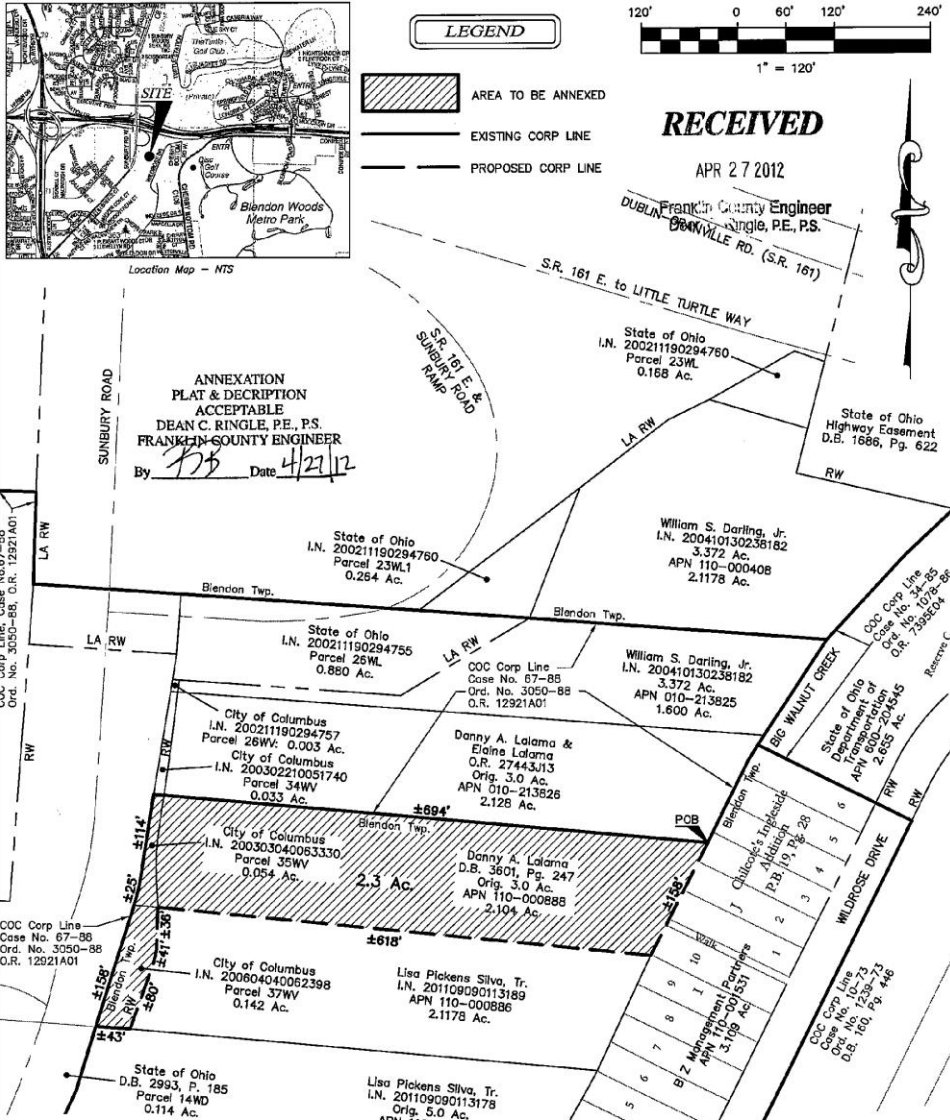


ANNEXATION AN12-009
± 2.3 Acres in Blendon Township
Danny A. Lalama

2.3 ACRE ANNEXATION TO THE CITY OF COLUMBUS FROM BLENDON TOWNSHIP
EXPEDITED TYPE II ANNEXATION UNDER ORC §709.021 AND §709.023
SITUATED IN THE STATE OF OHIO, COUNTY OF FRANKLIN, TOWNSHIP OF BLENDON,
QUARTER TOWNSHIP 4, TOWNSHIP 2, RANGE 17,
UNITED STATES MILITARY DISTRICT



Length of Contiguity: ±991 feet
Total Length of Perimeter: ±1957 feet
Percentage of Contiguity: ±50%

No islands of township property are created by this annexation.

04/27/2012
John C. Dodgion, P.S. 8069
Advanced Civil Design, Inc
422 Beecher Road
Gahanna, OH 43230
Phone 614-428-7750

Job No.: 12-0047-128
Date: 04/17/2012

Z:\12-0047-128\dwg\0047-128 Lalama annex.dwg Layout1 Apr 27, 2012 - 9:24:00am Jcodgion