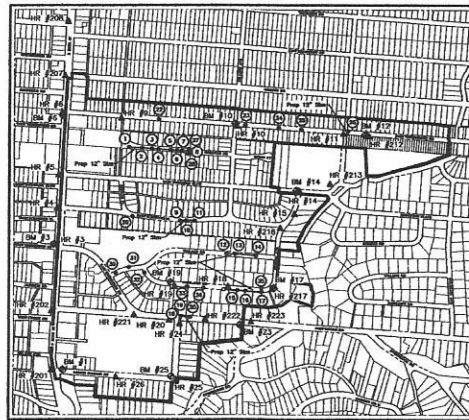


# CITY OF COLUMBUS DIVISION OF SEWERAGE AND DRAINAGE WEISHEIMER-INDIAN SPRINGS INTEGRATED SOLUTIONS CIP # 650870-100002



**BENCH MARKS**  
The vertical datum is based on the elevations established by the Franklin County Engineering Department, at Columbus, Ohio, being 845.026 feet to elevation, and at Columbus, Ohio, being 845.026 feet to elevation. The vertical datum is based on the elevations established by the Franklin County Engineering Department, at Columbus, Ohio, being 845.026 feet to elevation, and at Columbus, Ohio, being 845.026 feet to elevation.

SOURCE	BM	ELEVATION	DESCRIPTION
BM #1	739.23		Chiselled spike in the southeast corner of a light pole located 50 feet east of the intersection of High Street and Indian Springs Drive and being on the north side of Indian Springs Drive.
BM #3	805.23		Chiselled square on the southeast corner of a concrete base of a traffic control box located at the northeast corner of the intersection of High Street and Henderson Road.
BM #6	812.72		Chiselled square on the southeast corner of a concrete base of a light pole located at the southeast corner of the intersection of High Street and Washburn Road.
BM #10	835.43		Chiselled "X" on the north rim of a sanitary manhole located in the intersection of Sellers Avenue and Washburn Road.
BM #12	845.00		Chiselled square on the northeast corner of a concrete base of a metal overhead light pole located 150 feet east of the intersection of Washburn Road and Sharon Avenue.
BM #14	841.20		Chiselled "X" on the south curb of a fire hydrant located at the northeast corner of the intersection of Dominion Boulevard and Indian Avenue.
BM #17	833.33		Chiselled "X" on the north rim of a sanitary manhole located in the paved drive way of residence # 291 Falcoun Drive.
BM #19	814.52		Chiselled "X" on the east bank of a fire hydrant located at the northeast corner of the intersection of Foster Street and Falcoun Drive.
BM #23	829.53		Chiselled "X" on the north curb of a fire hydrant located in front of residence # 249 East Cooke Road.
BM #25	829.33		Chiselled spike in the southeast corner of a utility pole located at the northeast corner of the intersection of Indian Springs Drive and Foster Street.

**HORIZONTAL REFERENCE POINTS**  
Coordinates are based on the Ohio State Plane Coordinate System, South Zone, NAD 83 (1983). Said coordinates originate from a point known as the 544 (reference) to said coordinate system by GPS measurements of Franklin County Engineering Department measurements, FIDG000001 and CR600000001. The grid is based on north-south factor (1.2000310797203) as applied at the location of heading 147163252 and bearing 182574250.

POINT #	DESCRIPTION	NORTHING	EASTING	ELEVATION
HR #3	1/2" IPS w/cap	747544.4728	1822928.1135	826.36
HR #4	IPS w/cap	748031.3261	1822876.7515	826.76
HR #5	IPS w/cap	748338.8937	1822893.3874	811.10
HR #6	1/2" EGS w/cap	748029.8688	1822925.9161	813.17
HR #9	IPS w/cap	748989.4032	1823080.2805	815.98
HR #10	IPS w/cap	748910.2097	1823079.8105	825.92
HR #11	IPS w/cap	749028.6234	1823099.4531	842.28
HR #14	IPS w/cap	748309.9740	1823462.1431	836.64
HR #15	IPS w/cap	747966.8340	1823400.8030	839.72
HR #18	IPS w/cap	747188.4210	1824794.9763	829.05
HR #19	IPS w/cap	747195.3981	1824132.5099	812.59
HR #20	IPS w/cap	748433.3688	1824077.6211	828.94
HR #24	IPS w/cap	747979.4518	1824158.3680	811.78
HR #25	IPS w/cap	746106.4105	1824153.8033	828.58
HR #26	IPS w/cap	746227.4445	1823513.2136	794.51
HR #28	IPS w/cap	746306.5114	1822821.8189	795.18
HR #29	IPS w/cap	746938.5760	1822818.2700	792.24
HR #297	IPS w/cap	749454.4189	1822854.3463	813.51
HR #206	MAGE w/liner	750040.8970	1822885.4674	814.29
HR #212	IPS w/cap	748902.4789	1823033.5826	846.30
HR #213	IPS w/cap	748287.5135	1822987.7005	840.89
HR #216	IPS w/cap	747517.8187	1823000.8053	835.18
HR #217	IPS w/cap	747165.0062	1823176.2122	833.13
HR #221	MAGE w/liner	746890.8760	1823701.8307	801.87
HR #222	IPS w/cap	748946.9876	1824464.7953	818.22
HR #223	IPS w/cap	746918.0193	1824694.5092	829.16



**REVISIONS**

NO.	DATE	DESCRIPTION
11		Sheet V2 width was revised from 5' to 3.5' Sheets 10, 23, 36, & 45. Worksheet quantities added to Sheet 48.

**PLAN PREPARED BY:**  
MHT  
Municipal Engineering & Planning  
1222 N. High Street, Columbus, OH 43260  
614.462.1234  
www.mht.com

**APPROVALS:**  
[Signatures and stamps of project team members]

**SITE DATA TABLE**

Site Total:	176.66 Ac
Disturbed Area:	0.40 Ac
Pre-Developed Impervious:	0.14 Ac
Post-Developed Impervious:	0.13 Ac

**100 YEAR DETENTION TABLE**

LOCATION	VOLUME PROVIDED (ACFT)	VOLUME USED (ACFT)	REMARKS
Total Site	0.0358	0.0358	*

\*Storm Water Management Facilities shall be owned and maintained by the City of Columbus Public Utilities/DOSS

**PROJECT TITLE:**  
WEISHEIMER-INDIAN SPRINGS  
INTEGRATED SOLUTIONS  
CIP # 650870-100002

**CITY OF COLUMBUS, OHIO  
DEPARTMENT OF PUBLIC UTILITIES  
DIVISION OF SEWERAGE AND DRAINAGE**

**SCALE:** As Shown  
**SHEET:** 01 / 52  
**CONTRACT NUMBER:** CC-17116  
**ISSUE DATE:**

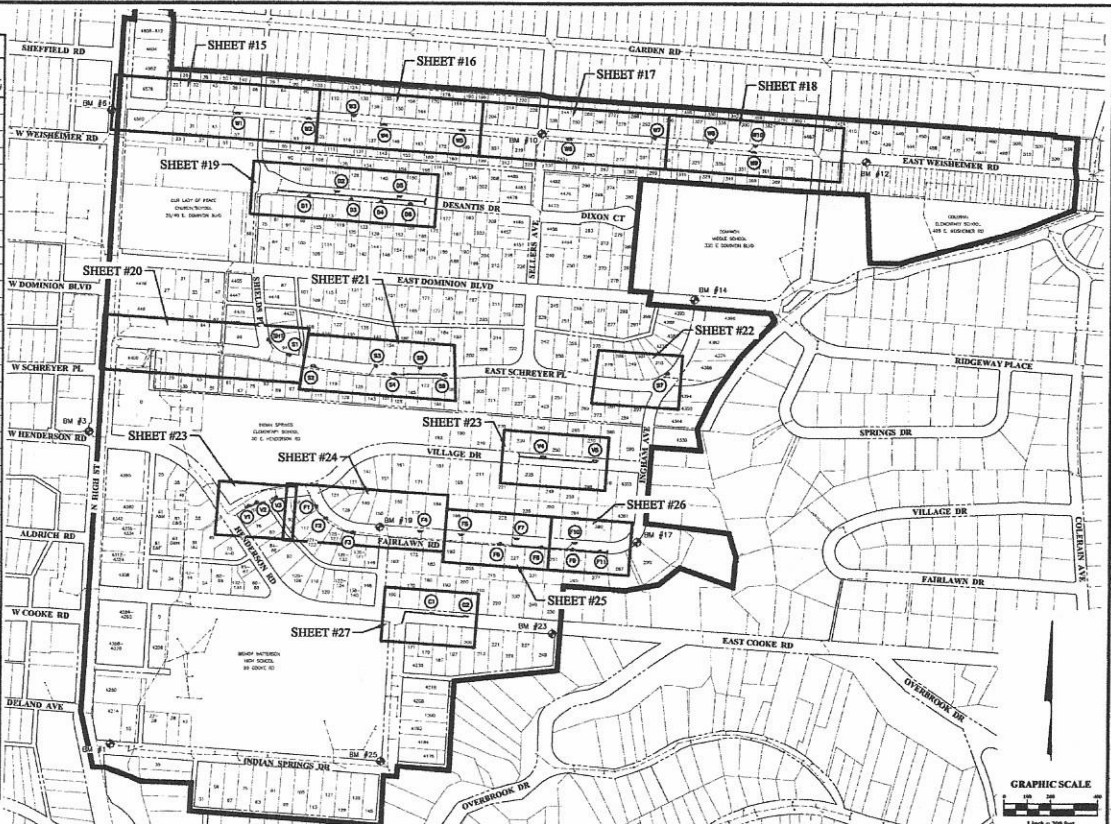
**SHEET INDEX**

TITLE SHEET	01
PROJECT SUMMARY	02
ESTIMATE OF QUANTITIES	03-06
GENERAL NOTES & DETAILS	07-08
POST-CONSTRUCTION STORMWATER CONTROL FACILITIES & LEGEND	09
STORM SEWER DATA TABLES	10
BIORETENTION BASIN TYPICAL DETAILS	11-14
PLAN & PROFILES	15-27
STORM SEWER PROFILES	28-29
BIORETENTION BASIN PLAN VIEWS	30-40
PLANTING DETAILS	41
WATER WORKS	42-47
MAINTENANCE OF TRAFFIC NOTES & DETAILS	49-51
STORM WATER POLLUTION PREVENTION PLAN	52

**STANDARD CONSTRUCTION DRAWINGS**  
The Standard Drawings listed on these plans shall be considered a part thereof.  
City of Columbus

AA-S102	AA-S145	L-E311	1510
AA-S106	AA-S148	L-E312	1540
AA-S107	AA-S150	L-E37A	1520
AA-S108	AA-S151	L-E37C	3000
AA-S112	AA-S161	L-7102C	2010
AA-S117	AA-S174	L-7401	2020
AA-S119	AA-S176	L-7603	2160
AA-S125A	L-1001	L-8002	2201
AA-S128	L-E308	L-9001	2206
AA-S135A	L-E308A	1441	2300
AA-S141	L-E310	1500	55-1100

BIORETENTION BASIN INFORMATION & LOCATION TABLE				
BASIN NO.	ADDRESS OF BASIN	ROAD STATION	PLAN & PROFILE SHEET #	PLANT DETAIL SHEET #
W1	57 EAST WEISHEIMER ROAD	0+06.26 WEISHEIMER	15	30 42
W2	89 EAST WEISHEIMER ROAD	0+11.49 WEISHEIMER	15	30 42
W3	124 EAST WEISHEIMER ROAD	10+04.10 WEISHEIMER	19	30 42
W4	143 EAST WEISHEIMER ROAD	11+35.57 WEISHEIMER	16	30 42
W5	183 & 188 EAST WEISHEIMER ROAD	14+80.87 WEISHEIMER	18	31 42
W6	243 & 251 EAST WEISHEIMER ROAD	19+30.58 WEISHEIMER	17	31 42
W7	292 & 308 EAST WEISHEIMER ROAD	22+98.28 WEISHEIMER	17	31 42
W8	330 EAST WEISHEIMER ROAD	25+37.72 WEISHEIMER	18	31 42
W9	330 EAST WEISHEIMER ROAD	27+23.03 WEISHEIMER	18	32 43
W10	338 EAST WEISHEIMER ROAD	27+27.88 WEISHEIMER	18	32 43
D1	90 DESANTS DRIVE	5+02.19 DESANTS	19	32 43
D2	114 & 120 DESANTS DRIVE	6+70.56 DESANTS	19	32 43
D3	125 DESANTS DRIVE	7+34.85 DESANTS	19	33 43
D4	139 DESANTS DRIVE	8+63.18 DESANTS	19	33 43
D5	154 DESANTS DRIVE	9+38.38 DESANTS	19	33 43
D6	159 DESANTS DRIVE	8+89.08 DESANTS	19	33 43
SH1	94 EAST SCHREYER PLACE	3+10.63 SCHREYER	20	34 44
S1	94 EAST SCHREYER PLACE	7+64.32 SCHREYER	20	34 44
S2	105 & 111 EAST SCHREYER PLACE	8+82.82 SCHREYER	21	34 44
S3	144 EAST SCHREYER PLACE	11+80.22 SCHREYER	21	34 44
S4	151 & 159 EAST SCHREYER PLACE	12+38.89 SCHREYER	21	35 44
S5	168 EAST SCHREYER PLACE	13+51.43 SCHREYER	21	35 44
S6	181 & 189 EAST SCHREYER PLACE	14+55.03 SCHREYER	21	35 44
S7	310 EAST SCHREYER PLACE	24+34.56 SCHREYER	22	35 45
V1	70 EAST HENDERSON ROAD	0+48.07 VILLAGE	23	38 45
V2	70 EAST HENDERSON ROAD	1+35.87 VILLAGE	23	38 45
V3	93 VILLAGE DRIVE	2+13.37 VILLAGE	23	36 45
V4	240 VILLAGE DRIVE	14+05.32 VILLAGE	23	36 45
V5	270 VILLAGE DRIVE	16+47.42 VILLAGE	23	37 45
F1	105 VILLAGE DRIVE	0+73.50 FAIRLAWN	24	37 45
F2	117 & 121-123 FAIRLAWN DRIVE	1+37.00 FAIRLAWN	24	37 46
F3	131-133 FAIRLAWN DRIVE	2+58.00 FAIRLAWN	24	37 46
F4	172 FAIRLAWN DRIVE	5+42.56 FAIRLAWN	24	38 48
F5	188 FAIRLAWN DRIVE	7+17.84 FAIRLAWN	25	38 48
F6	215 FAIRLAWN DRIVE	8+55.82 FAIRLAWN	25	38 48
F7	235 FAIRLAWN DRIVE	9+56.61 FAIRLAWN	25	38 48
F8	239 FAIRLAWN DRIVE	10+55.99 FAIRLAWN	25	39 48
F9	253 FAIRLAWN DRIVE	11+58.84 FAIRLAWN	26	39 47
F10	254 FAIRLAWN DRIVE	12+05.40 FAIRLAWN	26	39 48
F11	277 FAIRLAWN DRIVE	13+17.23 FAIRLAWN	26	39 47
C1	180 EAST COOKE ROAD	14+48.85 COOKE	27	40 47
C2	200 EAST COOKE ROAD	16+03.88 COOKE	27	40 47



EASEMENT REFERENCE			
CITY JOB NO.	CONTRACT NUMBER	DATE	CLASSIFICATION

REVISIONS		
NO.	DESCRIPTION	DATE

PLAN PREPARED BY:

**EMHT**  
 Environmental Management & Technology, Inc.  
 10000 North State Road, Columbus, OH 43240  
 Phone: 614.881.1111 Fax: 614.881.1112  
 www.emht.com

**PROJECT SUMMARY**


PROJECT TITLE:		CITY OF COLUMBUS, OHIO	
<b>WEISHEIMER-INDIAN SPRINGS INTEGRATED SOLUTIONS</b>		<b>DEPARTMENT OF PUBLIC UTILITIES</b>	
<b>CIP # 650870-100002</b>		<b>DIVISION OF SEWERAGE AND DRAINAGE</b>	
DESIGNER: EMHT		DATE: 11-20-07	
CONTRACTOR: [ ]		SHEET: 02 / 52	
APPROVED: [ ]	COMPLETED: [ ]	PROJECT NUMBER: CC-17116	
DATE: [ ]	BY: [ ]	ISSUED FOR: [ ]	
SCALE: [ ]	BY: [ ]	DATE: [ ]	



BASIN SUMMARY (1 OF 2)

W1	W2	W3	W4	W5	W6	W7	W8	W9	W10	D1	D2	D3	D4	D5	D6	SH1	S1	S2	S3	S4	Item No.	Description	Sheet 3 Total	Unit
24	24		24	25	25			25		25			25					25		24	202	Curb Removed	49	FL
12	12		12	14	14			14		14			14					14		12	202	Curb & Gutter Removed	197	FL
2	2	1	2	2	2	1	1	2	1	1	2	1	1	2	1	1	1	2	1	2	204	Paintment Removed	132	S.V.
																					003	3" Conduit, Type "E" (Downspout Connector)	31	S.V.
																					003	Combination Curb and Gutter, As Per Plan (Basin Type D)	58	FL
																					009	Combination Curb and Gutter, As Per Plan (Basin Type D&E)	312	FL
30	30		30	32	32		8	8		32	7	9	9	9	9			32		30	009	Curb, Straight 18" (S&D Dwg 2005)	25	FL
19	19		19	21	25			21		21			21					19		19	009	Curb, Straight 18", As Per Plan (Basin Type D&E)	219	FL
2	2		2	2	2			2		2			2					2		2	027	Reboundable Traffic Post	20	Each
10	10	11	10	11	18	7	7	11	8	8	11	8	8	11	11	11	10	18	8	10	SS-1002	Expansion for Green Infrastructure Facilities	213	C.V.
129	128	144	128	143	234	82	82	143	72	108	143	100	100	142	130	144	128	234	80	128	SS-1004	Retention Silt	2744	C.F.
18	18	24	18	20	38	15	15	21	13	18	20	18	18	21	23	22	20	37	15	18	SS-1004	Retention Silt (T-3)	429	C.F.
							8.5	8.5		6.5	9	9	9	9	9	7	7				SS-1004	Steel Edging	87	L.F.
0.25	0.25	0.13	0.25	0.24	0.13	0.13	0.25	0.13	0.13	0.25	0.13	0.13	0.25	0.13	0.13	0.13	0.13	0.2	0.13	0.25	Spec.	Local Washed River Gravel	385	C.V.
2.1	2.1	1.8	2.1	2.4	0.9	1.2	1.2	2.4	0.9	1.4	2.4	1.5	1.2	2.4	1.2	1.8	1.6	2.8	1	2.1	Spec.	No. 57 Aggregate	61.0	C.V.
1.1	1.1	0.9	1.1	1.2	2	0.8	0.8	1.2	0.5	0.7	1.2	0.7	0.7	1.2	0.9	0.9	0.8	2	0.5	1.1	Spec.	No. 8 Aggregate	21.0	C.V.
1	1	1	1	1	1	1	1	1	1	1	1	1	1	1	1	1	1	1	1	1	Spec.	Observation Well	21	Each
																					Spec.	Segmental Retaining Wall	1180	S.F.
																					001	Golden St. John's Wort, #2 Cont.	2	Each
																					001	Little Heavy Dwarf Dandelion, #2 Cont.	0	Each
																					001	Green Mound Alpine Currant, #2 Cont.	0	Each
2	2																				001	Hill Foxtail, Feather Reed Grass, #2 Cont.	11	Each
																					001	Ice Dance Japanese Barley, #2 Cont.	24	Each
																					001	Northern Sea Oats, #2 Cont.	15	Each
																					001	Heavy Metal Dutch Grass, #2 Cont.	9	Each
																					001	Dwarf Fountain Grass, #2 Cont.	23	Each
																					001	Prarie Dropseed, #2 Cont.	31	Each
																					001	Vegetated Street Flag, #2 Cont.	18	Each
																					001	Blue Star Anemone, #2 Cont.	38	Each
																					001	Bulbous Mimosed, #2 Cont.	33	Each
																					001	Purple Crown New England Aster, #2 Cont.	12	Each
																					001	Lady Fern, #2 Cont.	13	Each
																					001	Kim's Kovee High Purple Convolvul, #2 Cont.	47	Each
																					001	Blue Meadow, #2 Cont.	35	Each
																					001	Man Post Cerebrum, #2 Cont.	0	Each
																					001	Happy Autumn Daily, #2 Cont.	26	Each
																					001	Blue Casket Hestia, #2 Cont.	0	Each
																					001	Blue Flag, #2 Cont.	21	Each
																					001	Blazing Star, #2 Cont.	12	Each
																					001	Great Blue Lobelia, #2 Cont.	10	Each
																					001	Black-eyed Susan, #2 Cont.	63	Each
																					001	Ashum Joy Sedum, #2 Cont.	18	Each
																					001	Solar Cascade Goldenrod, #2 Cont.	27	Each


SEE SHEET 5 & 6 FOR ESTIMATE OF QUANTITY TOTALS

<b>ESTIMATE REFERENCE</b> CITY NO. _____ SHEET NO. _____ DATE _____		<b>REVISIONS</b> NO. _____ DESCRIPTION _____ DATE _____		<b>PLAN PREPARED BY:</b>  ESTIMATE OF QUANTITIES		<b>PROJECT TITLE:</b> <b>WEISHEIMER-INDIAN SPRINGS</b> INTEGRATED SOLUTIONS CIP # 650870-100002		<b>CITY OF COLUMBUS, OHIO</b> DEPARTMENT OF PUBLIC UTILITIES DIVISION OF SEWERAGE AND DRAINAGE DRAWING NO. ONLY <b>03 / 52</b>	
<b>APPROVED:</b> _____ DATE _____		<b>APPROVED:</b> _____ DATE _____		<b>APPROVED:</b> _____ DATE _____		<b>APPROVED:</b> _____ DATE _____		<b>APPROVED:</b> _____ DATE _____	

BASIN SUMMARY (2 OF 2)

S6	S8	S7	V1	V2	V3	V4	V5	F1	F2	F3	F4	F5	F6	F7	F8	F9	F10	F11	C1	C2	Item No.	Description	Sheet # Total	Unit	
																						202	Curb Removed	75	FL
																						202	Curb & Gutter Removed	100	FL
																						202	Pavement Removed	85	S.Y.
																						204	Groutable Fabric	28	S.Y.
																						603	3" Corund. Type 'C' (Commercial Coarsest)	12	L.F.
																						609	Combination Curb and Gutter, As Per Plan (Bash Type C)	87	FL
																						609	Combination Curb and Gutter, As Per Plan (Bash Type D&E)	234	FL
																						609	Curb, Straight 18" (3M Dwg 2000)	34	FL
																						609	Curb, Straight 18", As Per Plan (Bash Type D&E)	189	FL
																						627	Reinforced Trench Field	14	Each
																						SS-1002	Excavation for Green Infrastructure Facilities	259	C.Y.
																						SS-1004	Restoration Soil	3420	G.P.
																						SS-1004	Restoration Mulch (T+T)	523	C.F.
																						SS-1004	Steel Grating	176	L.F.
																						Spec.	Least Mixed Size Gravel	3.29	C.Y.
																						Spec.	No. 57 Aggregate	48.5	C.Y.
																						Spec.	No. 8 Aggregate	24.8	C.Y.
																						Spec.	Observation Well	21	Each
																						Spec.	Segmental Retaining Wall	1512	S.F.
																						661	Golden St. John's Wort, #2 Cont.	2	Each
																						661	Little Honey Dewed Sweetgum, #3 Cont.	9	Each
																						661	Green Mound Albino Cornus, #3 Cont.	6	Each
																						661	Yall Frontier Feather Reed Grass, #2 Cont.	5	Each
																						661	Isis Dance Japanese Sedge, #2 Cont.	35	Each
																						661	Northern Saw Oak, #2 Cont.	36	Each
																						661	Heavy Metal Swath Grass, #2 Cont.	18	Each
																						661	Dwarf Fountain Grass, #2 Cont.	45	Each
																						661	Plains Dressed, #2 Cont.	67	Each
																						661	Vastigated Sweet Flag, #2 Cont.	20	Each
																						661	Blue Star Anemone, #2 Cont.	34	Each
																						661	Batfly Anemone, #2 Cont.	33	Each
																						661	Purple Dome New England Aster, #2 Cont.	24	Each
																						661	Lady Fern, #2 Cont.	5	Each
																						661	Kiri's Knee High Purple Coneliner, #2 Cont.	31	Each
																						661	Blue Mistletoe, #2 Cont.	18	Each
																						661	Mane Flat Cockscomb, #2 Cont.	12	Each
																						661	Happy Returns Daylily, #2 Cont.	25	Each
																						661	Blue Cadet Hosta, #2 Cont.	32	Each
																						661	Blue Flag, #2 Cont.	31	Each
																						661	Blacking Star, #2 Cont.	25	Each
																						661	Great Blue Lobelia, #2 Cont.	23	Each
																						661	Black-eyed Susan, #2 Cont.	64	Each
																						661	Aurora Jay Sedum, #2 Cont.	52	Each
																						661	Solar Cascade Goldenrod, #2 Cont.	28	Each

SEE SHEET 6 & 9 FOR ESTIMATE OF QUANTITY TOTALS

<b>EQUIPMENT REFERENCE</b> CITY NO.   VOL.   PAGE   QUANTITY   PRICE		<b>REVISIONS</b> NO.   DESCRIPTION   DATE		<b>PLAN PREPARED BY:</b>  Environmental Management & Technology, Inc. 18800 North Central Expressway, Suite 100 Dallas, Texas 75244		<b>PROJECT TITLE:</b> WEISHEIMER-INDIAN SPRINGS INTEGRATED SOLUTIONS CIP # 650870-100002		<b>CITY OF COLUMBUS, OHIO</b> DEPARTMENT OF PUBLIC UTILITIES DIVISION OF SEWERAGE AND DRAINAGE DESIGN ONLY	
<b>ESTIMATE OF QUANTITIES</b>				CONTRACTOR: _____ SUPERVISOR: _____ APPROVED: _____ DATE: _____		SCALE: _____ SHEET: <b>04 / 52</b> CONTRACT DRAWING NO.: <b>CC-17116</b> DESIGNER: _____			