

ANNEXATION AN15-002
+ 3.682 Acres / Plain Township
Norma F. Connett
(5420 N Hamilton Rd)

ANNEXATION PLAT
FROM PLAIN TWP. TO THE CITY OF COLUMBUS
Q.T.R. 3, TWP. 2, RNG. 16, U.S.M.L.
PLAIN TOWNSHIP, FRANKLIN COUNTY, OHIO

ANNEXATION
 PLAT & DESCRIPTION
 ACCEPTABLE
 DEAN C. RINGLE, P.E., P.S.
 FRANKLIN COUNTY ENGINEER
 By: *RB* Date: 12-12-14

SARA A. RASTEGAR
 INS. 200810030748794
 1.9560 AC.

1.943 AC. (ORIG.)
 PID 220-000173
 D.B. 2614, PG. 167
 O.R. 33176, PG. A09
 NORMA F. CONNETT
 INS. 200306200187917 (T.O.D.)

3.682 AC. TOTAL ANNEX.
 O.R. 6398, PG. A16
 O.R. 33175, PG. J16
 2.000 AC. (ORIG.)
 PID 220-000605
 5420 HAMILTON RD.
 COLUMBUS, OH 43230

WOB PROPERTIES LLC
 INS. 201307100115084
 1.5070 AC.

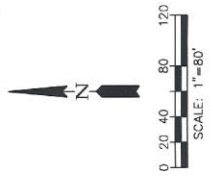
TELHIO CREDIT UNION INC.
 INS. 2004022600041572
 1.027 AC.

ANNEXATION ACERAGE
PID 220-000173: 1.814 AC.
PID 220-000605: 1.868 AC.
TOTAL: 3.682 AC.

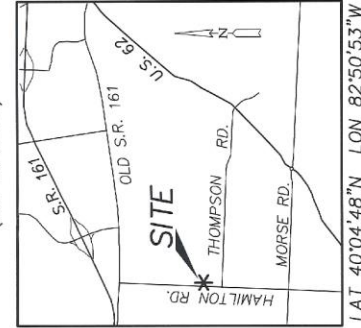
RECEIVED

DEC 12 2014

Franklin County Engineer
 Dean C. Ringle, P.E., P.S.



LOCATION MAP
 (NOT TO SCALE)



LAT 40°04'48"N LON 82°50'53"W

LEGEND

- = EX. CORP. LINE
- - - = PROPOSED CITY OF COLUMBUS CORP. LINE

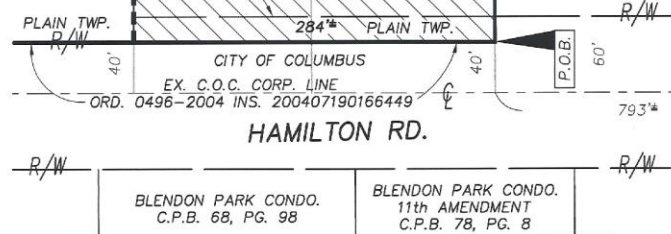
DATE: 12/11/14
 JOB No.: 14-259
 CLIENT: MS. NORMA F. CONNETT



BY: *Michael P. Lomano*
 OHIO PROFESSIONAL SURVEYOR No. 7711

DRAWING NAME: 14259AN.DWG

DRAWING PREPARED BY:
 WESTERVILLE LAND SURVEYING
 90 E. COLLEGE AVE.
 WESTERVILLE, OH 43081
 (614) 899-2209



BLENDON PARK CONDO.
 C.P.B. 68, PG. 98

BLENDON PARK CONDO.
 11th AMENDMENT
 C.P.B. 78, PG. 8