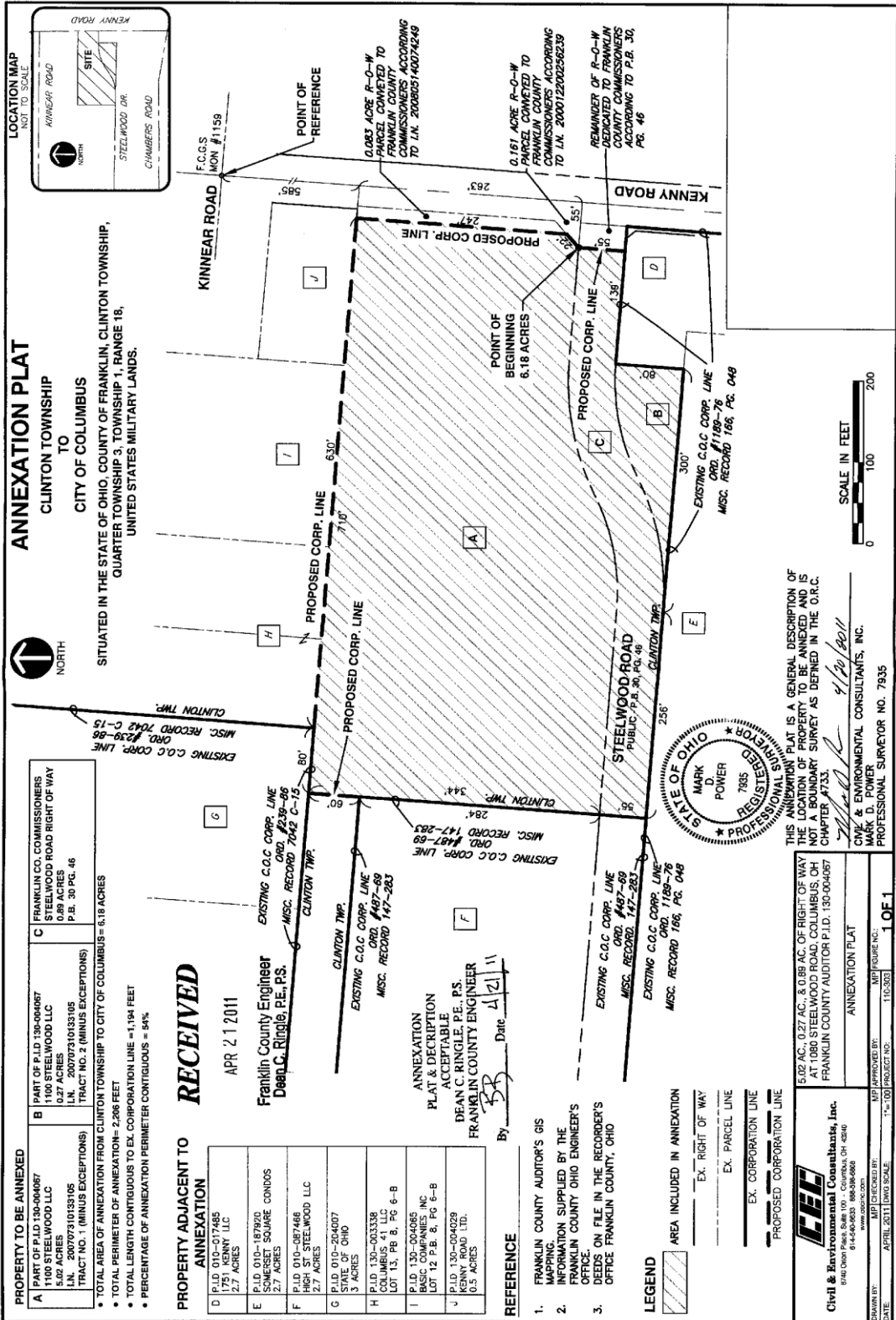


ANNEXATION AN11-005

+ 6.18 Acres in Clinton Township

1100 Steelwood LLC



ANNEXATION PLAT
TO
CLINTON TOWNSHIP
CITY OF COLUMBUS

SITUATED IN THE STATE OF OHIO, COUNTY OF FRANKLIN, CLINTON TOWNSHIP,
QUARTER TOWNSHIP 3, TOWNSHIP 1, RANGE 18,
UNITED STATES MILITARY LANDS.

PROPERTY TO BE ANNEXED

A	PART OF P.L.D. 130-004087 STEELWOOD ROAD LLC 5.02 ACRES L.N. 200707310153195 TRACT NO. 1 (MINUS EXCEPTIONS)
B	PART OF P.L.D. 130-004087 1100 STEELWOOD LLC 0.89 ACRES L.N. 200707310153195 TRACT NO. 2 (MINUS EXCEPTIONS)
C	FRANKLIN CO. COMMISSIONERS STEELWOOD ROAD RIGHT OF WAY 0.89 ACRES P.B. 30 PG. 46

- TOTAL AREA OF ANNEXATION FROM CLINTON TOWNSHIP TO CITY OF COLUMBUS = 6.18 ACRES
- TOTAL PERIMETER OF ANNEXATION = 2,286 FEET
- TOTAL LENGTH CONTIGUOUS TO EX. CORPORATION LINE = 1,194 FEET
- PERCENTAGE OF ANNEXATION PERIMETER CONTIGUOUS = 54%

PROPERTY ADJACENT TO ANNEXATION

D	P.L.D. 010-017485 1151 KENNY LLC 2.7 ACRES
E	P.L.D. 010-187910 SOMERSET SQUARE CONDOS 2.7 ACRES
F	P.L.D. 010-087468 HIGH ST. STEELWOOD LLC 2.7 ACRES
G	P.L.D. 010-204007 STATE OF OHIO 3 ACRES
H	P.L.D. 130-003338 COLUMBUS 41 LLC LOT 13, PG. 8, PG. 6-B
I	P.L.D. 130-004085 BASIC COMPANIES INC LOT 12 P.B. 8, PG. 6-B
J	P.L.D. 130-004029 KENNY ROAD LTD. 0.5 ACRES

RECEIVED
APR 21 2011

Franklin County Engineer
Dean C. Ringle, P.E., P.S.

ANNEXATION
PLAT & DESCRIPTION
ACCEPTABLE
DEAN C. RINGLE, P.E., P.S.
FRANKLIN COUNTY ENGINEER

By: *DR* Date: 4/21/11

REFERENCE

- FRANKLIN COUNTY AUDITOR'S GIS MAPPING.
- FRANKLIN COUNTY OHIO ENGINEER'S OFFICE.
- DEEDS ON FILE IN THE RECORDER'S OFFICE FRANKLIN COUNTY, OHIO

LEGEND

- AREA INCLUDED IN ANNEXATION
- EX. RIGHT OF WAY
- EX. PARCEL LINE
- EX. CORPORATION LINE
- PROPOSED CORPORATION LINE

STATE OF OHIO
MARK D. POWER
7985
PROFESSIONAL SURVEYOR

THIS ANNEXATION PLAT IS A GENERAL DESCRIPTION OF THE LOCATION OF PROPERTY TO BE ANNEXED AND IS NOT A BOUNDARY SURVEY AS DEFINED IN THE O.R.C. CHAPTER 4733.

4/20/2011

CVI & ENVIRONMENTAL CONSULTANTS, INC.
MARK D. POWER
PROFESSIONAL SURVEYOR NO. 7935

ANNEXATION PLAT

5.02 AC., 0.27 AC., & 0.89 AC. OF RIGHT OF WAY
AT 1080 STEELWOOD ROAD, COLUMBUS, OH
FRANKLIN COUNTY AUDITOR P.L.D. 130-004087

PREPARED BY: *DR*
DATE: APRIL 2011 [DRAW SCALE: 1"=100'] PROJECT ID: 110-205

1 OF 1

Civil & Environmental Consultants, Inc.
6740 Ohio Park, Suite 100 • Columbus, OH 43240
614-940-9530 • 600-390-9808
www.civilandenv.com