



Evans, Mechwari, Hambleton & Tilton, Inc.  
 Engineers • Surveyors • Planners • Scientists  
 5800 New Albany Road, Columbus, OH 43054  
 Phone: 614.773.4500 Fax: 614.773.3446  
 emht.com

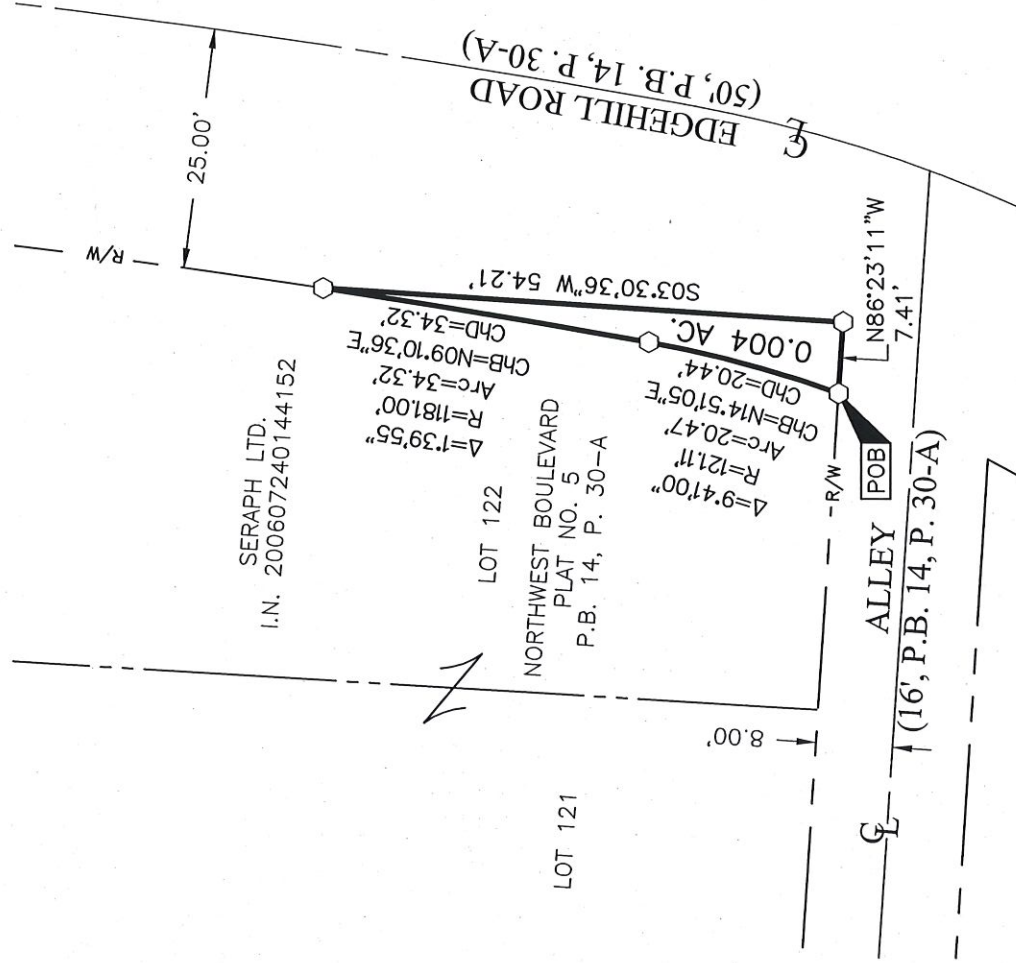
# RIGHT-OF-WAY VACATION

SECTION 6, TOWNSHIP 5, RANGE 22  
 REFUGEE LANDS  
 CITY OF COLUMBUS, COUNTY OF FRANKLIN, STATE OF OHIO

Date: November 1, 2016

Job No: 2013-1505

Scale: 1" = 20'



- = STONE FND.
- = MON. FND.
- = I.P. FND.
- = I.P. SET
- ◆ = MAG. NAIL FND.
- = MAG. NAIL SET
- ▲ = R.R. SPK. FND.
- △ = R.R. SPK. SET
- ◆ = P.K. NAIL FND.

I.P. Set are 13/16" I.D. iron pipes  
 30" long with cap inscribed EMHT INC.

### BASIS OF BEARINGS:

The bearings shown hereon are based on the Ohio State Plane Coordinate System South Zone as per NAD83 (1986 adjustment). Control for the bearings was from coordinates of monuments 5-83 and 4-83, having a bearing of North 00° 22' 10" West, for a portion of the west limited access right-of-way of Olentangy River Road, established by the Franklin County Engineering Department using Global Positioning System procedures and equipment, and noted on Plat Book 118, Page 47.

### SURVEY NOTE:

This survey was prepared using documents of record, prior plats of survey, and observed evidence located by an actual field survey in May 2015.



By John C. Dodgion Date 11/03/2016  
 John C. Dodgion  
 Professional Surveyor No. 8069





Evans, Mechwart, Hambleton & Tilton, Inc.  
 Engineers • Surveyors • Planners • Scientists  
 5500 New Albany Road, Columbus, OH 43054  
 Phone: 614.775.4500 Toll Free: 888.775.5448  
 emht.com

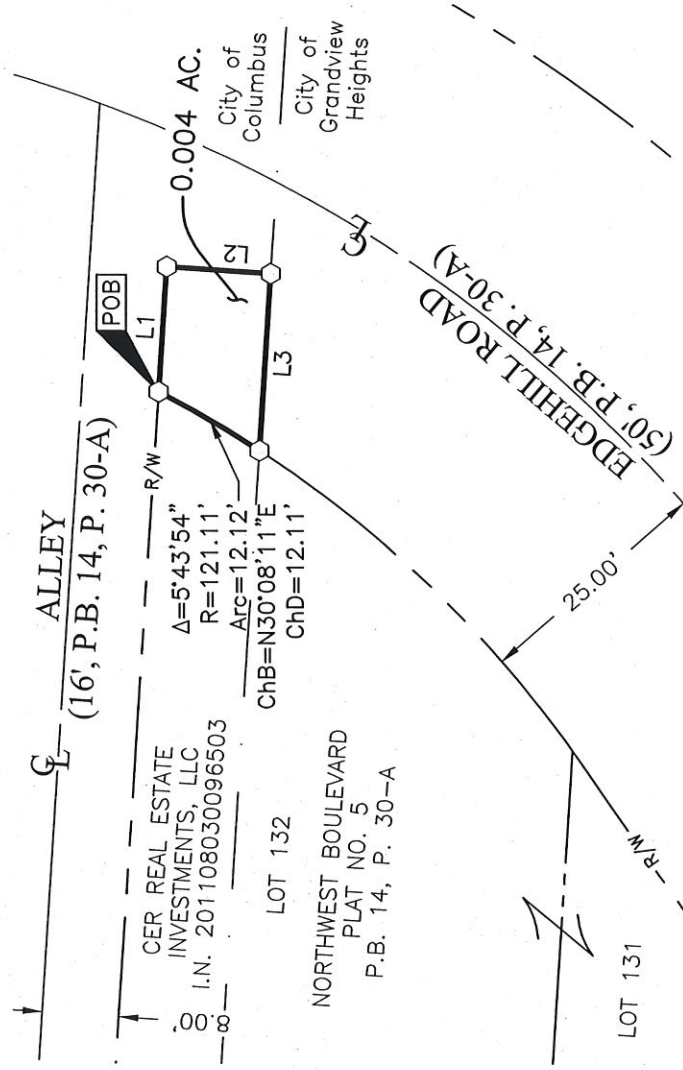
# RIGHT-OF-WAY VACATION

SECTION 6, TOWNSHIP 5, RANGE 22  
 REFUGEE LANDS  
 CITY OF COLUMBUS, COUNTY OF FRANKLIN, STATE OF OHIO

Date: November 1, 2016

Job No: 2013-1505

Scale: 1" = 20'



LINE TABLE		
LINE	BEARING	DISTANCE
L1	S86°23'11"E	13.02'
L2	S03°42'14"W	10.82'
L3	N86°25'59"W	18.41'

- = STONE FND.
- = MON. FND.
- = I.P. FND.
- = I.P. SET
- ◆ = MAG. NAIL FND.
- ◇ = MAG. NAIL SET
- ▲ = R.R. SPK. FND.
- △ = R.R. SPK. SET
- ◆ = P.K. NAIL FND.

I.P. Set are 13/16" I.D. iron pipes  
 30" long with cap inscribed EMHT INC.

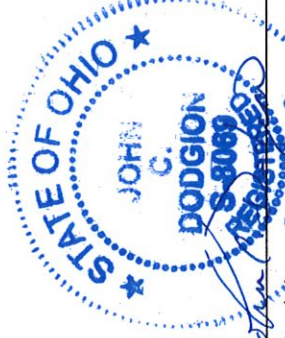


GRAPHIC SCALE (in feet)

**BASIS OF BEARINGS:**  
 The bearings shown hereon are based on the Ohio State Plane Coordinate System South Zone as per NAD83 (1986 adjustment). Control for the bearings was from coordinates of monuments 5-83 and 4-83, having a bearing of North 00° 22' 10" West, for a portion of the west limited access right-of-way of Olentangy River Road, established by the Franklin County Engineering Department using Global Positioning System procedures and equipment, and noted on Plat Book 118, Page 47.

**SURVEY NOTE:**

This survey was prepared using documents of record, prior plats of survey, and observed evidence located by an actual field survey in May 2015.



By John C. Dodgion Date 11/6/2016  
 John C. Dodgion Professional Surveyor No. 8069