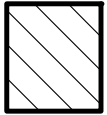


**6.4± ACRE ANNEXATION FROM THE  
TOWNSHIP OF TRURO TO THE CITY OF  
COLUMBUS**

TRURO TOWNSHIP, FRANKLIN COUNTY, OHIO  
HALF SECTION 2, TOWNSHIP 12, RANGE 21, REFUGEE  
LANDS

MAY 31, 2024 SCALE: 1"=100'



AREA TO BE ANNEXED

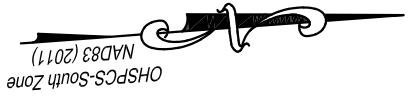


PROPOSED ANNEXATION LINE



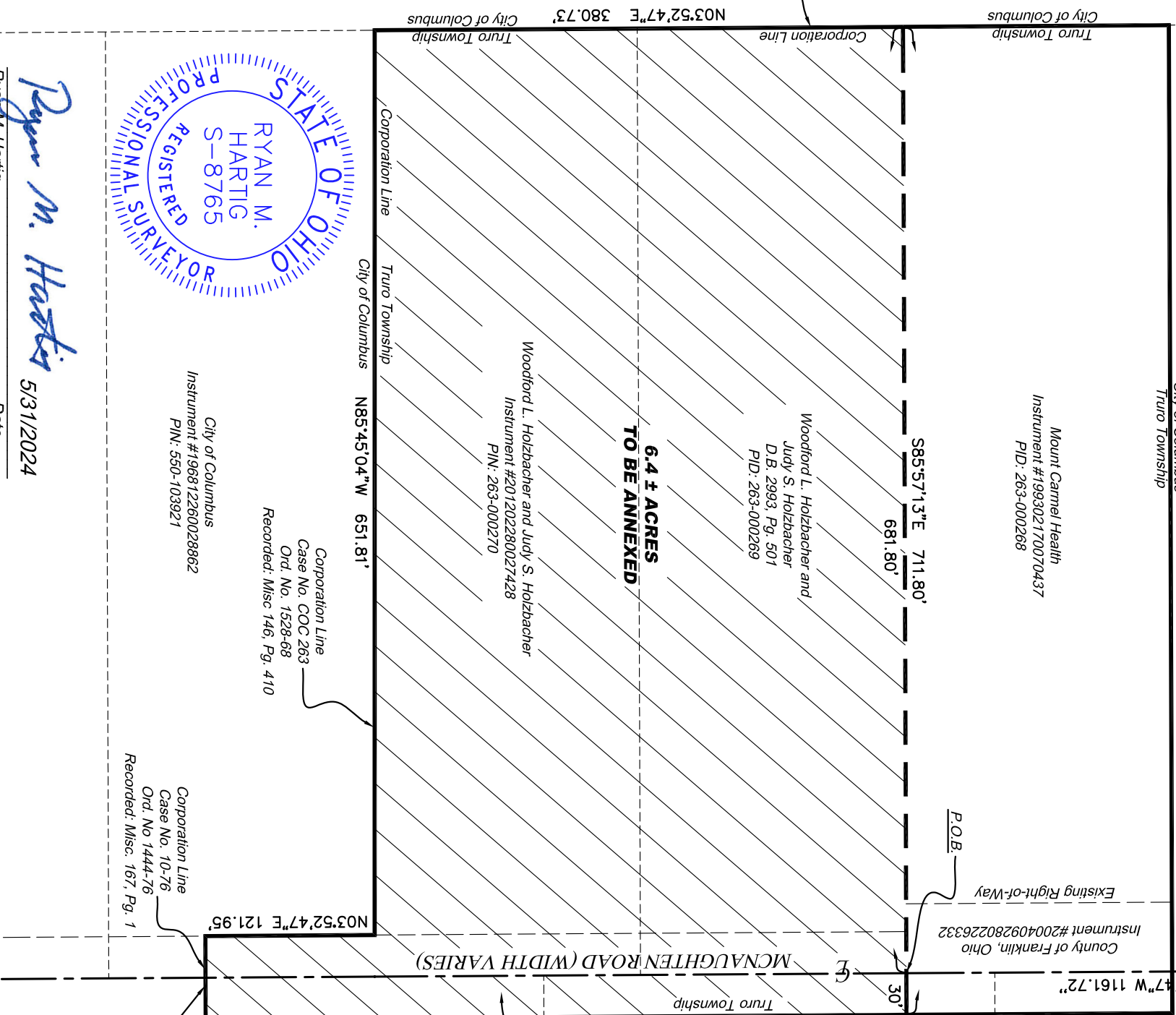
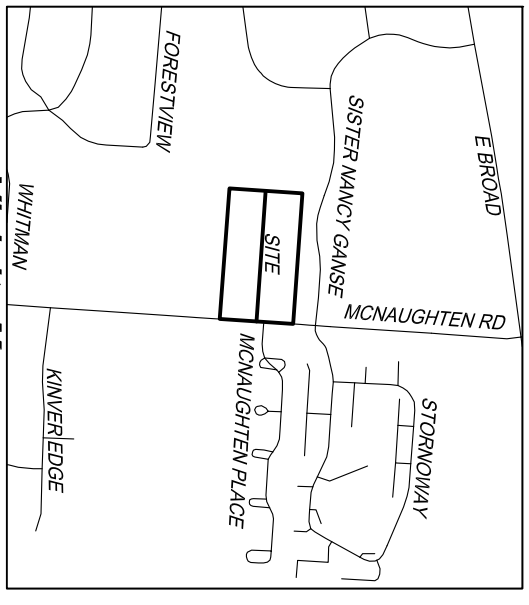
EXISTING CITY OF COLUMBUS CORPORATION LINE

NOTE: Total perimeter of annexation area is 2431 feet out of which 1720 feet is contiguous with the City of Columbus Corporation Line. Contiguity + 70.7%.



Mount Carmel Health  
Instrument #199005310104682  
PIN: 010-217559

Bearings are based on the Ohio State Plane Coordinate System, Ohio South Zone, NAD83(2011) Epoch 2010, as established using GPS observations processed against the Ohio CORS network, with the centeline of McNaughten Road being South 03°52'47" West, and are used to denote angles only.



*Ryan M. Hartig*  
Ryan M. Hartig  
Registration Number 8765

Date  
5/31/2024

Gardenia Properties, LLC  
Instrument #202005210069936  
PIN: 550-146751

198 McNaughten, LLC  
Instrument #201910180138964  
PIN: 267-298175

The Franklin County Commissioners  
Instrument #201707130095777  
PIN: 263-000913

McNaughten Place Condominium  
7th Amendment  
CPB 81, Pg. 28  
Declared in Instrument #199901210016151

Corporation Line  
Case No. 32-94  
Ord. No 62-95  
Recorded: O.R. 28616A01

City of Columbus, Ohio  
0.075 Acre Tract  
O.R. 30602A05

Corporation Line  
Case No. 18-17  
Ord. No 0107-2018  
Recorded: Instrument # 201802210024126

Corporation Line  
Case No. 10-76  
Ord. No. 1444-76  
Recorded: Misc. 167, Pg. 1

Corporation Line  
Case No. COC 263  
Ord. No. 1528-68  
Recorded: Misc 146, Pg. 410

City of Columbus  
Instrument #196812260028862  
PIN: 550-103921

Woodford L. Holzbacher and Judy S. Holzbacher  
Instrument #201202280027428  
PIN: 263-000270

Woodford L. Holzbacher and  
Judy S. Holzbacher  
D.B. 2993, Pg. 501  
PID: 263-000269

Mount Carmel Health  
Instrument #199302170070437  
PID: 263-000268

Vicinity Map  
Scale: 1" = 1000'