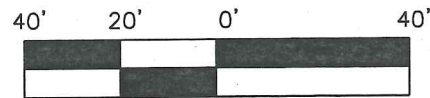


Vicinity Map

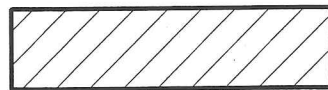
Being ±0.5 Acres, Situated in the State of Ohio, County of Franklin, Township of Sharon, in Farm Lot 56, Quarter Township 2, Township 2, Range 18, United States Military Lands.

Contiguity Percentage: 71%



Scale: 1" = 40'
August 15, 2019

Area to Be Annexed:



Existing City of Columbus Corp. Line

Proposed City of Columbus Corp. Line

PROPOSED ANNEXATION OF ±0.5 ACRES

FROM: Sharon Township
TO: City of Columbus

ANNEXATION
PLAT & DESCRIPTION
ACCEPTABLE
CORNELL R. ROBERTSON, P.E., P.S.
FRANKLIN COUNTY ENGINEER

By: *JRH* Date: 8/26/19

Worthington Office Park Condominium
Condo Plat Book 163, Page 43
I.N. 200603070043141

Existing
City of Columbus Corporation Line
Case# 57-02, Ord. # 0659-03
I.N. 200306120176153

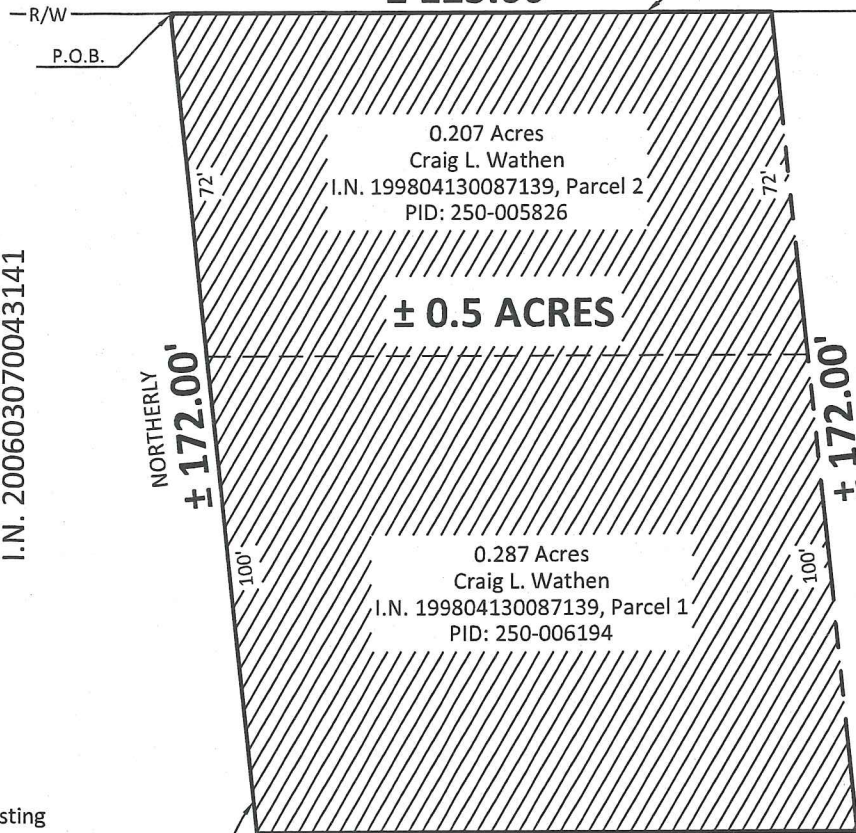


Paul T. Dinan

BY: Paul T. Dinan, Professional Surveyor No. 7312

OAK STREET 40'

Ded. P.B. 1, Pg. 401
EASTERLY
± 125.00'

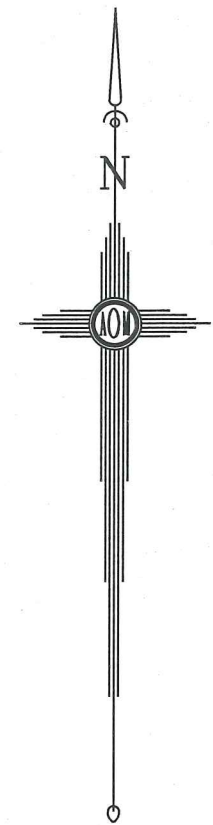


Worthington Office Park Condominium
Condo Plat Book 163, Page 43
I.N. 200603070043141

STATION STREET 40'

Existing
City of Columbus Corporation Line
Case# 5-02, Ord. # 1078-02
I.N. 200211140289386

Norfolk and Western Railway Co.
Deed Book 2599, Page 623
PID: 250-000109



MyersSurveying COMPANY

2740 E. Main St., Bexley, Ohio 43209-2577
(614)235-8677 ~ (614)235-4559 fax
info@myerssurveying.com

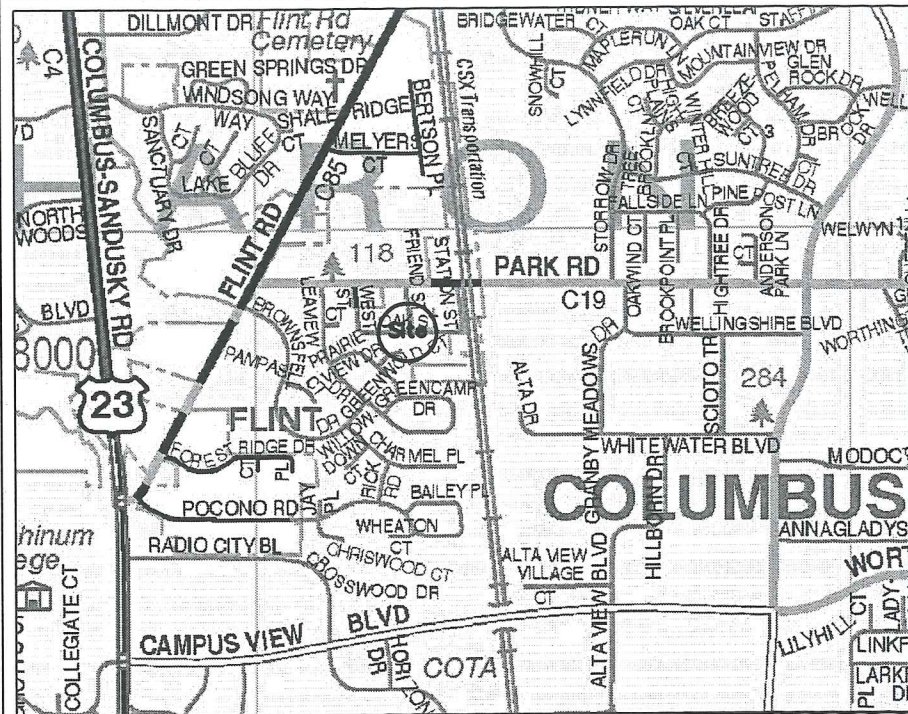
m.o.# 3-8/01/2019

X -

T -

8-15-19

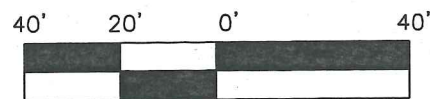
Date



Vicinity Map

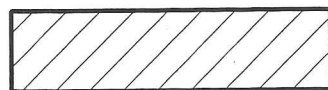
Being ±0.5 Acres, Situated in the State of Ohio, County of Franklin, Township of Sharon, in Farm Lot 56, Quarter Township 2, Township 2, Range 18, United States Military Lands.

Contiguity Percentage: 71%



Scale: 1" = 40'
August 15, 2019

Area to Be Annexed:



Existing City of Columbus Corp. Line

Proposed City of Columbus Corp. Line

PROPOSED ANNEXATION OF ±0.5 ACRES

FROM: Sharon Township
TO: City of Columbus

ANNEXATION
PLAT & DESCRIPTION
ACCEPTABLE
CORNELL R. ROBERTSON, P.E., P.S.
FRANKLIN COUNTY ENGINEER

By: *JRH* Date: 8/26/19

Worthington Office Park Condominium
Condo Plat Book 163, Page 43
I.N. 200603070043141

Existing
City of Columbus Corporation Line
Case# 57-02, Ord. # 0659-03
I.N. 200306120176153



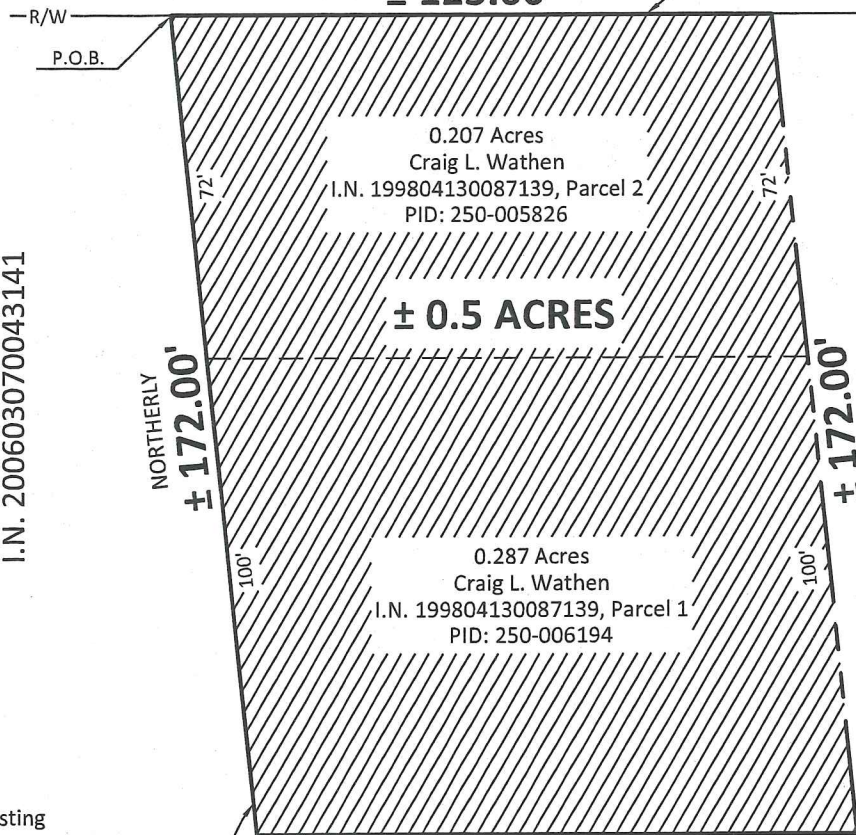
Paul T. Dinan

BY: Paul T. Dinan, Professional Surveyor No. 7312

OAK STREET 40'

Ded. P.B. 1, Pg. 401

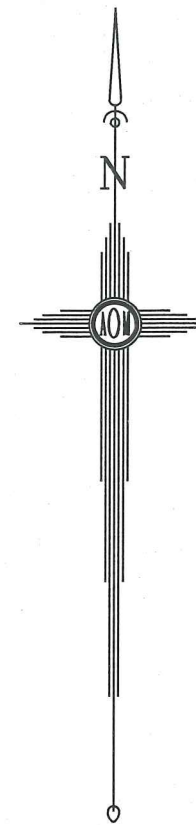
EASTERLY
± 125.00'



Worthington Office Park Condominium
Condo Plat Book 163, Page 43
I.N. 200603070043141

Existing
City of Columbus Corporation Line
Case# 5-02, Ord. # 1078-02
I.N. 200211140289386

Norfolk and Western Railway Co.
Deed Book 2599, Page 623
PID: 250-000109



MyersSurveying COMPANY

2740 E. Main St., Bexley, Ohio 43209-2577
(614)235-8677 ~ (614)235-4559 fax
info@myerssurveying.com

m.o.# 3-8/01/2019

X -

T -

8-15-19

Date