

TEMPORARY EASEMENT T-3
0.356 ACRES

Situated in the State of Ohio, County of Franklin, City of Columbus, and located in Section 2, Township 2 North, Range 17 West, United States Military Lands, also being a part of 5.890 acres tract as described in a deed to Snyder Smith Partnership I in Official Record 11800G16 on file in the Recorder's Office of Franklin County, Ohio and being particularly described as follows:

Beginning for reference at the southeast corner of a 0.963 acre tract as described in a deed to NCRDIBLE PROPERTIES, LLC of record in Instrument No. 2005110302311986 on file in the Recorder's Office of Franklin County, Ohio. Same being the northwest corner of said Grantor's tract, said point also lies in the easterly right of way line of Lauffer Road;

Thence **S 31 degrees 28 minutes 45 seconds W** a distance of **37.68 feet** with the existing easterly of right of way line of Lauffer Road and the west line of said Grantor's tract to a point in said right of way line;

Thence **S 37 degrees 15 minutes 01 seconds E** a distance of **61.67 feet** across said Grantor's tract to the **TRUE POINT OF BEGINNING**;

Thence **S 37 degrees 15 minutes 01 seconds E** crossing the Grantor's tract a distance of **134.58 feet** to a point;

Thence **S 67 degrees 45 minutes 48 seconds E** a distance of **119.26 feet** to the westerly line of a 3.709 acre tract described in a deed to Lauffer Ravines, LLC of record in Instrument No. 200406180140650 on file in the Recorder's Office of Franklin County, Ohio, same being the Grantor's easterly line;

Thence **S 25 degrees 58 minutes 01 seconds W** a distance of **69.13 feet** with the westerly line of said Lauffer Ravines tract and the Grantor's easterly line to an angle point;

Thence **N 67 degrees 45 minutes 48 seconds W** a distance of **77.21 feet** crossing the Grantor's tract to a point;

Thence **S 38 degrees 17 minutes 06 seconds W** a distance of **90.81 feet** to a point;

Thence **N 51 degrees 42 minutes 54 seconds W** a distance of **36.00 feet** to a point;

Thence **N 38 degrees 17 minutes 06 seconds E** a distance of **104.60 feet** to a point;

Thence **N 37 degrees 15 minutes 01 seconds W** a distance of **120.46 feet** to point;

Thence **N 02 degrees 33 minutes 17 seconds E** a distance of **56.23 feet** to the **TRUE POINT OF BEGINNING**, containing 0.356 acre of land, more or less.

The above described area contains a total of **0.356 acres** within Franklin County Auditor's Parcel Number 600-175624, which includes 0.000 acres in the present road occupied.

Grantor claims title by Instrument recorded in Official Record 11800G16, in the records of Franklin County, Ohio.

Bearings used in this description are based on Ohio State Plane Coordinates, South Zone, NAD 83.

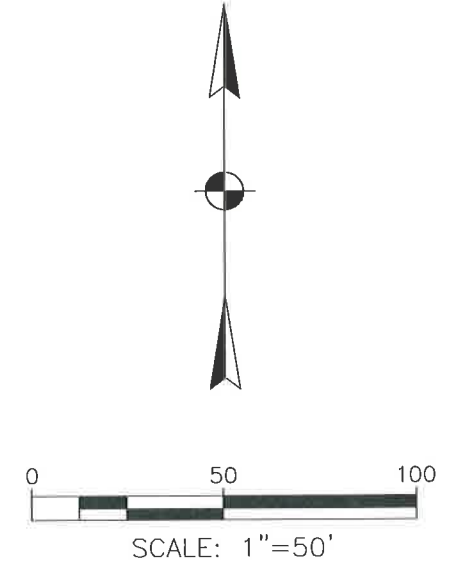
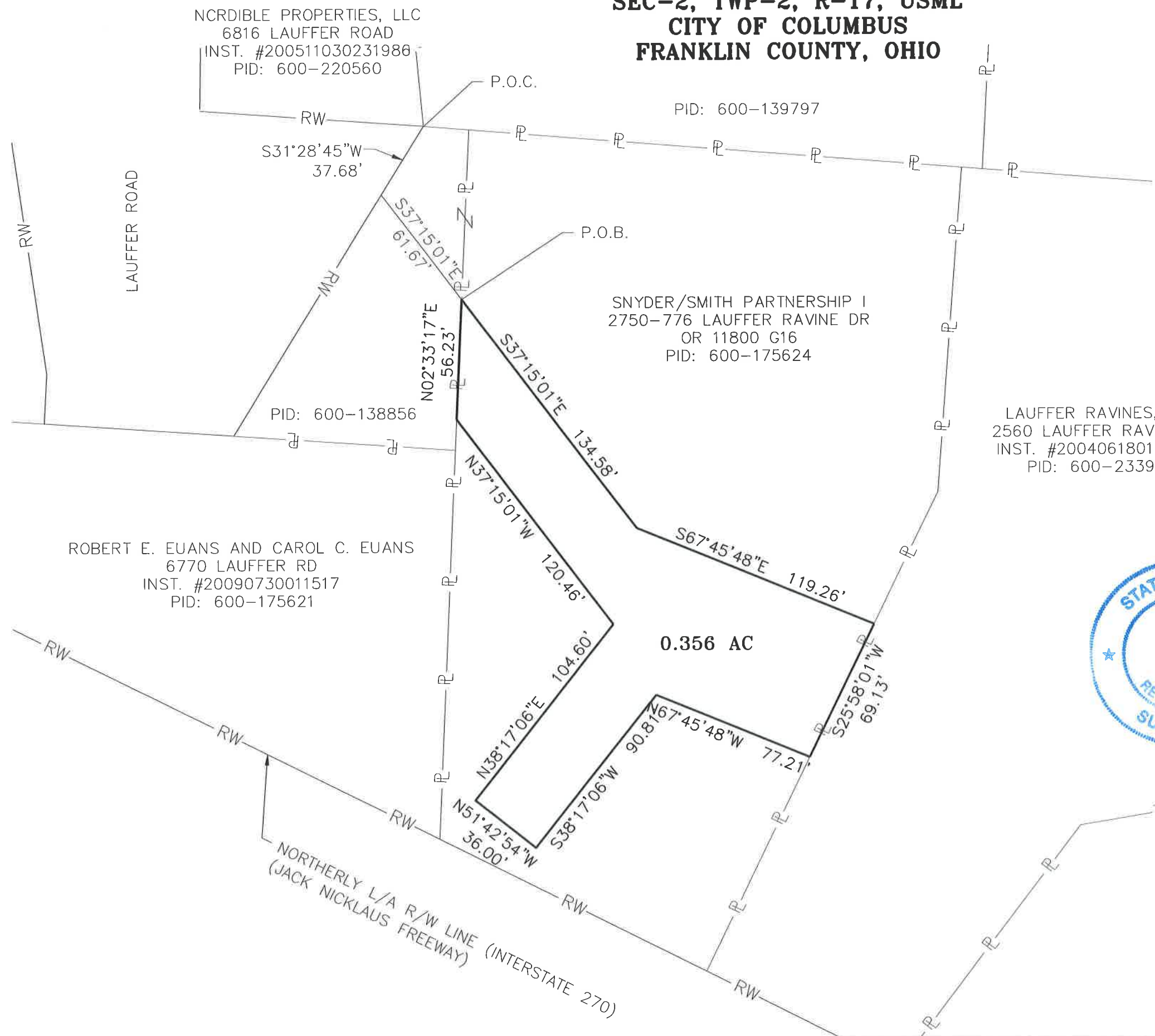
This description was prepared from existing records and does not represent a field survey.

Resource International, Inc.

Mark S. Ward 9-15-13
Mark S. Ward, P.S.
Professional Surveyor No. S-7514




**PLAT OF 0.356 ACRES
LOCATED IN
SEC-2, TWP-2, R-17, USML
CITY OF COLUMBUS
FRANKLIN COUNTY, OHIO**



NOTE:
THIS PLAT PREPARED FROM RECORD DOCUMENTS.



PLATTED BY:
RESOURCE INTERNATIONAL, INC.
Mark S. Ward 9-13-13
MARK S. WARD P.S. No., S-7514 DATE

DESCRIPTION				
TEMPORARY EASEMENT T-3				
LOCATION				
2750-776 LAUFFER RAVINE DR COLUMBUS, OH				
CLIENT				
CHESTER ENGINEERS 88 E BROAD STREET				
 RESOURCE INTERNATIONAL, INC. 6350 PRESIDENTIAL GATEWAY COLUMBUS, OHIO 43231				
DRAWN BY:	CHECKED BY:	CREW CHIEF:	PROJECT No.	SHEET
EJG	MSW		W09-124	1 OF 1
SCALE:	DATE:			
1" = 50'	7-23-13			