

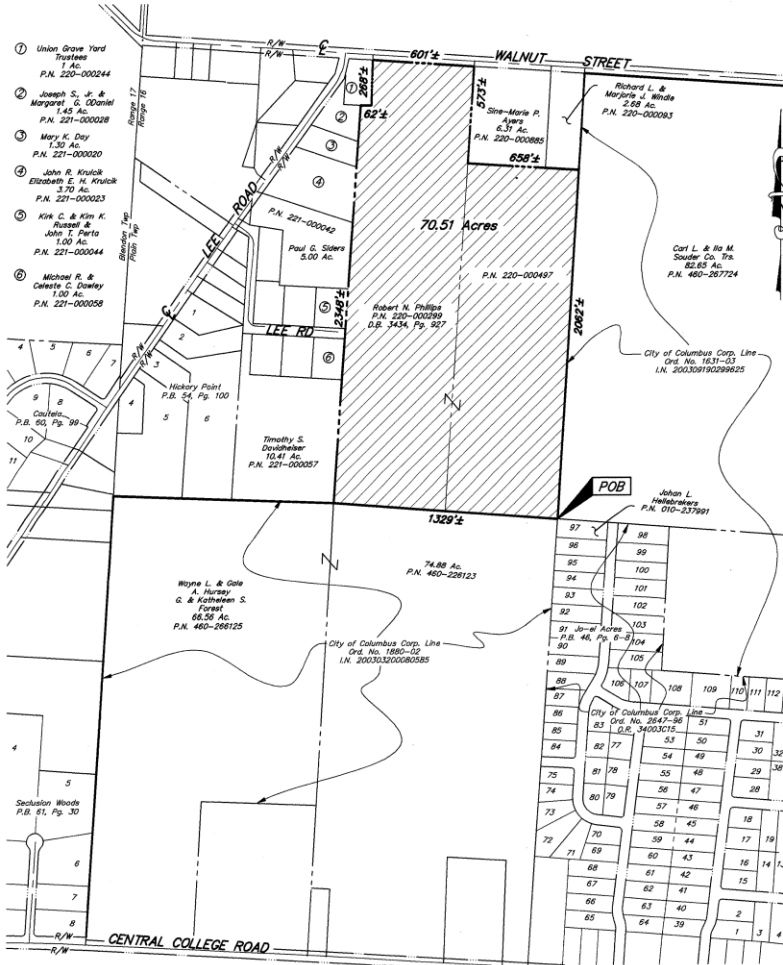
MAP ANNEXATION AN04-001 70.51 Acres in Plain Township Robert N. Phillips

EMHT
INC.
ENGINEERS, SURVEYORS, PLANNERS, SCIENTISTS
RYANS, MICHENER, HAMILTON & TETON, INC.
179 MILL STREET, COLUMBUS, OHIO 43220-3534
TEL: 614-471-5125 • FAX: 614-471-9286

**PROPOSED ANNEXATION
LOCATED IN
QUARTER TOWNSHIP 2, TOWNSHIP 2, RANGE 16
UNITED STATES MILITARY LANDS
PLAIN TOWNSHIP, FRANKLIN COUNTY, OHIO**

SCALE 1" = 500'

DECEMBER 10, 2003



G:\PROJECT\2003\1847\DWG\1\1847\ANNEX - D. XREFS: - PLOTTED BY: MGRREENY - December 09, 2003 - 3:31 PM



Note:
This annexation does not create any unincorporated islands.

Total perimeter of annexation area is 7,901 feet, of which 3,391 feet is contiguous with the City of Columbus Municipality, giving 4.3% perimeter contiguity.

LEGEND
EXISTING CITY OF COLUMBUS CORP. LINE
PROPOSED CITY OF COLUMBUS CORP. LINE
AREA TO BE ANNEXED

LOCATION MAP
No Scale

By _____
Professional Surveyor No. 7868