

Dave Stark 9/18/03
 Donald Stark, Attorney for Applicant
 Date

Sheet 1 of 3

SCALE 1" = 30.00'



2022-01-14
 CLINCH COUNTY, OHIO
 11:41:21 AM
 11/14/2022
 11/14/2022

Midland Atlantic
 properties

CLINTONVILLE, OHIO

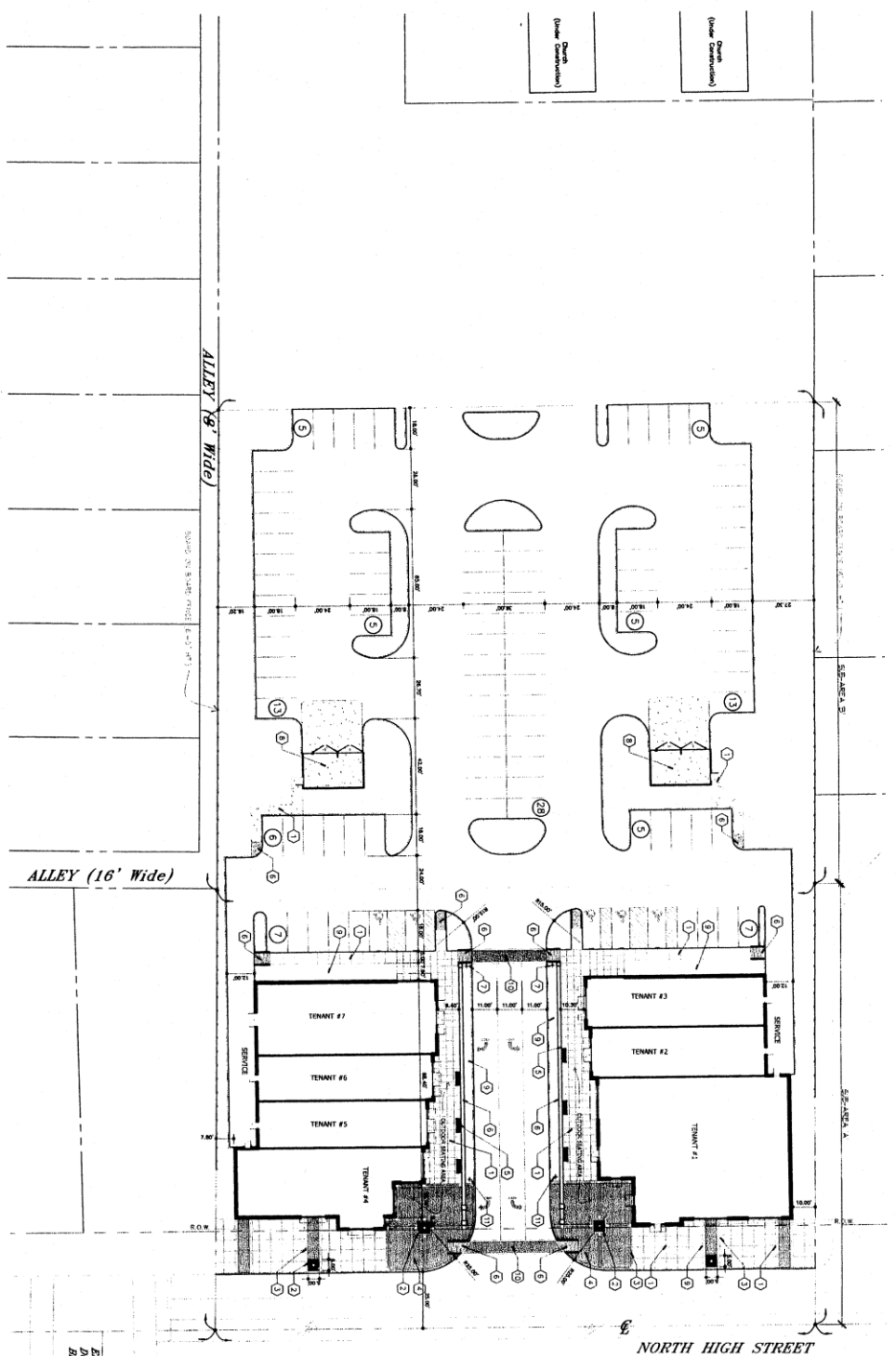
THIS SHEET
 IS FOR
 INFORMATION
 ONLY

DATE: _____
 COMMENT: _____

PROJECT:
 STORE NUMBER:
 NO. PROJECT NUMBER:

CS1.1

CPD Sub-Area Map



- KEYED NOTES**
- 1 CONCRETE SIDEWALK
 - 2 TYP. DRIVE (CONCRETE, 20")
 - 3 PAVED BIWAY
 - 4 PAVED PATIO, HERSON BONE PATIOM W/ SOLID CORE
 - 5 CURB AND BENCHES
 - 6 6" CONC. SCYTHAL W/ JUNCTION COB
 - 7 ADA COMPL. RAMP
 - 8 EXHAUSTION LIGHT FIXTURES
 - 9 CURBSTEP W/ 4" RAMP HIGH CURBSTEP SURFACING
 - 10 LANDSCAPE BED
 - 11 PAVED CROSSWALKS W/ SOLID CORE

SITE DATA

SUB-AREA W: 1.184 ACRES
 SUB-AREA R: 1.272 ACRES

TOTAL SITE AREA: 2.456 AC.

BUILDING W: (9,400 +/- SF)
 BUILDING R: (9,400 +/- SF)

TOTAL GROSS BUILDING AREA: 18,800 +/- SF

COMMERCIAL DEVELOPMENT PARKING:
 PARKING SUB-AREA W: 85 SPACES
 PARKING SUB-AREA R: 85 SPACES

TOTAL PARKING = 99 SPACES

TENANT SPACES DERIVED HEREON ARE ILLUSTRATIVE ONLY. THE PROPOSED DEVELOPMENT, BUT IS SUBJECT TO ADJUSTMENT WITH FINAL SITE DESIGN AND ENGINEERING.
 CPD CASE # (203-057)



Donald Plank, Attorney for Applicant
 Date

SITE DATA

SUB-AREA 'A': 1.184 ACRES.

SUB-AREA 'B': 1.272 ACRES

TOTAL SITE AREA : 2.456 AC.

BUILDING 'A'= (9,400 +/- SF)

BUILDING 'B'= (9,400 +/- SF)

TOTAL GROSS BUILDING AREA: 18,800 +/- SF

COMMERCIAL DEVELOPMENT PARKING:

PARKING SUB-AREA 'A' = 14 SPACES

PARKING SUB-AREA 'B' = 85 SPACES

TOTAL PARKING = 99 SPACES

TENANT SPACES DEPICTED HEREON ARE ILLUSTRATIVE ONLY.
SITE DEVELOPMENT DEPICTED HEREON IS REPRESENTATIVE OF THE
PROPOSED DEVELOPMENT, BUT IS SUBJECT TO ADJUSTMENT WITH
FINAL SITE DESIGN AND ENGINEERING.

CPD CASE # (Z03-057)

Sheet 2 of 3

PLANTING SCHEDULE

SYMBOL	KEY	QUAN.	BOTANICAL NAME COMMON NAME	SIZE CONDITION & COMMENTS
○	LM	X	LIRIOPE MUSCARI LILTYURF	8" HT #1 CONT
○	CA	X	HUMMINGBIRD SUMMERSWEET CLETHRA AL 'HUMMINGBIRD'	24" HT/SP CONT
○	SB	X	LITTLE PRINCESS SPIREA BUMALDA	24" HT/SP CONT
⊗	RA	X	RHUS AROMATICA FRAGRANT SUMAC	24"SPD. #3 CONT.
⊗	TD	X	TAXUS DENSIFORMIS DENSE YEW	24" HT/SPR B&B
○	CD	X	ROYAL BEAUTY COTONEASTER COTONEASTER DAMMERI	12" HT-24" SPD CONT
⊗	VR	X	VIBURNUM RHYTIDOPHYLLUM ALLEGHANY VIBURNUM	36" HT B&B
○	VD	X	VIBURNUM DENTATUM ARROWWOOD VIBURNUM	36" HT B&B
⊗	JC	X	JUNIPERUS CHINENSIS SEA GREEN JUNIPER	24"HT/SPR B&B
⊗	PP	X	PICEA PUNGENS COLORADO SPRUCE	8-10' HT. MIN. B&B
○	AC	X	AMELACHIER CANADENSIS SERVICEBERRY	6-8' HT. MIN. B&B SEE DETAIL L4-03 MULTI-STEMMED (3) MIN

	FA	X	FRAXINUS A. 'CUMMARON' WHITE ASH	3" CAL. B & B SEE DETAIL L4-03 6' CLEAR CANOPY
	PA	X	PLANTANUS AGERIFOLIA 'BLOODGOOD' LONDON PLANE TREE	3" CAL. B & B SEE DETAIL L4-03 6' CLEAR CANOPY
	EXISTING TREES TO BE PRESERVED			
	PLANTING BED EDGE SEE PLANTING NOTES & DETAIL L4-06			
	SHREDED HARDWOOD MULCH APPLIED AT 2" TO 3" THICKNESS CHANGE MUST BE APPROVED BY OWNER REPRESENTATIVE.			
	KENTUCKY BLUE GRASS AND PERENNIAL RYE MIX PROVIDED BY LOCAL GROWING SOURCE.			
TOTAL NUMBER OF PLANTS SHALL BE VERIFIED ON THE LANDSCAPE PLAN. IF PLAN TOTAL DIFFERS FROM THIS SCHEDULE, THE PLAN SHALL GOVERN.				

NOTE:
LANDSCAPING DEPICTED HEREON IS REPRESENTATIVE OF THE PLANNED SITE
LANDSCAPING, BUT IS SUBJECT TO ADJUSTMENT WITH FINAL SITE DESIGN AND
ENGINEERING.