

DEDICATION OF PART OF PARK ROAD AND ALTA DRIVE EXTENSION

LEGEND

- EXISTING 3/4" ID PIPE
- 3/4" ID PIPE SET WITH CAP
STAMPED "HOCKADEN & ASSOC."
- △ RAIL ROAD SPIKE SET

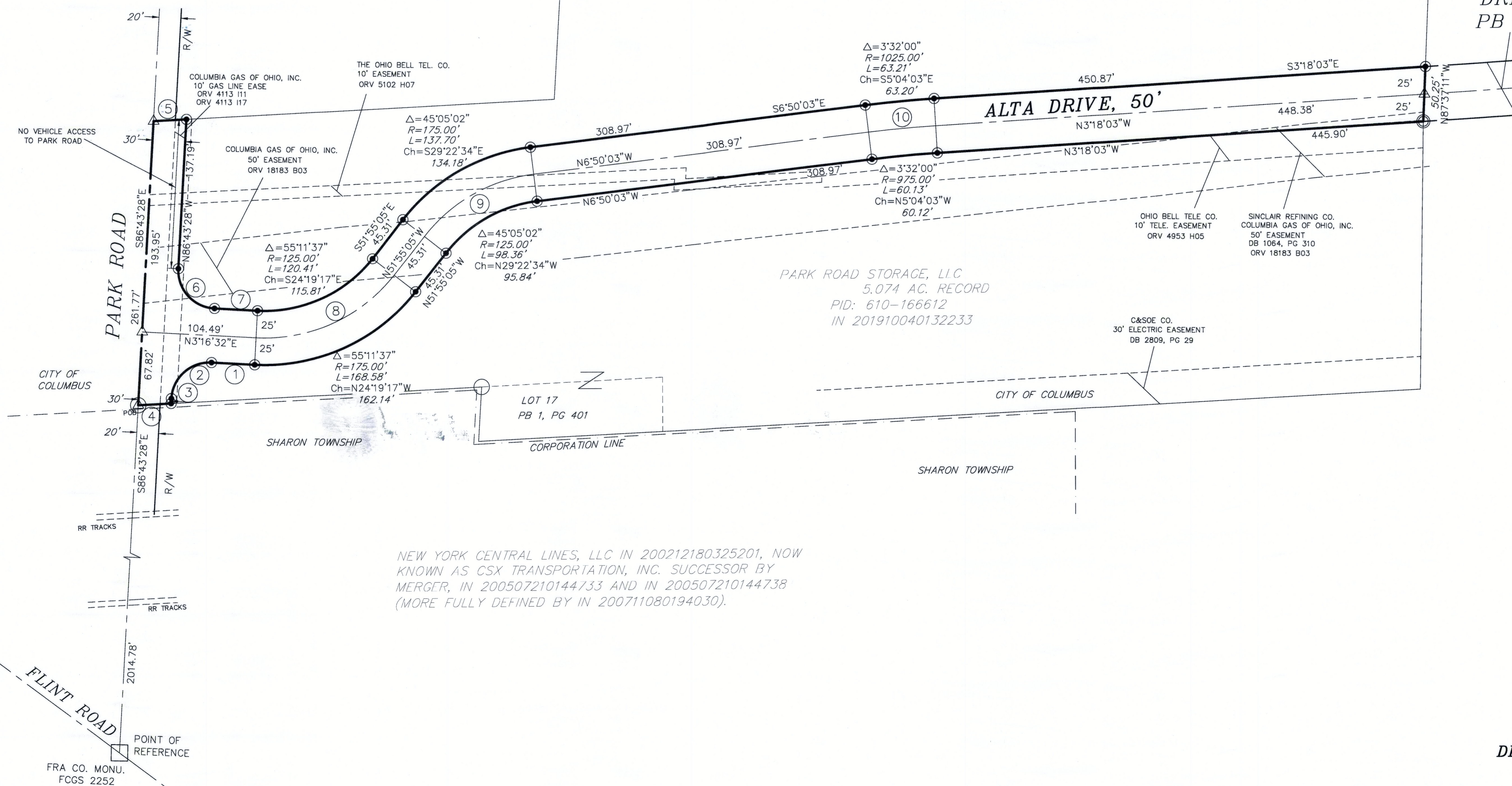
ACREAGE BREAKDOWN	
NEW RIGHT OF WAY	
DEDICATED	1.451 ACRES
PRESENT RIGHT OF WAY	
OCCUPIED (PRO)	0.120 ACRES
TOTAL	1.571 ACRES

L.M. PROPERTIES OF OHIO LTD
5.285 ACRES
PID: 610-166673
IN 200305300160919

PARK VIEW VILLAGE HOLDING COMPANY, LLC
13.252 AC. RECORD
PID: 610-300179
IN 201910030130989

WORTHINGTON MEADOWS OWNER, LP
11.246 Ac.
IN 201711200164355

EXISTING ALTA
DRIVE (50')
PB 67, PG 69



PARK ROAD STORAGE, LLC
5.074 AC. RECORD
PID: 610-166612
IN 201910040132233

NEW YORK CENTRAL LINES, LLC IN 200212180325201, NOW
KNOWN AS CSX TRANSPORTATION, INC. SUCCESSOR BY
MERGER, IN 200507210144733 AND IN 200507210144738
(MORE FULLY DEFINED BY IN 200711080194030).

CURVE	LENGTH	DELTA	RADIUS	CHORD	BEARING
1	39.55'				N31'16'32"E
3	4.63'				N86'43'28"W
4	30.11'				N2'48'44"W
5	30.17'				S2'52'53"E
7	39.49'				S3'16'32"W

CURVE	LENGTH	DELTA	RADIUS	CHORD	BEARING
2	54.98'	90'00'00"	35.00'	49.50'	N41'43'28"W
6	54.98'	90'00'00"	35.00'	49.50'	S48'16'32"W

CURVE	LENGTH	DELTA	RADIUS	CHORD	BEARING
8	144.50'	55'11'37"	150.00'	138.97'	N24'19'17"W
9	118.03'	45'05'02"	150.00'	115.01'	N29'22'34"W
10	61.67'	3'32'00"	1000.00'	61.66'	N05'04'03"W

DEDICATION OF PART OF PARK ROAD
AND ALTA DRIVE EXTENSION