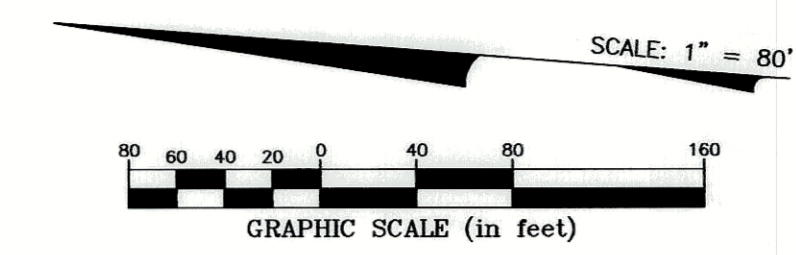
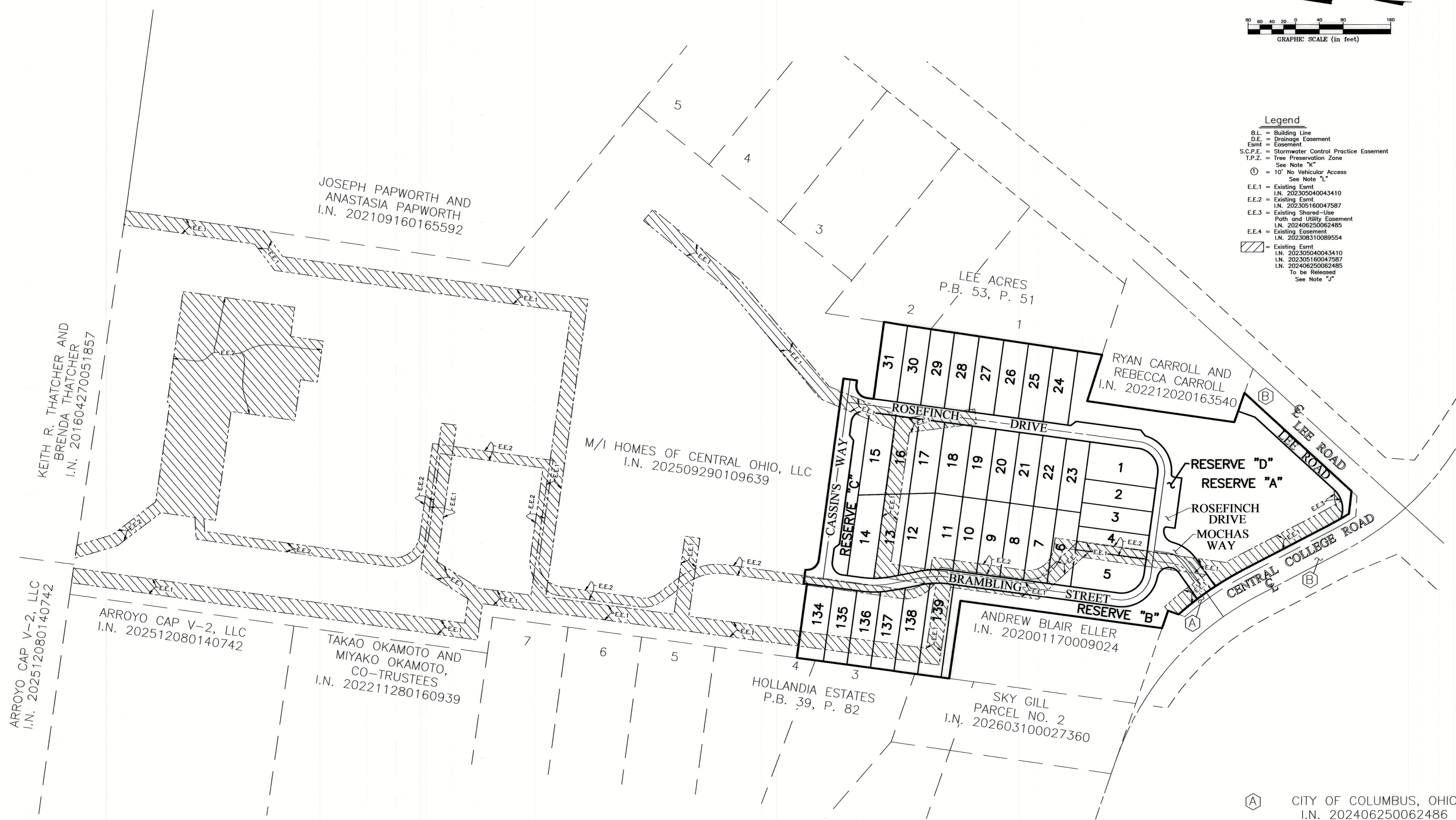


WOODLANDS AT CENTRAL COLLEGE SECTION 1



- Legend**
- B.L. = Building Line
 - D.E. = Drainage Easement
 - Esmt = Easement
 - S.C.P.E. = Stormwater Control Practice Easement
 - T.P.Z. = Tree Preservation Zone
 - See Note "K"
 - ⊙ = 10' No Vehicular Access
 - See Note "L"
 - EE.1 = Existing Esmt
 - I.N. 202305040043410
 - EE.2 = Existing Esmt
 - I.N. 202305160047587
 - EE.3 = Existing Shared-Use Path and Utility Easement
 - I.N. 202406250062485
 - EE.4 = Existing Easement
 - I.N. 202308310089554
 - Existing Esmt
 - I.N. 202305040043410
 - I.N. 202305160047587
 - I.N. 202406250062485
 - To be Released
 - See Note "J"



- (A) CITY OF COLUMBUS, OHIO
I.N. 202406250062486
- (B) FRANKLIN COUNTY COMMISSIONERS
O.R. 23150H09

J:\20250562\DWG\CASHIERS\PLAT\20250562-VS-PLAT-PLAT1.DWG plotted by KIRK, MATHEW on 3/21/2026 7:28:35 AM last saved by JMASTON on 3/20/2026 3:17:08 PM
 Veris: 20250562-CS-REFR-N.DWG & 20250562-VS-REFR-N.DWG & 20250562-VS-REFR-N.DWG & 20250562-VS-REFR-N.DWG & 20250562-VS-REFR-N.DWG