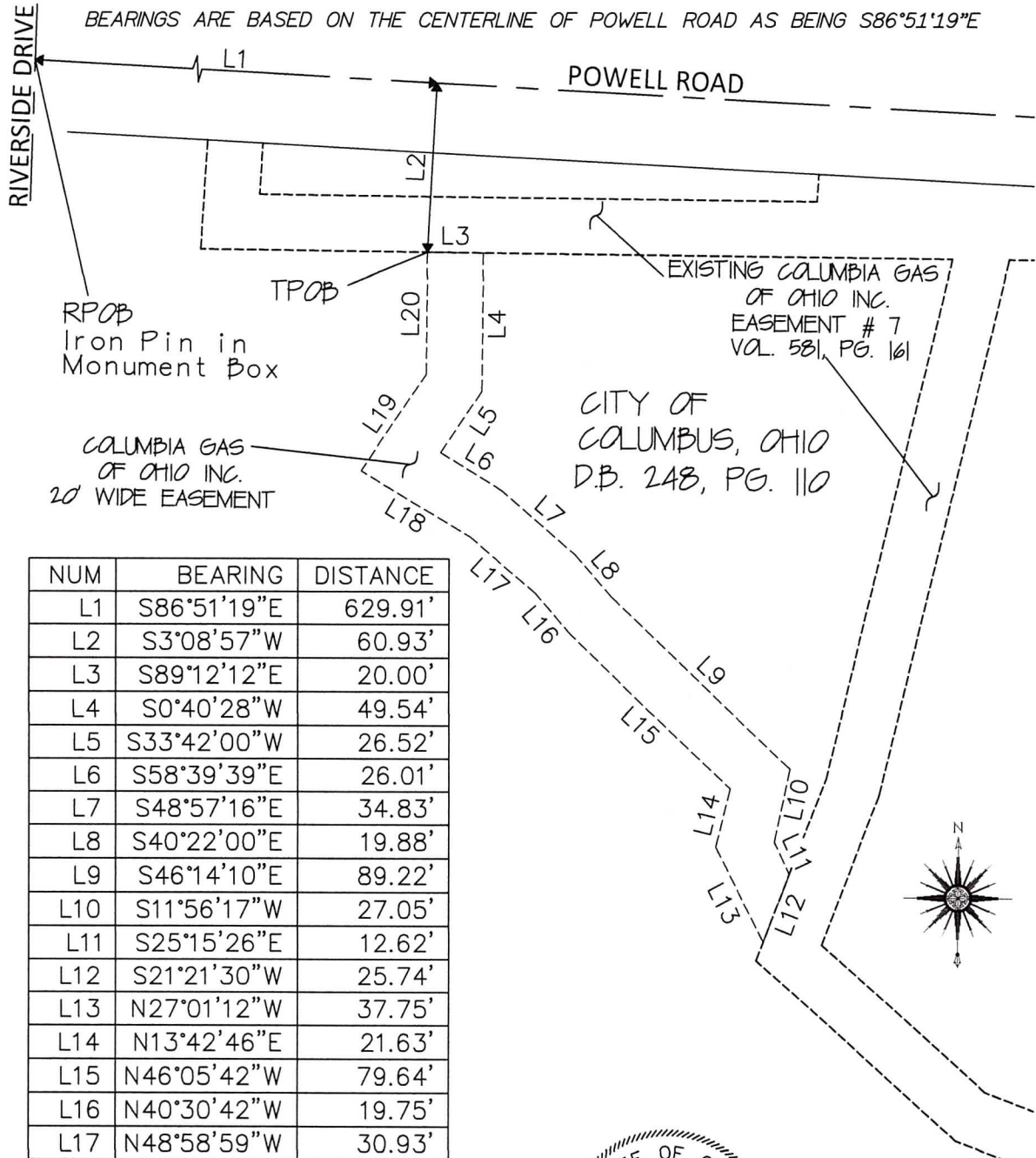


EXHIBIT "A"
 COLUMBIA GAS OF OHIO, INC.
 NON-EXCLUSIVE GAS PIPELINES
 EASEMENT



NUM	BEARING	DISTANCE
L1	S86°51'19"E	629.91'
L2	S3°08'57"W	60.93'
L3	S89°12'12"E	20.00'
L4	S0°40'28"W	49.54'
L5	S33°42'00"W	26.52'
L6	S58°39'39"E	26.01'
L7	S48°57'16"E	34.83'
L8	S40°22'00"E	19.88'
L9	S46°14'10"E	89.22'
L10	S11°56'17"W	27.05'
L11	S25°15'26"E	12.62'
L12	S21°21'30"W	25.74'
L13	N27°01'12"W	37.75'
L14	N13°42'46"E	21.63'
L15	N46°05'42"W	79.64'
L16	N40°30'42"W	19.75'
L17	N48°58'59"W	30.93'
L18	N59°13'12"W	45.65'
L19	N33°53'59"E	41.89'
L20	N0°40'23"E	43.66'



01-06-19

Dustin R O'Neal

DUSTIN R. O'NEAL P.S. 8268
 RW SURVEY LLC



SCALE
 1"=60'

JOB ORDER:
 18-0132627-00

LOCATION:
 COLUMBUS ZOO

COUNTY:
 DELAWARE

STATE:
 OHIO

PREPARED BY:
 RW SURVEY, LLC
 7933 STRAITS FARM N
 NEW ALBANY, OHIO 43054
 614-795-3544, FAX 614-289-3580
 WWW.RWSURVEY.BIZ

RWS JOB #:

EXHIBIT B

COLUMBIA GAS OF OHIO, INC.

0.139 ACRE PIPELINE EASEMENT

Situated in the State of Ohio, County of Delaware, Section 3, Township 3, Range 9, United States Military Lands, Liberty Township and being a part of that 70.30 acre tract conveyed to the City of Columbus, Ohio in Deed Book 248, Page 110 and being more particularly described as follows:

Beginning, for Reference, at a iron pin inside a monument box marking the intersection of the centerlines of Riverside Drive and Powell Road;

thence **South 86°51'19"East 629.91 feet**, in the centerline of said Powell Road to a point;

thence **South 3°08'57"West 60.93 feet**, to a point being the **Place of Beginning** of the herein described 0.139 acre easement;

thence across said grantors tract the following bearings and distances;

South 89°12'12"East 20.00 feet to a point;

South 0°40'28"West 49.54 feet to a point;

South 33°42'00"West 26.52 feet to a point;

South 58°39'39"East 26.01 feet to a point;

South 48°57'16"East 34.83 feet to a point;

South 40°22'00"East 19.88 feet to a point;

South 46°14'10"East 89.22 feet to a point;

South 11°56'17"West 27.05 feet to a point;

South 25°15'26"East 12.62 feet to a point;

South 21°21'30"West 25.74 feet to a point;

North 27°01'12"West 37.75 feet to a point;

North 13°42'46"East 21.63 feet to a point;

North 46°05'42"West 79.64 feet to a point;

North 40°30'42"West 19.75 feet to a point;

North 48°58'59"West 30.93 feet to a point;

North 59°13'12"West 45.65 feet to a point;

North 33°53'59"East 41.89 feet to a point;

North 0°40'23"East 43.66 feet to the Place of Beginning containing 0.139 acres more or less.

This description is based on a field survey in December, 2018 by Dustin R. O'Neal, State of Ohio Professional Surveyor #8268. The centerline of Powell Road with a bearing of South 86°51'19" East shown on survey of record 19-3-3-015 is the basis of bearing for this survey.



01/5/19

Dustin R. O'Neal, Registered Surveyor #8268
RW Survey, LLC 7933 Straits Farm N New Albany Ohio 43054

Date