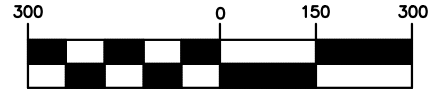


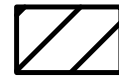
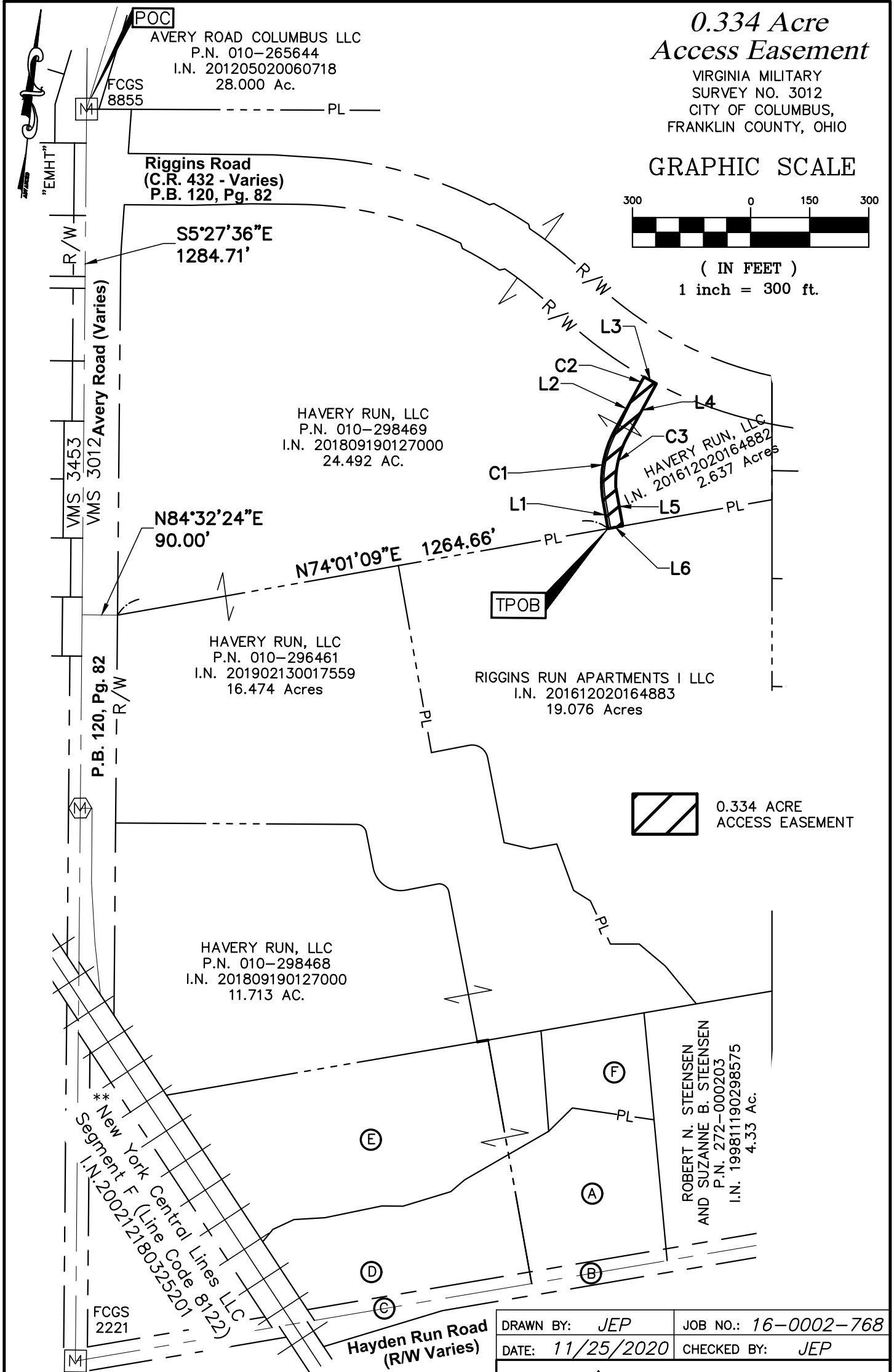
# 0.334 Acre Access Easement

VIRGINIA MILITARY  
SURVEY NO. 3012  
CITY OF COLUMBUS,  
FRANKLIN COUNTY, OHIO

## GRAPHIC SCALE



( IN FEET )  
1 inch = 300 ft.



0.334 ACRE  
ACCESS EASEMENT

HAVERY RUN, LLC  
P.N. 010-298468  
I.N. 201809190127000  
11.713 AC.

HAVERY RUN, LLC  
P.N. 010-296461  
I.N. 201902130017559  
16.474 Acres

HAVERY RUN, LLC  
P.N. 010-298469  
I.N. 201809190127000  
24.492 AC.

RIGGINS RUN APARTMENTS I LLC  
I.N. 201612020164883  
19.076 Acres

ROBERT N. STEENSEN  
AND SUZANNE B. STEENSEN  
P.N. 272-000203  
I.N. 19981190298575  
4.33 AC.

\*\* New York Central Lines LLC  
Segment F (Line Code 8122)  
I.N. 200212180325201

This Survey is based on existing records from Franklin County, and from actual field survey work.  
ADVANCED CIVIL DESIGN, INC.

Jonathan E. Phelps      Date  
Reg. No. 8241

DRAWN BY: JEP	JOB NO.: 16-0002-768
DATE: 11/25/2020	CHECKED BY: JEP



781 Science Blvd. Suite 100  
Gahanna, Ohio 43230

ph 614.428.7750  
fax 614.428.7755

# 0.334 Acre Access Easement

VIRGINIA MILITARY  
SURVEY NO. 3012  
CITY OF COLUMBUS,  
FRANKLIN COUNTY, OHIO

## OWNERSHIP INFORMATION

- (A) TIM A. WHITE  
P.N. 010-293806  
I.N. 200409140214881  
5.402 Ac. (REMAINDER)
- (B) Franklin County  
Commissioners  
I.N. 200504250076428  
0.241 Acres (4-WD2)
- (C) Franklin County  
Commissioners  
I.N. 200504250076428  
0.390 Acres (4-WD1)
- (D) WHITE ACRES, LLC  
P.N. 010-293805  
I.N. 201504150048407  
9.992 AC. (REMAINDER)
- (E) HAVERY RUN, LLC  
P.N. 010-298470  
P.N. 010-298471  
I.N. 201809190127001  
7.028 AC.
- (F) HAVERY RUN, LLC  
P.N. 010-296462  
I.N. 201612020164882  
17.961 AC. (REMAINDER)

Bearings are based on the Ohio State Plane Coordinate System, South Zone, NAD83 (NSRS2007). Said Bearings were derived from GPS observation and determine the centerline of Avery Road to have a bearing of N05°27'36"W between FCGS Monument 8855 and FCGS Monument 2221.

\*\* Now known as CSX Transportation Inc., successor by merger with NYC NEWCO, Inc., successors by merger with New York Central Lines LLC, whose merger documents have been summarized and recorded as Instrument Number 200711080194030 and individually recorded in Instrument Numbers 200507210144738 and 200507210144733.

### CURVE TABLE

NO.	DELTA	RADIUS	LENGTH	CHORD BEARING	CHORD DIST.
C1	38°38'05"	278.00'	187.46'	N03°20'12"E	183.93'
C2	0°39'22"	2609.01'	29.88'	N22°58'55"E	29.88'
C3	31°15'48"	242.00'	132.05'	S07°01'20"W	130.42'

### LINE TABLE

LINE	DISTANCE	BEARING
L1	69.83'	N15°58'51"W
L2	124.07'	N22°39'14"E
L3	35.83'	S67°18'34"E
L4	153.93'	S22°39'14"W
L5	100.88'	S15°58'51"E
L6	38.00'	S74°01'09"W

DRAWN BY: JEP	JOB NO.: 16-0002-768
DATE: 11/25/2020	CHECKED BY: JEP



781 Science Blvd. Suite 100  
Gahanna, Ohio 43230  
ph 614.428.7750  
fax 614.428.7755