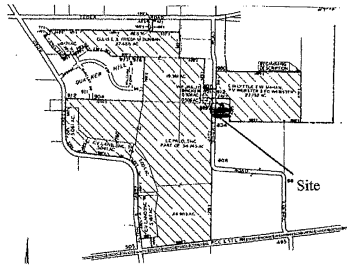


ANNEXATION AN11-011

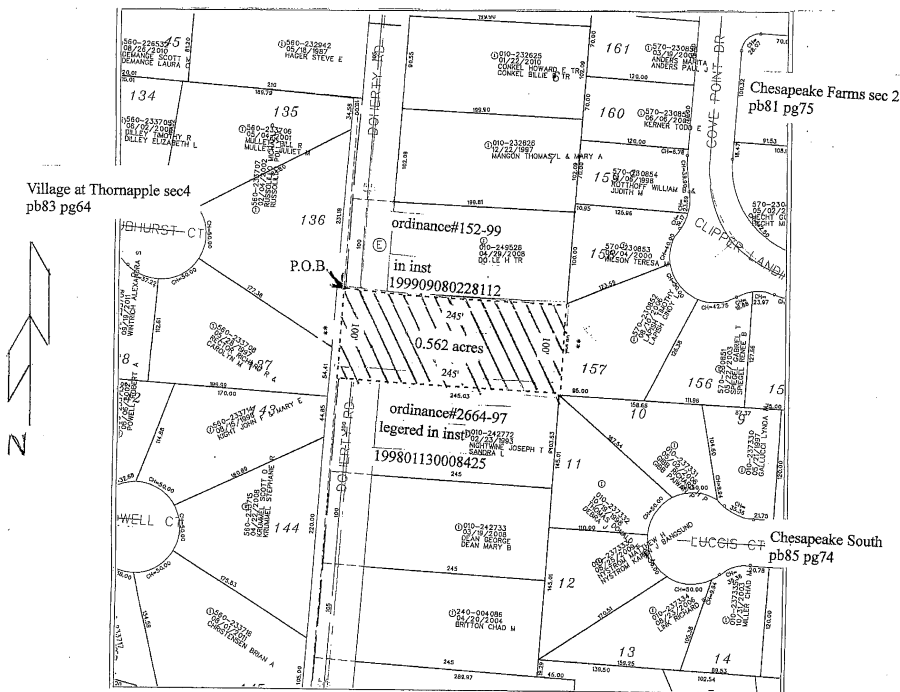
± .562 Acres in Prairie Township

842 Doherty Road



Proposed 0.562 acre annexation
 From Prairie twp to the city of Columbus
 situate in v.m.s. No7326,Prairie,twp,Franklin county Ohio.

ANNEXATION
 PLAT & DESCRIPTION
 ACCEPTABLE
 DEAN C. RINGLE, P.E., P.S.
 FRANKLIN COUNTY ENGINEER
 By BR Date 10/31/11



LEGEND

EXISTING CITY OF COLUMBUS CORP. LINE

Ordinance #830-79 and recorded in Misc.Rec.174, Page 439

AREA TO BE ANNEXED

1" = 100'

1 25' 50' 100'

RECEIVED

OCT 31 2011

Franklin County Engineer
 Dean C. Ringle, P.E., P.S.

