

**NOTE:**  
Advertising is prohibited without prior approval  
from the City of Columbus.

431 First LLC  
Inst. No. 200907160104544  
14 E. Gay St.

85 North High Street LLC (The Nicholas)  
Inst. No. 201409220124955  
85-111 N. High St.

1 Gay Company LLC  
Inst. No. 201408280113279  
1 E. Gay St.

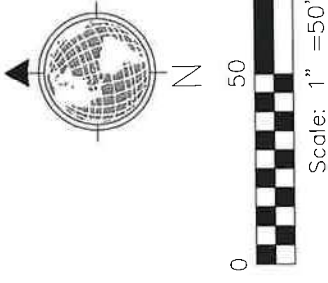
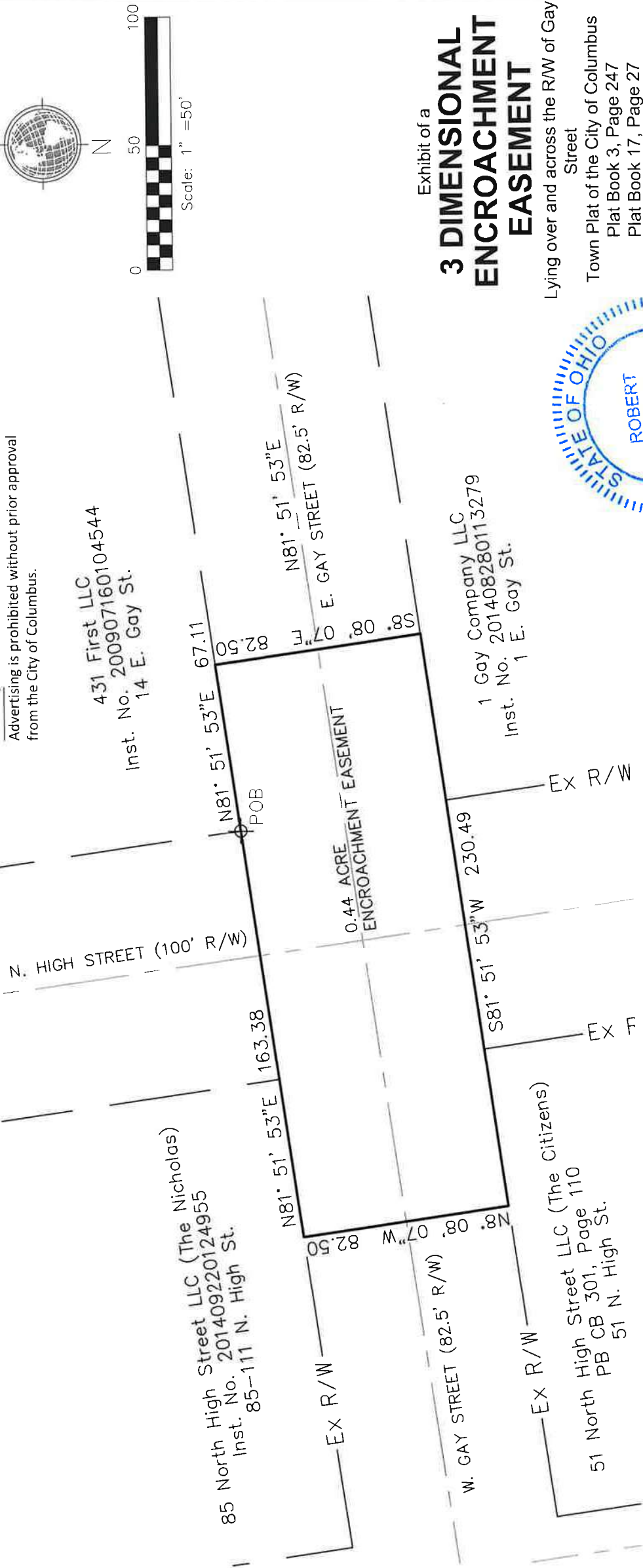
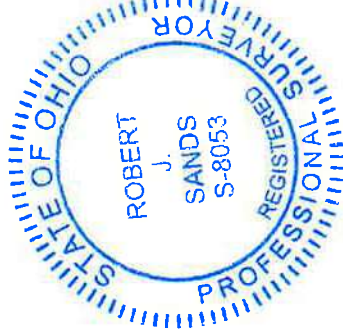


Exhibit of a  
**3 DIMENSIONAL  
ENCROACHMENT  
EASEMENT**

Lying over and across the RW of Gay Street  
Town Plat of the City of Columbus  
Plat Book 3, Page 247  
Plat Book 17, Page 27  
City of Columbus, Franklin County,  
Ohio  
Scale: 1" = 50'  
Date: June, 2022  
DLZ Job No.: 2221204100



*Robert J. Sands*  
Robert J. Sands  
Professional Surveyor No. S-8053  
Date: 07/07/22



**BASIS OF BEARINGS:**  
The Bearings shown hereon are based on an assumed meridian of North 81° 51'53" East for the centerline of Gay Street.  
The easement lies between the elevations of 775.08 and 868.01 (NAVD88).  
Elevations were established from Franklin County Survey Control Q188Reset. Elev. 746.31