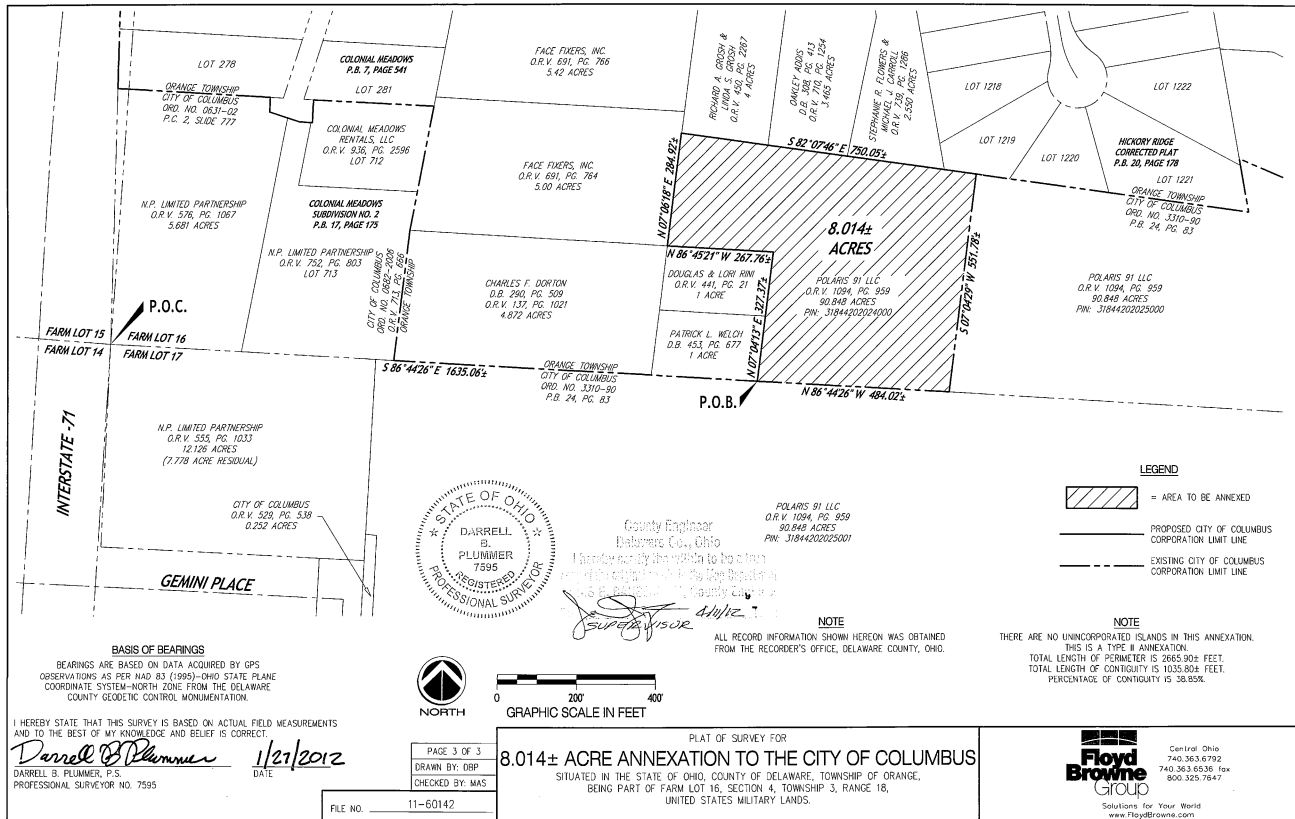


# ANNEXATION AN12-012

## ± 8.014 Acres in Orange Township

### Polaris 91 LLC



**BASIS OF BEARINGS**  
 BEARINGS ARE BASED ON DATA ACQUIRED BY GPS  
 OBSERVATIONS AS PER IAD 83 (1995)-OHIO STATE PLANE  
 COORDINATE SYSTEM-NORTH ZONE FROM THE DELAWARE  
 COUNTY GEODETIC CONTROL MONUMENTATION.

I HEREBY STATE THAT THIS SURVEY IS BASED ON ACTUAL FIELD MEASUREMENTS  
 AND TO THE BEST OF MY KNOWLEDGE AND BELIEF IS CORRECT.

*Darrell B. Plummer* 1/21/2012  
 DARRELL B. PLUMMER, P.S. DATE  
 PROFESSIONAL SURVEYOR NO. 7595



County Engineer  
 Delaware Co., Ohio

I hereby certify that the within to be a true and correct copy of the original as the same appears on file in the County Clerk's Office, Delaware County, Ohio.

*Supervisor*

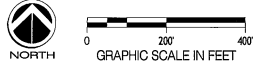
POLARIS 91 LLC  
 O.R.V. 1094, PG. 959  
 80,848 ACRES  
 PIN: 31844202025001

**NOTE**  
 ALL RECORD INFORMATION SHOWN HEREON WAS OBTAINED  
 FROM THE RECORDER'S OFFICE, DELAWARE COUNTY, OHIO.

**LEGEND**

- = AREA TO BE ANNEXED
- = PROPOSED CITY OF COLUMBUS CORPORATION LIMIT LINE
- = EXISTING CITY OF COLUMBUS CORPORATION LIMIT LINE

**NOTE**  
 THERE ARE NO UNINCORPORATED ISLANDS IN THIS ANNEXATION.  
 THIS IS A TYPE B ANNEXATION.  
 TOTAL LENGTH OF PERIMETER IS 2665.90± FEET.  
 TOTAL LENGTH OF CONTIGUITY IS 1035.50± FEET.  
 PERCENTAGE OF CONTIGUITY IS 38.85%.



PLAT OF SURVEY FOR  
**8.014± ACRE ANNEXATION TO THE CITY OF COLUMBUS**  
 SITUATED IN THE STATE OF OHIO, COUNTY OF DELAWARE, TOWNSHIP OF ORANGE,  
 BEING PART OF FARM LOT 16, SECTION 4, TOWNSHIP 3, RANGE 18,  
 UNITED STATES MILITARY LANDS.

PAGE 3 OF 3  
 DRAWN BY: DBP  
 CHECKED BY: MAS  
 FILE NO. 11-60142