

# PROPOSED ANNEXATION OF 0.103+/- ACRE

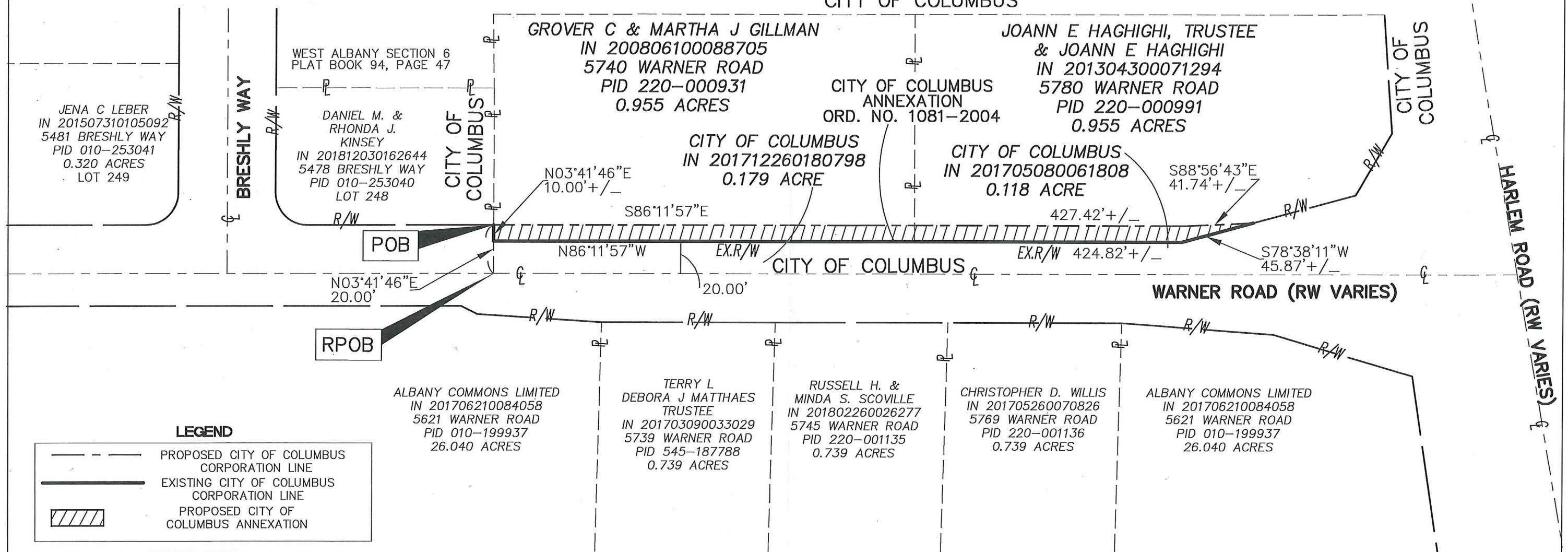
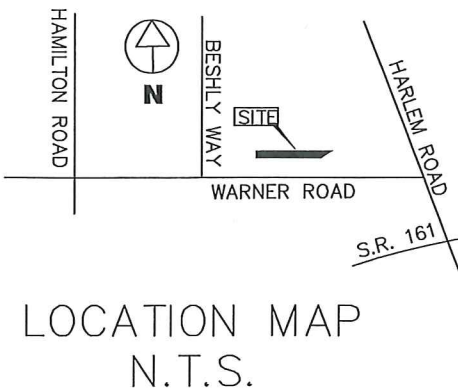
FROM PLAIN TOWNSHIP  
TO THE CITY OF COLUMBUS

SITUATED IN:  
R. 16, T. 2, QTR. T. 2, LOT 14, U.S.M.L.  
PLAIN TOWNSHIP  
FRANKLIN COUNTY, OHIO

0 30 60  
SCALE: 1"=60'

THIS EXHIBIT DOES NOT REPRESENT  
A BOUNDARY SURVEY

**RECEIVED**  
**MAR 29 2019**  
Franklin County Engineer  
Cornell R. Robertson, P.E., P.S.



**LEGEND**

--- PROPOSED CITY OF COLUMBUS CORPORATION LINE

— EXISTING CITY OF COLUMBUS CORPORATION LINE

▨ PROPOSED CITY OF COLUMBUS ANNEXATION

**ANNEXATION  
PLAT & DESCRIPTION  
ACCEPTABLE**  
CORNELL R. ROBERTSON, P.E., P.S.  
FRANKLIN COUNTY ENGINEER

By *CR* Date 3/29/19



CONTIGUITY NOTE

TOTAL PERIMETER OF ANNEXATION IS 989.85 FEET OF WHICH 480.69' IS CONTIGUOUS WITH THE CITY OF COLUMBUS, GIVING 50.6% PERIMETER CONTIGUITY

NOTE  
THIS ANNEXATION DOES NOT CREATE ISLAND OF UNINCORPORATED AREAS WITHIN THE LIMITS OF THE AREA TO BE ANNEXED

PREPARED BY *Ronald John Yarano* DATE 3/27/19