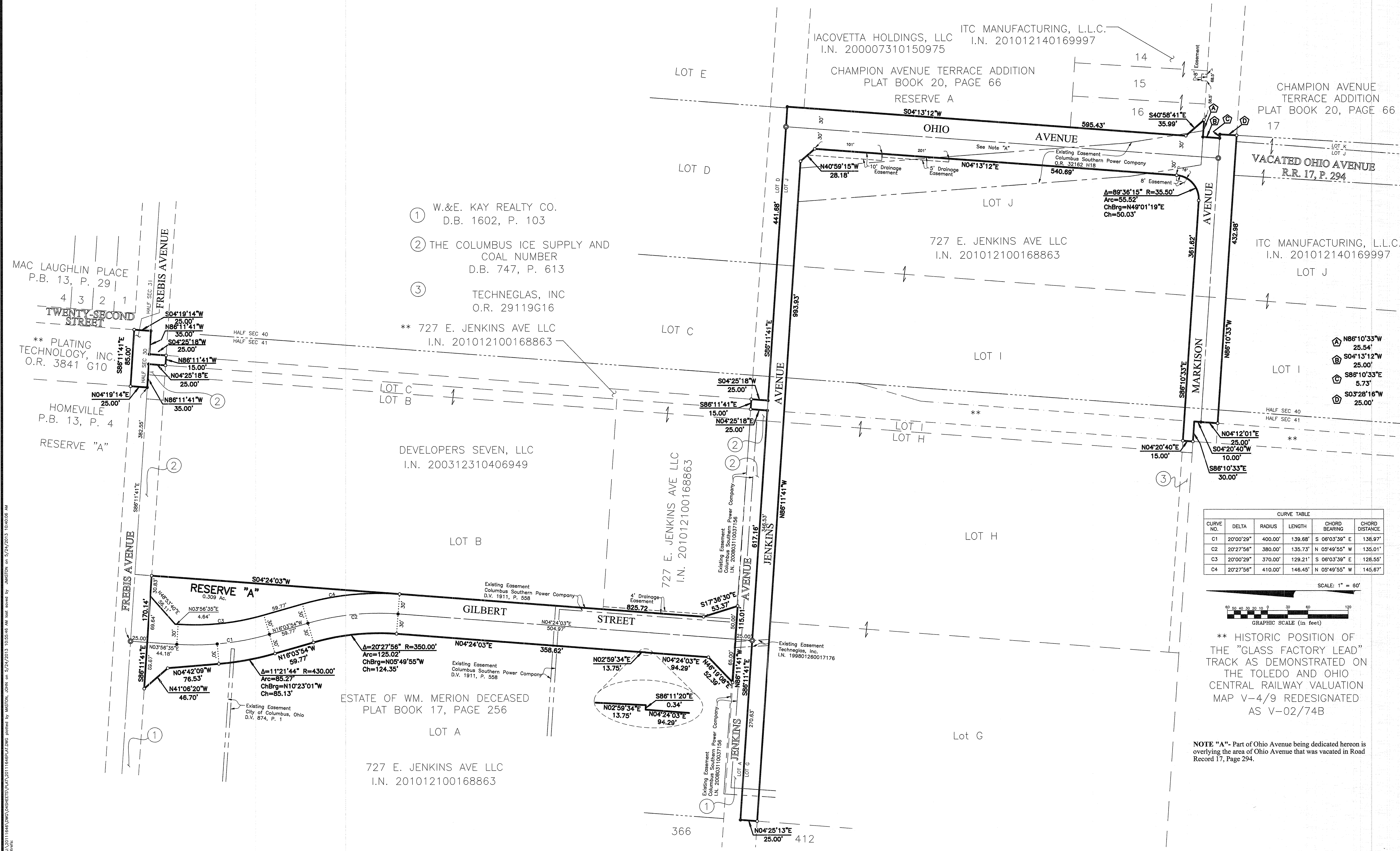


TECH CENTER SOUTH TECHNEGLAS



- ① W.&E. KAY REALTY CO.
D.B. 1602, P. 103
- ② THE COLUMBUS ICE SUPPLY AND
COAL NUMBER
D.B. 747, P. 613
- ③ TECHNEGLAS, INC
O.R. 29119G16

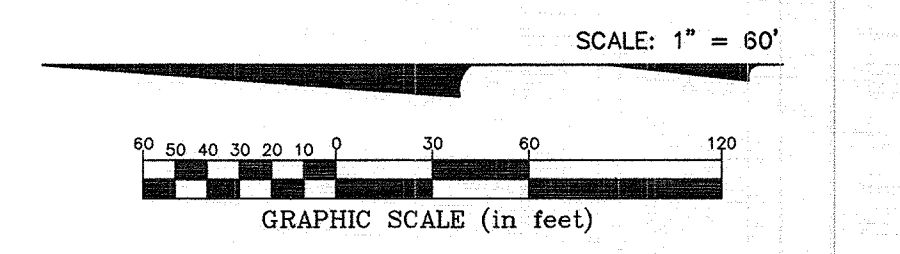
** 727 E. JENKINS AVE LLC
I.N. 201012100168863

DEVELOPERS SEVEN, LLC
I.N. 200312310406949

ESTATE OF WM. MERION DECEASED
PLAT BOOK 17, PAGE 256

727 E. JENKINS AVE LLC
I.N. 201012100168863

CURVE NO.	DELTA	RADIUS	LENGTH	CHORD BEARING	CHORD DISTANCE
C1	2°00'29"	400.00'	139.68'	S 06°03'39" E	138.97'
C2	2°27'56"	380.00'	135.73'	N 05°49'55" W	135.01'
C3	2°00'29"	370.00'	129.21'	S 06°03'39" E	128.55'
C4	2°27'56"	410.00'	148.45'	N 05°49'55" W	145.67'



** HISTORIC POSITION OF THE "GLASS FACTORY LEAD" TRACK AS DEMONSTRATED ON THE TOLEDO AND OHIO CENTRAL RAILWAY VALUATION MAP V-4/9 REDESIGNATED AS V-02/74B

NOTE "A"- Part of Ohio Avenue being dedicated hereon is overlying the area of Ohio Avenue that was vacated in Road Record 17, Page 294.

J:\20111646\DWG\CASHIERS\PART\20111646\PLAT.DWG plotted by JASTON, JOHN on 5/24/2013 10:55:46 AM Imit. saved by JASTON on 5/29/2013 10:40:08 AM Xref: