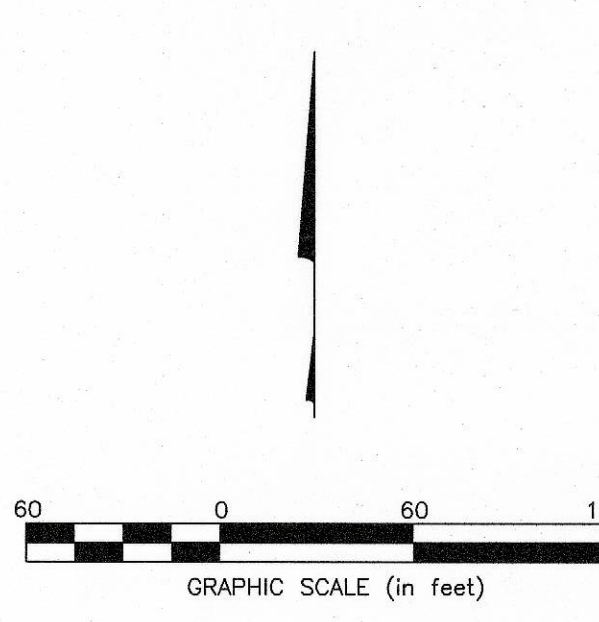
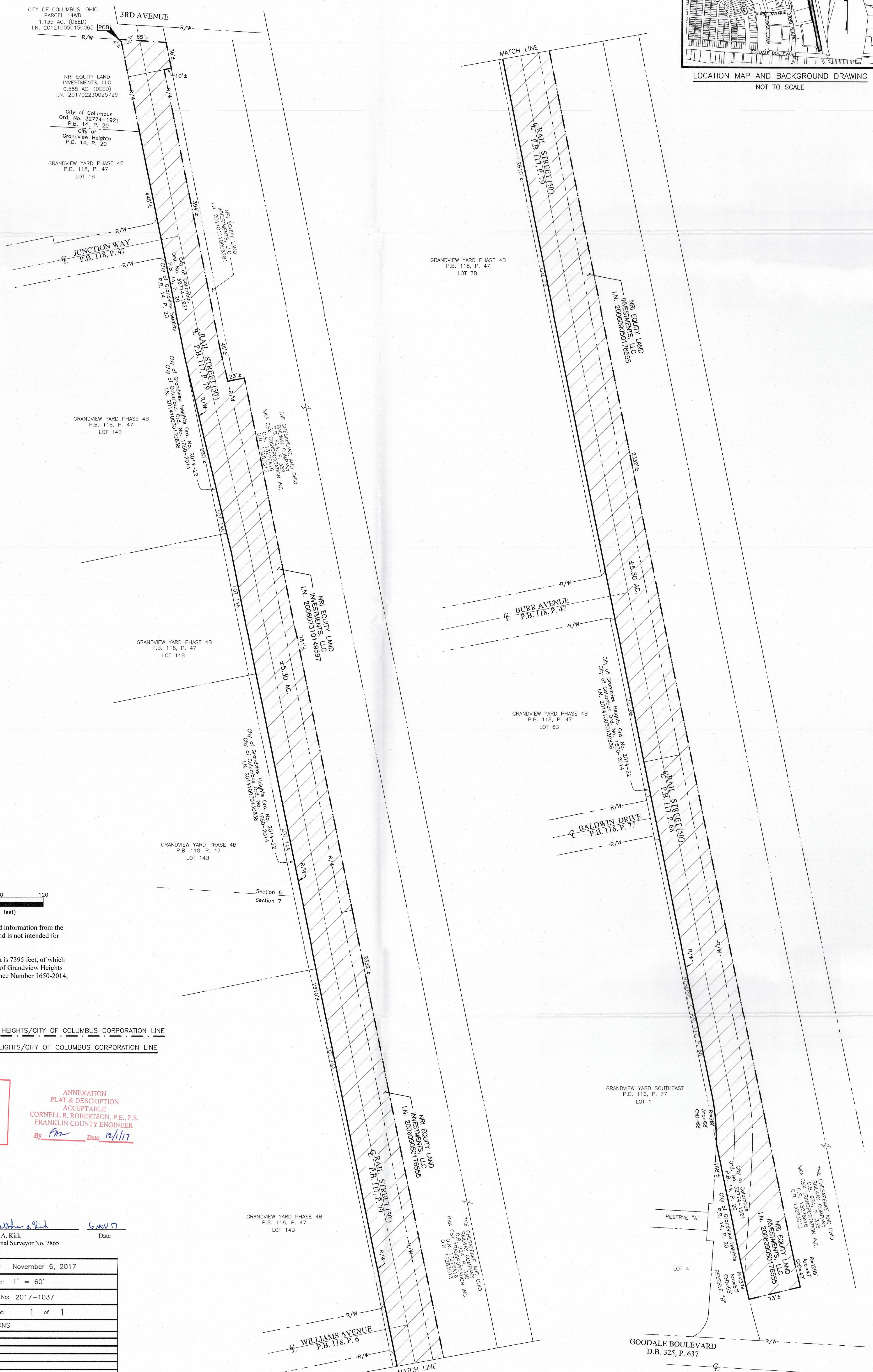
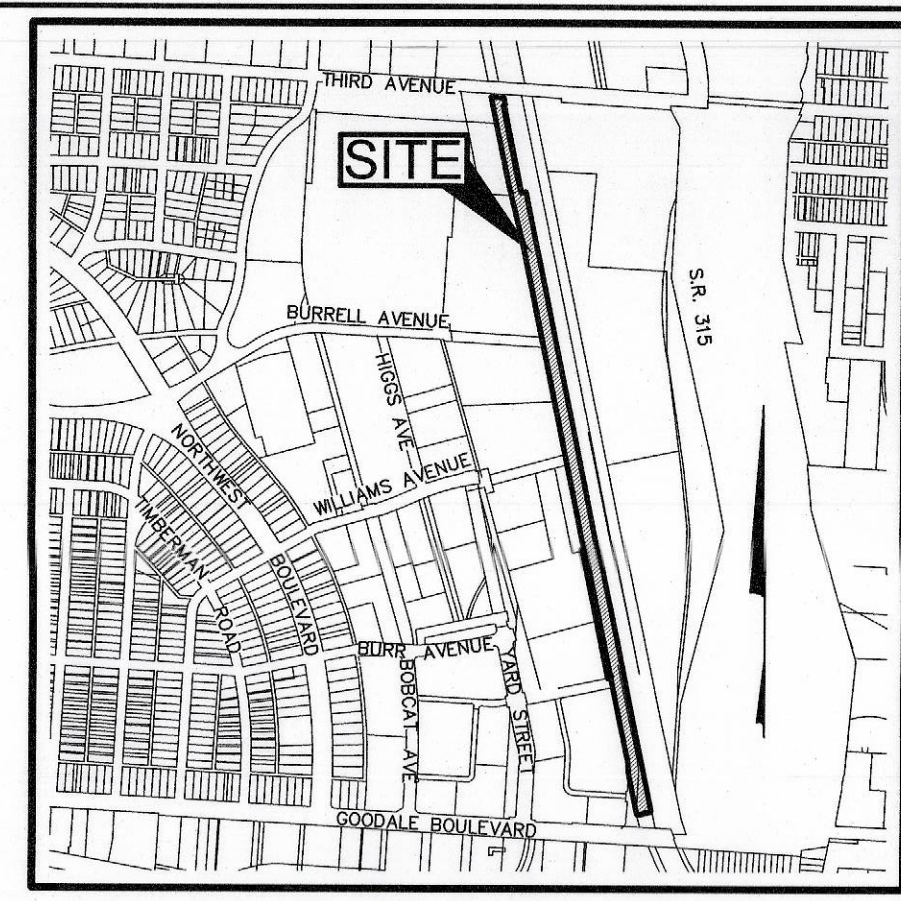


# BOUNDARY ADJUSTMENT OF ±5.30 ACRES

## FROM: THE CITY OF COLUMBUS

## TO: THE CITY OF GRANDVIEW HEIGHTS

SECTION 6 AND SECTION 7, TOWNSHIP 5, RANGE 22  
REFUGEE LANDS  
CITY OF COLUMBUS, COUNTY OF FRANKLIN, STATE OF OHIO



This exhibit was prepared from record information from the Franklin County Recorder's Office, and is not intended for the transfer of real property.

Total perimeter of the annexation area is 7395 feet, of which 3497 feet is contiguous with the City of Grandview Heights by Plat Book 14, Page 20 and Ordinance Number 1650-2014, giving 47% perimeter contiguity.

**AREA TO BE ANNEXED**

PROPOSED CITY OF GRANDVIEW HEIGHTS/CITY OF COLUMBUS CORPORATION LINE

EXISTING CITY OF GRANDVIEW HEIGHTS/CITY OF COLUMBUS CORPORATION LINE

RECEIVED

DEC 01 2017

Franklin County Engineer  
Cornell R. Robertson, P.E., P.S.

ANNEXATION  
PLAT & DESCRIPTION  
ACCEPTABLE

CORNELL R. ROBERTSON, P.E., P.S.  
FRANKLIN COUNTY ENGINEER

By *fm* Date *12/1/17*



By *Matthew A. Kirk* Date *12/1/17*  
Matthew A. Kirk  
Professional Surveyor No. 7865

<b>EMHT</b>		Date: November 6, 2017
Evans, Mechwart, Hambleton & Titon, Inc. Engineers • Surveyors • Planners • Scientists 5500 New Albany Road, Columbus, OH 43254 Phone: 614.775.4500 Toll Free: 888.775.3648		Scale: 1" = 60'
emht.com		Job No: 2017-1037
REVISIONS		Sheet: 1 of 1
MARK	DATE	DESCRIPTION