

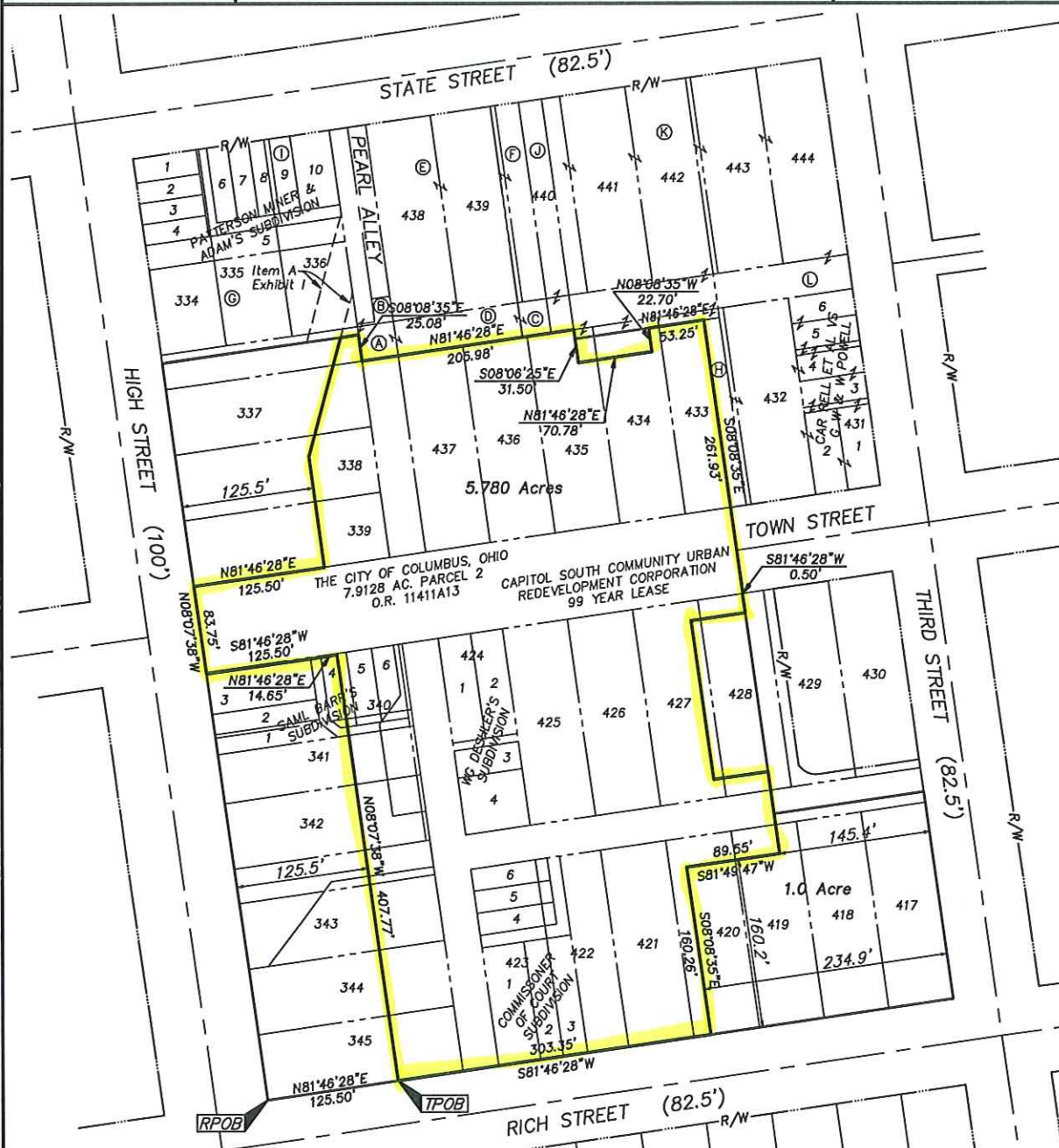
## CONSERVATION EASEMENT SECTION 16, TOWNSHIP 5, RANGE 27 REFUGEE LANDS CITY OF COLUMBUS, COUNTY OF FRANKLIN, STATE OF OHIO

Date: April 21, 2010

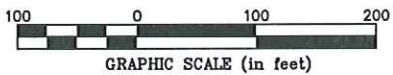
Scale: 1" = 100'

Job No: 2010-0488

C:\CH04\2010\PROJECT01\20090179\20090179SV\DWG\0179CE.DWG<11X17 PORTRAIT CANNOT> - NO XREFS - LAST SAVED BY MHANNING [4/22/2010 10:47:31 AM] - PLOTTED BY MHANNING [4/22/2010 10:06:23 PM]



- (A) THE COLUMBUS ASSOCIATION FOR THE PERFORMING ARTS  
1155 SQ. FT.  
O.R. 10687J07
- (B) THE COLUMBUS ASSOCIATION FOR THE PERFORMING ARTS  
455 SQ. FT.  
I.N. 200102090027116
- (C) THE COLUMBUS ASSOCIATION FOR THE PERFORMING ARTS  
1652 SQ. FT. (DEED)  
I.N. 200102090027116
- (D) THE COLUMBUS ASSOCIATION FOR THE PERFORMING ARTS  
3992 SQ. FT.  
O.R. 1825A03
- (E) THE COLUMBUS ASSOCIATION FOR THE PERFORMING ARTS  
PARCEL NO. 2  
D.B. 3008, P. 10
- (F) THE COLUMBUS ASSOCIATION FOR THE PERFORMING ARTS  
PARCEL NO. 1  
D.B. 3008, P. 10
- (G) 21 ESS, LLC  
0.6561 AC. FEE PARCEL "A"  
I.N. 200604260078768
- (H) HERTZ COLUMBUS ONE, LLC  
0.061 AC.  
I.N. 200708240149240
- (I) 21 ESS, LLC  
FEE PARCEL "B"  
I.N. 200604260078768
- (J) ESPLANADE DEDICATION  
O.R. 1487G06  
CITY OF COLUMBUS, OHIO  
99 YEAR LEASE  
O.R. 856E12
- (K) HERTZ COLUMBUS ONE, LLC  
0.734 AC.  
I.N. 200708240149240
- (L) HERTZ COLUMBUS TWO, LLC  
1.221 AC.  
I.N. 200709180164601



By \_\_\_\_\_  
 Professional Surveyor No. XXXX