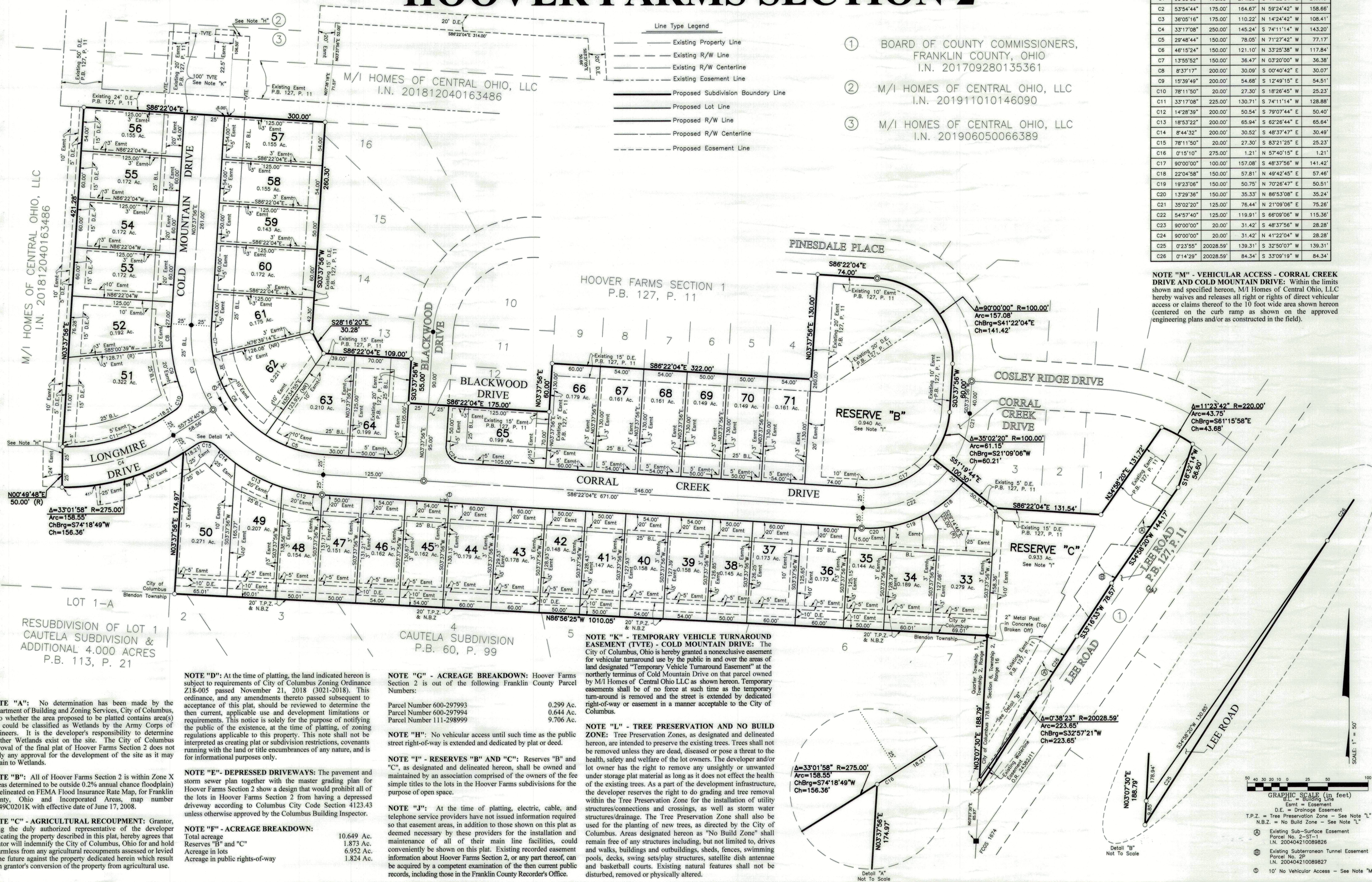


# HOOVER FARMS SECTION 2

2  
2



**NOTE "M" - VEHICULAR ACCESS - CORRAL CREEK DRIVE AND COLD MOUNTAIN DRIVE:** Within the limits shown and specified hereon, M/I Homes of Central Ohio, LLC hereby waives and releases all right or rights of direct vehicular access or claims thereof to the 10 foot wide area shown hereon (centered on the curb ramp as shown on the approved engineering plans and/or as constructed in the field).

