

## AN22-005

(26.78 ± acres in Prairie Township)

Status: Service Ordinance pending 4/18/2022 as emergency

Committee: Economic Development

## Legislation

1064-2022 Service Ordinance

## Principal Parties

Petitioners/Property Owners: Norfolk Southern Railway Co

Attorney/Agent: Craig Moncrief

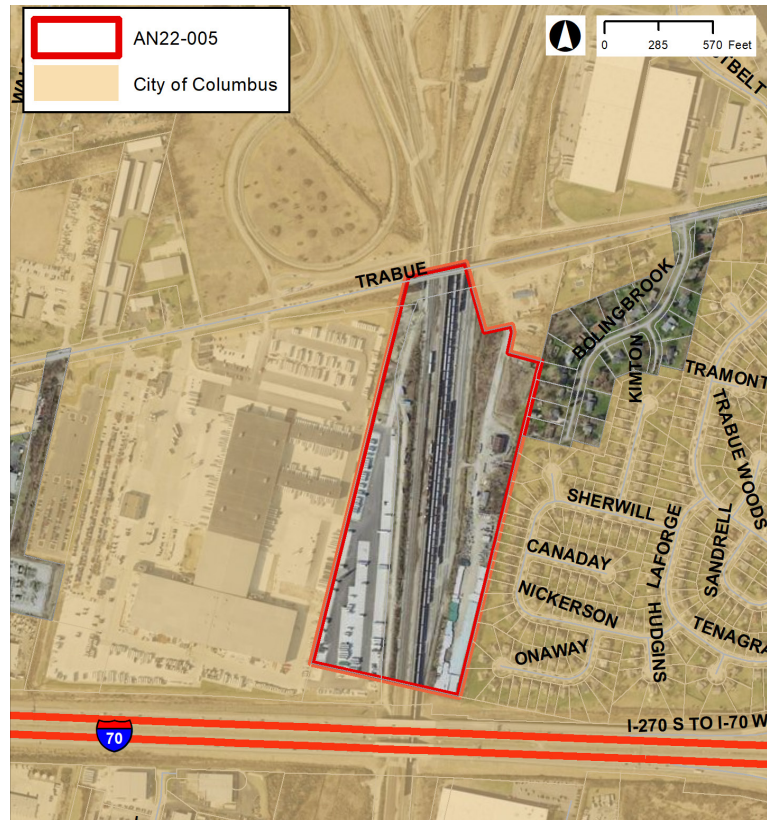
Developer: Xebec

Staff: Marc Rostan (process)

## Key Dates

County application date: 4/06/2022

Tentative County hearing: 5/03/2022



## Site Information

- The 22.8 ± acre site is an infill annexation.
- The current use is railroad. The anticipated use is railroad and industrial.
- The site is located within the boundaries of the Trabue-Roberts Plan, which recommends Light Industrial.
- The site is within the boundaries of the Far West Side Area Commission.
- The site does not require a boundary conformance.

## Key Issues

- Annexation is sought to obtain city services to facilitate future development of an industrial use with adjacent parcels to the north, already in the city.
- Planning staff have conducted a preliminary review and are supportive of the proposed use. It is consistent with the plan's recommendation.
- Annexation does not guarantee a zoning application will be approved. Zoning requests require a separate application process through the Department of Building and Zoning Services.

## Legislative Information

- The applicant must provide a statement of municipal services to the county for their consideration within 20 days.
- The annexation is tentatively scheduled for consideration at a Franklin County Commissioner hearing.
- The Ohio Revised Code stipulates that once an annexation has been approved by the county, it must be accepted by the receiving municipality in order for the annexation process to be completed. The acceptance process involves a second city ordinance that may be acted upon a minimum of 60 days from the date the City Clerk receives record of the commissioner's action and a maximum of 120 days of City Council's first consideration of the second city ordinance.