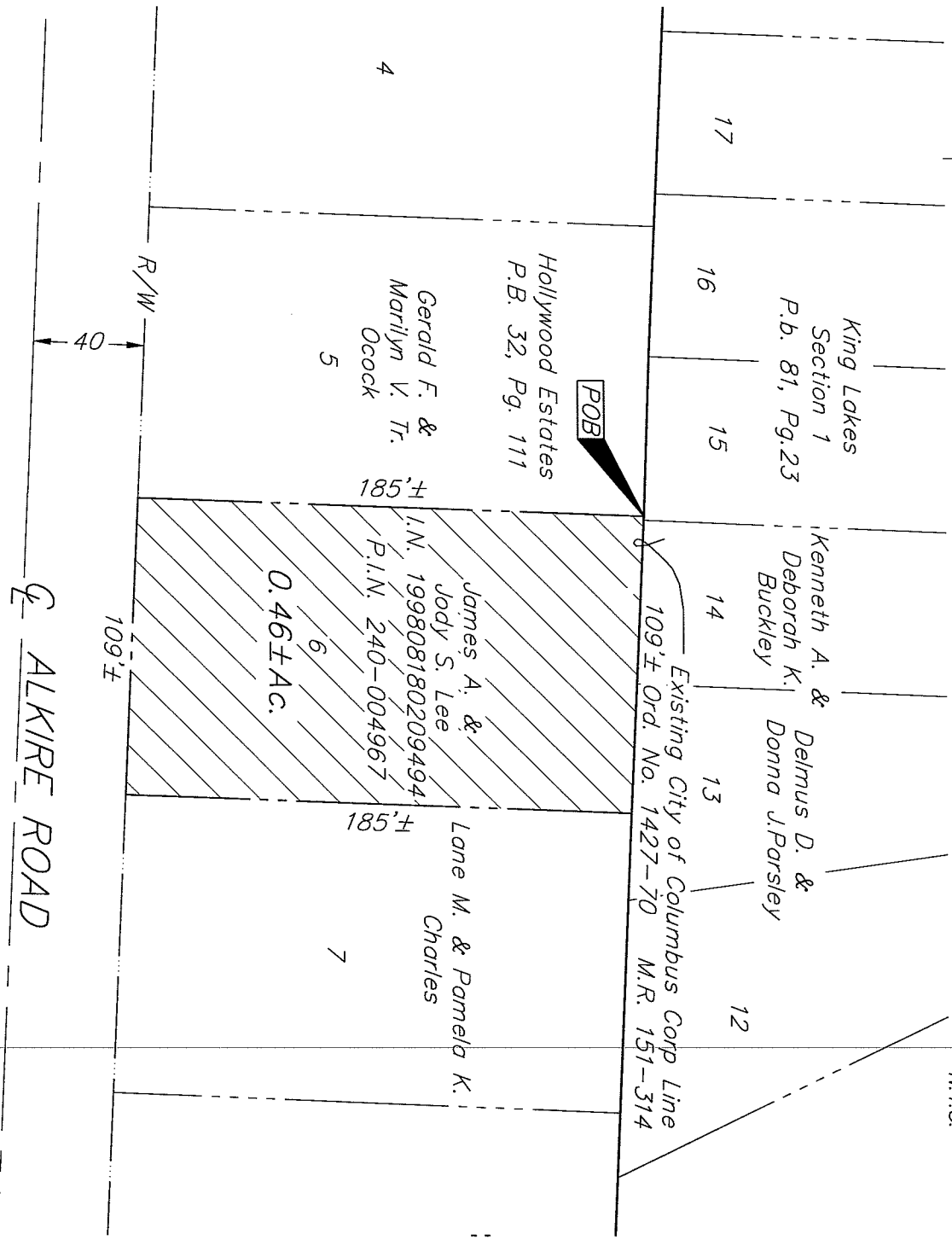
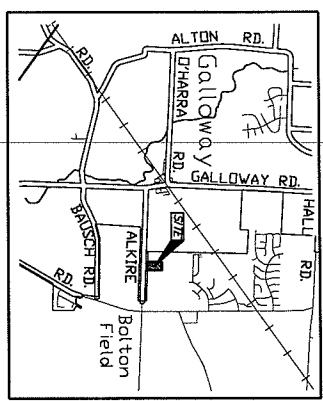


MMI & C INC.
 ENGINEERS, SURVEYORS, PLANNERS, SCIENTISTS
 EVANS, MECHWART, HAMBLETON & TILTON, INC.
 170 MILL STREET, GAHANNA, OHIO 43230-3038
 TEL: 614-471-5150 • FAX: 614-471-9286

ANNEXATION PLAT
 LOCATED IN
 VIRGINIA MILITARY SURVEY NUMBER 1473
 TOWNSHIP OF PRAIRIE, FRANKLIN COUNTY, OHIO

SCALE 1" = 60'

MARCH 13, 2003

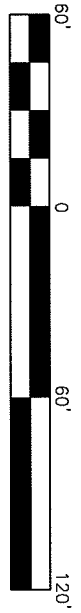


EXISTING CITY OF COLUMBUS CORP. LINE

PROPOSED CITY OF COLUMBUS CORP. LINE



ANNEX NO. _____ ORD NO. _____
 PROPOSED ANNEXATION OF 0.46± ACRES
 TO THE
 CITY OF COLUMBUS
 FROM
 PRAIRIE TOWNSHIP, FRANKLIN COUNTY, OHIO
 DATE MARCH 2003 SCALE 1" = 60



GRAPHIC SCALE
 (IN FEET)