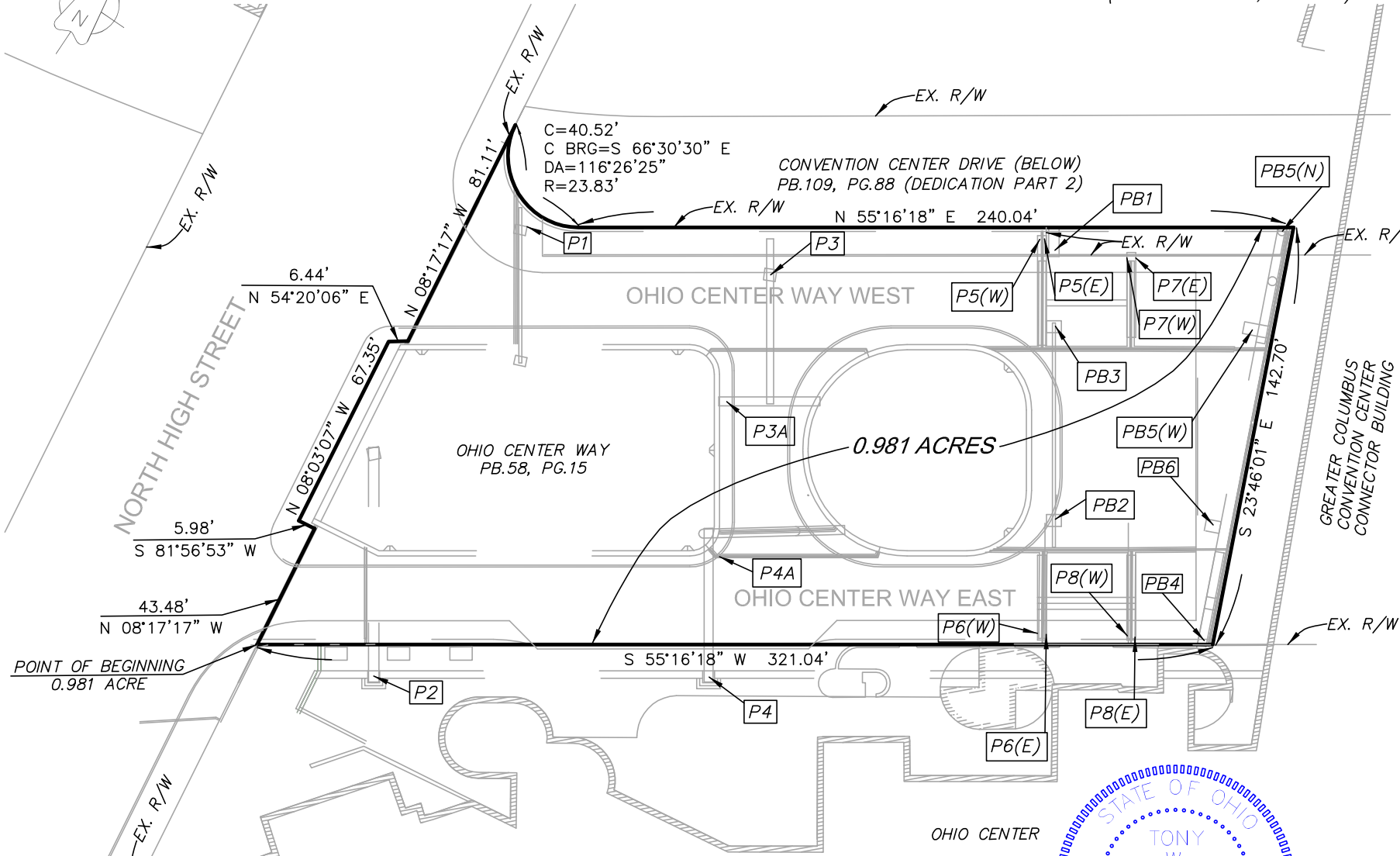


PLAT OF SURVEY

SITUATED IN THE STATE OF OHIO, COUNTY OF FRANKLIN, CITY OF COLUMBUS AND BEING LOCATED IN OHIO CENTER WAY (PLAT BOOK 58, PAGE 15) AND IN COLUMBUS CONVENTION CENTER DRIVE DEDICATION PLAT PART 2 (PLAT BOOK 109, PAGE 88).

Scale 1" = 50 feet



I.D. P=Pier (E)(N)(W)=East North or West	LOWER ELEV.	UPPER ELEV.	DESCRIPTION
P1	760.96'	815'	Bottom of superstructure beam*
P2	758.72'	815'	Bottom of superstructure beam*
P3	763.64'	815'	Top of steel cap
P3A	764.46'	815'	Top of concrete cap
P4A	765.07'	815'	Top of concrete cap
P4	762.93'	815'	Bottom of superstructure beam*
P5(W)	766.82'	815'	Top of concrete cap
P5(E)	770.06'	815'	Top of concrete cap
P6(W)	766.40'	815'	Top of concrete cap
P6(E)	770.18'	815'	Top of concrete cap
PB1	767.86'	815'	Top of concrete cap
PB3	762.76'	815'	Top of concrete column
PB2	762.94'	815'	Top of concrete column
P7(W)	770.86'	815'	Top of concrete cap
P7(E)	767.40'	815'	Top of concrete cap
P8(W)	770.65'	815'	Top of concrete cap
P8(E)	767.20'	815'	Top of concrete cap
PB4	767.97'	815'	Top of concrete cap
PB6	762.51'	815'	Top of concrete column
PB5(N)	769.31'	815'	Top of concrete cap
PB5(W)	762.85'	815'	Top of concrete column

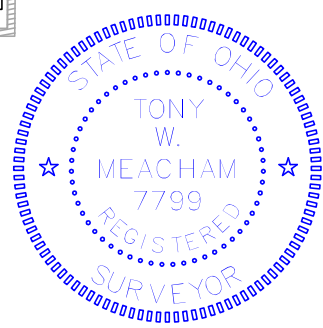
ELEVATIONS ARE BASED ON NAVD 1988 VERTICAL DATUM.
* = EXCLUDE STEEL PIER CAP.

CERTIFICATION:

I hereby certify that this plat is a true and correct representation of a survey performed under my responsible direction and supervision and is correct to the best of my knowledge.

Tony W. Meacham
REGISTERED SURVEYOR NO. 7799

12/9/2016
DATE



The bearings in this description are referenced to Ohio State Plan Coordinates, South Zone, NAD 83(2007) and based on the southerly existing right of way line of Ohio Center Way East being S 55° 16' 18" W.

HYATT HOTEL

KORDA
Korda/Nemeth Engineering, Inc - Consulting Engineers
1650 Watermark Drive, Suite 200 - Columbus, Ohio 43215-7010
TEL: 614-487-1650 FAX: 614-487-8981 WEB: www.korda.com