

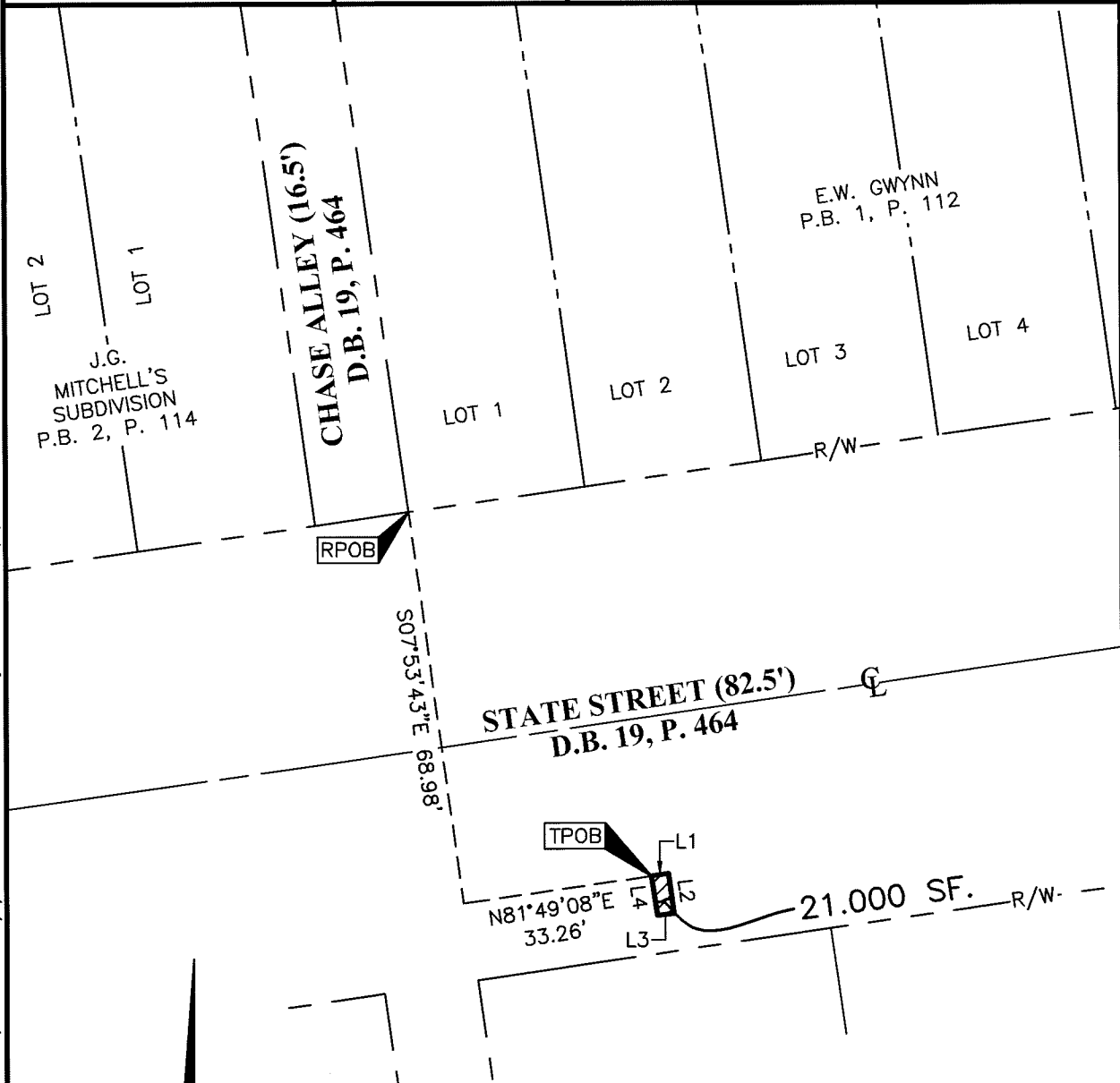


Evans, Mechwart, Hambleton & Tilton, Inc.
 Engineers • Surveyors • Planners • Scientists
 5500 New Albany Road, Columbus, OH 43054
 Phone: 614.775.4500 Toll Free: 888.775.3648
 emht.com

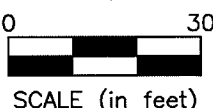
SIGN AND SIGN FOUNDATION ENCROACHMENT EASEMENT

BETWEEN 757.90' TO 771.90' ELEVATION (NAVD 88)
 LOCATED OVER THE RIGHT-OF-WAY OF STATE STREET
 CITY OF COLUMBUS, COUNTY OF FRANKLIN, STATE OF OHIO

Date: December 3, 2024 Scale: 1" = 30' Job No: 2022-0742 Sheet No: 1 of 1



BASIS OF VERTICAL DATUM:
 The Vertical Datum is based on the elevations established by the Franklin County Engineering Department at monument MORLAN, being 793.256 feet in elevation and at monument TACKETT, being 793.735 feet in elevation. The said elevations were transferred from said Franklin County Engineering Department monuments using static GPS procedures and the GEOID12B model to the site. The said monuments being source bench marks with elevations that are based on the North American Vertical Datum of 1988.



LINE TABLE		
LINE	BEARING	DISTANCE
L1	N81°49'08"E	3.00'
L2	S08°10'52"E	7.00'
L3	S81°49'08"W	3.00'
L4	N08°10'52"W	7.00'



By Heather L. King Date 12/5/24
 Heather L. King
 Professional Surveyor No. 8307
 hking@emht.com

J:\20220742\DWG\04SHEETS\EASEMENTS\20220742-VS-ESMT-ENCR-FNDN-04.DWG plotted by PHILPOTT, ANDREW on 12/4/2024 12:50:44 PM last saved by APHILPOTT on 12/4/2024 12:50:38 PM