

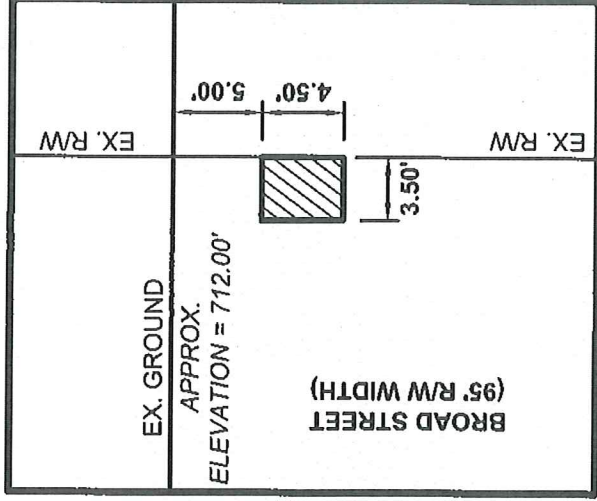
STATE OF OHIO, COUNTY OF FRANKLIN, CITY OF COLUMBUS VIRGINIA MILITARY SURVEY 1393

BASIS OF BEARINGS

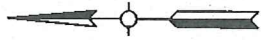
Bearings described hereon are measured from Grid North, referenced to the Ohio State Plane Coordinate System (South Zone) and the North American Datum of 1983 (2011 Adjustment), as established utilizing a GPS survey and an NGS OPUS solution.

BASIS OF ELEVATION

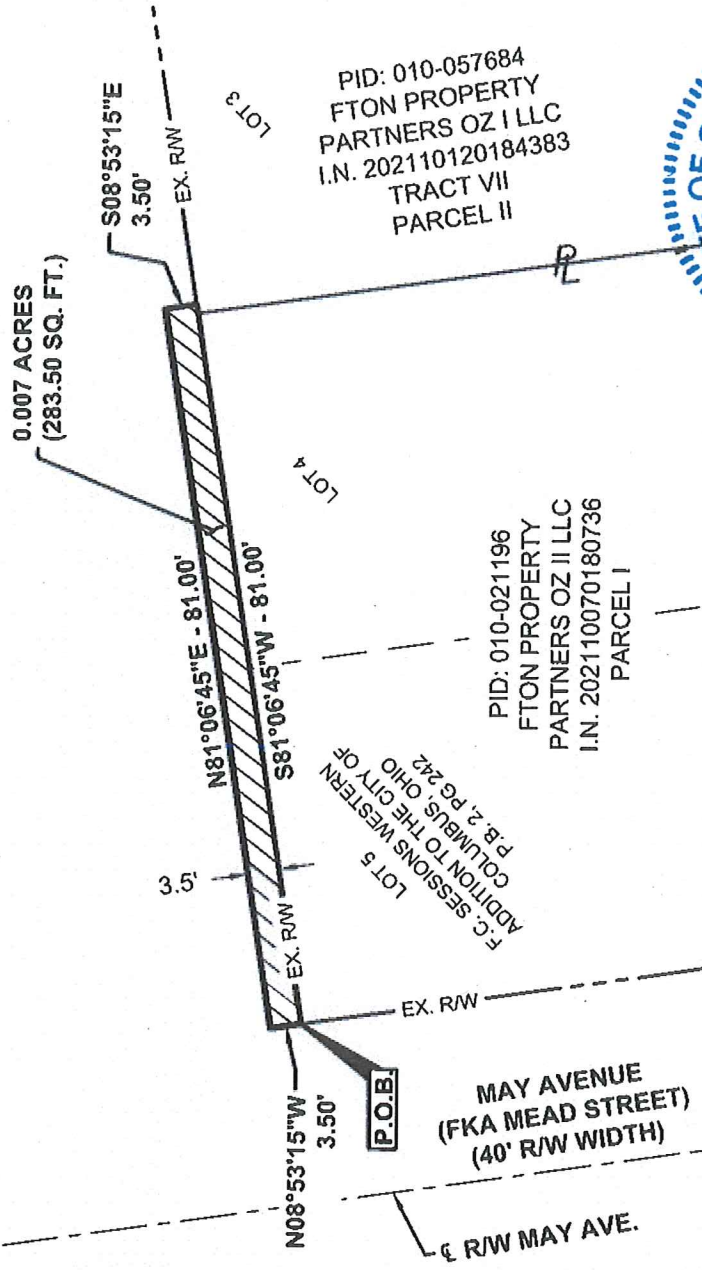
Elevations are referenced to the North American Vertical Datum of 1988, as established utilizing a level circuit originating on Franklin County Bench Mark 132 (Elevation: 718.721 feet).



VERTICAL DETAIL
(SCALE: 1" = 10')



EX. RW BROAD ST.
BROAD STREET
(95' R/W WIDTH)



This easement exhibit was prepared by Brian P. Bingham, Registered Professional Surveyor No. 8438, is based on an actual field survey performed by American Structurepoint, Inc., and is true and correct to the best of my knowledge and belief.

American Structurepoint, Inc.

Brian P. Bingham
Brian P. Bingham
Registered Professional Surveyor No. 8438
Date 8/23/2022

KAUFMAN DEVELOPMENT, LLC

AMERICAN STRUCTUREPOINT, INC.
2550 Corporate Exchange Drive | Suite 300
Columbus, Ohio 43221
TEL 614.991.2233 | FAX 614.991.2238
www.structurepoint.com

0.007 ACRE (283.50 SQ. FT.) FOOTER ENCROACHMENT EASEMENT FOR GRAVITY III
CITY OF COLUMBUS, FRANKLIN COUNTY, OHIO

DATE:	08/19/2022
DRAWN BY:	CRH & MWV
CHECKED BY:	BPB
JOB NUMBER:	2021.01992

1 of 1