

**TEMPORARY EASEMENT T-1**  
**1.777 ACRES**

Situated in the State of Ohio, County of Franklin, City of Columbus and located in Section 1, Township 2, Range 18, United States Military Lands, also being a part of 45.025 acres tract as described in a deed to Xenos Christian Fellowship, Inc. in Official Record 7732B17 on file in the Recorder's Office of Franklin County, Ohio and being particularly described as follows:

Beginning for reference at the southwest corner of Lot 29 as the same is numbered and delineated on the record plat "NORTH HOME ACRE PARK" of record in Plat Book 18, Page 20 and described in a deed to Richard E. Canaday and Norma F. Canaday of record in Official Record 32478G12 on file in the Recorder's Office of Franklin County, Ohio. Same being the southeast corner of the grantor's land and known as Lot 30 as numbered and delineated on said recorded plat "NORTH HOME ACRE PARK" and lies in the northerly right of way line of Community Park Drive;

Thence **S 86 degrees 48 minutes 36 seconds W** a distance of **35.64 feet** with the existing north of right of way line of Community Park Drive and the south line of said Lot 30 to the **TRUE POINT OF BEGINNING**;

Thence continue, **S 86 degrees 48 minutes 36 seconds W** a distance of **36.12 feet** with the existing north of right of way line of Community Park Drive and the south line of said Lot 30 to a point;

Thence crossing the Grantor's tract the following fifteen (15) courses and distances:

1 - **N 01 degrees 28 minutes 35 seconds E** a distance of **345.14 feet** to a point of curvature;

2 - Thence with the arc of a curve to the right, having as its elements a delta of 08°28'09" a radius of 1285.50 feet, an arc length of 190.01 feet, a **chord length of 189.84** and a **chord bearing of N 05 degrees 42 minutes 39 seconds E** to a point of tangency;

3 - **N 09 degrees 56 minutes 44 seconds E** a distance of **309.66 feet** to a point of curvature;

4 - Thence with the arc of a curve to the left, having as its elements a delta of 100°14'51" a radius of 274.00 feet, an arc length of 479.40 feet, a **chord length of 420.55** and a **chord bearing of N 40 degrees 10 minutes 42 seconds W** to a point of tangency;

5 - **S 89 degrees 41 minutes 53 seconds W** a distance of **62.17 feet** to a point;

6 - **N 00 degrees 27 minutes 54 seconds W** a distance of **300.91 feet** to a point;

7 - **N 89 degrees 32 minutes 06 seconds E** a distance of **419.56 feet** to a point;

8 - **S 00 degrees 27 minutes 54 seconds E** a distance of **50.00 feet** to a point;

9 - **S 89 degrees 32 minutes 06 seconds W** a distance of **394.56 feet** to a point;

10 - **S 00 degrees 27 minutes 54 seconds E** a distance of **190.05 feet** to a point of curvature;

11 - Thence with the arc of a curve to the left, having as its elements a delta of  $89^{\circ}50'13''$  a radius of 25.00 feet, an arc length of 39.20 feet, a **chord length of 35.31** and a **chord bearing of S 45 degrees 23 minutes 01 seconds E** to a point of tangency;

12 - **N 89 degrees 41 minutes 53 seconds E** a distance of **12.88 feet** to a point of curvature;

13 - Thence with the arc of a curve to the right, having as its elements a delta of  $100^{\circ}14'51''$  a radius of 310.00 feet, an arc length of 542.39 feet, a **chord length of 475.81** and a **chord bearing of S 40 degrees 10 minutes 42 seconds E** to a point of tangency;

14 - **S 09 degrees 56 minutes 44 seconds W** a distance of **309.66 feet** to a point of curvature;

15 - Thence with the arc of a curve to the left, having as its elements a delta of  $08^{\circ}28'09''$  a radius of 1249.50 feet, an arc length of 184.69 feet, a **chord length of 184.52** and a **chord bearing of S 05 degrees 42 minutes 39 seconds W** to a point of tangency;

Thence **S 01 degrees 28 minutes 35 seconds W** a distance of **342.20 feet** to the **TRUE POINT OF BEGINNING**, containing 1.777 acres of land, more or less.

The above described area contains a total of **1.777 acres**, within Franklin County Auditor's Parcel Number 010-231143, which includes 0.000 acres in the present road occupied.

Grantor claims title by Instrument recorded in Official Record 17732B17, in the records of Franklin County, Ohio.

Bearings used in this description are based on Ohio State Plane Coordinates, South Zone, NAD 83.

This description was prepared from record documents and does not represent a field survey.

Resource International, Inc.

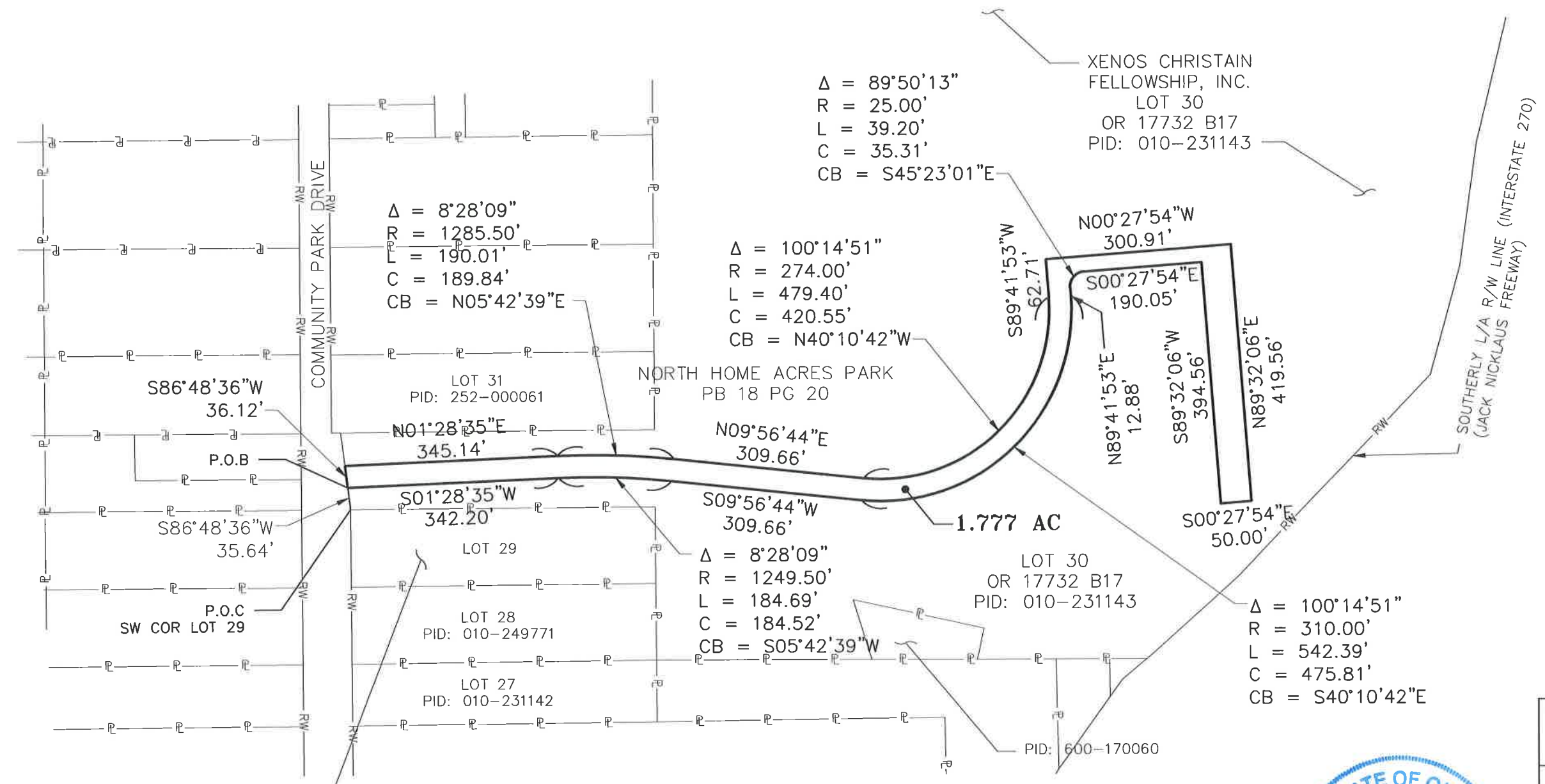
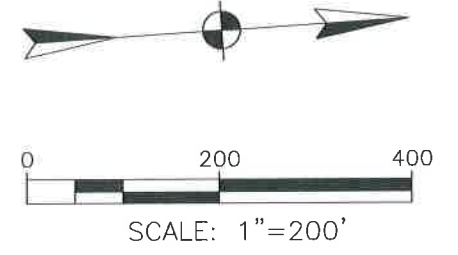
 9-13-13

Mark S. Ward, P.S.

Professional Surveyor No. S-7514



**PLAT OF 1.777 ACRES  
LOCATED IN  
SEC-1, TWP-2, R-18, USML  
CITY OF COLUMBUS  
FRANKLIN COUNTY, OHIO**



RICHARD E. CANADAY AND  
NORMA F. CANADAY  
1362 COMMUNITY PARK DR  
DB 2444 PG 79  
PID: 252-000059

**NOTE:**  
THIS PLAT PREPARED FROM RECORD DOCUMENTS.



PLATTED BY:  
RESOURCE INTERNATIONAL, INC.  
*Mark S. Ward* 9-13-13  
MARK S. WARD P.S. No., S-7514 DATE

DESCRIPTION				
<b>TEMPORARY EASEMENT T-1</b>				
LOCATION				
<b>1340 COMMUNITY PARK DR COLUMBUS, OH</b>				
CLIENT				
<b>CHESTER ENGINEERS 88 E BROAD STREET</b>				
 <b>RESOURCE INTERNATIONAL, INC. 6350 PRESIDENTIAL GATEWAY COLUMBUS, OHIO 43231</b>				
DRAWN BY:	CHECKED BY:	CREW CHIEF:	PROJECT No.	SHEET
<b>EJG</b>	<b>MSW</b>		<b>W09-124</b>	<b>1 OF 1</b>
SCALE:	DATE:			
	<b>7-23-13</b>			