



1400 Goodale Blvd
Suite 102
Columbus OH 43212
United States

(614) 430 0020
www.kbiinc.com

DATE: 10/2/2023

EXP DATE: 7/19/2024

SALES REP: Alexandra Rogers

Quote

QUOTE#: QU011432

OPP#: PUBLIC RECORDS_RM 457A
STATIONS

BILL TO:

COLUMBUS, CITY of, DIV. OF POLICE
120 MARCONI BLVD.
ROOM 737
COLUMBUS OH 43215
United States

INSTALL LOCATION:

COLUMBUS, CITY of, DIV. OF POLICE
120 MARCONI
COLUMBUS OH 43215
United States

QUOTE CONTACT: CU316 COLUMBUS, CITY of, DIV. OF POLICE : KATHRYN HARTSHORNE

External Memo:

LINE #	QTY	MFG CODE	PART #	DESCRIPTION	UNIT SELL	EXT SELL
SUBTOTAL By: "						
1	1	HAW	VZCE-0000-H	Compose, EOR, Steel Trim, clip, Pk of 5	\$24.86	\$24.86
2	1	HAW	VZCE-6600-H	Compose, Panel Trim, End-Of-Run 66In. H, Steel	\$36.38	\$36.38
			TR-R	Beige GRD A		
SUBTOTAL By: "						\$61.24
SUBTOTAL By: 'RM 457A'						
4	8	HAW	VZFF-6636-NNBBNR	Compose, Frm, 66Hx36W, Bs NoPwr, BsTrm/BsTrm, No Blt Pwr, Std	\$227.48	\$1,819.84
			TR-R	Beige GRD A		
			TR-R	Beige GRD A		
			TR-R	Beige GRD A		
5	16	HAW	VZAL-6600	Compose, Vertical Light Block, 66in	\$2.95	\$47.20
6	9	HAW	VZAL-3400	Compose, Vertical Light Block, 34in	\$2.36	\$21.24
7	16	HAW	VZTI-5636-FNC	Compose, Single Tile, 56In. HX36In. W, Fabric/Tackable, Std Core, No Tech	\$127.35	\$2,037.60
			(36)	Aerial GRD A		
			36-VS	Vista GRD A		
8	16	HAW	VZTI-5636-FNC	Compose, Single Tile, 56In. HX36In. W, Fabric/Tackable, Std Core, No Tech	\$127.35	\$2,037.60
			(36)	Aerial GRD A		
			36-VS	Vista GRD A		
9	8	HAW	VZFF-6618-NNBBNR	Compose, Frm, 66Hx18W, Bs NoPwr, BsTrm/BsTrm, No Blt Pwr, Std	\$201.41	\$1,611.28
			TR-R	Beige GRD A		
			TR-R	Beige GRD A		
			TR-R	Beige GRD A		



1400 Goodale Blvd
Suite 102
Columbus OH 43212
United States

(614) 430 0020
www.kbiinc.com

DATE: 10/2/2023

EXP DATE: 7/19/2024

SALES REP: Alexandra Rogers

Quote

QUOTE#: QU011432

OPP#: PUBLIC RECORDS_RM 457A
STATIONS

LINE #	QTY	MFG CODE	PART #	DESCRIPTION	UNIT SELL	EXT SELL
10	3	HAW	VZFF-3436-NNBBNR	Compose, Frm,34Hx36W,Bs NoPwr,BsTrm/BsTrm,No Blt Pwr,Std	\$201.38	\$604.14
				TR-R Beige GRD A		
				TR-R Beige GRD A		
				TR-R Beige GRD A		
11	6	HAW	VZTI-2436-FNN	Compose,Single Tile,24In.HX36In.W,Fabric/Tackable,Std Core,No Tech	\$66.64	\$399.84
				(36) Aerial GRD A		
				36-VS Vista GRD A		
12	15	HAW	VZFF-3436-N3HHNR	Compose, Frm,34Hx36W,Bs 3Cir,Bs Cvhl/Cvhl,No Blt Pwr,Std	\$294.12	\$4,411.80
				TR-R Beige GRD A		
				TR-R Beige GRD A		
				TR-R Beige GRD A		
13	18	HAW	VZTI-5624-FNN	Compose,Single Tile,56In.HX24In.W,Fabric/Tackable,Std Core,No Tech	\$101.83	\$1,832.94
				(36) Aerial GRD A		
				36-VS Vista GRD A		
14	9	HAW	VZFF-6624-NNBBNR	Compose, Frm,66Hx24W,Bs NoPwr,BsTrm/BsTrm,No Blt Pwr,Std	\$210.10	\$1,890.90
				TR-R Beige GRD A		
				TR-R Beige GRD A		
				TR-R Beige GRD A		
15	16	HAW	VZTI-5618-FNN	Compose,Single Tile,56In.HX18In.W,Fabric/Tackable,Std Core,No Tech	\$89.06	\$1,424.96
				(36) Aerial GRD A		
				36-VS Vista GRD A		
16	8	HAW	VZFF-6636-N3HHNR	Compose, Frm,66Hx36W,Bs 3Cir,Bs Cvhl/Cvhl,No Blt Pwr,Std	\$320.21	\$2,561.68
				TR-R Beige GRD A		
				TR-R Beige GRD A		
				TR-R Beige GRD A		
17	30	HAW	VZTI-2436-FNN	Compose,Single Tile,24In.HX36In.W,Fabric/Tackable,Std Core,No Tech	\$66.64	\$1,999.20
				(36) Aerial GRD A		
				36-VS Vista GRD A		
18	7	HAW	VZCI-6600-H	Compose,Connector Trim,Corner,2-Way 66In.H, Steel	\$129.19	\$904.33
				TR-R Beige GRD A		
				TR-R Beige GRD A		
19	8	HAW	VZVE-3200-H	Compose,Panel Trim,Variable,End-Of-Run 32In.H, Steel	\$25.07	\$200.56
				TR-R Beige GRD A		
20	2	HAW	VZCW-0000-P	Compose,Wall Mount,Fits All Heights	\$40.77	\$81.54



1400 Goodale Blvd
Suite 102
Columbus OH 43212
United States

(614) 430 0020
www.kbiinc.com

DATE: 10/2/2023

EXP DATE: 7/19/2024

SALES REP: Alexandra Rogers

Quote

QUOTE#: QU011432

OPP#: PUBLIC RECORDS_RM 457A
STATIONS

LINE #	QTY	MFG CODE	PART #	DESCRIPTION	UNIT SELL	EXT SELL
21	9	HAW	VZCE-6600-H	Compose,Panel Trim,End-Of-Run 66In.H, Steel	\$36.38	\$327.42
				TR-R Beige GRD A		
22	7	HAW	VZCT-3400-H	Compose,Connector Trim,Corner,3-Way 34In.H, Steel	\$92.81	\$649.87
				TR-R Beige GRD A		
				TR-R Beige GRD A		
23	2	HAW	VZCE-0000-H	Compose, EOR, Steel Trim, clip, Pk of 5	\$24.86	\$49.72
24	1	HAW	VZCE-3400-H	Compose,Panel Trim,End-Of-Run 34In.H, Steel	\$25.14	\$25.14
				TR-R Beige GRD A		
25	1	HAW	VZCL-3400-H	Compose,Connector Trim,Corner,2-Way 34In.H, Steel	\$110.94	\$110.94
				TR-R Beige GRD A		
				TR-R Beige GRD A		
26	7	HAW	VZCC-0000-H	Compose Top Cap, Steel Trim, Clip, Pk of 5	\$27.61	\$193.27
27	8	HAW	VZCC-0018-HS	Compose,Top Trim 18In.W,Std, Pnl Frame	\$21.65	\$173.20
				TR-R Beige GRD A		
28	1	HAW	VZCT-6600-H	Compose,Connector Trim,Corner,3-Way 66In.H, Steel	\$124.74	\$124.74
				TR-R Beige GRD A		
				TR-R Beige GRD A		
29	9	HAW	VZCC-0024-HS	Compose,Top Trim 24In.W,Std, Pnl Frame	\$24.00	\$216.00
				TR-R Beige GRD A		
30	34	HAW	VZCC-0036-HS	Compose,Top Trim 36In.W,Std, Pnl Frame	\$28.89	\$975.46
				TR-R Beige GRD A		
31	72	HAW	VZAR-0000	Elec Comp, Receptacle Blank Cover	\$2.96	\$213.12
				TR-R Beige GRD A		
32	2	HAW	VZEB-0000-3	Compose,Base Feed Module,3Cir,332	\$156.73	\$313.46
33	3	HAW	EUER-153P-GSOS	Triplex Receptacle,15 Amp, 332, CM	\$108.90	\$326.70
				TR-R Beige GRD A		
34	89	HAW	VZAD-0000-R	Elec Comp, Data Blank Cover	\$1.78	\$158.42
				TR-R Beige GRD A		
35	9	HAW	WUJR-3636-LJSAN44	Worksurface,Corner 90 Deg Wrap,36W,Lam,Edgeband,Std Core,Notched,24,24	\$274.72	\$2,472.48
				H-P4 Patterned Linen Flax GRD A		
				HP-P4 Patterned Linen Flax GRD A		



1400 Goodale Blvd
Suite 102
Columbus OH 43212
United States

(614) 430 0020
www.kbling.com

DATE: 10/2/2023

EXP DATE: 7/19/2024

SALES REP: Alexandra Rogers

Quote

QUOTE#: QU011432

OPP#: PUBLIC RECORDS_RM 457A
STATIONS

LINE #	QTY	MFG CODE	PART #	DESCRIPTION	UNIT SELL	EXT SELL
36	18	HAW	ZZBD-1600-PP	Compose, Cntlvr Brkt,16In.D,Bh	\$54.08	\$973.44
37	18	HAW	ZUBF-0000-PN	Flush Mount Plate	\$11.88	\$213.84
38	18	HAW	ZZBN-0000-PNJ	Panel-To-Ped Attachment Bracket ,BH,3mm Edgeband TR-R Beige GRD A	\$88.30	\$1,589.40
39	18	HAW	WURA-2436-LJSA	Worksurface, Rect.24Dx36W,Lam,Edgeband,Std Core,Notched H-P4 Patterned Linen Flax GRD A HP-P4 Patterned Linen Flax GRD A	\$146.83	\$2,643.84
40	9	HAW	UZSN-0836-PM	Compose,Shelf,Std Mount,36W TR-R Beige GRD A	\$132.44	\$1,191.96
41	3	HAW	JA24-6418-LS1R	X Series, Locker, 24Dx64Hx18W,Single LH,Ptd Frnt, Ellipse Pull,Ptd Top TR-R Beige GRD A TR-R Beige GRD A LR-BP Chrome GRD A	\$968.59	\$2,905.77
42	6	HAW	JA24-6418-RS1R	X Series, Locker, 24Dx64Hx18W,Single RH,Ptd Frnt, Ellipse Pull,Ptd Top TR-R Beige GRD A TR-R Beige GRD A LR-BP Chrome GRD A	\$968.59	\$5,811.54
43	9	HAW	JPAH-24-SJ	X Series,Pedestal,Attached,B/B/F,24"D,PtdDrwFrnt, Std Lkrl,J Pull TR-R Beige GRD A LR-BP Chrome GRD A	\$347.48	\$3,127.32
44	9	HAW	JPAJ-24-SJ	X Series,Pedestal,Attached,F/F,24"D,PtdDrwFrnt, Std Lkrl,J Pull TR-R Beige GRD A LR-BP Chrome GRD A	\$325.65	\$2,930.85
45	9	HAW	UZFS-1636-PMLS	Compose ,Upper Storage,36"W,Painted Front,Panel Mount,Slow Close,Locking TR-R Beige GRD A TR-R Beige GRD A LR-BP Chrome GRD A	\$579.30	\$5,213.70
46	9	HAW	LSET-4	HW,Lock Set, Keyed Alike,Lock Plug And Key, Qty Of 4 LX-BP Chrome GRD A	\$0.00	\$0.00

SUBTOTAL By: 'RM 457A'

\$56,818.05

SUBTOTAL By:
'SEATING'



1400 Goodale Blvd
Suite 102
Columbus OH 43212
United States

(614) 430 0020
www.kbing.com

DATE: 10/2/2023

EXP DATE: 7/19/2024

SALES REP: Alexandra Rogers

Quote

QUOTE#: QU011432

OPP#: PUBLIC RECORDS_RM 457A
STATIONS

LINE #	QTY	MFG CODE	PART #	DESCRIPTION	UNIT SELL	EXT SELL
48	9	ASG	84112-MF	You, Highback, Deluxe Synchro Tilt, Multi-Functional Arm	\$731.86	\$6,586.74
				<div> <div>OK</div> <div>Black</div> </div> <div> <div>-</div> <div>No Selection</div> </div> <div> <div>-</div> <div>Standard Base</div> </div> <div> <div>OHC</div> <div>OH Carpet Casters</div> </div> <div> <div>KD</div> <div>Knocked Down</div> </div> <div> <div>AS</div> <div>Allseating Standard</div> </div> <div> <div>(M3)</div> <div>M3 Mesh</div> </div> <div> <div>3EB</div> <div>Ebony</div> </div> <div> <div>FS</div> <div>Upholstered Full Seat 21"Wx20"D (Std)</div> </div> <div> <div>SS</div> <div>Seat Slider</div> </div> <div> <div>G1</div> <div>Grade 1</div> </div> <div> <div>(1)</div> <div>Oasis</div> </div> <div> <div>F-ONIGHT</div> <div>Night</div> </div> <div> <div>-</div> <div>No Selection</div> </div> <div> <div>BHA</div> <div>Back Height Adjustment</div> </div> <div> <div>AWK</div> <div>Adjustable Width Bracket Knob</div> </div>		

SUBTOTAL By: 'SEATING'

\$6,586.74

SUBTOTAL By:
'X_LABOR'

50	1	KBI	LABOR SF	DELIVER AND INSTALL DURING DAY HOURS-DOES NOT INCLUDE REMOVAL OF EXISTING	\$0.00	\$0.00
----	---	-----	----------	---	--------	--------

SUBTOTAL By: 'X_LABOR'

\$0.00

Subtotal:

\$63,466.03

Sales Tax:

\$0.00

TOTAL:

\$63,466.03

+ shelving quote
(\$1,555.20)
= \$65,021.23



1400 Goodale Blvd
Suite 102
Columbus OH 43212
United States

(614) 430 0020
www.kbiinc.com

KING BUSINESS INTERIORS, INC. TERMS & CONDITIONS

Order Acceptance: Every order requires an executed copy of these terms & conditions and a signed purchase order or signed acceptance on the King Business Interiors, Inc. quotation. All quotations are valid for 30 days.

Payment terms: A 50% deposit is required with all orders. Invoicing will occur upon receipt of product withholding the cost of installation. In the event product is held for delivery, storage will be free for 30 days then billed \$1.00 per square foot, per month after. A final invoice of all items; product and labor will be sent upon final delivery. All orders are subject to approval by King Business Interiors, Inc. Credit Department. Service charge of 1.5% per month applied to all past due invoices. We do accept credit cards (\$5,000 limit) and ACH payments. A 3% processing fee will be added to all invoices paid with a credit card.

Taxes: Appropriate sales tax will be applied to all orders unless a sales tax exemption form is provided. If we do not collect sales tax in your state, you may be obligated to self-report for use tax.

Changes & Cancellations: All products are custom ordered from our suppliers and cannot be returned or cancelled without the approval of King Business Interiors, Inc. management. If cancellation is approved by King Business Interiors, Inc. management, there will be a 30% restock charge.

Delivery & Installation: Regular delivery hours are 8:00 – 4:00 PM Monday through Friday. Weekend and overtime hours are available and will be quoted as needed. A customer representative with the ability to accept delivery must be present at time of delivery or installation to sign that material was received.

Job Site Conditions: Prior to delivery/installation the site needs to be clean, clear and free of construction debris or other items. Job site must have electrical power, elevator service and staging area to receive product.

Furniture Power Requirements: King Business Interiors, Inc. installers are not licensed electricians and thus by code cannot attach the furniture electrical base feeds to the building power source. Customer is responsible for providing an electrician to connect building power to the furniture being installed. All data & communication lines are to be handled directly by the customer. We can recommend a licensed electrician & low voltage wiring contractor for this project. All costs at the customers expense.

Invoice & Warehousing: Invoicing will occur the day your product is scheduled to deliver. If original delivery date is changed before scheduled day of delivery, King will store product for up to 30 days at no additional cost, but all product will be invoiced. If installers are turned away upon arrival to install site on day of scheduled delivery, customer will be responsible for the labor cost to return product to King warehouse or anywhere customer directs. All storage after 30 days will be billed at \$1.00 per square foot per month or pro-rated daily.

08/01/2023

Approved By: _____
Name

Title

Date: _____

PO: _____



1400 Goodale Blvd
Suite 102
Columbus OH 43212
United States

(614) 430 0020
www.kbiinc.com

DATE: 12/20/2023

EXP DATE: 7/19/2024

SALES REP: Alexandra Rogers

Quote

QUOTE#: QU012710

OPP#: 4TH FLR_PUBLIC
RECORDS_LOCKER SHELVES

BILL TO:

COLUMBUS, CITY of, DIV. OF POLICE
120 MARCONI BLVD.
ROOM 737
COLUMBUS OH 43215
United States

INSTALL LOCATION:

COLUMBUS, CITY of, DIV. OF POLICE
120 MARCONI
COLUMBUS OH 43215
United States

QUOTE CONTACT: CU316 COLUMBUS, CITY of, DIV. OF POLICE : KATHRYN HARTSHORNE

External Memo:

LINE #	QTY	MFG CODE	PART #	DESCRIPTION	UNIT SELL	EXT SELL
1	12	HAW	JAS-2412-S	Shelf, 24D x 12W, Ptd, Locker, X Series TR-R Beige GRD A	\$37.84	\$454.08
2	18	HAW	JAS-2412-S	Shelf, 24D x 12W, Ptd, Locker, X Series TR-R Beige GRD A	\$37.84	\$681.12
3	1	KBI	LABOR SF	LABOR TO DELIVER AND INSTALL (30) EXTRA LOCKER SHELVES - TO BE COMPLETED WITH STATION INSTALL FOR 4TH FLR PUBLIC RECORDS	\$420.00	\$420.00

Subtotal: \$1,555.20

Sales Tax: \$0.00

TOTAL: \$1,555.20



1400 Goodale Blvd
Suite 102
Columbus OH 43212
United States

(614) 430 0020
www.kbjinc.com

KING BUSINESS INTERIORS, INC. TERMS & CONDITIONS

Order Acceptance: Every order requires an executed copy of these terms & conditions and a signed purchase order or signed acceptance on the King Business Interiors, Inc. quotation. All quotations are valid for 30 days.

Payment terms: A 50% deposit is required with all orders. Invoicing will occur upon receipt of product withholding the cost of installation. In the event product is held for delivery, storage will be free for 30 days then billed \$1.00 per square foot, per month after. A final invoice of all items; product and labor will be sent upon final delivery. All orders are subject to approval by King Business Interiors, Inc. Credit Department. Service charge of 1.5% per month applied to all past due invoices. We do accept credit cards (\$5,000 limit) and ACH payments. A 3% processing fee will be added to all invoices paid with a credit card.

Taxes: Appropriate sales tax will be applied to all orders unless a sales tax exemption form is provided. If we do not collect sales tax in your state, you may be obligated to self-report for use tax.

Changes & Cancellations: All products are custom ordered from our suppliers and cannot be returned or cancelled without the approval of King Business Interiors, Inc. management. If cancellation is approved by King Business Interiors, Inc. management, there will be a 30% restock charge.

Delivery & Installation: Regular delivery hours are 8:00 – 4:00 PM Monday through Friday. Weekend and overtime hours are available and will be quoted as needed. A customer representative with the ability to accept delivery must be present at time of delivery or installation to sign that material was received.

Job Site Conditions: Prior to delivery/installation the site needs to be clean, clear and free of construction debris or other items. Job site must have electrical power, elevator service and staging area to receive product.

Furniture Power Requirements: King Business Interiors, Inc. installers are not licensed electricians and thus by code cannot attach the furniture electrical base feeds to the building power source. Customer is responsible for providing an electrician to connect building power to the furniture being installed. All data & communication lines are to be handled directly by the customer. We can recommend a licensed electrician & low voltage wiring contractor for this project. All costs at the customers expense.

Invoice & Warehousing: Invoicing will occur the day your product is scheduled to deliver. If original delivery date is changed before scheduled day of delivery, King will store product for up to 30 days at no additional cost, but all product will be invoiced. If installers are turned away upon arrival to install site on day of scheduled delivery, customer will be responsible for the labor cost to return product to King warehouse or anywhere customer directs. All storage after 30 days will be billed at \$1.00 per square foot per month or pro-rated daily.

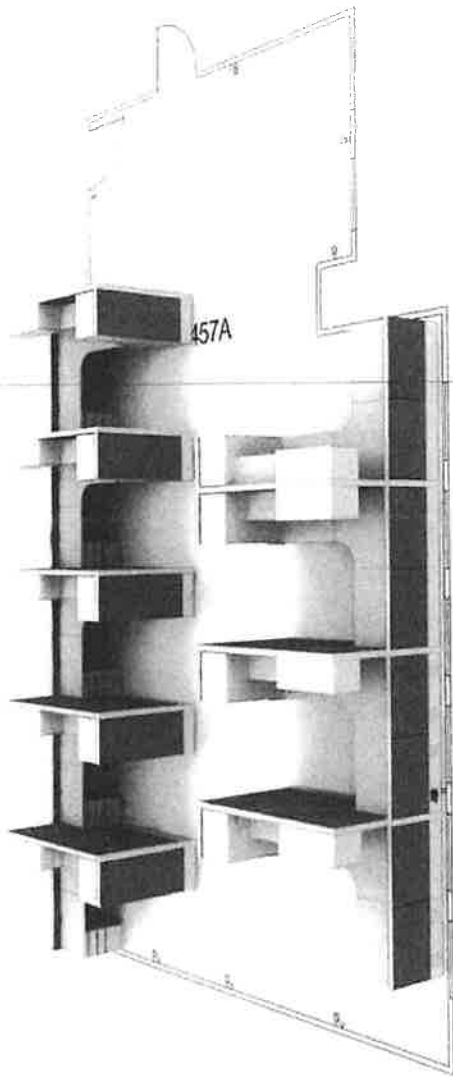
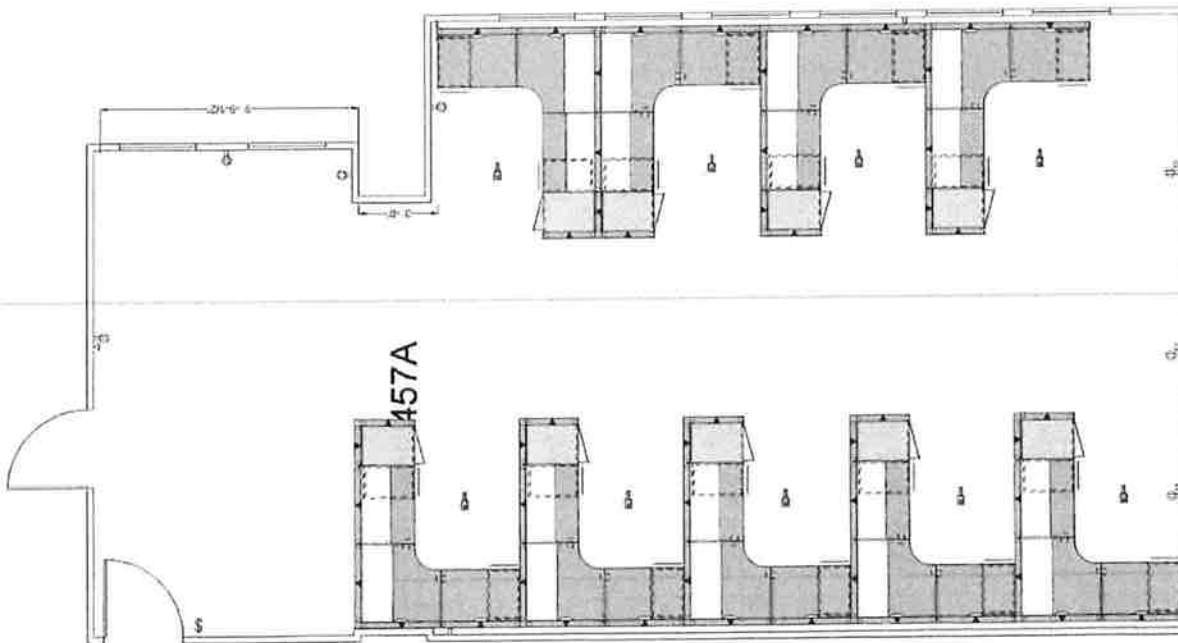
08/01/2023

Approved By: _____
Name

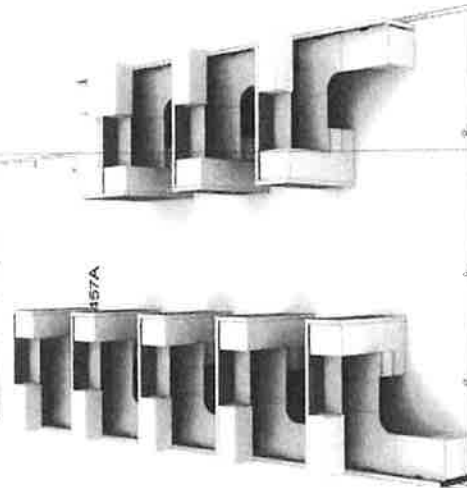
Title

Date: _____

PO: _____



EACH WORKSTATION HAS 2
TRIPLEXES - TOTALING 6
OUTLETS



business interiors	REV DATE	REVISION NOTES	PROJECT NO	DATE	SCALE	DESIGNER
King			CITY OF COLUMBUS DIVISION OF POLICE	3/27/2023	1/8" = 1'-0"	DAK
180 GOSWALE BLVD. SUITE 102 COLUMBUS, OHIO 43222 TEL: 614-460-0000 FAX: 614-460-0002			120 MARGONI BLVD. 4TH FLOOR PUBLIC RECORDS			
						SHEET
						MT