

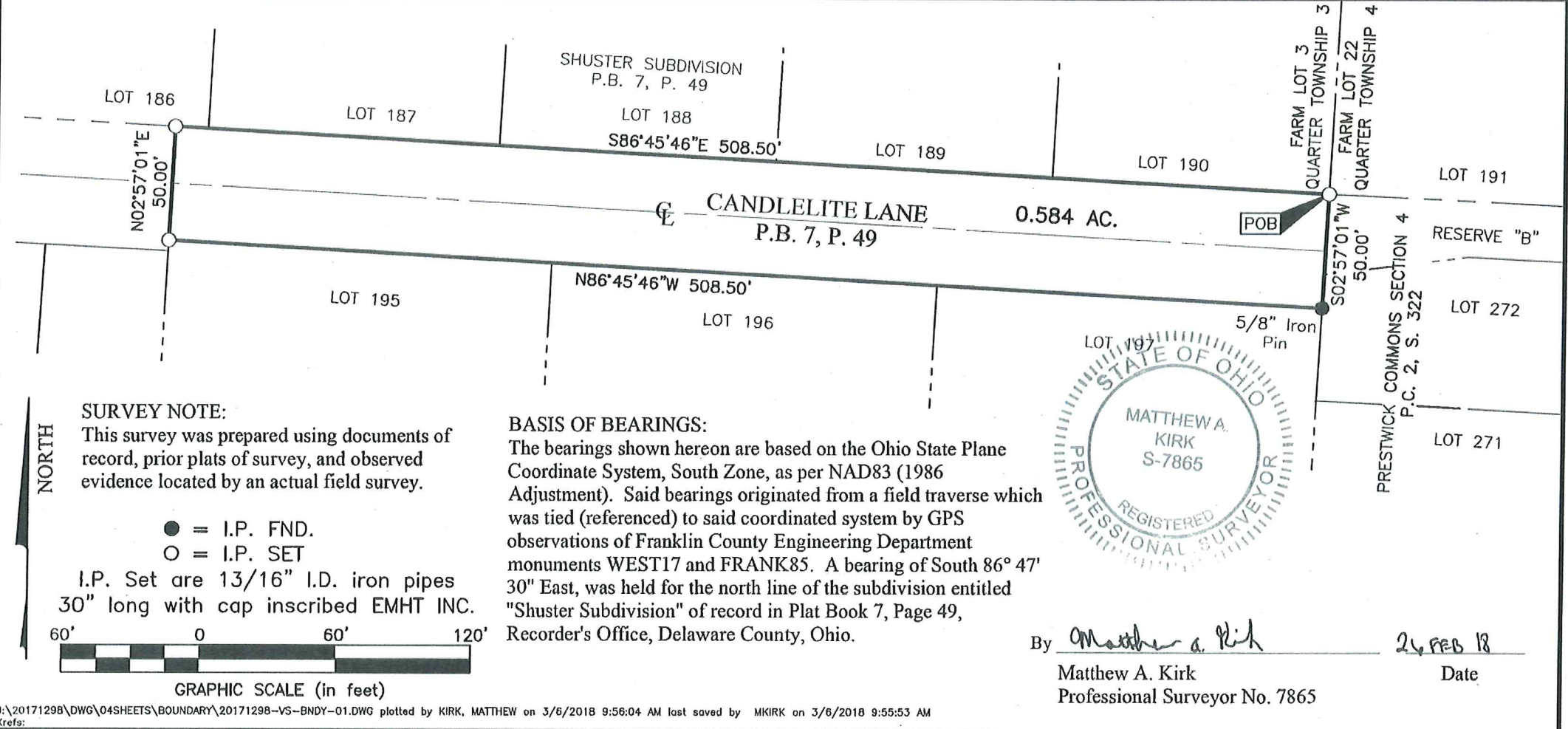


Evans, Mechwart, Hambleton & Tilton, Inc.
 Engineers • Surveyors • Planners • Scientists
 5500 New Albany Road, Columbus, OH 43054
 Phone: 614.775.4500 Toll Free: 888.775.3648
 emht.com

RIGHT-OF-WAY VACATION

FARM LOT 3, QUARTER TOWNSHIP 3, TOWNSHIP 3, RANGE 18
UNITED STATES MILITARY LANDS
CITY OF COLUMBUS, COUNTY OF DELAWARE, STATE OF OHIO

Date: February 26, 2018
 Scale: 1" = 60'
 Job No: 2017-1298



SURVEY NOTE:
 This survey was prepared using documents of record, prior plats of survey, and observed evidence located by an actual field survey.

- = I.P. FND.
 - = I.P. SET
- I.P. Set are 13/16" I.D. iron pipes
 30" long with cap inscribed EMHT INC.



BASIS OF BEARINGS:
 The bearings shown hereon are based on the Ohio State Plane Coordinate System, South Zone, as per NAD83 (1986 Adjustment). Said bearings originated from a field traverse which was tied (referenced) to said coordinated system by GPS observations of Franklin County Engineering Department monuments WEST17 and FRANK85. A bearing of South 86° 47' 30" East, was held for the north line of the subdivision entitled "Shuster Subdivision" of record in Plat Book 7, Page 49, Recorder's Office, Delaware County, Ohio.



By Matthew A. Kirk Date 26 FEB 18
 Matthew A. Kirk
 Professional Surveyor No. 7865

J:\20171298\DWG\04SHEETS\BOUNDARY\20171298-VS-BNDY-01.DWG plotted by KIRK, MATTHEW on 3/6/2018 9:56:04 AM last saved by MKIRK on 3/6/2018 9:55:53 AM
 Xrefs: