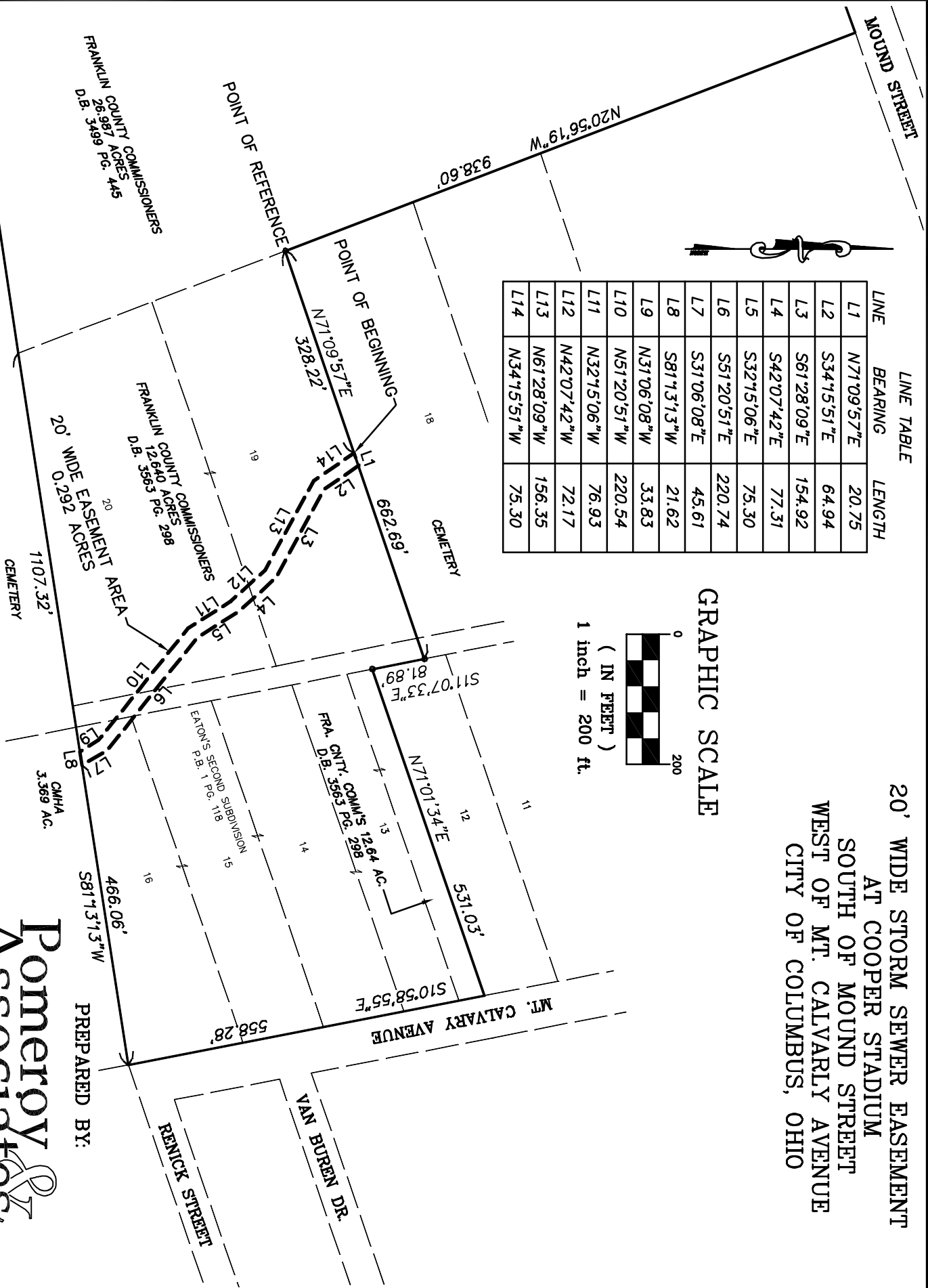


**20' WIDE STORM SEWER EASEMENT
AT COOPER STADIUM
SOUTH OF MOUND STREET
WEST OF MT. CALVARY AVENUE
CITY OF COLUMBUS, OHIO**

LINE	BEARING	LENGTH
L1	N71°09'57"E	20.75
L2	S34°15'51"E	64.94
L3	S61°28'09"E	154.92
L4	S42°07'42"E	77.31
L5	S32°15'06"E	75.30
L6	S51°20'51"E	220.74
L7	S31°06'08"E	45.61
L8	S81°13'13"W	21.62
L9	N31°06'08"W	33.83
L10	N51°20'51"W	220.54
L11	N32°15'06"W	76.93
L12	N42°07'42"W	72.17
L13	N61°28'09"W	156.35
L14	N34°15'51"W	75.30



WE HEREBY CERTIFY THAT THIS EASEMENT EXHIBIT WAS PREPARED FROM FIELD MEASUREMENTS. FOR THE PURPOSE OF THIS EXHIBIT, A BEARING OF NORTH 71°09'57" EAST WAS USED FOR THE NORTH LINE OF THE 12.64 ACRE TRACT AS SHOWN ON AN ALTA/ACSM SURVEY BY THE FRANKLIN COUNTY ENGINEER DATED JUNE 19, 2008.

PREPARED BY:

**Pomeroy
Associates**
Ltd.

Consulting Engineers & Surveyors
599 Scherers Court • Worthington, Ohio 43085
Phone(614)885-2498 • Fax(614)885-2886