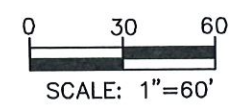


PROPOSED ANNEXATION OF 1.075+/- ACRE
FROM PLAIN TOWNSHIP
TO THE CITY OF COLUMBUS



THIS EXHIBIT DOES NOT REPRESENT
A BOUNDARY SURVEY

Andrew Reserve
Investment
Condominium
CPB 302 Pg 578

HAMILTON ROAD AND ROCKY
KNOLL DRIVE DEDICATION
PB 125 PG 40
HAMILTON ROAD
120' R/W

SITUATED IN:
HALF SEC 12, S. 6, QTR T. 2, T. 2, R 16,
U.S.M.L.
PLAIN TOWNSHIP
FRANKLIN COUNTY, OHIO

Reserve "E" CROSSINGS AT ROCKY
FORK SEC. 2
CITY OF COLUMBUS PB 126 PG 79
PLAIN TOWNSHIP

Ordinance Number
2647-96
O.R.34003 C15

CONTIGUITY NOTE

TOTAL PERIMETER OF ANNEXATION IS 865.85 FEET OF WHICH 427.72' IS
CONTIGUOUS WITH THE CITY OF COLUMBUS, RESULTING 49% PERIMETER
CONTIGUITY

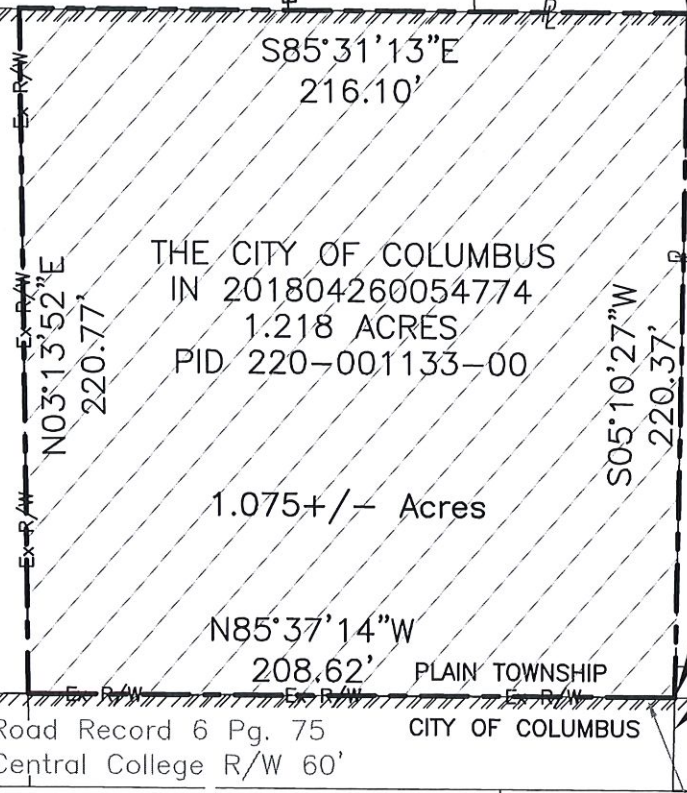
NOTE

THIS ANNEXATION DOES NOT CREATE AN ISLAND OF UNINCORPORATED
AREAS WITHIN THE LIMITS OF THE AREA TO BE ANNEXED

RESUBDIVISION OF A
PART OF JO-EL ACRES
PB 120 PG 32

ROCK REALTY LLC.
IN 201801020000503
0.58 ACRES
PID 220-001101-00

JO-EL Drive
60' R/W



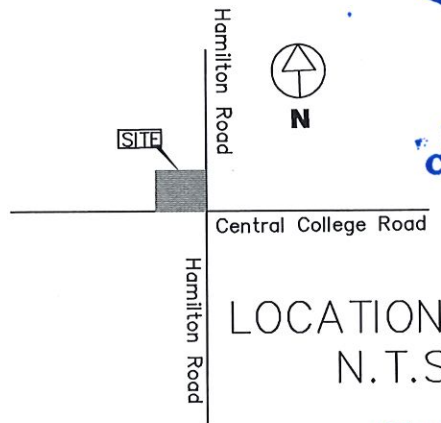
James H. Horne
Anna C. Horne
D.B. 3685 pg. 121
1.298 ACRES
PID 220-001217-00

WILHEMIA DR.
60' R/W

RECEIVED

AUG 08 2023

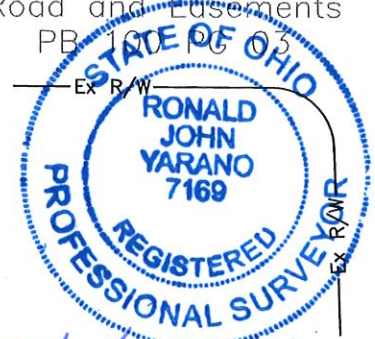
Franklin County Engineer
Cornell R. Robertson, P.E., P.S.



LOCATION MAP
N.T.S.

ANNEXATION
PLAT & DESCRIPTION
ACCEPTABLE
CORNELL R. ROBERTSON, P.E., P.S.
FRANKLIN COUNTY ENGINEER

By CR Date 08/08/2023



PREPARED BY Ronald John Yarano DATE 8/13/2023
Ronald John Yarano P.S. 7169

CENTRAL COLLEGE ROAD

Ordinance Number
0006-04
I.N. 200403110053675

LEGEND

	PROPOSED CITY OF COLUMBUS CORPORATION LINE
	EXISTING CITY OF COLUMBUS CORPORATION LINE
	PROPOSED CITY OF COLUMBUS ANNEXATION

HAMILTON ROAD
100' R/W

Dedication Plat of Hamilton
Road and Easements
PB 120 PG 32

30' R/W
Road Record 6 Pg. 75
Central College R/W 60'

40' R/W
40' Highway Easement
D.B.2903 Pg. 342

N85°37'14"W
207.60'
FCGS 8823
50' R/W

N05°10'27"E
30.00"

TPOB

RPOB