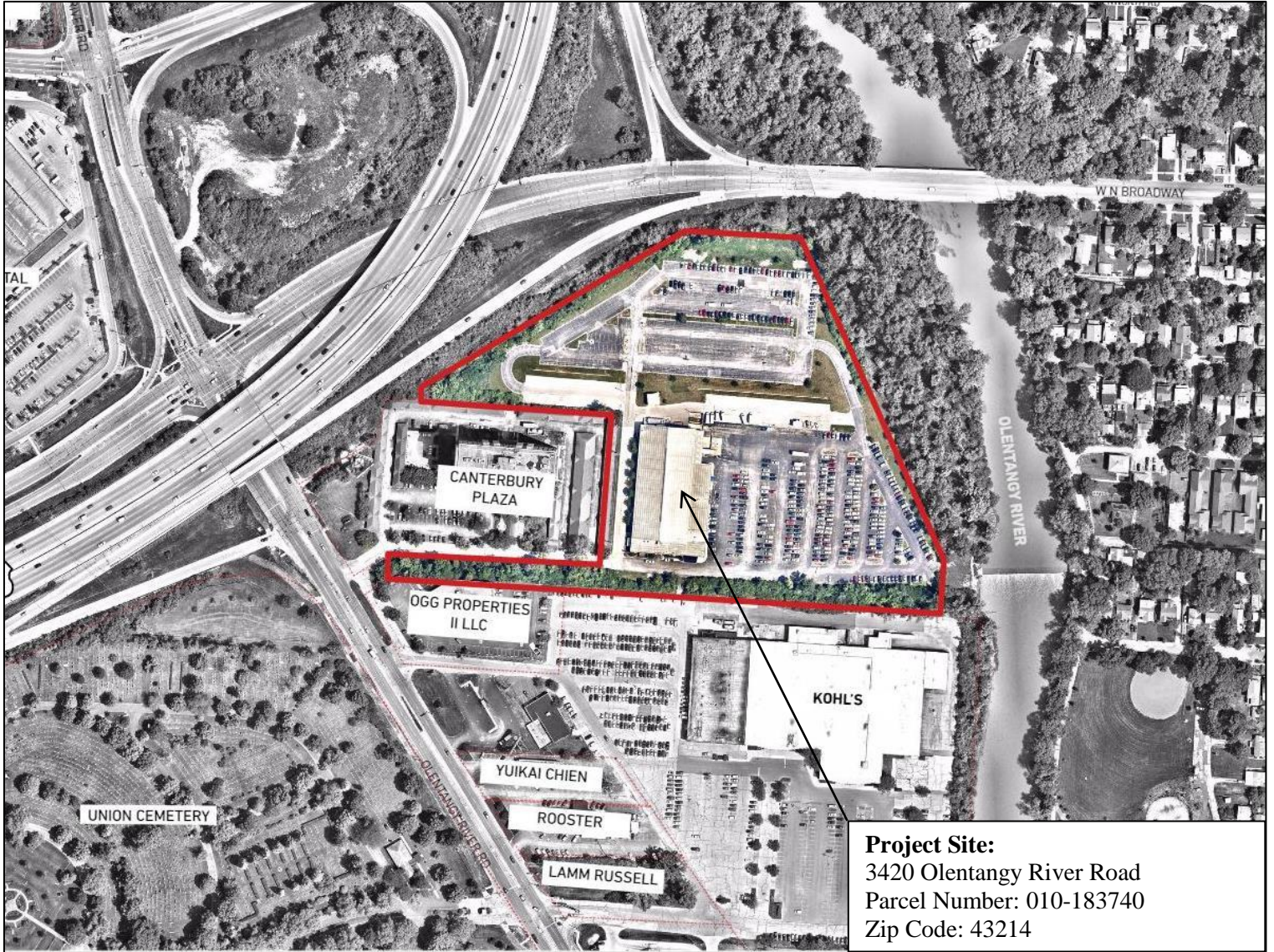


# OhioHealth Corporation Project Site



September, 2016



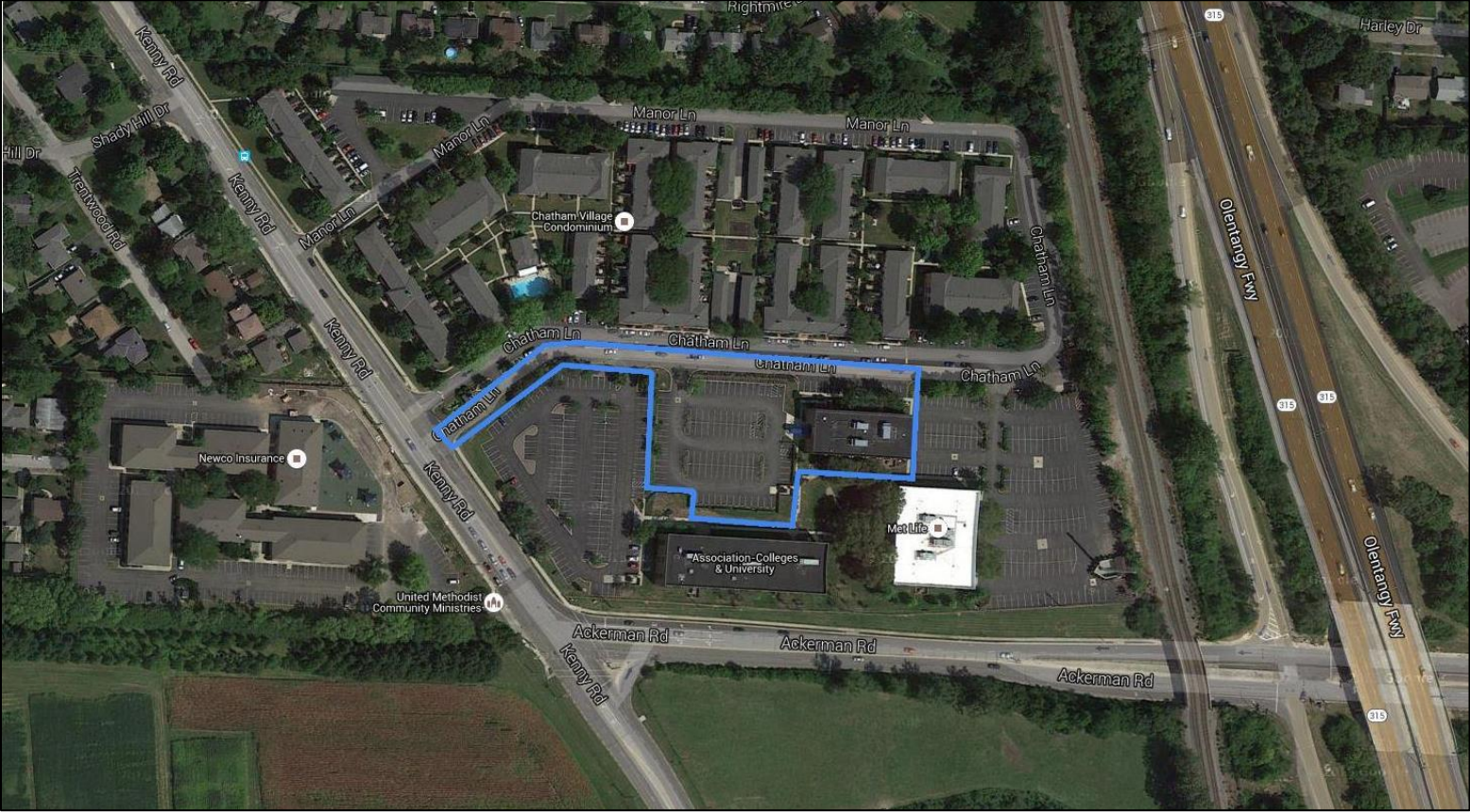
# OhioHealth Corporation Olentangy River Road Corridor



September, 2016



# OhioHealth Corporation Olentangy River Road Corridor (cont.) Chatham Lane Property



September, 2016

## OhioHealth Parcels Included in the Olentangy River Road Corridor

The proposed new (±) 240,000-square-foot facility is targeted for construction within parcel number 010-183740.

The following are all the tax parcels owned by OhioHealth and related entities that are included in the Olentangy River Road Corridor:

PARCEL NUMBER	OWNER*
010-103190-00	Riverside Methodist Hospital
010-103227-00	Riverside United Methodist Hospital
010-103659-00	Riverside Methodist Hospital
010-218200-00	Riverside United Methodist Hospital
010-007910-00	Hospital Properties, Inc.
010-103243-00	OhioHealth Corporation
010-103318-00	Hospital Properties, Inc.
010-103581-00	Riverside Methodist Hospital
010-103609-00	Riverside Methodist Hospital
010-103648-00	Riverside Methodist Hospital
010-183740-00	OhioHealth Corporation
010-199999-00	OhioHealth Corporation
010-200000-00	OhioHealth Corporation
010-236422-00	Hospital Properties, Inc.
010-003323-00	Hospital Properties, Inc.

\*Note: OhioHealth Corporation was formerly known as Riverside Methodist hospital, Riverside United Methodist Hospital, Grant/Riverside Methodist Hospitals Corporation, and U.S. Health Corporation.