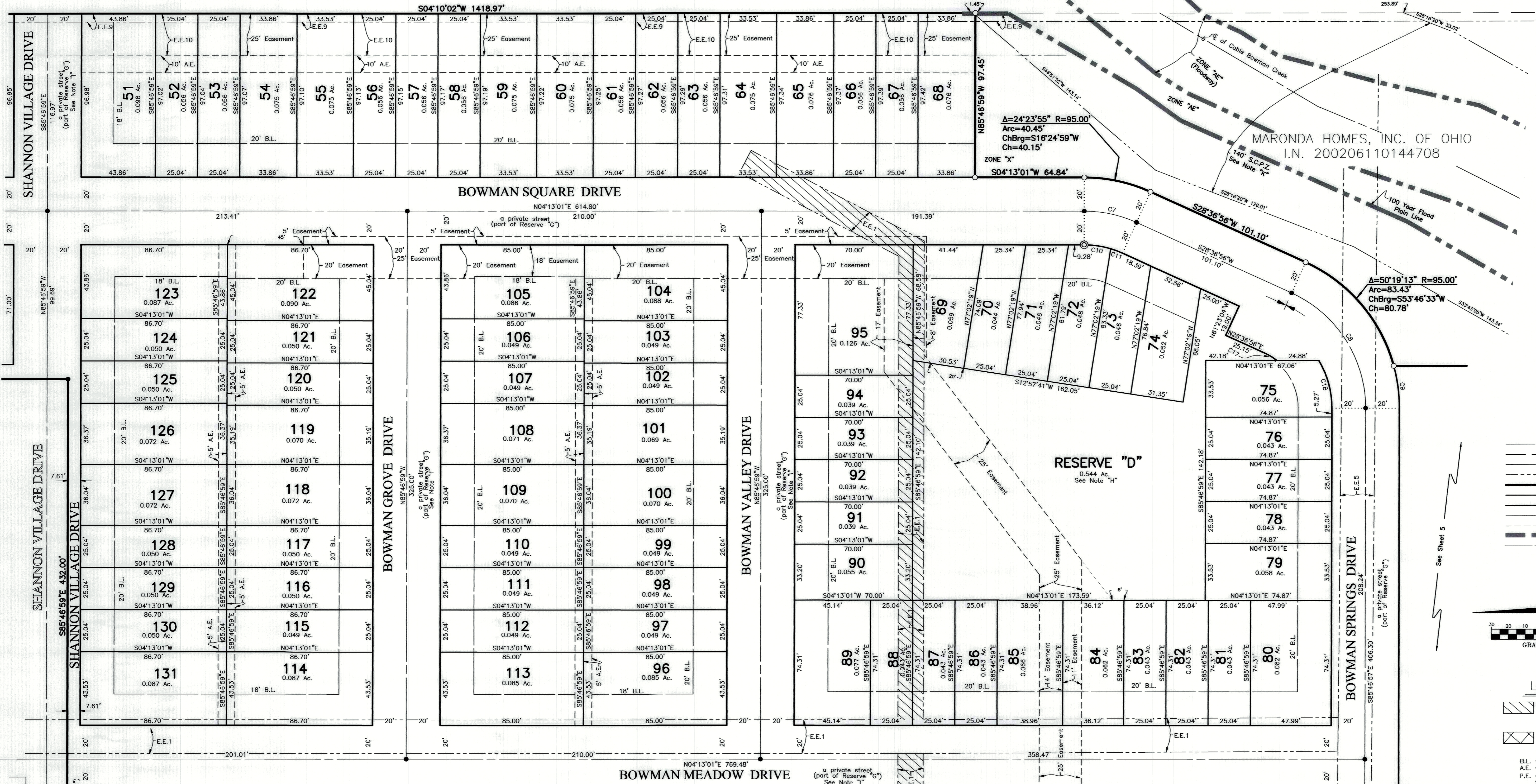
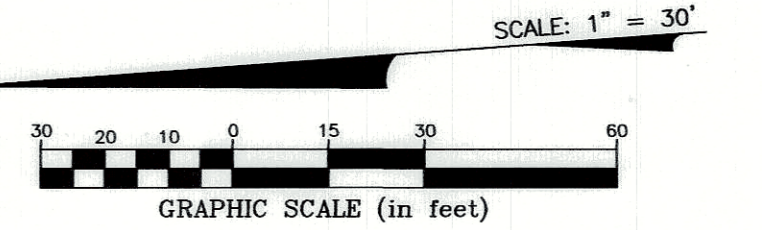
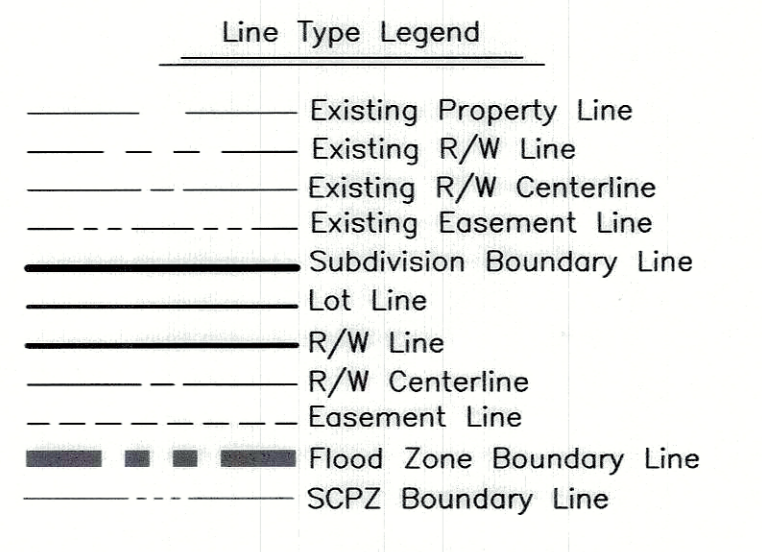


THE MEADOWS AT SHANNON LAKES TOWNHOMES

LAMP LLC
I.N. 199711260153433



MARONDA HOMES, INC. OF OHIO
I.N. 200206110144708



- Legend**
- = Existing Sanitary Sewer Easement I.N. 200304210114671 To be Vacated See Note "M"
 - = Right-of-way to be Rededicated See Note "O"
 - B.L. = Building Line
 - A.E. = Access Easement
 - P.E. = Path Easement See Note "N"
 - S.C.P.Z. = Stream Corridor Protection Zone See Note "K"
 - E.E.1 = Existing Sanitary Sewer Easement I.N. 200304210114671
 - E.E.2 = Existing 20' Easement P.B. 109, P. 22
 - E.E.3 = Existing Drainage Easement P.B. 127, P. 19
 - E.E.4 = Existing 50'x50' Electric Easement O.R. 134J05
 - E.E.5 = Existing 20' Sanitary Sewer Easement I.N. 199806190152977
 - E.E.6 = Existing Easement P.B. 103, P. 22
 - E.E.7 = Existing Easement P.B. 102, P. 98
 - E.E.8 = Existing 15' Drainage Easement P.B. 102, P. 98
 - E.E.9 = Existing 5' Electric Easement D.B. 1652, P. 77
 - E.E.10 = Existing 25' Electric Easement I.N. 200306090111325

LINE TABLE

LINE	BEARING	DISTANCE
L1	N89°42'21"W	11.03'
L2	S49°13'01"W	4.91'
L3	N85°46'54"W	66.98'
L4	S04°13'01"W	5.00'

CURVE TABLE

CURVE NO.	DELTA	RADIUS	LENGTH	CHORD BEARING	CHORD DISTANCE
C1	66°25'19"	50.00'	57.96'	N 52°34'20" W	54.77'
C2	48°11'23"	30.00'	25.23'	N 61°41'18" W	24.49'
C3	6°25'02"	70.00'	7.84'	N 01°00'30" E	7.84'
C4	21°35'06"	70.00'	26.37'	N 12°59'34" W	26.22'
C5	16°24'47"	70.00'	20.05'	N 31°59'31" W	19.98'
C6	45°35'05"	70.00'	55.69'	N 62°59'27" W	54.23'
C7	24°23'55"	75.00'	31.94'	N 16°24'59" E	31.70'
C8	65°36'07"	75.00'	85.87'	N 61°25'00" E	81.26'
C9	15°16'54"	95.00'	25.34'	N 86°34'36" E	25.26'
C10	16°35'31"	55.00'	15.93'	N 12°30'46" E	15.87'

CURVE TABLE

CURVE NO.	DELTA	RADIUS	LENGTH	CHORD BEARING	CHORD DISTANCE
C11	7°48'24"	55.00'	7.49'	N 24°42'44" E	7.49'
C12	89°23'39"	15.00'	23.40'	S 49°31'14" W	21.10'
C13	84°17'03"	15.00'	22.07'	S 43°38'25" E	20.13'
C14	6°19'18"	275.00'	30.34'	N 01°39'45" E	30.33'
C15	7°44'29"	275.00'	37.16'	N 05°22'08" W	37.13'
C16	07°07'57"	275.00'	0.64'	N 09°10'25" W	0.64'
C17	13°53'38"	36.00'	8.73'	N 35°33'45" E	8.71'
C18	30°54'46"	55.00'	29.67'	N 78°45'40" E	29.32'
C19	1°21'19"	225.00'	5.32'	S 08°33'44" E	5.32'
C20	90°00'00"	15.00'	23.56'	S 49°13'01" W	21.21'

CURVE TABLE

CURVE NO.	DELTA	RADIUS	LENGTH	CHORD BEARING	CHORD DISTANCE
C21	39°25'23"	28.41'	19.55'	S 70°17'50" W	19.16'
C22	9°46'25"	32.00'	5.46'	S 54°06'13" W	5.45'
C23	35°13'36"	32.00'	19.67'	S 76°36'13" W	19.37'
C24	0°57'10"	194.00'	3.23'	S 03°44'26" W	3.23'
C25	7°13'41"	194.00'	24.47'	S 00°20'59" E	24.46'
C26	5°16'33"	194.00'	17.86'	S 06°36'06" E	17.86'
C27	1°18'48"	306.00'	7.01'	N 08°34'59" W	7.01'
C28	6°43'40"	306.00'	35.93'	N 04°33'45" W	35.91'
C29	90°00'00"	15.00'	23.56'	S 40°46'59" E	21.21'

2/1/2022 04:20:00 D:\WORK\2022\2022-02-01-05-PLAT.DWG plotted by MAREK on 2/18/2025 11:02:15 AM

HAMPTONS AT SHANNON C.P.B. 150, P. 5
LAKES CONDOMINIUM I.N. 200506090111931