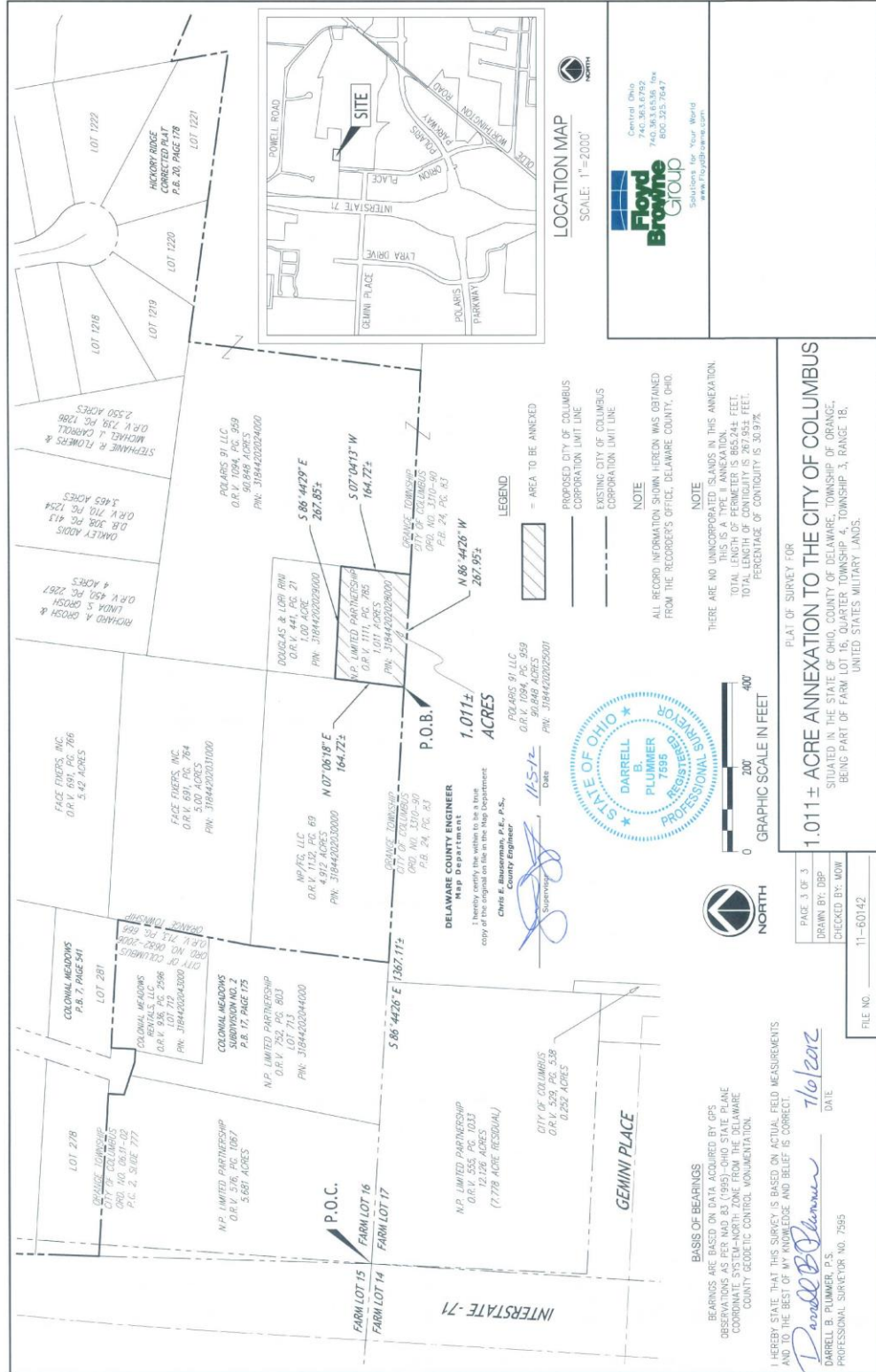


# ANNEXATION AN12-017

## ± 1.011 Acres in Orange Township

### N.P. Limited Partnership



**BASIS OF BEARINGS**  
 BEARINGS ARE BASED ON DATA OBTAINED BY GPS OBSERVATIONS AS PER IAD 8.1 (1995) OHIO STATE PLANE COORDINATE SYSTEM-NORTH ZONE FROM THE DELAWARE COUNTY GEODETIC CONTROL MONUMENTATION.

I HEREBY STATE THAT THIS SURVEY IS BASED ON ACTUAL FIELD MEASUREMENTS AND TO THE BEST OF MY KNOWLEDGE AND BELIEF IS CORRECT.  
*Darrell B. Plummer*  
 DARRELL B. PLUMMER, P.S.  
 PROFESSIONAL SURVEYOR NO. 7595  
 DATE: 7/10/2012

PAGE 3 OF 3  
 DRAWN BY: DBP  
 CHECKED BY: MOW  
 FILE NO: 11-60142

PLAT OF SURVEY FOR  
**1.011 ± ACRE ANNEXATION TO THE CITY OF COLUMBUS**  
 SITUATED IN THE STATE OF OHIO, COUNTY OF DELAWARE, TOWNSHIP OF ORANGE, BEING PART OF FARM LOT 16, QUARTER TOWNSHIP 4, TOWNSHIP 3, RANGE 18, UNITED STATES MILITARY LANDS.



**DELAWARE COUNTY ENGINEER**  
 Map Department  
 I hereby certify the within to be a true and correct copy of the original on file in the Map Department  
 Ohio County Engineer, P.S.  
*[Signature]*  
 Surveyor

**LEGEND**  
 = AREA TO BE ANNEXED  
 ——— PROPOSED CITY OF COLUMBUS CORPORATION LIMIT LINE  
 - - - - - EXISTING CITY OF COLUMBUS CORPORATION LIMIT LINE

**NOTE**  
 ALL RECORD INFORMATION SHOWN HEREON WAS OBTAINED FROM THE RECORDER'S OFFICE, DELAWARE COUNTY, OHIO.

**NOTE**  
 THERE ARE NO UNANNEXATED LANDS IN THIS ANNEXATION. THIS IS A TYPE I ANNEXATION.  
 TOTAL LENGTH OF PERIMETER IS 865,244 FEET.  
 TOTAL LENGTH OF CONTIGUITY IS 267,931 FEET.  
 PERCENTAGE OF CONTIGUITY IS 30.97%.



**LOCATION MAP**  
 SCALE: 1"=2000'



A:\PROJECTS\NP LIMITED\11-60142 (AMPHITEATER)\SRPPY\DWG-300S (SRVY-ANX 11-60142 (L\_01) 4C).DWG - 10/25/2012 4:50:15 PM