

Legend

- PL Property Line
- R/W Right-of-Way
- Iron Pin Set/Mag Nail Set
- Iron Pin Found (IPF)



BASIS OF BEARING:

The north line of Locust Street is assumed to be N 81°52'08" E.

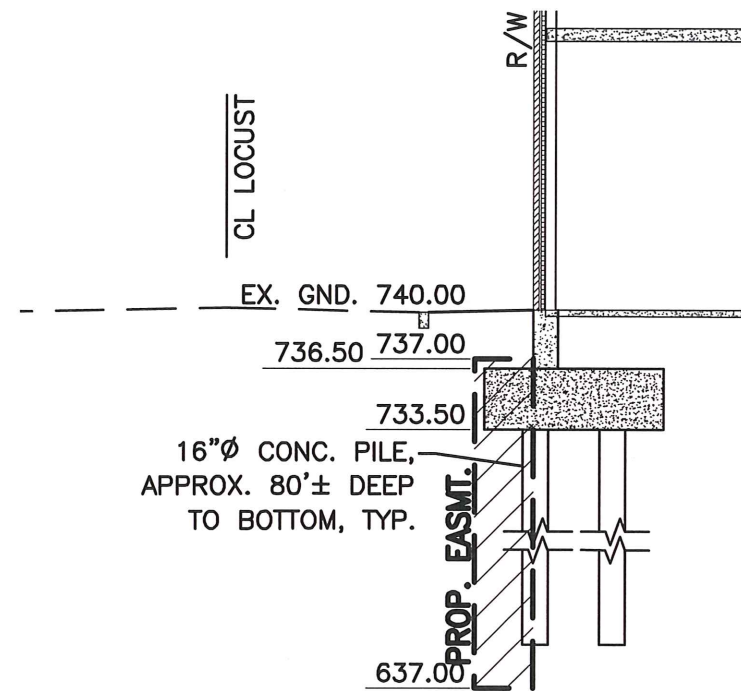
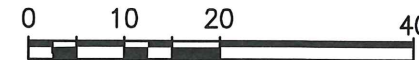
The horizontal bearings shown on this plat are based on the Ohio State Plane Coordinate System, South Zone, NAD83(2011). Vertical elevations shown on this plat are based on NAVD88 (Geoid 12A). Bearings and elevations originated from a field traverse which was referenced to said coordinate system by GPS observations and observations of selected stations in the Ohio Department of Transportation's Virtual Reference Station network.

All monuments found are in good condition unless otherwise noted.

* Situate in the State of Ohio, County of Franklin, City of Columbus, being a part of Locust Street, 33 feet wide, as delineated on the Town Plat of Columbus as recorded in Deed Book "F", Page 332, destroyed by fire and Re-recorded in Plat Book 3, Page 247 and Plat Book 14, Page 27, all records being of the Recorder's Office, Franklin County, Ohio

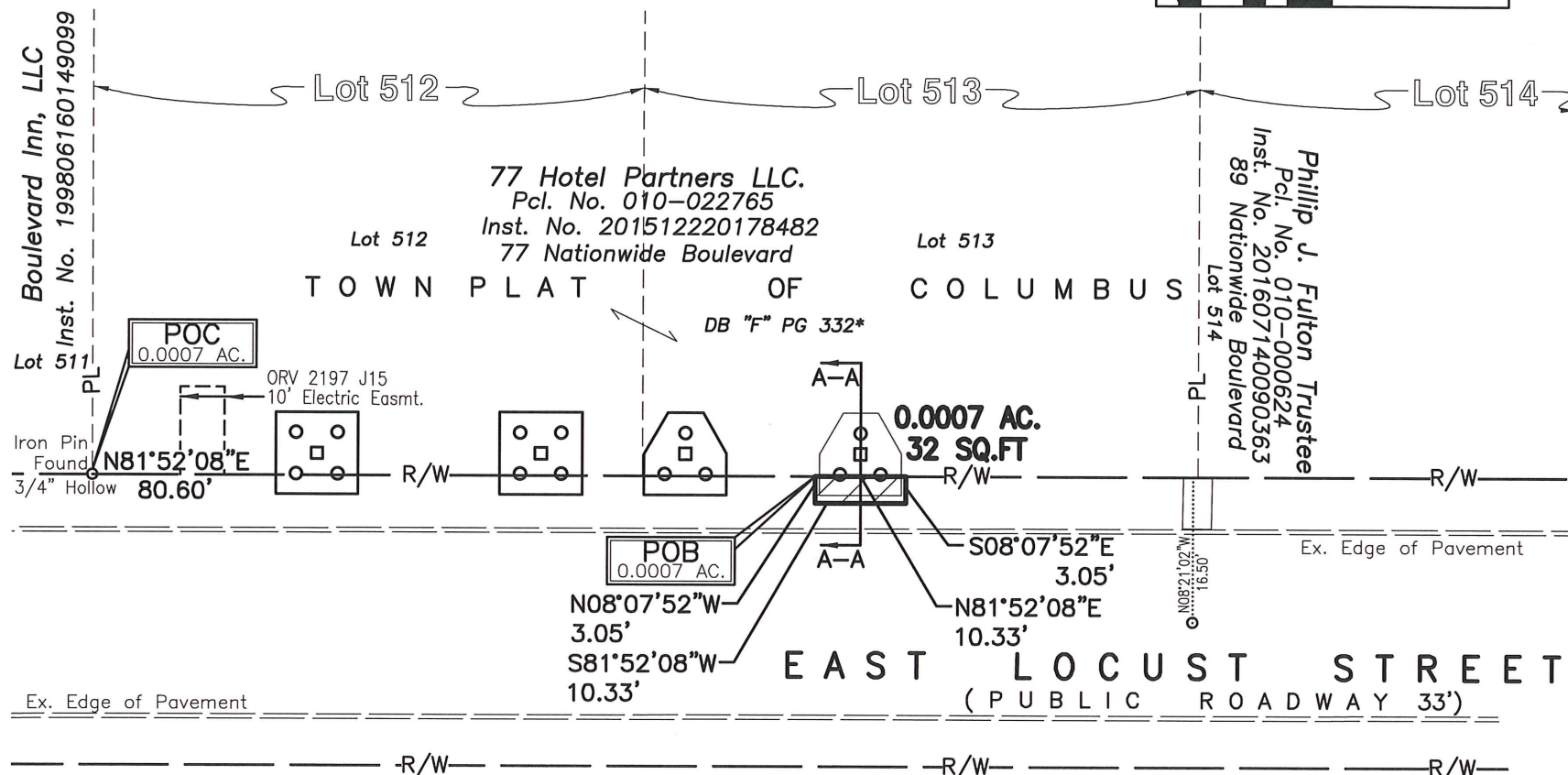
Field survey was conducted on January 2007, August 2014, & July 2016.

Scale: 1" = 20'



SECTION A-A
Scale: 1" = 10'

All elevations are based on NAVD88 Datum.



E. P. FERRIS
AND ASSOCIATES
INC.
Consulting Civil Engineers and Surveyors

CONTACT:
880 KING AVENUE
COLUMBUS, OHIO 43212
(614) 299-2999
(614) 299-2992 (Fax)
www.EPFERRIS.com

**Exhibit "B" - CONCRETE CAP/PILE LINE 5.8
VERTICAL ENCROACHMENT EASEMENT #4
77 Nationwide Blvd
CITY OF COLUMBUS, OHIO**

BY: *Matthew Lee Sloat* 5/11/17
Date
Matthew Lee Sloat, PS
Registered Surveyor No. 8342

JOB NO.	708-681
DRAWN BY:	RJB
CHECKED BY:	MLS
APPROVED BY:	MLS
DATE:	05/11/17