

**VAULT EASEMENT
0.077 ACRE**

Situate in the State of Ohio, County of Franklin, City of Columbus, lying in Quarter Township 3, Township 1, Range 18, United States Military District, being on, over and across that 6.06 acre tract conveyed to City of Columbus by deed of record in Deed Book 1571, Page 251, (all references refer to the records of the Recorder's Office, Franklin County, Ohio) being more particularly described as follows:

BEGINNING at an angle point in the southerly right-of-way line of King Avenue, at the northwesterly corner of that 0.123 acre tract conveyed to Franklin County Commissioners by deed of record in Instrument Number 199903110060973;

Thence South 05° 50' 59" West, with the easterly line of said 6.06 acre tract, the westerly line of said 0.123 acre tract and the remainder of that 25.4 acre tract conveyed to Battelle Memorial Institute by deed of record in Deed Book 1566, Page 497, a distance of 26.56 feet to a point;

Thence across said 6.06 acre tract, the following courses and distances:

South 59° 32' 40" West, a distance of 81.97 feet to a point;

North 30° 27' 20" West, a distance of 24.46 feet to a point;

North 04° 05' 40" West, a distance of 26.27 feet to a point;

North 59° 32' 40" East, a distance of 13.17 feet to a point;

South 89° 45' 07" East, partially with the existing extents of an existing bridge, a distance of 43.87 feet to a point; and

North 02° 24' 06" East, continuing with the existing extents of an existing bridge, a distance of 15.90 feet to a point in the southerly right-of-way line of said King Avenue, the northerly line of said 6.06 acre tract;

Thence South 86° 57' 16" East, with said southerly right-of-way line, the northerly line of said 6.06 acre tract, a distance of 31.80 feet to the POINT OF BEGINNING, containing 0.077 acre, more or less, being part of Auditor Parcel Number 010-067298.

The coordinates shown hereon are based on the Ohio State Plane Coordinate System, South Zone, NAD 83 (1986). Said coordinates originated from a field traverse which was tied (referenced) to said coordinate system by Static GPS observations of Franklin County Engineering Department monuments COC4-83 and RINGLE, with a bearing of North 34°13'31" East between said monuments.

**VAULT EASEMENT
0.077 ACRE**

-2-



EVANS, MECHWART, HAMBLETON & TILTON, INC.

Heather L. King 1/21/22

Heather L. King
Professional Surveyor No. 8307

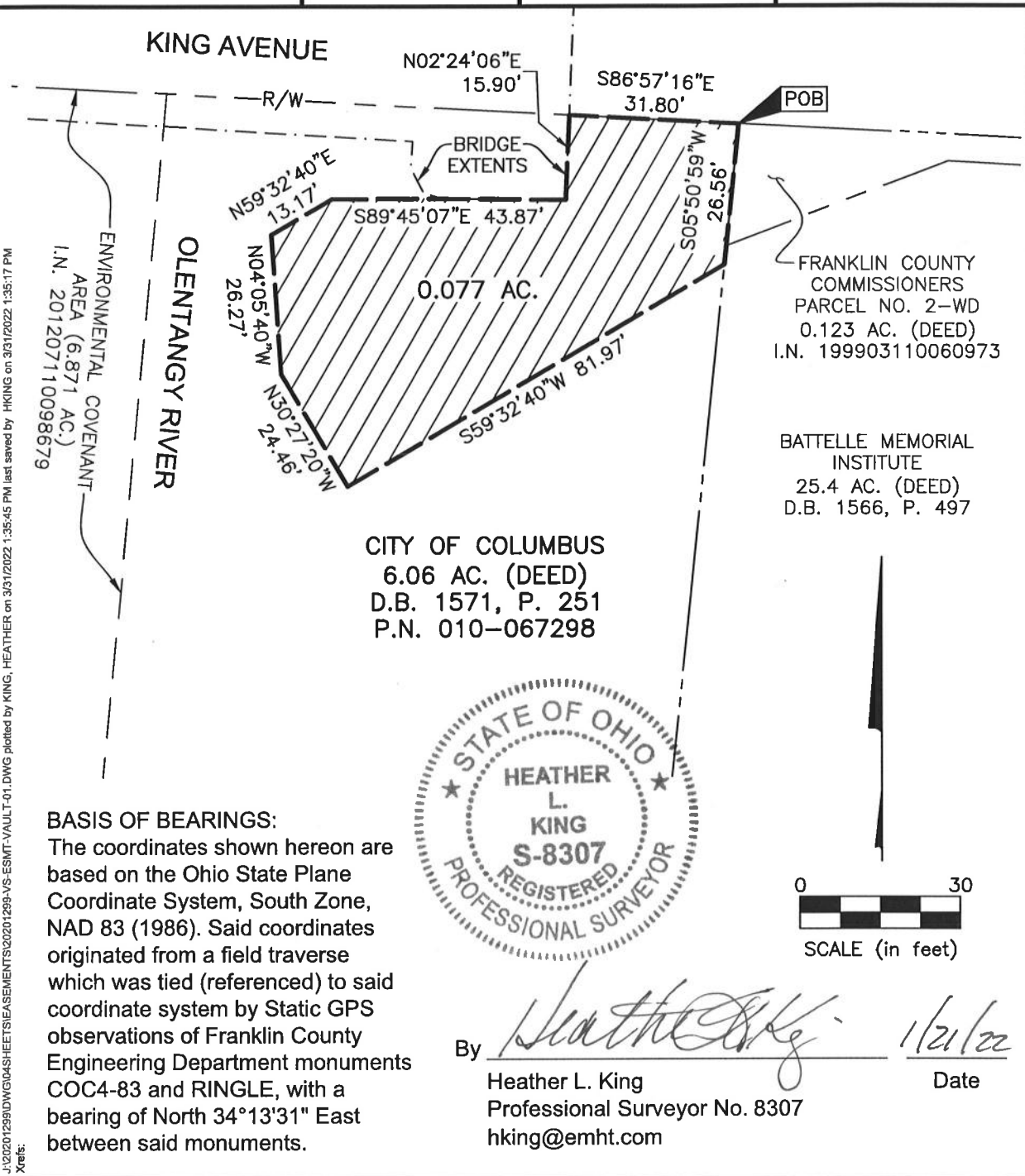


Evans, Mechwart, Hambleton & Tilton, Inc.
 Engineers • Surveyors • Planners • Scientists
 5500 New Albany Road, Columbus, OH 43054
 Phone: 614.775.4300 Toll Free: 888.775.3648
 emht.com

VAULT EASEMENT

QUARTER TOWNSHIP 3, TOWNSHIP 1, RANGE 18
 UNITED STATES MILITARY DISTRICT
 CITY OF COLUMBUS, COUNTY OF FRANKLIN, STATE OF OHIO

Date: January 21, 2022 Scale: 1" = 30' Job No: 2020-1299 Sheet No: 1 of 1



BASIS OF BEARINGS:
 The coordinates shown hereon are based on the Ohio State Plane Coordinate System, South Zone, NAD 83 (1986). Said coordinates originated from a field traverse which was tied (referenced) to said coordinate system by Static GPS observations of Franklin County Engineering Department monuments COC4-83 and RINGLE, with a bearing of North 34°13'31" East between said monuments.



By Heather L. King 1/21/22
 Heather L. King Date
 Professional Surveyor No. 8307
 hking@emht.com

J:\2020\1299\DWG\04\SHEETS\EASEMENTS\2020\1299-VS-ESMT-VAULT-01.DWG plotted by KING, HEATHER on 3/31/2022 1:35:45 PM last saved by HKING on 3/31/2022 1:35:17 PM Xrefs: