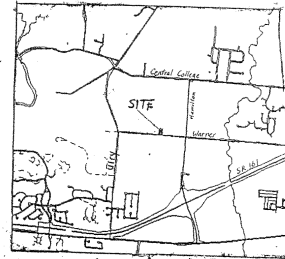


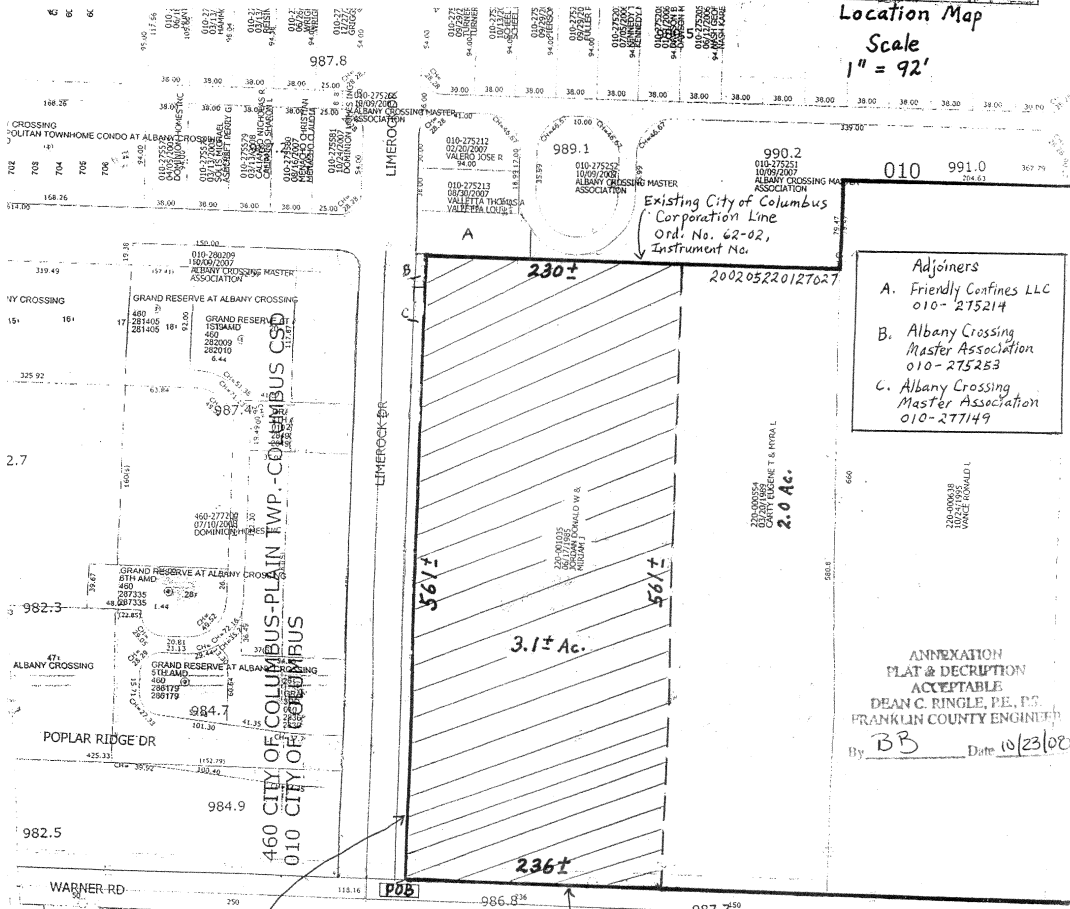
MAP
ANNEXATION AN08-018
3.1 acres in Plain Township
Donald and Miriam Jordan

PLAT OF ANNEXATION
SECTION 3, TOWNSHIP 2, RANGE 16
UNITED STATES MILITARY LANDS
PLAIN TOWNSHIP, FRANKLIN COUNTY, OHIO

Proposed Annexation of 3.1 Acres
From Plain Township To
City of Columbus



Location Map
Scale
1" = 92'



- Adjoiners**
- A. Friendly Confines LLC
010- 275214
 - B. Albany Crossing Master Association
010- 275253
 - C. Albany Crossing Master Association
010-277149

ANNEXATION
 PLAT & DESCRIPTION
 ACCEPTABLE
 DEAN C. RINGLE, P.E., P.S.
 FRANKLIN COUNTY ENGINEER
 By **BB** Date 10/23/08

Existing City of Columbus Corporation Line
 Ord. No. 62-02, Instrument No. 200205220127027

Existing City of Columbus Corporation Line
 Ord. No. 432-04, Instrument No. 200407190166446

EXISTING CITY OF COLUMBUS CORP. LINE
 PROPOSED CITY OF COLUMBUS CORP. LINE
 AREA TO BE ANNEXED

Martha O'Neal
 220-000657
 2.869 AC.

Paul D. & Della A.
 Cochran
 2.869 AC.

RECEIVED

Oct 21 2008
 Franklin County Engineer
 Dean C. Ringle, P.E., P.S.

Drawing Prepared By:

Ronald W. Jordan
Donald W. Jordan
Miriam D. Jordan

Date: October 1, 2008

5050 Warner Road
 Lancasterville, Ohio 43081