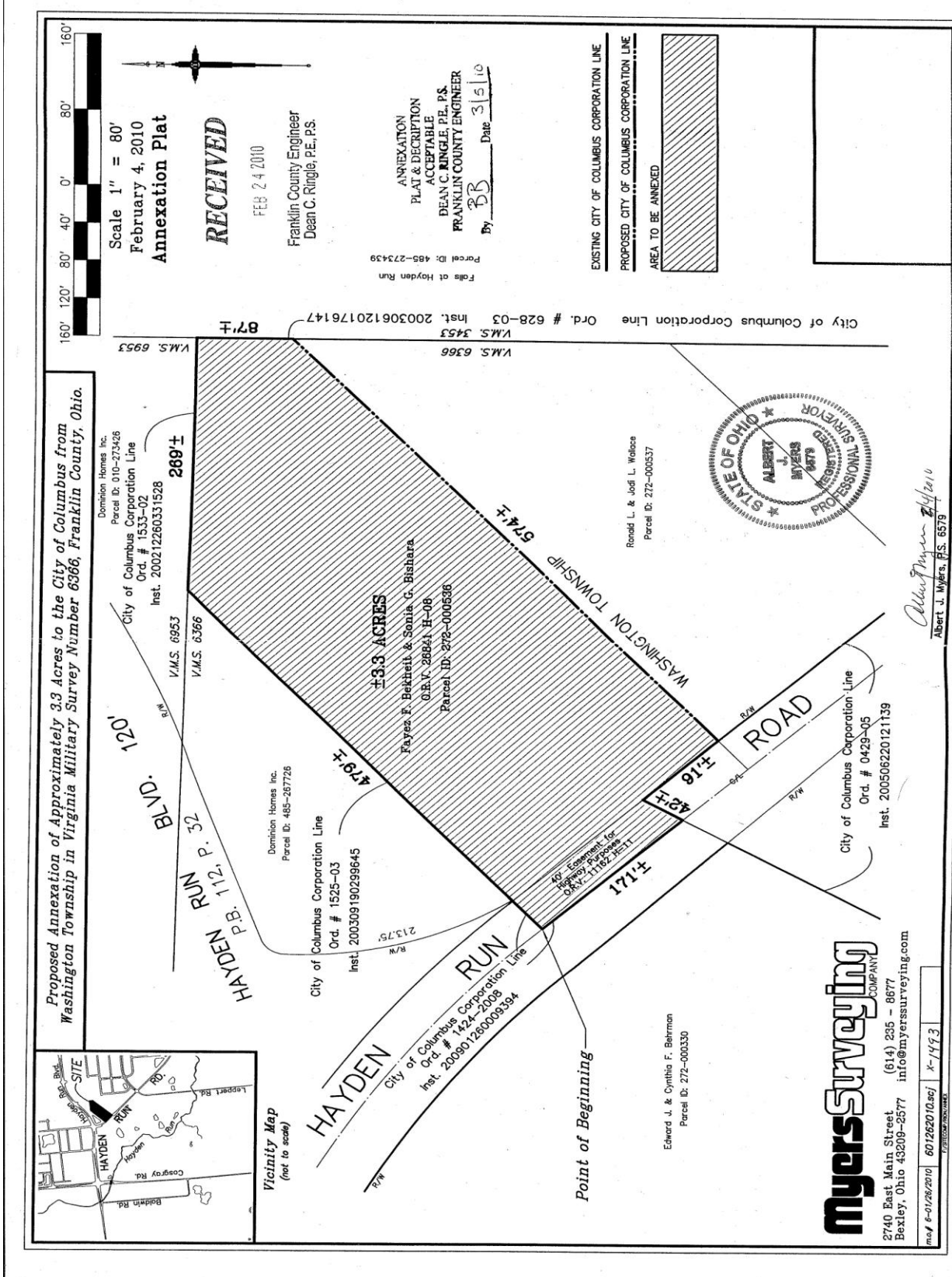


ANNEXATION AN10-002

+ 3.3 Acres in Washington Township Fayez F. Bekheit & Sonia G. Bishara



Proposed Annexation of Approximately 3.3 Acres to the City of Columbus from
 Washington Township in Virginia Military Survey Number 6366, Franklin County, Ohio.

Scale 1" = 80'
 February 4, 2010
 Annexation Plat

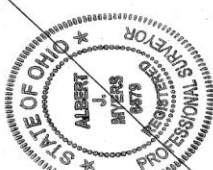
RECEIVED

FEB 24 2010
 Franklin County Engineer
 Dean C. Ringle, P.E., P.S.

±3.3 ACRES
 Fayez F. Bekheit & Sonia G. Bishara
 O.R.V. 28824, H-06
 Parcel ID: 272-000538

ANNEXATION
 PLAT & DESCRIPTION
 ACCEPTABLE
 DEAN C. RINGLE, P.E., P.S.
 FRANKLIN COUNTY ENGINEER
 By DB Date 3/5/10
 Parcel ID: 485-273439
 Falls of Hayden Run

EXISTING CITY OF COLUMBUS CORPORATION LINE
 PROPOSED CITY OF COLUMBUS CORPORATION LINE
 AREA TO BE ANNEXED



myersurveying

COMPANY
 2740 East Main Street
 Bexley, Ohio 43209-2577 info@myerssurveying.com
 (614) 235-8677

Ord. # 1525-03
 Inst. 200309190299645
 City of Columbus Corporation Line

Ord. # 1424-2008
 Inst. 2008901280009394
 City of Columbus Corporation Line

Ord. # 0429-05
 Inst. 200506220121139
 City of Columbus Corporation Line

Ord. # 628-03
 Inst. 200306120176147
 City of Columbus Corporation Line

Albert J. Myers, P.S. 6579
 2/4/2010

601262010.sci *1493
 6/1/2009 10:58:43 AM

Edvard J. & Cynthia F. Behrman
 Parcel ID: 272-000330

Ronald L. & Jodi L. Wallace
 Parcel ID: 272-000537

City of Columbus Corporation Line
 Ord. # 1525-03
 Inst. 200309190299645

City of Columbus Corporation Line
 Ord. # 1424-2008
 Inst. 2008901280009394

City of Columbus Corporation Line
 Ord. # 0429-05
 Inst. 200506220121139

City of Columbus Corporation Line
 Ord. # 628-03
 Inst. 200306120176147