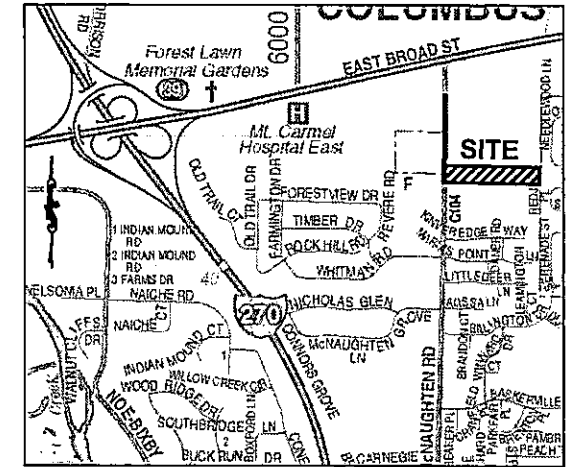


7.3± ACRE ANNEXATION FROM THE TOWNSHIP OF TRURO TO THE CITY OF COLUMBUS

Township of Truro, Franklin County, Ohio
Half Section 2, Township 2, Range 21,
Refugee Lands

ANNEXATION
PLAT & DESCRIPTION
ACCEPTABLE
CORNELL R. ROBERTSON, P.E., P.S.
FRANKLIN COUNTY ENGINEER

By RJN Date 07/14/2017



1 City of Reynoldsburg Corp. Line
Case No. 73-72
Ord. No. 47-73
M.R. 159, Pg. 393

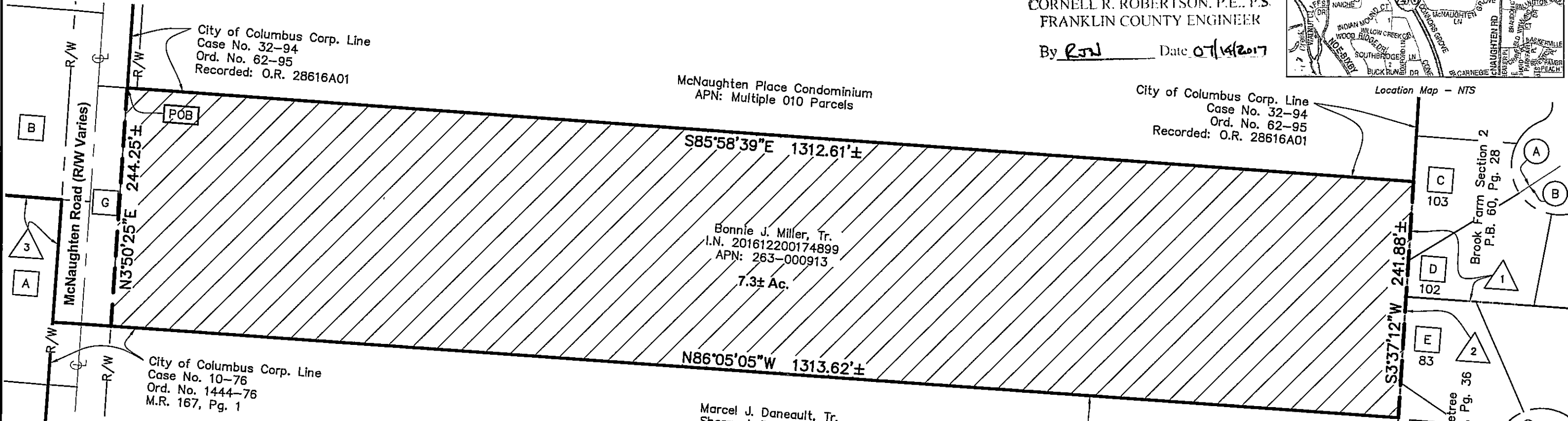
3 City of Columbus Corp. Line
Case No. 263
M.R. 167, Pg. 146-410

2 City of Reynoldsburg Corp. Line
Case No. 76-72
Ord. No. 56-73
M.R. 159, Pg. 393

City of Columbus Corp. Line
Case No. 32-94
Ord. No. 62-95
Recorded: O.R. 28616A01

McNaughten Place Condominium
APN: Multiple 010 Parcels

City of Columbus Corp. Line
Case No. 32-94
Ord. No. 62-95
Recorded: O.R. 28616A01



A City of Columbus
APN: 550-103921

B Woodford L. Holzbacher
APN: 263-000270

C Stephen G. McLoughlin
APN: 060-006589

D Gopal, Ganga D. & Lachhi Baskota
APN: 060-006588

E Mary Ann Bostic
APN: 060-004260

F Marc J. Unger
APN: 060-004259

G Franklin County Commissioner's
I.N. 201707130095777
0.168 Ac.

A Needlewood Lane (50')
P.B. 60, Pg. 29

B Timbermill Way (50')
P.B. 60, Pg. 29

C Firethorn Avenue (50')
P.B. 51, Pg. 37

D Redjade Place (50')
P.B. 51, Pg. 37

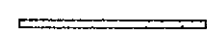
Length of Contiguity: ±2626 feet
Total Length of Perimeter: ±3112 feet
Percentage of Contiguity : ±84%

No islands of township property are created by this annexation.

Legend



Area to be Annexed



Existing City of Reynoldsburg Corp Line

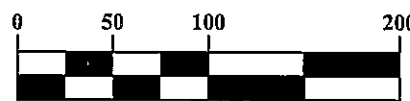


Existing City of Columbus Corp Line

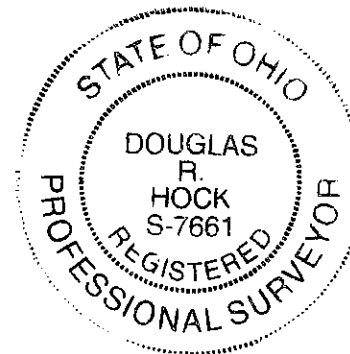


Proposed City of Columbus Corp Line

GRAPHIC SCALE



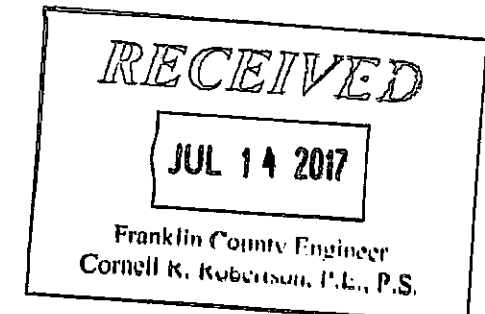
1 inch = 100 feet



Douglas R. Hock
Douglas R. Hock, P.S. 7661
Date: 7/13/17

Advanced Civil Design, Inc
422 Beecher Road
Gahanna, OH 43230
Phone 614-428-7750

Job No.: 17-0001-847
Date: 05/09/2017



Z:\17-0001-847\DWG\PRODUCTION DRAWINGS\SURVEY\17-0001-847 annex rev2.dwg Layout1 Jul 13, 2017 - 2:57:47pm dbicbham