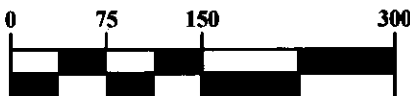


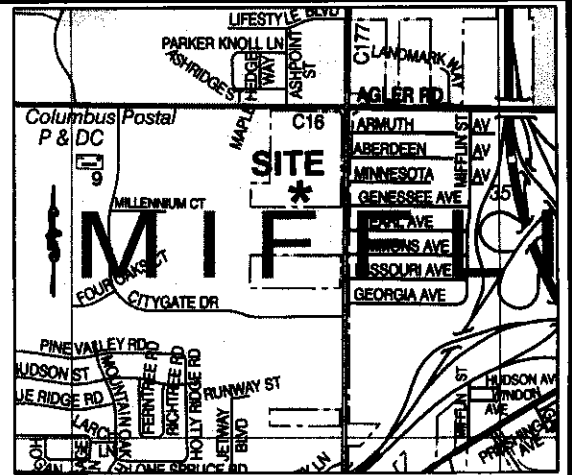
**7.7± ACRE ANNEXATION FROM THE  
TOWNSHIP OF MIFFLIN  
TO THE CITY OF COLUMBUS**

Quarter Township 3, Township 1, Range 17  
Mifflin Township, Franklin County, Ohio

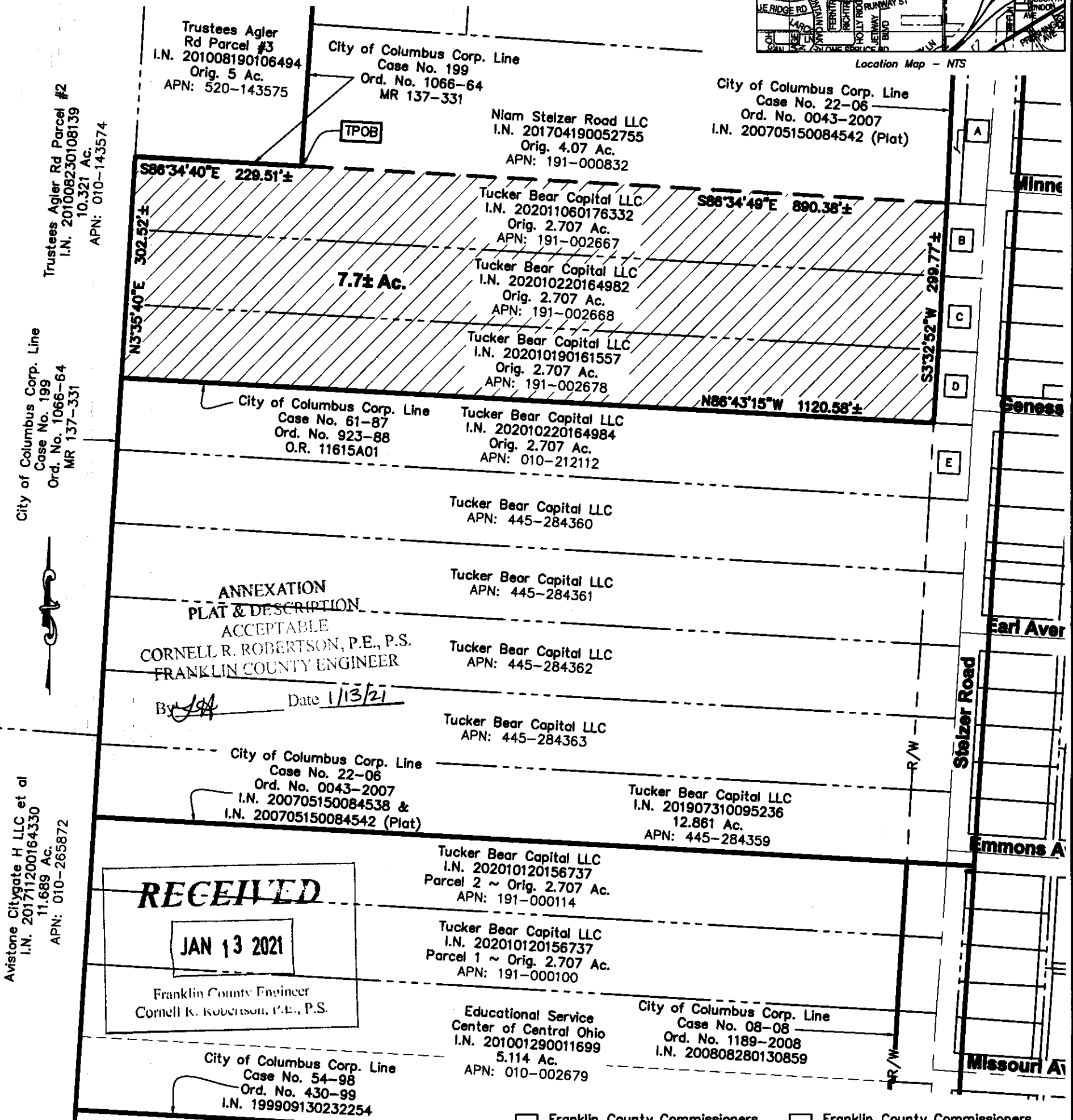
**GRAPHIC SCALE**



1 inch = 150 feet



Location Map - NTS



**ANNEXATION  
PLAT & DESCRIPTION  
ACCEPTABLE**  
CORNELL R. ROBERTSON, P.E., P.S.  
FRANKLIN COUNTY ENGINEER

By [Signature] Date 1/13/21

**RECEIVED**

JAN 13 2021

Franklin County Engineer  
Cornell R. Robertson, P.E., P.S.

Length of Contiguity: 1952.4± feet  
Total Length of Perimeter: 2842.8± feet  
Percentage of Contiguity: 68.7±%

No islands of township property are created by this annexation.

**Legend**



Area to be Annexed

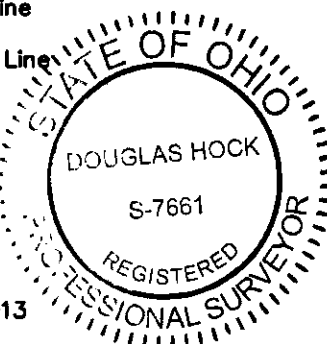
Existing City of City of Columbus Corp. Line

Proposed City of City of Columbus Corp. Line

- A** Franklin County Commissioners  
I.N. 200411180264457  
Parcel 53WD  
0.082 Ac.
- B** Franklin County Commissioners  
I.N. 200408120188054  
Parcel 52WD  
0.133 Ac.
- C** Franklin County Commissioners  
I.N. 200407210169351  
Parcel 51WD  
0.133 Ac.
- D** Franklin County Commissioners  
I.N. 200407230171147  
Parcel 50WD  
0.133 Ac.
- E** Franklin County Commissioners  
I.N. 200407210169321  
Parcel 49WD  
0.133 Ac.

Douglas R. Hock  
Professional Surveyor No. 7661

1/13/21  
Date:



Advanced Civil Design, Inc  
781 Science Boulevard, Suite 100  
Gahanna, OH 43230  
Phone 614-428-7750

Job No.: 20-0002-913  
Date: 12/04/20