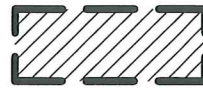


**Legend**



Area to be Annexed



Existing City of Columbus Corp Line



Proposed City of Columbus Corp Line

**0.91± ACRE ANNEXATION FROM THE  
TOWNSHIP OF CLINTON  
TO THE CITY OF COLUMBUS**

Township of Clinton, Franklin County, Ohio  
Quarter Township 3, Township 1, Range 18,  
United States Military Lands

RECEIVED

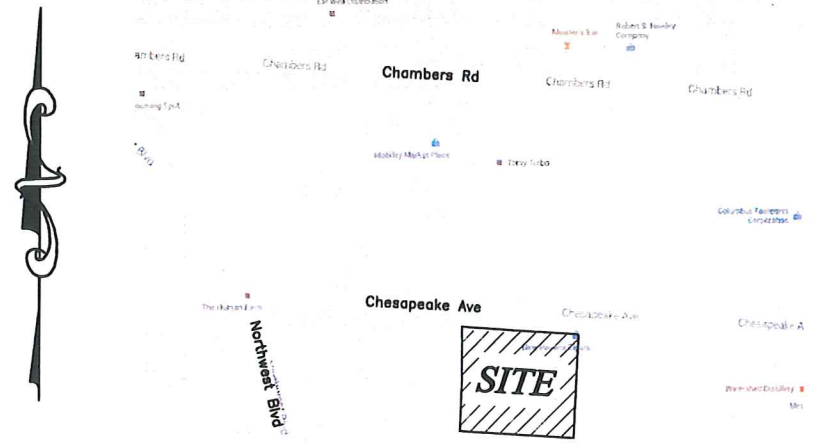
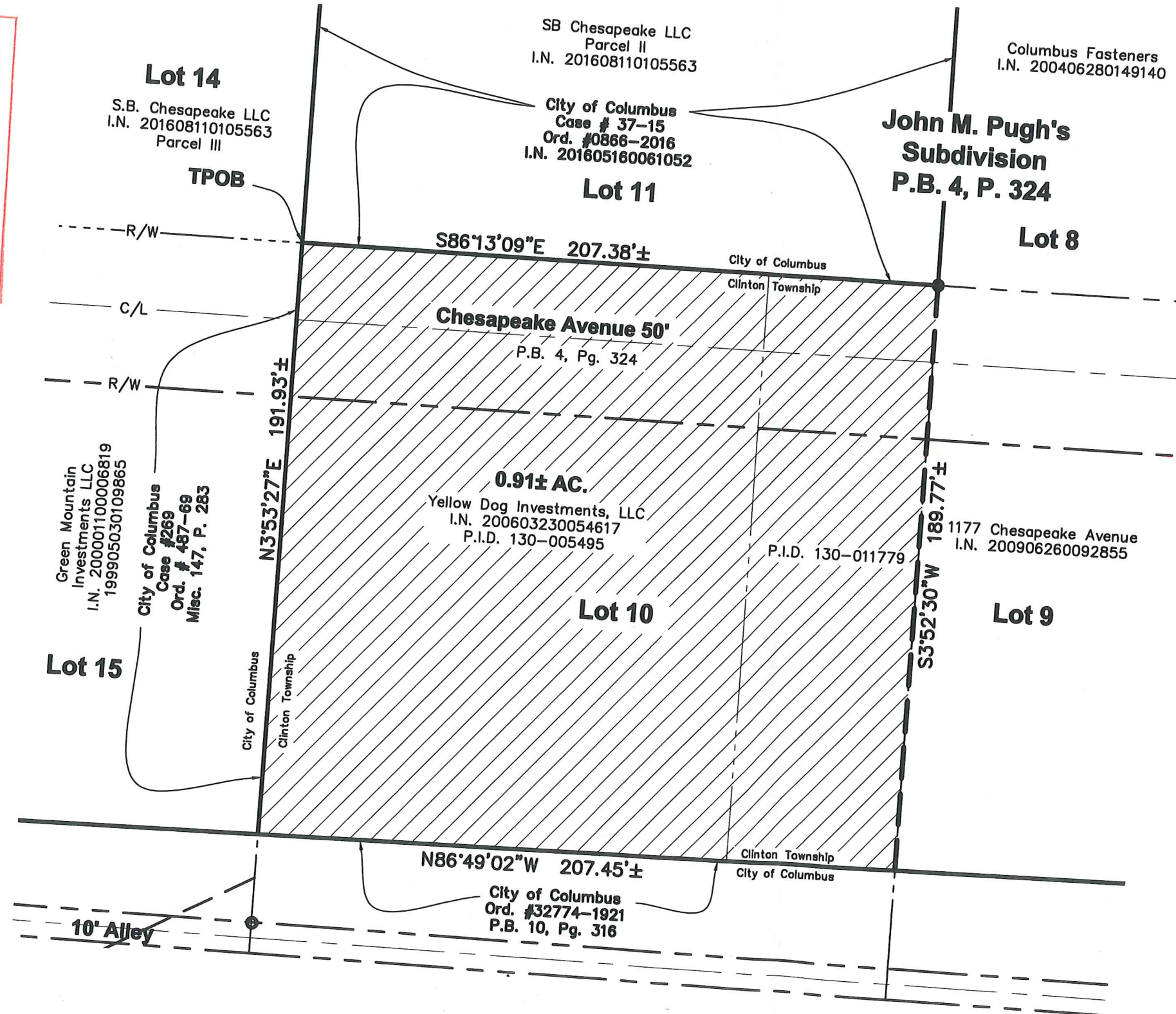
APR 13 2021

Franklin County Engineer  
Cornell R. Robertson, P.E., P.S.

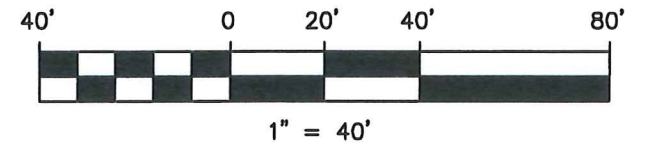
ANNEXATION  
PLAT & DESCRIPTION  
ACCEPTABLE

CORNELL R. ROBERTSON, P.E., P.S.  
FRANKLIN COUNTY ENGINEER

By: FR Date: 13 Apr 21



Location Map - NTS



Length of Contiguity: ±606.8 feet  
Total Length of Perimeter: ±796.5 feet  
Percentage of Contiguity : ±76.2%

No islands of township property are created by this annexation.



*Douglas R. Hock*

Douglas R. Hock, P.S. 7661

4/12/21

Date:

Advanced Civil Design, Inc  
781 Science Blvd., Suite 100  
Gahanna, OH 43230  
Phone 614-428-7750

Job No.: 21-0197-65  
Date: 4/12/2021